

Converting Colors

XYZ(42.5773, 42.6340, 46.5212)

Have a look what the booklet for
XYZ(42.5773, 42.6340, 46.5212)
contains.

XYZ(42.5505, 42.6601, 46.5490)	3
<i>Conversions</i>	4
<i>Details</i>	6
<i>Harmonies</i>	12
<i>Previews</i>	24
<i>Color Blindness Simulation</i>	28
<i>CSS Examples</i>	31

Color

**XYZ(42.5505, 42.6601,
46.5490)**

Conversions

Conversions Part 1

Format	Color
Hex	BAABAF
RGB	186, 171, 175
RGB Percent	73%, 67%, 69%
CMY	0.2706, 0.3294, 0.3137
CMYK	0.00, 0.08, 0.06, 0.27
HSL	344°, 10%, 70%
HSV	344°, 8%, 73%
XYZ	42.5505, 42.6601, 46.5490
YIQ	175.9410, 7.6560, 4.4240

Conversions

Conversions Part 2

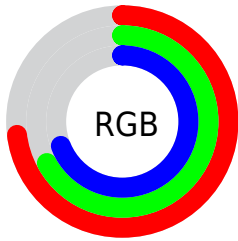
Format	Color
RYB	186, 171, 175
Decimal	12233647
CIELab	71.32, 6.10, -0.11
CIELCh	71, 6.101, 358.992
Yxy	42.6601, 0.3229, 0.3238
Android (android.graphics.Color)	4290423727 (0xFFBAABAF)
YUV	175.9410, -0.4639, 8.8217
Hunter-Lab	65.3147, 1.9865, 3.4650

Details

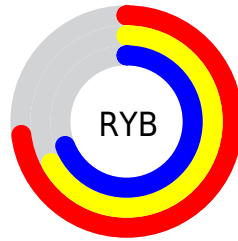
The XYZ color **42.5505, 42.6601, 46.5490** is a light color, and the websafe version is hex **999999**. A complement of this color would be **42.7987, 47.1543, 51.1043**, and the grayscale version is **41.2367, 43.3842, 47.2454**.

A 20% lighter version of the original color is **78.0972, 78.9831, 85.9920**, and **19.8448, 19.6103, 21.4781** is the 20% darker color. If you saturate the color by 10%, you get **38.0086, 35.6131, 38.7548**, and if you desaturate by 10%, it is **47.7246, 50.7538, 55.2230**.

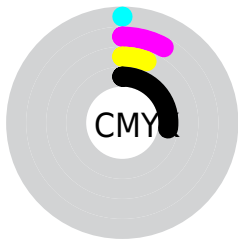
Distribution



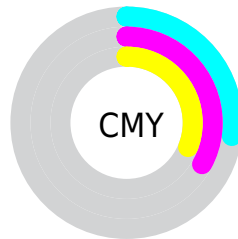
- Red (73%)
- Green (67%)
- Blue (69%)



- Red (73%)
- Yellow (67%)
- Blue (69%)



- Cyan (0%)
- Magenta (8%)
- Yellow (6%)
- Black (27%)



- Cyan (27%)
- Magenta (33%)
- Yellow (31%)

Brightness & Saturation Gradients

These gradients show how the XYZ color 42.5505, 42.6601, 46.5490 changes by changing the brightness by 10 percent. The first figure shows a shift by +10% for each color and the second figure -10%.

Similar to the brightness gradients but the following saturation gradients show a change of the XYZ color 42.5505, 42.6601, 46.5490 by changing the saturation by 10% instead.

■ 42.5505, 42.6601,
46.5490

■ 42.5505, 42.6601,
46.5490

347.7129,
357.2121, 389.3530

■ 29.7256, 29.6185,
32.3275

■ 78.2921, 79.1977,
86.3829

■ 19.7774, 19.5492,
21.3449

101.9394,
103.4625, 112.8325

■ 12.3407, 12.0678,
13.1826

129.9249,
132.2371, 144.1950

■ 7.0500, 6.7899,
7.4222

162.6140,
165.9060, 180.8892

■ 3.5400, 3.3310,
3.6451

200.3720,
204.8536, 223.3336

■ 1.4453, 1.3069,
1.4327

243.5642,

■ 0.2882, 0.1465,

249.4642, 271.9466

0.1671

292.5561,
300.1222, 327.1469

■ 0.0000, 0.0000,
0.0000

■ 42.5505, 42.6601,
46.5490

■ 42.5505, 42.6601,
46.5490

■ 38.0086, 35.6131,
38.7548

■ 47.7246, 50.7538,
55.2230

■ 34.0708, 29.5645,
31.8096

■ 53.5505, 59.9288,
64.8007

■ 30.7121, 24.4706,
25.6852

■ 60.0514, 70.2250,
75.3084

■ 27.9044, 20.2821,
20.3502

■ 67.2481, 81.6786,
86.7705

■ 25.6172, 16.9456,
15.7715

■ 72.2204, 88.4434,
98.2305

■ 23.8169, 14.4017,
11.9136

■ 74.0600, 89.1792,
107.9177

■ 22.4657, 12.5834,
8.7376

■ 21.5199, 11.4125,
6.2007

■ 20.9137, 10.7673,
4.2501

Harmonies

Analogous

The Analogous color harmony consists of three colors that are next to each other on the color wheel.



42.2605, 42.6601, 49.4195



42.5505, 42.6601, 46.5490



42.2962, 42.6601, 43.7663

Triad

The Triadic color harmony groups three colors that are evenly spaced from another and form a triangle on the color wheel.



42.5505, 42.6601, 46.5490



39.5991, 42.6601, 41.6838



39.5399, 42.6601, 51.4591

Complementary

The Complementary color scheme is a pair of colors which are on the opposite of each other on the color wheel.



42.5505, 42.6601, 46.5490



42.7987, 47.1543, 51.1043

Split Complementary

Split-complementary colors differ from the complementary color scheme. The scheme consists of three colors, the original color and two neighbors of the complement color.



38.8470, 42.6601, 49.2404



42.5505, 42.6601, 46.5490



38.8807, 42.6601, 43.6011

Square

The Square scheme is like the rectangle color scheme, but the four colors are evenly spaced on the color wheel.



42.5505, 42.6601, 46.5490



40.5818, 42.6601, 41.0297



38.6077, 42.6601, 46.3503



40.5125, 42.6601, 52.3269

Rectangle

The Rectangle color scheme consists of four colors that form a rectangle on the color wheel.



42.5505, 42.6601, 46.5490



41.8546, 42.6601, 42.3177



38.6077, 42.6601, 46.3503



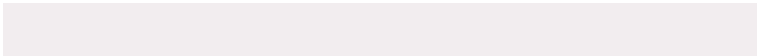
39.2672, 42.6601, 50.8420

Sweetspot

The Sweet Spot groups the original color and five complimentary colors.



42.5517, 42.6620, 46.5499



82.6405, 85.9387, 93.6585



42.7187, 42.6181, 52.4296



18.2205, 18.9590, 20.6614



90.7827, 95.5105, 104.0109



18.6292, 19.5994, 21.3438

Same Dimension

The Same Dimension uses a secret algorithm to generate beautiful new colors.



42.5517, 42.6620, 46.5499



75.3016, 74.4853, 81.2718



42.8346, 43.8468, 44.7360



9.1003, 9.0505, 9.8755



14.0316, 7.1864, 2.7872



0.5212, 0.2640, 0.2381

Inverse Universe

The Inverse Universe completely reimagines the original color for something new.



42.5517, 42.6620, 46.5499



75.3016, 74.4853, 81.2718



42.4895, 45.8655, 53.0685



9.1003, 9.0505, 9.8755



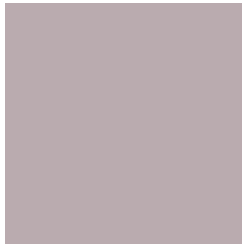
14.0316, 7.1864, 2.7872



0.5212, 0.2640, 0.2381

Previews

White Background



This preview shows how the XYZ color 42.5505, 42.6601, 46.5490 looks on a white background.

Color Contrast Check

Large Text (above 18pt) WCAG AA × Fail

Any Text WCAG AA × Fail

Large Text (above 18pt) WCAG AAA × Fail

Any Text WCAG AAA × Fail

Black Background



This preview shows how the XYZ color 42.5505, 42.6601, 46.5490 looks on a black background.

Color Contrast Check

Large Text (above 18pt) WCAG AA ✓ Pass

Any Text WCAG AA ✓ Pass

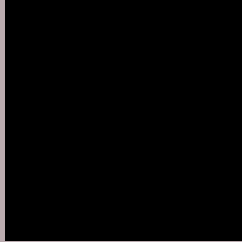
Large Text (above 18pt) WCAG AAA ✓ Pass

Any Text WCAG AAA ✓ Pass

If you want to check with other color combinations, try the [Color Contrast Checker](#).

XYZ 42.5505, 42.6601, 46.5490

Background



This preview shows how black text looks on a background with the XYZ color 42.5505, 42.6601, 46.5490.



This preview shows how white text looks on a background with the XYZ color 42.5505, 42.6601,

Color Blindness Simulation

Color vision deficiency is a very complex topic, and I could not describe the different causes any better than Wikipedia does, so if you want to learn more, you should check out their [article about color blindness](#).

Dichromacy



Original Color

42.5505, 42.6601, 46.5490

Protanopia

41.2033, 42.7935, 47.6833

Deuteranopia

43.4117, 42.5474, 46.4819



Tritanopia

43.4155, 42.7331, 50.7598

Trichromacy



Original Color

42.5505, 42.6601, 46.5490

Protanomaly

41.6024, 42.7250, 47.1284

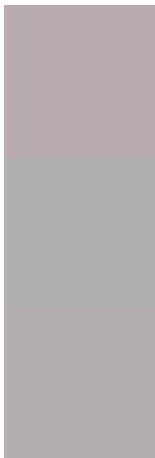
Deuteranomaly

43.0989, 42.6634, 46.5207

Tritanomaly

43.1065, 42.6095, 49.1325

Monochromacy



Original Color

42.5505, 42.6601, 46.5490

Achromatopsia

41.2663, 43.4154, 47.2793

Achromatomaly

41.7949, 43.1100, 47.1925

CSS Examples

Text

The CSS property to change the color of the text to XYZ 42.5505, 42.6601, 46.5490 is called "color". The color property can be set on classes, ids or directly on the HTML element.

This example shows how text in the color `rgb(186, 171, 175)` looks like.

```
.text, #text, p{  
    color:rgb(186, 171, 175)  
}
```

If you want to add a text shadow in that color use the text-shadow property, you can generate a text shadow directly with our [CSS Text Shadow Generator](#).

Here you see how black text with a 4 pixel rgb(186, 171, 175) colored shadow looks like.

```
.shadow{ text-shadow: 4px 4px 2px rgb(186, 171, 175) }
```

Border

The CSS property to change the border of an element to XYZ 42.5505, 42.6601, 46.5490 is called "border". The border property can be set on classes, ids or directly on the HTML element.

This example shows the color as border, it can be applied via the CSS property "border" or "border-color".

```
.border, #border, table{ border:4px solid rgb(186, 171, 175) }
```


If only the border color should be changed use the property `border-color`.

```
.border{ border-color:rgb(186, 171, 175) }
```

If you want to add a box shadow in that color use:

Here you see how a box with a 4 pixel `rgb(186, 171, 175)` colored shadow looks like.

```
.boxshadow{ -moz-box-shadow:4px 4px 4px  
4px rgb(186, 171, 175); -webkit-box-  
shadow:4px 4px 4px 4px rgb(186, 171, 175);  
box-shadow:4px 4px 4px 4px rgb(186, 171,  
175) }
```

Background

The CSS property to change the background color of an element to XYZ 42.5505, 42.6601, 46.5490 is called "background". The background property can be set on classes, ids or directly on the HTML element.

```
.background, #background, body{  
background: rgb(186, 171, 175) }
```

If only the background color should be changed can be used:

```
.background{ background-color: rgb(186,  
171, 175) }
```

This example shows the color as background, it is applied via the CSS property "background".

To optimize and compress your CSS code, you can use our [online CSS compressor and optimizer](#) based on csstidy. If you want to create a linear or radial gradient as background or border, check our [CSS Gradient Generator](#).

Hey! You found this booklet interesting? Support Converting Colors with the new Membership Option!

The pro membership hides all ads, plus gives you double the colors in the color bucket, and more awesome pro features!

[Learn more, Memberships starting at \\$2.50/m!](#)

**Follow me
on Twitter!**

@ConvertingColor