

Converting Colors

XYZ(42.5897, 40.4976, 38.4118)

Have a look what the booklet for
XYZ(42.5897, 40.4976, 38.4118)
contains.

XYZ(42.4670, 40.3496, 38.3509)	3
<i>Conversions</i>	4
<i>Details</i>	6
<i>Harmonies</i>	12
<i>Previews</i>	24
<i>Color Blindness Simulation</i>	28
<i>CSS Examples</i>	31

Color

**XYZ(42.4670, 40.3496,
38.3509)**

Conversions

Conversions Part 1

Format	Color
Hex	C6A29F
RGB	198, 162, 159
RGB Percent	78%, 64%, 62%
CMY	0.2235, 0.3647, 0.3765
CMYK	0.00, 0.18, 0.20, 0.22
HSL	5°, 25%, 70%
HSV	5°, 20%, 78%
XYZ	42.4670, 40.3496, 38.3509
YIQ	172.4220, 22.4190, 6.6990

Conversions

Conversions Part 2

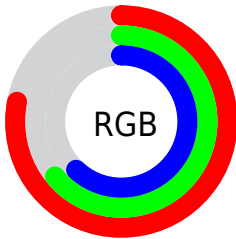
Format	Color
RYB	198, 162, 159
Decimal	13017759
CIELab	69.72, 12.77, 6.55
CIELCh	70, 14.351, 27.138
Yxy	40.3496, 0.3505, 0.3330
Android (android.graphics.Color)	4291207839 (0xFFC6A29F)
YUV	172.4220, -6.6170, 22.4319
Hunter-Lab	63.5213, 8.1733, 8.6687

Details

The XYZ color **42.4670, 40.3496, 38.3509** is a light color, and the websafe version is hex **CC9999**. A complement of this color would be **44.0058, 50.4771, 60.8500**, and the grayscale version is **39.4519, 41.5065, 45.2006**.

A 20% lighter version of the original color is **78.1905, 75.7407, 74.1167**, and **19.7843, 18.1639, 16.6506** is the 20% darker color. If you saturate the color by 10%, you get **37.8961, 33.7405, 29.0185**, and if you desaturate by 10%, it is **47.7832, 48.0081, 49.2906**.

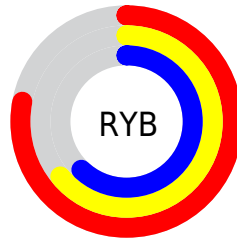
Distribution



Red (78%)

Green (64%)

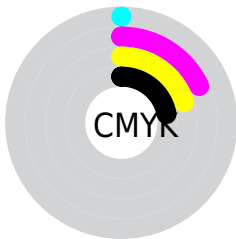
Blue (62%)



Red (78%)

Yellow (64%)

Blue (62%)

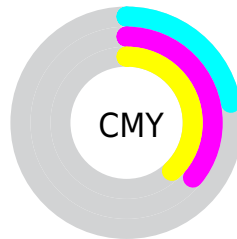


Cyan (0%)

Magenta (18%)

Yellow (20%)

Black (22%)



Cyan (22%)


Magenta (36%)


Yellow (38%)

Brightness & Saturation Gradients


These gradients show how the XYZ color 42.4670, 40.3496, 38.3509 changes by changing the brightness by 10 percent. The first figure shows a shift by +10% for each color and the second figure -10%.


Similar to the brightness gradients but the following saturation gradients show a change of the XYZ color 42.4670, 40.3496, 38.3509 by changing the saturation by 10% instead.


 42.4670, 40.3496,
38.3509


 42.4670, 40.3496,
38.3509


347.3740,
347.5949, 354.4661

 29.6598, 27.8112,
25.9512


 78.1667, 75.6956,
73.8550

 19.7273, 18.1834,
16.5617


 101.7899, 99.2720,
97.7966

 12.3041, 11.0817,
9.7639


129.7492,
127.2965, 126.4224

 7.0248, 6.1218,
5.1391

162.4099,
160.1535, 160.1512

 3.5241, 2.9193,
2.2690

200.1373,
198.2275, 199.4014

 1.4366, 1.0898,
0.7137

243.2969,

 0.2821, 0.0000,

241.9028, 244.5916

0.0000

292.2540,
291.5638, 296.1403

0.0000, 0.0000,
0.0000

42.4670, 40.3496,
38.3509

42.4670, 40.3496,
38.3509

37.8961, 33.7405,
29.0185

47.7832, 48.0081,
49.2906

34.0340, 28.1300,
21.2152

53.8725, 56.7532,
61.9055

30.8462, 23.4711,
14.8602

60.7654, 66.6270,
76.2630

28.2939, 19.7109,
9.8643

68.4895, 77.6676,
92.4257

26.3342, 16.7916,
6.1282

76.5843, 89.7167,
107.8884

■ 24.9191, 14.6481,
3.5394

■ 77.0988, 90.7458,
108.0599

■ 23.9930, 13.2064,
1.9652

■ 23.4745, 12.3719,
1.1680

■ 23.4632, 12.3546,
1.1480

Harmonies

Analogous

The Analogous color harmony consists of three colors that are next to each other on the color wheel.



42.9897, 40.3496, 44.5761



42.4670, 40.3496, 38.3509



40.8274, 40.3496, 34.0365

Triad

The Triadic color harmony groups three colors that are evenly spaced from another and form a triangle on the color wheel.



42.4670, 40.3496, 38.3509



34.7185, 40.3496, 37.3486



38.1284, 40.3496, 57.9960

Complementary

The Complementary color scheme is a pair of colors which are on the opposite of each other on the color wheel.



42.4670, 40.3496, 38.3509



44.0058, 50.4771, 60.8500

Split Complementary

Split-complementary colors differ from the complementary color scheme. The scheme consists of three colors, the original color and two neighbors of the complement color.



35.9769, 40.3496, 55.5849



42.4670, 40.3496, 38.3509



34.0587, 40.3496, 43.2978

Square

The Square scheme is like the rectangle color scheme, but the four colors are evenly spaced on the color wheel.



42.4670, 40.3496, 38.3509



36.3486, 40.3496, 33.5003



34.5101, 40.3496, 50.0339



40.4258, 40.3496, 56.3359

Rectangle

The Rectangle color scheme consists of four colors that form a rectangle on the color wheel.



42.4670, 40.3496, 38.3509



39.3545, 40.3496, 32.6005



34.5101, 40.3496, 50.0339



37.3648, 40.3496, 57.6295

Sweetspot

The Sweet Spot groups the original color and five complimentary colors.



42.4681, 40.3514, 38.3517



88.3429, 90.3721, 94.9920



45.5828, 40.7608, 57.3326



18.7595, 19.1284, 20.0227



0.0000, 0.0000, 0.0000



20.3446, 21.4041, 23.3091

Same Dimension

The Same Dimension uses a secret algorithm to generate beautiful new colors.



42.4681, 40.3514, 38.3517



71.2668, 65.7694, 59.8598



46.0913, 47.5978, 39.5595



10.6984, 10.7660, 11.0769



15.2837, 8.0846, 0.7549



0.7470, 0.4294, 0.0435

Inverse Universe

The Inverse Universe completely reimagines the original color for something new.



44.0058, 50.4771, 60.8500



74.5215, 87.2123, 107.5137



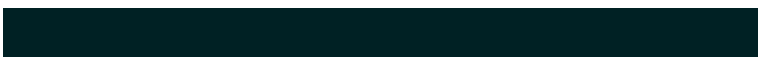
39.9973, 42.4601, 59.5138



10.8741, 11.9223, 13.6456



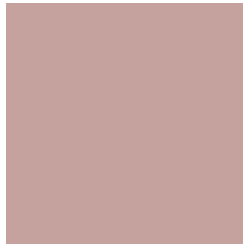
17.6361, 24.6661, 38.5759



0.8564, 1.2105, 1.8337

Previews

White Background



This preview shows how the XYZ color 42.4670, 40.3496, 38.3509 looks on a white background.

Color Contrast Check

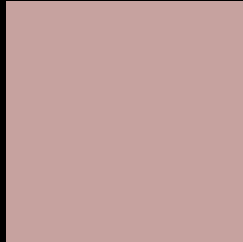
Large Text (above 18pt) WCAG AA × Fail

Any Text WCAG AA × Fail

Large Text (above 18pt) WCAG AAA × Fail

Any Text WCAG AAA × Fail

Black Background



This preview shows how the XYZ color 42.4670, 40.3496, 38.3509 looks on a black background.

Color Contrast Check

Large Text (above 18pt) WCAG AA ✓ Pass

Any Text WCAG AA ✓ Pass

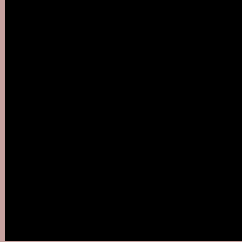
Large Text (above 18pt) WCAG AAA ✓ Pass

Any Text WCAG AAA ✓ Pass

If you want to check with other color combinations, try the [Color Contrast Checker](#).

XYZ 42.4670, 40.3496, 38.3509

Background



This preview shows how black text looks on a background with the XYZ color 42.4670, 40.3496, 38.3509.



This preview shows how white text looks on a background with the XYZ color 42.4670, 40.3496,

38.3509.

Color Blindness Simulation

Color vision deficiency is a very complex topic, and I could not describe the different causes any better than Wikipedia does, so if you want to learn more, you should check out their [article about color blindness](#).

Dichromacy



Original Color

42.4670, 40.3496, 38.3509

Protanopia

38.6648, 40.5078, 40.4313

Deuteranopia

41.1990, 40.4898, 38.4448



Tritanopia

43.8366, 40.3995, 44.5172

Trichromacy



Original Color

42.4670, 40.3496, 38.3509

Protanomaly

39.8687, 40.3133, 39.8624

Deuteranomaly

41.7816, 40.5235, 38.4206

Tritanomaly

43.2731, 40.4219, 42.0807

Monochromacy



Original Color

42.4670, 40.3496, 38.3509

Achromatopsia

39.2122, 41.2543, 44.9259

Achromatomaly

40.0337, 40.6190, 42.2895

CSS Examples

Text

The CSS property to change the color of the text to XYZ 42.4670, 40.3496, 38.3509 is called "color". The color property can be set on classes, ids or directly on the HTML element.

This example shows how text in the color `rgb(198, 162, 159)` looks like.

```
.text, #text, p{  
    color:rgb(198, 162, 159)  
}
```

If you want to add a text shadow in that color use the text-shadow property, you can generate a text shadow directly with our [CSS Text Shadow Generator](#).

Here you see how black text with a 4 pixel rgb(198, 162, 159) colored shadow looks like.

```
.shadow{ text-shadow: 4px 4px 2px rgb(198, 162, 159) }
```

Border

The CSS property to change the border of an element to XYZ 42.4670, 40.3496, 38.3509 is called "border". The border property can be set on classes, ids or directly on the HTML element.

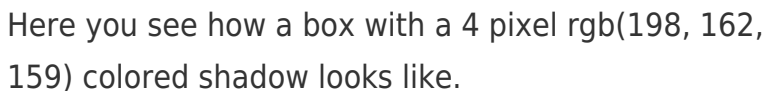
This example shows the color as border, it can be applied via the CSS property "border" or "border-color".

```
.border, #border, table{ border:4px solid rgb(198, 162, 159) }
```


If only the border color should be changed use the property `border-color`.

```
.border{ border-color:rgb(198, 162, 159) }
```

If you want to add a box shadow in that color use:



Here you see how a box with a 4 pixel `rgb(198, 162, 159)` colored shadow looks like.

```
.boxshadow{ -moz-box-shadow:4px 4px 4px 4px rgb(198, 162, 159); -webkit-box-shadow:4px 4px 4px 4px rgb(198, 162, 159); box-shadow:4px 4px 4px 4px rgb(198, 162, 159) }
```

Background

The CSS property to change the background color of an element to XYZ 42.4670, 40.3496, 38.3509 is called "background". The background property can be set on classes, ids or directly on the HTML element.

```
.background, #background, body{  
background: rgb(198, 162, 159) }
```

If only the background color should be changed can be used:

```
.background{ background-color: rgb(198,  
162, 159) }
```

This example shows the color as background, it is applied via the CSS property "background".

To optimize and compress your CSS code, you can use our [online CSS compressor and optimizer](#) based on csstidy. If you want to create a linear or radial gradient as background or border, check our [CSS Gradient Generator](#).

Hey! You found this booklet interesting? Support Converting Colors with the new Membership Option!

The pro membership hides all ads, plus gives you double the colors in the color bucket, and more awesome pro features!

[Learn more, Memberships starting at \\$2.50/m!](#)

**Follow me
on Twitter!**

@ConvertingColor