

Converting Colors

XYZ(42.6047, 39.0946, 37.9189)

Have a look what the booklet for
XYZ(42.6047, 39.0946, 37.9189)
contains.

XYZ(42.6721, 39.1737, 38.1131)	3
<i>Conversions</i>	4
<i>Details</i>	6
<i>Harmonies</i>	12
<i>Previews</i>	24
<i>Color Blindness Simulation</i>	28
<i>CSS Examples</i>	31

Color

**XYZ(42.6721, 39.1737,
38.1131)**

Conversions

Conversions Part 1

Format	Color
Hex	CA9D9F
RGB	202, 157, 159
RGB Percent	79%, 62%, 62%
CMY	0.2078, 0.3843, 0.3765
CMYK	0.00, 0.22, 0.21, 0.21
HSL	357°, 30%, 70%
HSV	357°, 22%, 79%
XYZ	42.6721, 39.1737, 38.1131
YIQ	170.6830, 26.1780, 10.1620

Conversions

Conversions Part 2

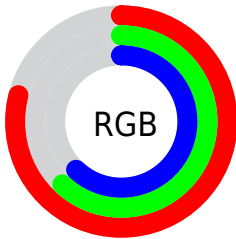
Format	Color
R _Y B	202, 157, 159
Decimal	13278623
CIE Lab	68.88, 17.01, 5.39
CIE LCh	69, 17.843, 17.577
Yxy	39.1737, 0.3557, 0.3266
Android (android.graphics.Color)	4291468703 (0xFFCA9D9F)
YUV	170.6830, -5.7597, 27.4650
Hunter-Lab	62.5889, 12.1679, 7.7080

Details

The XYZ color **42.6721, 39.1737, 38.1131** is a light color, and the websafe version is hex **CC9999**. A complement of this color would be **45.4521, 53.5802, 62.5927**, and the grayscale version is **38.5694, 40.5780, 44.1894**.

A 20% lighter version of the original color is **76.9211, 73.2020, 73.6935**, and **19.7910, 17.3889, 16.5007** is the 20% darker color. If you saturate the color by 10%, you get **37.9865, 32.2771, 28.9220**, and if you desaturate by 10%, it is **48.1865, 47.3086, 48.8720**.

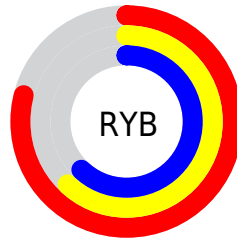
Distribution



Red (79%)

Green (62%)

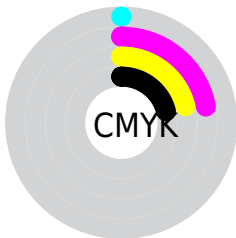
Blue (62%)



Red (79%)

Yellow (62%)

Blue (62%)

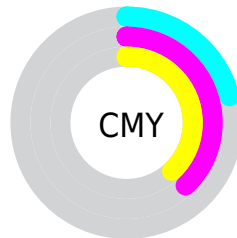


Cyan (0%)

Magenta (22%)

Yellow (21%)

Black (21%)



Cyan (21%)


Magenta (38%)


Yellow (38%)

Brightness & Saturation Gradients


These gradients show how the XYZ color 42.6721, 39.1737, 38.1131 changes by changing the brightness by 10 percent. The first figure shows a shift by +10% for each color and the second figure -10%.


Similar to the brightness gradients but the following saturation gradients show a change of the XYZ color 42.6721, 39.1737, 38.1131 by changing the saturation by 10% instead.


 42.6721, 39.1737,
38.1131


 42.6721, 39.1737,
38.1131


348.2060,
342.6284, 353.4176

 29.8213, 26.8949,
25.7680


 78.4746, 73.9036,
73.4868

 19.8504, 17.4943,
16.4259


 102.1571, 97.1235,
97.3525

 12.3940, 10.5875,
9.6684


130.1808,
124.7591, 125.8954

 7.0867, 5.7902,
5.0770


162.9111,
157.1950, 159.5341

 3.5632, 2.7179,
2.2330

200.7135,
194.8155, 198.6871

 1.4581, 0.9863,
0.6933

243.9532,

 0.2971, 0.0000,

238.0050, 243.7730

0.0000

292.9955,
287.1478, 295.2103

0.0000, 0.0000,
0.0000

42.6721, 39.1737,
38.1131

42.6721, 39.1737,
38.1131

37.9865, 32.2771,
28.9220

48.1865, 47.3086,
48.8720

34.0867, 26.5530,
21.2234

54.5636, 56.7325,
61.2646

30.9305, 21.9378,
14.9391

61.8394, 67.5001,
75.3558

28.4707, 18.3597,
9.9831

70.0469, 79.6611,
91.2064

26.6544, 15.7385,
6.2600

78.1673, 91.2966,
108.1099

■ 25.4215, 13.9823,
3.6616

■ 24.7003, 12.9810,
2.0610

■ 24.4063, 12.5763,
1.3984

Harmonies

Analogous

The Analogous color harmony consists of three colors that are next to each other on the color wheel.



42.8111, 39.1737, 46.0986



42.6721, 39.1737, 38.1131



41.0307, 39.1737, 32.1417

Triad

The Triadic color harmony groups three colors that are evenly spaced from another and form a triangle on the color wheel.



42.6721, 39.1737, 38.1131



33.3549, 39.1737, 32.9704



36.0737, 39.1737, 59.7767

Complementary

The Complementary color scheme is a pair of colors which are on the opposite of each other on the color wheel.



42.6721, 39.1737, 38.1131



45.4521, 53.5802, 62.5927

Split Complementary

Split-complementary colors differ from the complementary color scheme. The scheme consists of three colors, the original color and two neighbors of the complement color.



33.6780, 39.1737, 55.2386



42.6721, 39.1737, 38.1131



32.1625, 39.1737, 39.3844

Square

The Square scheme is like the rectangle color scheme, but the four colors are evenly spaced on the color wheel.



42.6721, 39.1737, 38.1131



35.6123, 39.1737, 29.4417



32.2777, 39.1737, 47.5409



38.9030, 39.1737, 59.3230

Rectangle

The Rectangle color scheme consists of four colors that form a rectangle on the color wheel.



42.6721, 39.1737, 38.1131



39.3503, 39.1737, 29.7954



32.2777, 39.1737, 47.5409



35.1939, 39.1737, 58.7627

Sweetspot

The Sweet Spot groups the original color and five complimentary colors.



42.6732, 39.1755, 38.1139



86.9917, 88.0849, 93.2613



46.4714, 40.6250, 61.2695



18.4787, 18.6452, 19.6875



0.0000, 0.0000, 0.0000



20.3446, 21.4041, 23.3091

Same Dimension

The Same Dimension uses a secret algorithm to generate beautiful new colors.



42.6732, 39.1755, 38.1139



68.0380, 60.1241, 56.2796



46.2156, 46.5354, 38.4469



11.2322, 11.2216, 11.7572



15.7138, 8.0961, 0.9456



0.8179, 0.4206, 0.0868

Inverse Universe

The Inverse Universe completely reimagines the original color for something new.



42.6732, 39.1755, 38.1139



68.0380, 60.1241, 56.2796



41.2436, 44.7875, 62.3485



11.2322, 11.2216, 11.7572



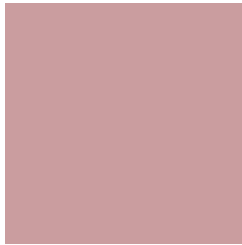
15.7138, 8.0961, 0.9456



0.8179, 0.4206, 0.0868

Previews

White Background



This preview shows how the XYZ color 42.6721, 39.1737, 38.1131 looks on a white background.

Color Contrast Check

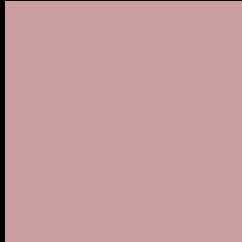
Large Text (above 18pt) WCAG AA × Fail

Any Text WCAG AA × Fail

Large Text (above 18pt) WCAG AAA × Fail

Any Text WCAG AAA × Fail

Black Background



This preview shows how the XYZ color 42.6721, 39.1737, 38.1131 looks on a black background.

Color Contrast Check

Large Text (above 18pt) WCAG AA ✓ Pass

Any Text WCAG AA ✓ Pass

Large Text (above 18pt) WCAG AAA ✓ Pass

Any Text WCAG AAA ✓ Pass

If you want to check with other color combinations, try the [Color Contrast Checker](#).

XYZ 42.6721, 39.1737, 38.1131

Background



This preview shows how black text looks on a background with the XYZ color 42.6721, 39.1737, 38.1131.



This preview shows how white text looks on a background with the XYZ color 42.6721, 39.1737,

Color Blindness Simulation

Color vision deficiency is a very complex topic, and I could not describe the different causes any better than Wikipedia does, so if you want to learn more, you should check out their [article about color blindness](#).

Dichromacy



Original Color

42.6721, 39.1737, 38.1131

Protanopia

37.8074, 39.4925, 41.2275

Deuteranopia

40.0078, 39.3544, 37.8353



Tritanopia

43.5850, 39.3006, 42.3344

Trichromacy



Original Color

42.6721, 39.1737, 38.1131

Protanomaly

39.4148, 39.2625, 40.1514

Deuteranomaly

40.9087, 39.2958, 37.7765

Tritanomaly

43.3086, 39.1901, 40.8791

Monochromacy



Original Color

42.6721, 39.1737, 38.1131

Achromatopsia

38.7082, 40.7240, 44.3485

Achromatomaly

39.9027, 40.0075, 42.1783

CSS Examples

Text

The CSS property to change the color of the text to XYZ 42.6721, 39.1737, 38.1131 is called "color". The color property can be set on classes, ids or directly on the HTML element.

This example shows how text in the color `rgb(202, 157, 159)` looks like.

```
.text, #text, p{  
    color:rgb(202, 157, 159)  
}
```

If you want to add a text shadow in that color use the text-shadow property, you can generate a text shadow directly with our [CSS Text Shadow Generator](#).

Here you see how black text with a 4 pixel rgb(202, 157, 159) colored shadow looks like.

```
.shadow{ text-shadow: 4px 4px 2px rgb(202, 157, 159) }
```

Border

The CSS property to change the border of an element to XYZ 42.6721, 39.1737, 38.1131 is called "border". The border property can be set on classes, ids or directly on the HTML element.

This example shows the color as border, it can be applied via the CSS property "border" or "border-color".

```
.border, #border, table{ border:4px solid rgb(202, 157, 159) }
```


If only the border color should be changed use the property `border-color`.

```
.border{ border-color:rgb(202, 157, 159) }
```

If you want to add a box shadow in that color use:

Here you see how a box with a 4 pixel `rgb(202, 157, 159)` colored shadow looks like.

```
.boxshadow{ -moz-box-shadow:4px 4px 4px  
4px rgb(202, 157, 159); -webkit-box-  
shadow:4px 4px 4px 4px rgb(202, 157, 159);  
box-shadow:4px 4px 4px 4px rgb(202, 157,  
159) }
```

Background

The CSS property to change the background color of an element to XYZ 42.6721, 39.1737, 38.1131 is called "background". The background property can be set on classes, ids or directly on the HTML element.

```
.background, #background, body{  
background: rgb(202, 157, 159) }
```

If only the background color should be changed can be used:

```
.background{ background-color: rgb(202,  
157, 159) }
```

This example shows the color as background, it is applied via the CSS property "background".

To optimize and compress your CSS code, you can use our [online CSS compressor and optimizer](#) based on csstidy. If you want to create a linear or radial gradient as background or border, check our [CSS Gradient Generator](#).

Hey! You found this booklet interesting? Support Converting Colors with the new Membership Option!

The pro membership hides all ads, plus gives you double the colors in the color bucket, and more awesome pro features!

[Learn more, Memberships starting at \\$2.50/m!](#)

**Follow me
on Twitter!**

@ConvertingColor