

Converting Colors

XYZ(42.6177, 41.5359, 46.0682)

Have a look what the booklet for
XYZ(42.6177, 41.5359, 46.0682)
contains.

XYZ(42.6939, 41.6406, 45.8316)	3
<i>Conversions</i>	4
<i>Details</i>	6
<i>Harmonies</i>	12
<i>Previews</i>	24
<i>Color Blindness Simulation</i>	28
<i>CSS Examples</i>	31

Color

**XYZ(42.6939, 41.6406,
45.8316)**

Conversions

Conversions Part 1

Format	Color
Hex	BEA7AE
RGB	190, 167, 174
RGB Percent	75%, 65%, 68%
CMY	0.2549, 0.3451, 0.3176
CMYK	0.00, 0.12, 0.08, 0.25
HSL	342°, 15%, 70%
HSV	342°, 12%, 75%
XYZ	42.6939, 41.6406, 45.8316
YIQ	174.6750, 11.4610, 7.0530

Conversions

Conversions Part 2

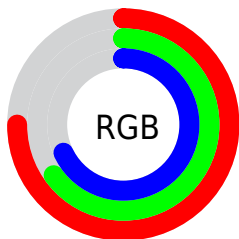
Format	Color
RYB	190, 167, 174
Decimal	12494766
CIELab	70.62, 9.55, -0.54
CIElCh	71, 9.567, 356.774
Yxy	41.6406, 0.3280, 0.3199
Android (android.graphics.Color)	4290684846 (0xFFBEA7AE)
YUV	174.6750, -0.3328, 13.4400
Hunter-Lab	64.5295, 5.1721, 3.0604

Details

The XYZ color **42.6939, 41.6406, 45.8316** is a light color, and the websafe version is hex **999999**. A complement of this color would be **42.8987, 48.4624, 51.8953**, and the grayscale version is **40.5781, 42.6913, 46.4909**.

A 20% lighter version of the original color is **78.2702, 77.4925, 84.9610**, and **19.9601, 18.9850, 21.0248** is the 20% darker color. If you saturate the color by 10%, you get **38.2398, 34.6940, 38.2985**, and if you desaturate by 10%, it is **47.7886, 49.6644, 54.2050**.

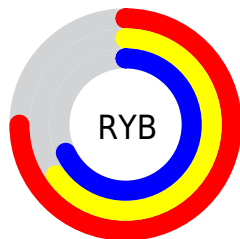
Distribution



Red (75%)

Green (65%)

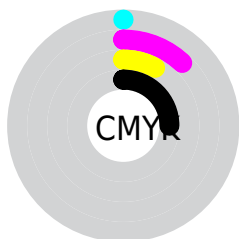
Blue (68%)



Red (75%)

Yellow (65%)

Blue (68%)

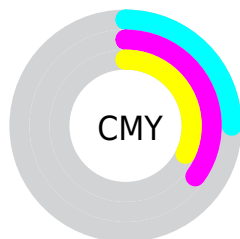


Cyan (0%)

Magenta (12%)

Yellow (8%)

Black (25%)



Cyan (25%)

Magenta (35%)

Yellow (32%)

Brightness & Saturation Gradients

These gradients show how the XYZ color 42.6939, 41.6406, 45.8316 changes by changing the brightness by 10 percent. The first figure shows a shift by +10% for each color and the second figure -10%.

Similar to the brightness gradients but the following saturation gradients show a change of the XYZ color 42.6939, 41.6406, 45.8316 by changing the saturation by 10% instead.

■ 42.6939, 41.6406,
45.8316

■ 42.6939, 41.6406,
45.8316

348.2943,
352.9909, 386.3891

■ 29.8385, 28.8200,
31.7652

■ 78.5073, 77.6554,
85.2985

■ 19.8635, 18.9447,
20.9189

■ 102.1961,
101.6184, 111.5362

■ 12.4035, 11.6303,
12.8741

130.2266,
130.0642, 142.6681

■ 7.0933, 6.4925,
7.2122

162.9644,
163.3774, 179.1127

■ 3.5674, 3.1468,
3.5147

200.7747,
201.9422, 221.2885

■ 1.4604, 1.2088,
1.3631

244.0229,

■ 0.2987, 0.0689,

246.1432, 269.6142

0.1127

293.0743,
296.3646, 324.5082

■ 0.0000, 0.0000,
0.0000

■ 42.6939, 41.6406,
45.8316

■ 42.6939, 41.6406,
45.8316

■ 38.2398, 34.6940,
38.2985

■ 47.7886, 49.6644,
54.2050

■ 34.3970, 28.7732,
31.5765

■ 53.5447, 58.8029,
63.4416

■ 31.1389, 23.8309,
25.6385

■ 59.9865, 69.0989,
73.5663

■ 28.4356, 19.8137,
20.4546

■ 67.1359, 80.5908,
84.6025

■ 26.2547, 16.6632,
15.9931

■ 72.7382, 88.7644,
95.8141

■ 24.5600, 14.3143,
12.2199

■ 74.7757, 89.5794,
106.5435

■ 23.3103, 12.6926,
9.0977

■ 75.0454, 89.6873,
107.9638

■ 22.4572, 11.7094,
6.5848

■ 21.9942, 11.2508,
4.9896

Harmonies

Analogous

The Analogous color harmony consists of three colors that are next to each other on the color wheel.



42.1779, 41.6406, 50.2831



42.6939, 41.6406, 45.8316



42.3568, 41.6406, 41.5269

Triad

The Triadic color harmony groups three colors that are evenly spaced from another and form a triangle on the color wheel.



42.6939, 41.6406, 45.8316



38.2235, 41.6406, 37.9973



37.9345, 41.6406, 53.0253

Complementary

The Complementary color scheme is a pair of colors which are on the opposite of each other on the color wheel.



42.6939, 41.6406, 45.8316



42.8987, 48.4624, 51.8953

Split Complementary

Split-complementary colors differ from the complementary color scheme. The scheme consists of three colors, the original color and two neighbors of the complement color.



36.9237, 41.6406, 49.3787



42.6939, 41.6406, 45.8316



37.0874, 41.6406, 40.7311

Square

The Square scheme is like the rectangle color scheme, but the four colors are evenly spaced on the color wheel.



42.6939, 41.6406, 45.8316



39.7496, 41.6406, 37.1851



36.6178, 41.6406, 44.8510



39.4072, 41.6406, 54.6066

Rectangle

The Rectangle color scheme consists of four colors that form a rectangle on the color wheel.



42.6939, 41.6406, 45.8316



41.6985, 41.6406, 39.2827



36.6178, 41.6406, 44.8510



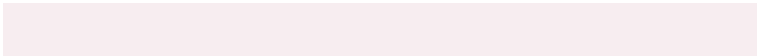
37.5309, 41.6406, 51.9890

Sweetspot

The Sweet Spot groups the original color and five complimentary colors.



42.6951, 41.6424, 45.8325



84.6953, 86.9896, 95.1284



42.5755, 41.3897, 54.4607



18.4385, 18.8499, 20.6284



92.9021, 97.7402, 106.4391



19.4759, 20.4902, 22.3138

Same Dimension

The Same Dimension uses a secret algorithm to generate beautiful new colors.



42.6951, 41.6424, 45.8325



74.7117, 71.3024, 78.6064



42.8155, 42.9467, 42.5944



9.6465, 9.5829, 10.5273



14.6558, 7.4935, 3.4812



0.6041, 0.3055, 0.2945

Inverse Universe

The Inverse Universe completely reimagines the original color for something new.



42.6951, 41.6424, 45.8325



74.7117, 71.3024, 78.6064



42.7453, 46.9610, 55.5271



9.6465, 9.5829, 10.5273



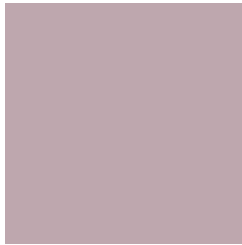
14.6558, 7.4935, 3.4812



0.6041, 0.3055, 0.2945

Previews

White Background



This preview shows how the XYZ color 42.6939, 41.6406, 45.8316 looks on a white background.

Color Contrast Check

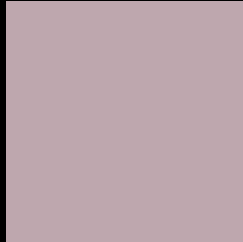
Large Text (above 18pt) WCAG AA × Fail

Any Text WCAG AA × Fail

Large Text (above 18pt) WCAG AAA × Fail

Any Text WCAG AAA × Fail

Black Background



This preview shows how the XYZ color 42.6939, 41.6406, 45.8316 looks on a black background.

Color Contrast Check

Large Text (above 18pt) WCAG AA ✓ Pass

Any Text WCAG AA ✓ Pass

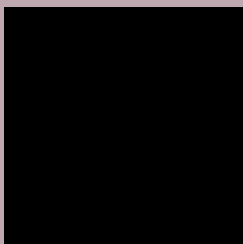
Large Text (above 18pt) WCAG AAA ✓ Pass

Any Text WCAG AAA ✓ Pass

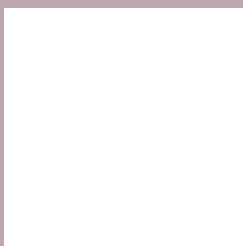
If you want to check with other color combinations, try the [Color Contrast Checker](#).

XYZ 42.6939, 41.6406, 45.8316

Background



This preview shows how black text looks on a background with the XYZ color 42.6939, 41.6406, 45.8316.



This preview shows how white text looks on a background with the XYZ color 42.6939, 41.6406,

45.8316.

Color Blindness Simulation

Color vision deficiency is a very complex topic, and I could not describe the different causes any better than Wikipedia does, so if you want to learn more, you should check out their [article about color blindness](#).

Dichromacy



Original Color

42.6939, 41.6406, 45.8316

Protanopia

40.3675, 41.7933, 47.5343

Deuteranopia

42.4450, 41.5122, 45.8200



Tritanopia

43.2588, 41.6035, 48.3981

Trichromacy



Original Color

42.6939, 41.6406, 45.8316

Protanomaly

41.0336, 41.5873, 46.9388

Deuteranomaly

42.4450, 41.5122, 45.8200

Tritanomaly

43.0579, 41.5231, 47.3403

Monochromacy



Original Color

42.6939, 41.6406, 45.8316

Achromatopsia

40.7470, 42.8690, 46.6844

Achromatomaly

41.3128, 42.3035, 46.5454

CSS Examples

Text

The CSS property to change the color of the text to XYZ 42.6939, 41.6406, 45.8316 is called "color". The color property can be set on classes, ids or directly on the HTML element.

This example shows how text in the color `rgb(190, 167, 174)` looks like.

```
.text, #text, p{  
    color:rgb(190, 167, 174)  
}
```

If you want to add a text shadow in that color use the text-shadow property, you can generate a text shadow directly with our [CSS Text Shadow Generator](#).

Here you see how black text with a 4 pixel rgb(190, 167, 174) colored shadow looks like.

```
.shadow{ text-shadow: 4px 4px 2px rgb(190, 167, 174) }
```

Border

The CSS property to change the border of an element to XYZ 42.6939, 41.6406, 45.8316 is called "border". The border property can be set on classes, ids or directly on the HTML element.

This example shows the color as border, it can be applied via the CSS property "border" or "border-color".

```
.border, #border, table{ border:4px solid rgb(190, 167, 174) }
```


If only the border color should be changed use the property border-color.

```
.border{ border-color:rgb(190, 167, 174) }
```

If you want to add a box shadow in that color use:

Here you see how a box with a 4 pixel rgb(190, 167, 174) colored shadow looks like.

```
.boxshadow{ -moz-box-shadow:4px 4px 4px  
4px rgb(190, 167, 174); -webkit-box-  
shadow:4px 4px 4px 4px rgb(190, 167, 174);  
box-shadow:4px 4px 4px 4px rgb(190, 167,  
174) }
```

Background

The CSS property to change the background color of an element to XYZ 42.6939, 41.6406, 45.8316 is called "background". The background property can be set on classes, ids or directly on the HTML element.

```
.background, #background, body{  
background: rgb(190, 167, 174) }
```

If only the background color should be changed can be used:

```
.background{ background-color: rgb(190,  
167, 174) }
```

This example shows the color as background, it is applied via the CSS property "background".

To optimize and compress your CSS code, you can use our [online CSS compressor and optimizer](#) based on csstidy. If you want to create a linear or radial gradient as background or border, check our [CSS Gradient Generator](#).

Hey! You found this booklet interesting? Support Converting Colors with the new Membership Option!

The pro membership hides all ads, plus gives you double the colors in the color bucket, and more awesome pro features!

[Learn more, Memberships starting at \\$2.50/m!](#)

**Follow me
on Twitter!**

@ConvertingColor