

Converting Colors

XYZ(42.6527, 43.4367, 31.4459)

Have a look what the booklet for
XYZ(42.6527, 43.4367, 31.4459)
contains.

XYZ(42.5862, 43.2985, 31.3122)	3
<i>Conversions</i>	4
<i>Details</i>	6
<i>Harmonies</i>	12
<i>Previews</i>	24
<i>Color Blindness Simulation</i>	28
<i>CSS Examples</i>	31

Color

**XYZ(42.5862, 43.2985,
31.3122)**

Conversions

Conversions Part 1

Format	Color
Hex	C5AC8D
RGB	197, 172, 141
RGB Percent	77%, 67%, 55%
CMY	0.2275, 0.3255, 0.4471
CMYK	0.00, 0.13, 0.28, 0.23
HSL	33°, 33%, 66%
HSV	33°, 28%, 77%
XYZ	42.5862, 43.2985, 31.3122
YIQ	175.9410, 24.8510, -4.3410

Conversions

Conversions Part 2

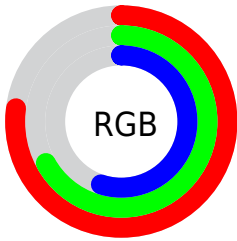
Format	Color
RYB	186, 197, 141
Decimal	12954765
CIELab	71.76, 4.34, 19.29
CIELCh	72, 19.775, 77.327
Yxy	43.2985, 0.3634, 0.3695
Android (android.graphics.Color)	4291144845 (0xFFC5AC8D)
YUV	175.9410, -17.2259, 18.4687
Hunter-Lab	65.8016, 0.3708, 17.8475

Details

The XYZ color **42.5862, 43.2985, 31.3122** is a light color, and the websafe version is hex **CCCC99**. A complement of this color would be **34.6984, 36.9652, 58.1296**, and the grayscale version is **41.3149, 43.4665, 47.3350**.

A 20% lighter version of the original color is **78.1925, 79.9491, 62.9403**, and **19.7601, 19.9391, 12.7047** is the 20% darker color. If you saturate the color by 10%, you get **39.6306, 39.5280, 23.7271**, and if you desaturate by 10%, it is **45.9156, 47.3988, 40.3092**.

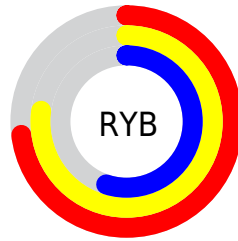
Distribution



Red (77%)

Green (67%)

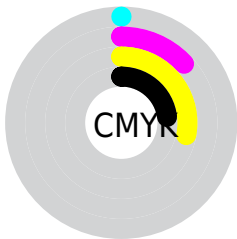
Blue (55%)



Red (73%)

Yellow (77%)

Blue (55%)

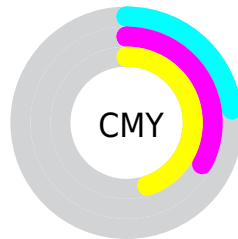


Cyan (0%)

Magenta (13%)

Yellow (28%)

Black (23%)



Cyan (23%)

Magenta (33%)

Yellow (45%)

Brightness & Saturation Gradients

These gradients show how the XYZ color 42.5862, 43.2985, 31.3122 changes by changing the brightness by 10 percent. The first figure shows a shift by +10% for each color and the second figure -10%.

Similar to the brightness gradients but the following saturation gradients show a change of the XYZ color 42.5862, 43.2985, 31.3122 by changing the saturation by 10% instead.

■ 42.5862, 43.2985,
31.3122

■ 42.5862, 43.2985,
31.3122

347.8577,
359.8379, 322.3697

■ 29.7537, 30.1194,
20.5762

■ 78.3457, 80.1611,
62.8166

■ 19.7988, 19.9292,
12.6264

■ 102.0033,
104.6134, 84.4221

■ 12.3563, 12.3436,
7.0441

■ 130.0001,
133.5922, 110.4879

■ 7.0608, 6.9781,
3.4108

162.7013,
167.4820, 141.4325

■ 3.5468, 3.4484,
1.3080

200.4723,
206.6670, 177.6744

■ 1.4491, 1.3701,
0.0684

243.6784,

■ 0.2908, 0.1945,

251.5317, 219.6322

0.0000

292.6851,
302.4606, 267.7245

■ 0.0000, 0.0000,
0.0000

■ 42.5862, 43.2985,
31.3122

■ 42.5862, 43.2985,
31.3122

■ 39.6306, 39.5280,
23.7271

■ 45.9156, 47.3988,
40.3092

■ 37.0294, 36.0715,
17.4778

■ 49.6302, 51.8321,
50.7836

■ 34.7665, 32.9207,
12.4849

■ 53.7453, 56.6093,
62.7998

■ 32.8229, 30.0642,
8.6595

■ 58.2738, 61.7388,
76.4178

■ 31.1773, 27.4898,
5.9007

■ 63.2285, 67.2287,
91.6943

■ 29.8049, 25.1839,
4.0903

■ 67.9374, 72.8131,
105.0814

■ 28.6680, 23.1271,
3.0421

■ 70.3728, 77.6839,
105.8932

■ 28.5020, 22.8224,
2.9029

■ 72.9323, 82.8030,
106.7464

■ 75.6178, 88.1740,
107.6415

Harmonies

Analogous

The Analogous color harmony consists of three colors that are next to each other on the color wheel.



45.6856, 43.2985, 34.8182



42.5862, 43.2985, 31.3122



39.2614, 43.2985, 31.6089

Triad

The Triadic color harmony groups three colors that are evenly spaced from another and form a triangle on the color wheel.



42.5862, 43.2985, 31.3122



35.2949, 43.2985, 52.8670



46.0841, 43.2985, 60.8165

Complementary

The Complementary color scheme is a pair of colors which are on the opposite of each other on the color wheel.



42.5862, 43.2985, 31.3122



34.6984, 36.9652, 58.1296

Split Complementary

Split-complementary colors differ from the complementary color scheme. The scheme consists of three colors, the original color and two neighbors of the complement color.



43.1063, 43.2985, 67.0836



42.5862, 43.2985, 31.3122



36.9323, 43.2985, 62.0830

Square

The Square scheme is like the rectangle color scheme, but the four colors are evenly spaced on the color wheel.



42.5862, 43.2985, 31.3122



35.1726, 43.2985, 43.2046



39.7541, 43.2985, 67.5763



47.7776, 43.2985, 51.3173

Rectangle

The Rectangle color scheme consists of four colors that form a rectangle on the color wheel.



42.5862, 43.2985, 31.3122



37.3630, 43.2985, 33.9206



39.7541, 43.2985, 67.5763



45.1930, 43.2985, 63.4240

Sweetspot

The Sweet Spot groups the original color and five complimentary colors.



42.5873, 43.3005, 31.3131



88.3913, 92.2465, 89.5278



39.4525, 33.6811, 40.5948



18.7011, 19.4866, 18.5390



0.0000, 0.0000, 0.0000



20.3446, 21.4041, 23.3091

Same Dimension

The Same Dimension uses a secret algorithm to generate beautiful new colors.



42.5873, 43.3005, 31.3131



72.9691, 73.3647, 47.5074



47.0737, 53.3515, 33.0167



11.1126, 11.5943, 11.2150



18.8315, 15.1802, 1.9375



0.9632, 0.8618, 0.1156

Inverse Universe

The Inverse Universe completely reimagines the original color for something new.



34.6984, 36.9652, 58.1296



56.5748, 60.2027, 103.2462



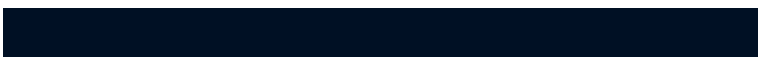
31.0701, 28.9928, 56.7820



10.4399, 11.0538, 13.5009



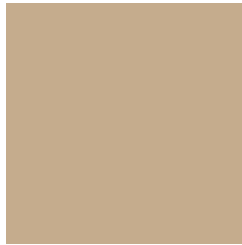
9.0011, 7.3962, 35.6975



0.4982, 0.4942, 1.7143

Previews

White Background



This preview shows how the XYZ color 42.5862, 43.2985, 31.3122 looks on a white background.

Color Contrast Check

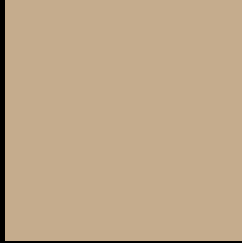
Large Text (above 18pt) WCAG AA × Fail

Any Text WCAG AA × Fail

Large Text (above 18pt) WCAG AAA × Fail

Any Text WCAG AAA × Fail

Black Background



This preview shows how the XYZ color 42.5862, 43.2985, 31.3122 looks on a black background.

Color Contrast Check

Large Text (above 18pt) WCAG AA ✓ Pass

Any Text WCAG AA ✓ Pass

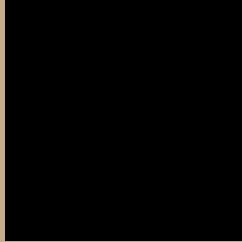
Large Text (above 18pt) WCAG AAA ✓ Pass

Any Text WCAG AAA ✓ Pass

If you want to check with other color combinations, try the [Color Contrast Checker](#).

XYZ 42.5862, 43.2985, 31.3122

Background



This preview shows how black text looks on a background with the XYZ color 42.5862, 43.2985, 31.3122.



This preview shows how white text looks on a background with the XYZ color 42.5862, 43.2985,

Color Blindness Simulation

Color vision deficiency is a very complex topic, and I could not describe the different causes any better than Wikipedia does, so if you want to learn more, you should check out their [article about color blindness](#).

Dichromacy



Original Color

42.5862, 43.2985, 31.3122

Protanopia

40.7330, 43.4729, 32.2309

Deuteranopia

44.2473, 43.3081, 31.6184



Tritanopia

46.1443, 43.3502, 49.1154

Trichromacy



Original Color

42.5862, 43.2985, 31.3122

Protanomaly

41.4477, 43.5601, 31.8146

Deuteranomaly

43.6143, 43.2590, 31.6423

Tritanomaly

44.8903, 43.4085, 42.0891

Monochromacy



Original Color

42.5862, 43.2985, 31.3122

Achromatopsia

41.2663, 43.4154, 47.2793

Achromatomaly

41.7080, 43.4946, 40.8474

CSS Examples

Text

The CSS property to change the color of the text to XYZ 42.5862, 43.2985, 31.3122 is called "color". The color property can be set on classes, ids or directly on the HTML element.

This example shows how text in the color `rgb(197, 172, 141)` looks like.

```
.text, #text, p{  
    color:rgb(197, 172, 141)  
}
```

If you want to add a text shadow in that color use the text-shadow property, you can generate a text shadow directly with our [CSS Text Shadow Generator](#).

Here you see how black text with a 4 pixel rgb(197, 172, 141) colored shadow looks like.

```
.shadow{ text-shadow: 4px 4px 2px rgb(197, 172, 141) }
```

Border

The CSS property to change the border of an element to XYZ 42.5862, 43.2985, 31.3122 is called "border". The border property can be set on classes, ids or directly on the HTML element.

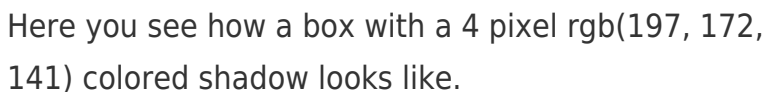
This example shows the color as border, it can be applied via the CSS property "border" or "border-color".

```
.border, #border, table{ border:4px solid rgb(197, 172, 141) }
```


If only the border color should be changed use the property `border-color`.

```
.border{ border-color:rgb(197, 172, 141) }
```

If you want to add a box shadow in that color use:



Here you see how a box with a 4 pixel `rgb(197, 172, 141)` colored shadow looks like.

```
.boxshadow{ -moz-box-shadow:4px 4px 4px 4px rgb(197, 172, 141); -webkit-box-shadow:4px 4px 4px 4px rgb(197, 172, 141); box-shadow:4px 4px 4px 4px rgb(197, 172, 141) }
```

Background

The CSS property to change the background color of an element to XYZ 42.5862, 43.2985, 31.3122 is called "background". The background property can be set on classes, ids or directly on the HTML element.

```
.background, #background, body{  
background: rgb(197, 172, 141) }
```

If only the background color should be changed can be used:

```
.background{ background-color: rgb(197,  
172, 141) }
```

This example shows the color as background, it is applied via the CSS property "background".

To optimize and compress your CSS code, you can use our [online CSS compressor and optimizer](#) based on csstidy. If you want to create a linear or radial gradient as background or border, check our [CSS Gradient Generator](#).

Hey! You found this booklet interesting? Support Converting Colors with the new Membership Option!

The pro membership hides all ads, plus gives you double the colors in the color bucket, and more awesome pro features!

[Learn more, Memberships starting at \\$2.50/m!](#)

**Follow me
on Twitter!**

@ConvertingColor