

Converting Colors

XYZ(42.6583, 41.2425, 39.4548)

Have a look what the booklet for
XYZ(42.6583, 41.2425, 39.4548)
contains.

XYZ(42.6531, 41.2192, 39.4263)	3
<i>Conversions</i>	4
<i>Details</i>	6
<i>Harmonies</i>	12
<i>Previews</i>	24
<i>Color Blindness Simulation</i>	28
<i>CSS Examples</i>	31

Color

**XYZ(42.6531, 41.2192,
39.4263)**

Conversions

Conversions Part 1

Format	Color
Hex	C4A5A1
RGB	196, 165, 161
RGB Percent	77%, 65%, 63%
CMY	0.2314, 0.3529, 0.3686
CMYK	0.00, 0.16, 0.18, 0.23
HSL	7°, 23%, 70%
HSV	7°, 18%, 77%
XYZ	42.6531, 41.2192, 39.4263
YIQ	173.8130, 19.7600, 5.3280

Conversions

Conversions Part 2

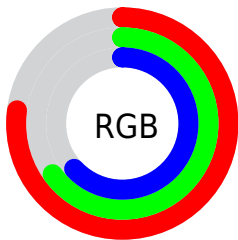
Format	Color
R_{YB}	196, 166, 161
Decimal	12887457
CIE _{Lab}	70.33, 10.69, 6.29
CIE _{LCh}	70, 12.407, 30.473
Yxy	41.2192, 0.3459, 0.3343
Android (android.graphics.Color)	4291077537 (0xFFC4A5A1)
YUV	173.8130, -6.3168, 19.4580
Hunter-Lab	64.2022, 6.2337, 8.5318

Details

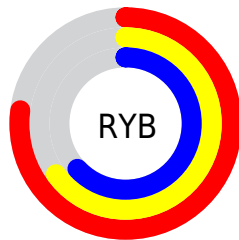
The XYZ color **42.6531, 41.2192, 39.4263** is a light color, and the websafe version is hex **CC9999**. A complement of this color would be **43.5111, 49.2608, 59.4399**, and the grayscale version is **40.1613, 42.2528, 46.0133**.

A 20% lighter version of the original color is **78.4959, 77.0269, 75.6962**, and **19.8749, 18.6868, 17.3112** is the 20% darker color. If you saturate the color by 10%, you get **38.1373, 34.7400, 30.0516**, and if you desaturate by 10%, it is **47.8671, 48.6604, 50.3715**.

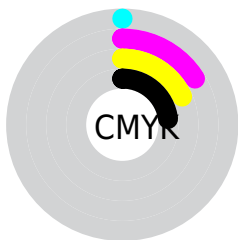
Distribution



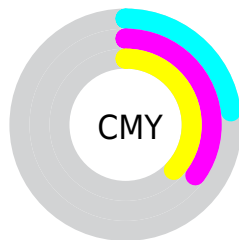
- Red (77%)
- Green (65%)
- Blue (63%)



- Red (77%)
- Yellow (65%)
- Blue (63%)



- Cyan (0%)
- Magenta (16%)
- Yellow (18%)
- Black (23%)





- Cyan (23%)
- Magenta (35%)
- Yellow (37%)

Brightness & Saturation Gradients


These gradients show how the XYZ color 42.6531, 41.2192, 39.4263 changes by changing the brightness by 10 percent. The first figure shows a shift by +10% for each color and the second figure -10%.


Similar to the brightness gradients but the following saturation gradients show a change of the XYZ color 42.6531, 41.2192, 39.4263 by changing the saturation by 10% instead.


 42.6531, 41.2192,
39.4263


 42.6531, 41.2192,
39.4263


348.1289,
351.2359, 359.1795

 29.8064, 28.4904,
26.7811


 78.4461, 77.0165,
75.5166

 19.8390, 18.6957,
17.1779

 102.1231,
100.8539, 99.7988

 12.3857, 11.4506,
10.1981


130.1408,
129.1628, 128.7972

 7.0810, 6.3708,
5.4232

162.8647,
162.3278, 162.9302

 3.5596, 3.0718,
2.4346

200.6601,
200.7332, 202.6164

 1.4561, 1.1693,
0.8052

243.8924,

 0.2957, 0.0364,

244.7634, 248.2743

0.0000

292.9269,
294.8029, 300.3225

■ 0.0000, 0.0000,
0.0000

■ 42.6531, 41.2192,
39.4263

■ 42.6531, 41.2192,
39.4263

■ 38.1373, 34.7400,
30.0516

■ 47.8671, 48.6604,
50.3715

■ 34.2867, 29.1782,
22.1727

■ 53.8037, 57.0948,
62.9517

■ 31.0707, 24.4939,
15.7129

■ 60.4903, 66.5591,
77.2314

■ 28.4550, 20.6421,
10.5877

■ 67.9519, 77.0865,
93.2705

■ 26.4020, 17.5740,
6.7034

■ 75.5613, 88.4482,
107.6974

■ 24.8696, 15.2353,
3.9542

■ 76.5751, 90.4758,
108.0354

■ 23.8100, 13.5651,
2.2167

■ 23.1606, 12.4900,
1.3107

■ 23.0601, 12.3258,
1.1637

Harmonies

Analogous

The Analogous color harmony consists of three colors that are next to each other on the color wheel.



43.2284, 41.2192, 44.7881



42.6531, 41.2192, 39.4263



41.1409, 41.2192, 35.8063

Triad

The Triadic color harmony groups three colors that are evenly spaced from another and form a triangle on the color wheel.



42.6531, 41.2192, 39.4263



35.8657, 41.2192, 39.5736



39.2100, 41.2192, 57.0649

Complementary

The Complementary color scheme is a pair of colors which are on the opposite of each other on the color wheel.



42.6531, 41.2192, 39.4263



43.5111, 49.2608, 59.4399

Split Complementary

Split-complementary colors differ from the complementary color scheme. The scheme consists of three colors, the original color and two neighbors of the complement color.



37.2778, 41.2192, 55.3716



42.6531, 41.2192, 39.4263



35.3881, 41.2192, 44.9734

Square

The Square scheme is like the rectangle color scheme, but the four colors are evenly spaced on the color wheel.



42.6531, 41.2192, 39.4263



37.2237, 41.2192, 35.8861



35.8962, 41.2192, 50.8163



41.1988, 41.2192, 55.2652

Rectangle

The Rectangle color scheme consists of four colors that form a rectangle on the color wheel.



42.6531, 41.2192, 39.4263



39.8298, 41.2192, 34.6973



35.8962, 41.2192, 50.8163



38.5326, 41.2192, 56.8839

Sweetspot

The Sweet Spot groups the original color and five complimentary colors.



42.6542, 41.2211, 39.4272



89.5676, 92.2119, 97.2794



45.0802, 41.0541, 55.7088



19.0121, 19.5109, 20.4855



0.0000, 0.0000, 0.0000



20.3446, 21.4041, 23.3091

Same Dimension

The Same Dimension uses a secret algorithm to generate beautiful new colors.



42.6542, 41.2211, 39.4272



74.2881, 70.4032, 65.2101



45.9264, 47.7654, 40.5179



10.1639, 10.2593, 10.5064



14.8499, 7.9857, 0.7587



0.6732, 0.4081, 0.0433

Inverse Universe

The Inverse Universe completely reimagines the original color for something new.



43.5111, 49.2608, 59.4399



76.0955, 87.3739, 107.4619



39.9923, 42.2231, 58.2670



10.2670, 11.2253, 12.9104



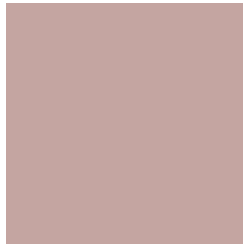
16.1160, 21.9886, 36.9514



0.7248, 1.0070, 1.6061

Previews

White Background



This preview shows how the XYZ color 42.6531, 41.2192, 39.4263 looks on a white background.

Color Contrast Check

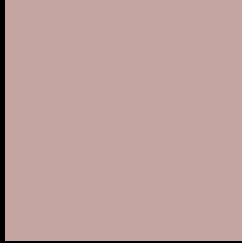
Large Text (above 18pt) WCAG AA × Fail

Any Text WCAG AA × Fail

Large Text (above 18pt) WCAG AAA × Fail

Any Text WCAG AAA × Fail

Black Background



This preview shows how the XYZ color 42.6531, 41.2192, 39.4263 looks on a black background.

Color Contrast Check

Large Text (above 18pt) WCAG AA ✓ Pass

Any Text WCAG AA ✓ Pass

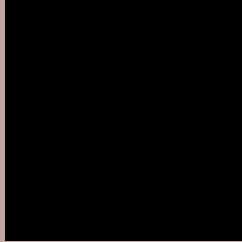
Large Text (above 18pt) WCAG AAA ✓ Pass

Any Text WCAG AAA ✓ Pass

If you want to check with other color combinations, try the [Color Contrast Checker](#).

XYZ 42.6531, 41.2192, 39.4263

Background



This preview shows how black text looks on a background with the XYZ color 42.6531, 41.2192, 39.4263.



This preview shows how white text looks on a background with the XYZ color 42.6531, 41.2192,

39.4263.

Color Blindness Simulation

Color vision deficiency is a very complex topic, and I could not describe the different causes any better than Wikipedia does, so if you want to learn more, you should check out their [article about color blindness](#).

Dichromacy



Original Color

42.6531, 41.2192, 39.4263

Protanopia

39.4859, 41.1895, 41.4666

Deuteranopia

42.0616, 41.1831, 39.4505



Tritanopia

44.1238, 41.2953, 46.2027

Trichromacy



Original Color

42.6531, 41.2192, 39.4263

Protanomaly

40.6560, 41.2466, 40.9406

Deuteranomaly

42.3174, 41.3150, 39.4624

Tritanomaly

43.5571, 41.3235, 43.7107

Monochromacy



Original Color

42.6531, 41.2192, 39.4263

Achromatopsia

40.2316, 42.3268, 46.0938

Achromatomaly

41.0157, 41.9355, 43.4687

CSS Examples

Text

The CSS property to change the color of the text to XYZ 42.6531, 41.2192, 39.4263 is called "color". The color property can be set on classes, ids or directly on the HTML element.

This example shows how text in the color `rgb(196, 165, 161)` looks like.

```
.text, #text, p{  
    color:rgb(196, 165, 161)  
}
```

If you want to add a text shadow in that color use the text-shadow property, you can generate a text shadow directly with our [CSS Text Shadow Generator](#).

Here you see how black text with a 4 pixel rgb(196, 165, 161) colored shadow looks like.

```
.shadow{ text-shadow: 4px 4px 2px rgb(196, 165, 161) }
```

Border

The CSS property to change the border of an element to XYZ 42.6531, 41.2192, 39.4263 is called "border". The border property can be set on classes, ids or directly on the HTML element.

This example shows the color as border, it can be applied via the CSS property "border" or "border-color".

```
.border, #border, table{ border:4px solid rgb(196, 165, 161) }
```


If only the border color should be changed use the property `border-color`.

```
.border{ border-color:rgb(196, 165, 161) }
```

If you want to add a box shadow in that color use:

Here you see how a box with a 4 pixel `rgb(196, 165, 161)` colored shadow looks like.

```
.boxshadow{ -moz-box-shadow:4px 4px 4px  
4px rgb(196, 165, 161); -webkit-box-  
shadow:4px 4px 4px 4px rgb(196, 165, 161);  
box-shadow:4px 4px 4px 4px rgb(196, 165,  
161) }
```

Background

The CSS property to change the background color of an element to XYZ 42.6531, 41.2192, 39.4263 is called "background". The background property can be set on classes, ids or directly on the HTML element.

```
.background, #background, body{  
background: rgb(196, 165, 161) }
```

If only the background color should be changed can be used:

```
.background{ background-color: rgb(196,  
165, 161) }
```

This example shows the color as background, it is applied via the CSS property "background".

To optimize and compress your CSS code, you can use our [online CSS compressor and optimizer](#) based on csstidy. If you want to create a linear or radial gradient as background or border, check our [CSS Gradient Generator](#).

Hey! You found this booklet interesting? Support Converting Colors with the new Membership Option!

The pro membership hides all ads, plus gives you double the colors in the color bucket, and more awesome pro features!

[Learn more, Memberships starting at \\$2.50/m!](#)

**Follow me
on Twitter!**

@ConvertingColor