

Converting Colors

XYZ(42.6738, 37.4799, 33.0148)

Have a look what the booklet for
XYZ(42.6738, 37.4799, 33.0148)
contains.

XYZ(42.8300, 37.6524, 33.0272)	3
<i>Conversions</i>	4
<i>Details</i>	6
<i>Harmonies</i>	12
<i>Previews</i>	24
<i>Color Blindness Simulation</i>	28
<i>CSS Examples</i>	31

Color

**XYZ(42.8300, 37.6524,
33.0272)**

Conversions

Conversions Part 1

Format	Color
Hex	D29694
RGB	210, 150, 148
RGB Percent	82%, 59%, 58%
CMY	0.1765, 0.4117, 0.4196
CMYK	0.00, 0.29, 0.30, 0.18
HSL	2°, 41%, 70%
HSV	2°, 30%, 82%
XYZ	42.8300, 37.6524, 33.0272
YIQ	167.7120, 36.4020, 12.0980

Conversions

Conversions Part 2

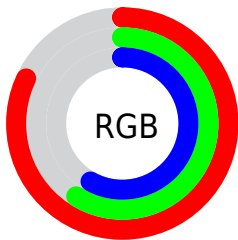
Format	Color
R _Y B	210, 150, 148
Decimal	13801108
CIE Lab	67.76, 22.28, 10.04
CIE LCh	68, 24.438, 24.258
Yxy	37.6524, 0.3773, 0.3317
Android (android.graphics.Color)	4291991188 (0xFFD29694)
YUV	167.7120, -9.7180, 37.0866
Hunter-Lab	61.3616, 17.2092, 11.0409

Details

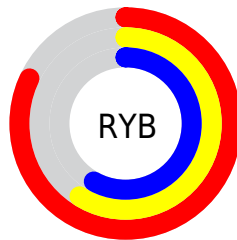
The XYZ color **42.8300, 37.6524, 33.0272** is a light color, and the websafe version is hex **CC9999**. A complement of this color would be **46.4008, 56.0591, 69.3480**, and the grayscale version is **37.1127, 39.0454, 42.5205**.

A 20% lighter version of the original color is **73.7320, 69.1869, 65.3454**, and **19.9459, 16.6568, 13.4731** is the 20% darker color. If you saturate the color by 10%, you get **38.3499, 31.1153, 24.0636**, and if you desaturate by 10%, it is **48.1760, 45.4383, 43.7680**.

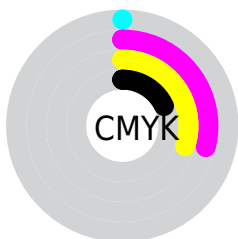
Distribution



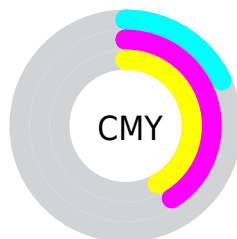
- Red (82%)
- Green (59%)
- Blue (58%)



- Red (82%)
- Yellow (59%)
- Blue (58%)



- Cyan (0%)
- Magenta (29%)
- Yellow (30%)
- Black (18%)



- Cyan (18%)
- Magenta (41%)
- Yellow (42%)

Brightness & Saturation Gradients

These gradients show how the XYZ color 42.8300, 37.6524, 33.0272 changes by changing the brightness by 10 percent. The first figure shows a shift by +10% for each color and the second figure -10%.

Similar to the brightness gradients but the following saturation gradients show a change of the XYZ color 42.8300, 37.6524, 33.0272 by changing the saturation by 10% instead.

■ 42.8300, 37.6524,
33.0272

■ 42.8300, 37.6524,
33.0272

348.8456,
336.1265, 330.4080

■ 29.9457, 25.7130,
21.8760

■ 78.7116, 71.5750,
65.5345

■ 19.9452, 16.6091,
13.5684

■ 102.4396, 94.3271,
87.7277

■ 12.4633, 9.9562,
7.6858

130.5128,
121.4522, 114.4386

■ 7.1345, 5.3699,
3.8097

163.2967,
153.3346, 146.0858

■ 3.5934, 2.4659,
1.5215

201.1565,
190.3589, 183.0877

■ 1.4748, 0.8595,
0.2339

244.4577,

■ 0.3086, 0.0000,

232.9094, 225.8631

0.0000

293.5656,
281.3704, 274.8304

0.0000, 0.0000,
0.0000

42.8300, 37.6524,
33.0272

42.8300, 37.6524,
33.0272

38.3499, 31.1153,
24.0636

48.1760, 45.4383,
43.7680

34.6874, 25.7571,
16.7793

54.4269, 54.5275,
56.3721

31.7940, 21.5092,
11.0705

61.6230, 64.9780,
70.9229

29.6149, 18.2938,
6.8208

69.8013, 76.8423,
87.4980

28.0879, 16.0228,
3.8979

78.9968, 90.1706,
106.1707

■ 27.1404, 14.5938,
2.1455

■ 80.3885, 92.4417,
108.2139

■ 26.6681, 13.8723,
1.3008

■ 26.6521, 13.8491,
1.2684

Harmonies

Analogous

The Analogous color harmony consists of three colors that are next to each other on the color wheel.



43.5158, 37.6524, 43.1147



42.8300, 37.6524, 33.0272



40.2024, 37.6524, 26.3188

Triad

The Triadic color harmony groups three colors that are evenly spaced from another and form a triangle on the color wheel.



42.8300, 37.6524, 33.0272



30.2073, 37.6524, 30.0022



35.0654, 37.6524, 65.3866

Complementary

The Complementary color scheme is a pair of colors which are on the opposite of each other on the color wheel.



42.8300, 37.6524, 33.0272



46.4008, 56.0591, 69.3480

Split Complementary

Split-complementary colors differ from the complementary color scheme. The scheme consists of three colors, the original color and two neighbors of the complement color.



31.7082, 37.6524, 60.3154



42.8300, 37.6524, 33.0272



29.0330, 37.6524, 38.9500

Square

The Square scheme is like the rectangle color scheme, but the four colors are evenly spaced on the color wheel.



42.8300, 37.6524, 33.0272



32.8841, 37.6524, 24.7995



29.5626, 37.6524, 50.1558



38.8569, 37.6524, 63.0491

Rectangle

The Rectangle color scheme consists of four colors that form a rectangle on the color wheel.



42.8300, 37.6524, 33.0272



37.7954, 37.6524, 24.0511



29.5626, 37.6524, 50.1558



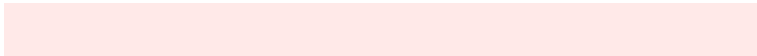
33.8519, 37.6524, 64.4680

Sweetspot

The Sweet Spot groups the original color and five complimentary colors.



42.8310, 37.6542, 33.0280



84.8926, 85.2491, 88.3616



48.6731, 39.4837, 65.3560



17.8437, 17.7720, 18.2532



0.0000, 0.0000, 0.0000



20.3446, 21.4041, 23.3091

Same Dimension

The Same Dimension uses a secret algorithm to generate beautiful new colors.



42.8310, 37.6542, 33.0280



62.2202, 52.2443, 42.7611



48.2520, 48.4961, 34.8349



11.8389, 11.8686, 12.2789



16.2714, 8.4759, 0.7784



0.9208, 0.4959, 0.0472

Inverse Universe

The Inverse Universe completely reimagines the original color for something new.



46.4008, 56.0591, 69.3480



68.5701, 84.9931, 107.3990



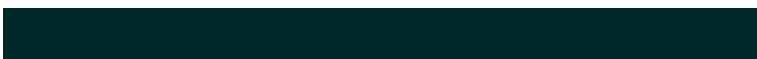
39.7598, 42.7770, 67.1343



12.1243, 13.3388, 15.1793



20.1682, 28.9830, 41.7238



1.1382, 1.6415, 2.3364

Previews

White Background



This preview shows how the XYZ color 42.8300, 37.6524, 33.0272 looks on a white background.

Color Contrast Check

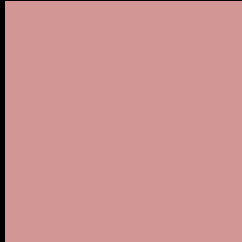
Large Text (above 18pt) WCAG AA × Fail

Any Text WCAG AA × Fail

Large Text (above 18pt) WCAG AAA × Fail

Any Text WCAG AAA × Fail

Black Background



This preview shows how the XYZ color 42.8300, 37.6524, 33.0272 looks on a black background.

Color Contrast Check

Large Text (above 18pt) WCAG AA ✓ Pass

Any Text WCAG AA ✓ Pass

Large Text (above 18pt) WCAG AAA ✓ Pass

Any Text WCAG AAA ✓ Pass

If you want to check with other color combinations, try the [Color Contrast Checker](#).

XYZ 42.8300, 37.6524, 33.0272

Background



This preview shows how black text looks on a background with the XYZ color 42.8300, 37.6524, 33.0272.



This preview shows how white text looks on a background with the XYZ color 42.8300, 37.6524,

Color Blindness Simulation

Color vision deficiency is a very complex topic, and I could not describe the different causes any better than Wikipedia does, so if you want to learn more, you should check out their [article about color blindness](#).

Dichromacy



Original Color

42.8300, 37.6524, 33.0272

Protanopia

36.2505, 37.9685, 36.8705

Deuteranopia

38.3255, 37.5630, 32.4245



Tritanopia

43.7990, 37.5668, 38.2004

Trichromacy



Original Color

42.8300, 37.6524, 33.0272

Protanomaly

38.3282, 37.7558, 35.4045

Deuteranomaly

39.9199, 37.6193, 32.7610

Tritanomaly

43.6122, 37.7441, 36.4392

Monochromacy



Original Color

42.8300, 37.6524, 33.0272

Achromatopsia

37.2190, 39.1572, 42.6422

Achromatomaly

38.7063, 38.1302, 39.0380

CSS Examples

Text

The CSS property to change the color of the text to XYZ 42.8300, 37.6524, 33.0272 is called "color". The color property can be set on classes, ids or directly on the HTML element.

This example shows how text in the color `rgb(210, 150, 148)` looks like.

```
.text, #text, p{  
    color:rgb(210, 150, 148)  
}
```

If you want to add a text shadow in that color use the text-shadow property, you can generate a text shadow directly with our [CSS Text Shadow Generator](#).

Here you see how black text with a 4 pixel rgb(210, 150, 148) colored shadow looks like.

```
.shadow{ text-shadow: 4px 4px 2px rgb(210, 150, 148) }
```

Border

The CSS property to change the border of an element to XYZ 42.8300, 37.6524, 33.0272 is called "border". The border property can be set on classes, ids or directly on the HTML element.

This example shows the color as border, it can be applied via the CSS property "border" or "border-color".

```
.border, #border, table{ border:4px solid rgb(210, 150, 148) }
```


If only the border color should be changed use the property `border-color`.

```
.border{ border-color:rgb(210, 150, 148) }
```

If you want to add a box shadow in that color use:

Here you see how a box with a 4 pixel `rgb(210, 150, 148)` colored shadow looks like.

```
.boxshadow{ -moz-box-shadow:4px 4px 4px  
4px rgb(210, 150, 148); -webkit-box-  
shadow:4px 4px 4px 4px rgb(210, 150, 148);  
box-shadow:4px 4px 4px 4px rgb(210, 150,  
148) }
```

Background

The CSS property to change the background color of an element to XYZ 42.8300, 37.6524, 33.0272 is called "background". The background property can be set on classes, ids or directly on the HTML element.

```
.background, #background, body{  
background: rgb(210, 150, 148) }
```

If only the background color should be changed can be used:

```
.background{ background-color: rgb(210,  
150, 148) }
```

This example shows the color as background, it is applied via the CSS property "background".

To optimize and compress your CSS code, you can use our [online CSS compressor and optimizer](#) based on csstidy. If you want to create a linear or radial gradient as background or border, check our [CSS Gradient Generator](#).

Hey! You found this booklet interesting? Support Converting Colors with the new Membership Option!

The pro membership hides all ads, plus gives you double the colors in the color bucket, and more awesome pro features!

[Learn more, Memberships starting at \\$2.50/m!](#)

**Follow me
on Twitter!**

@ConvertingColor