

Converting Colors

XYZ(42.6872, 39.9231, 41.2048)

Have a look what the booklet for
XYZ(42.6872, 39.9231, 41.2048)
contains.

XYZ(42.6510, 39.8640, 41.0439)	3
<i>Conversions</i>	4
<i>Details</i>	6
<i>Harmonies</i>	12
<i>Previews</i>	24
<i>Color Blindness Simulation</i>	28
<i>CSS Examples</i>	31

Color

**XYZ(42.6510, 39.8640,
41.0439)**

Conversions

Conversions Part 1

Format	Color
Hex	C6A0A5
RGB	198, 160, 165
RGB Percent	78%, 63%, 65%
CMY	0.2235, 0.3725, 0.3529
CMYK	0.00, 0.19, 0.17, 0.22
HSL	352°, 25%, 70%
HSV	352°, 19%, 78%
XYZ	42.6510, 39.8640, 41.0439
YIQ	171.9320, 21.0430, 9.6110

Conversions

Conversions Part 2

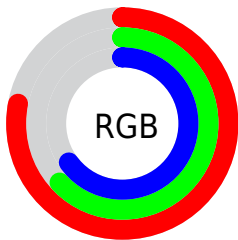
Format	Color
R _Y B	198, 160, 165
Decimal	13017253
CIE Lab	69.37, 14.81, 2.72
CIE LCh	69, 15.058, 10.403
Yxy	39.8640, 0.3452, 0.3226
Android (android.graphics.Color)	4291207333 (0xFFC6A0A5)
YUV	171.9320, -3.4175, 22.8616
Hunter-Lab	63.1379, 10.0891, 5.6541

Details

The XYZ color **42.6510, 39.8640, 41.0439** is a light color, and the websafe version is hex **CC9999**. A complement of this color would be **44.3185, 51.7129, 58.1003**, and the grayscale version is **39.1885, 41.2293, 44.8988**.

A 20% lighter version of the original color is **78.4587, 75.0282, 78.0568**, and **19.8448, 17.8467, 18.0216** is the 20% darker color. If you saturate the color by 10%, you get **38.0267, 32.9539, 32.2925**, and if you desaturate by 10%, it is **48.0347, 47.9552, 51.0877**.

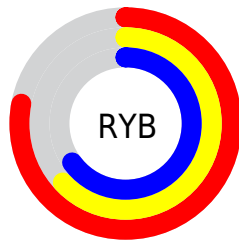
Distribution



Red (78%)

Green (63%)

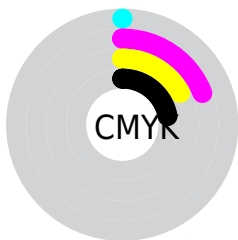
Blue (65%)



Red (78%)

Yellow (63%)

Blue (65%)

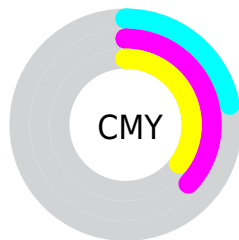


Cyan (0%)

Magenta (19%)

Yellow (17%)

Black (22%)



Cyan (22%)


Magenta (37%)


Yellow (35%)

Brightness & Saturation Gradients


These gradients show how the XYZ color 42.6510, 39.8640, 41.0439 changes by changing the brightness by 10 percent. The first figure shows a shift by +10% for each color and the second figure -10%.


Similar to the brightness gradients but the following saturation gradients show a change of the XYZ color 42.6510, 39.8640, 41.0439 by changing the saturation by 10% instead.


 42.6510, 39.8640,
41.0439


 42.6510, 39.8640,
41.0439


348.1204,
345.5500, 366.1861

 29.8047, 27.4325,
28.0334


 78.4429, 74.9564,
78.0049

 19.8377, 17.8983,
18.1116


 102.1193, 98.3861,
102.7926

 12.3847, 10.8770,
10.8599


130.1364,
126.2506, 132.3430

 7.0803, 5.9842,
5.8597

162.8596,
158.9344, 167.0748

 3.5592, 2.8355,
2.6926

200.6542,
196.8218, 207.4064

 1.4559, 1.0465,
0.9397

243.8857,

 0.2955, 0.0000,

240.2973, 253.7565

0.0000

292.9193,
289.7453, 306.5436

0.0000, 0.0000,
0.0000

42.6510, 39.8640,
41.0439

42.6510, 39.8640,
41.0439

38.0267, 32.9539,
32.2925

48.0347, 47.9552,
51.0877

34.1243, 27.1644,
24.7785

54.2063, 57.2735,
62.4709

30.9081, 22.4382,
18.4466

61.1973, 67.8689,
75.2413

28.3380, 18.7102,
13.2363

69.0361, 79.7873,
89.4434

26.3698, 15.9086,
9.0816

76.4588, 90.4898,
104.6895

■ 24.9535, 13.9517,
5.9097

■ 77.0988, 90.7458,
108.0599

■ 24.0310, 12.7437,
3.6383

■ 23.5091, 12.1218,
2.1638

■ 23.4757, 12.0806,
2.0739

Harmonies

Analogous

The Analogous color harmony consists of three colors that are next to each other on the color wheel.



42.4425, 39.8640, 48.0281



42.6510, 39.8640, 41.0439



41.5431, 39.8640, 35.3308

Triad

The Triadic color harmony groups three colors that are evenly spaced from another and form a triangle on the color wheel.



42.6510, 39.8640, 41.0439



34.9540, 39.8640, 34.0308



36.3508, 39.8640, 57.2028

Complementary

The Complementary color scheme is a pair of colors which are on the opposite of each other on the color wheel.



42.6510, 39.8640, 41.0439



44.3185, 51.7129, 58.1003

Split Complementary

Split-complementary colors differ from the complementary color scheme. The scheme consists of three colors, the original color and two neighbors of the complement color.



34.4568, 39.8640, 52.6244



42.6510, 39.8640, 41.0439



33.6744, 39.8640, 39.0887

Square

The Square scheme is like the rectangle color scheme, but the four colors are evenly spaced on the color wheel.



42.6510, 39.8640, 41.0439



37.0558, 39.8640, 31.5771



33.4963, 39.8640, 45.8552



38.7356, 39.8640, 57.8697

Rectangle

The Rectangle color scheme consists of four colors that form a rectangle on the color wheel.



42.6510, 39.8640, 41.0439



40.2336, 39.8640, 32.8220



33.4963, 39.8640, 45.8552



35.6384, 39.8640, 56.0489

Sweetspot

The Sweet Spot groups the original color and five complimentary colors.



42.6521, 39.8658, 41.0447



88.2956, 89.7972, 96.4566



44.7403, 40.5494, 58.8951



18.7483, 18.9932, 20.3673



0.0000, 0.0000, 0.0000



20.3446, 21.4041, 23.3091

Same Dimension

The Same Dimension uses a secret algorithm to generate beautiful new colors.



42.6521, 39.8658, 41.0447



71.9655, 65.2606, 65.9694



44.7582, 44.7917, 39.5466



10.6897, 10.6593, 11.3493



15.2849, 7.8635, 1.4442



0.7428, 0.3800, 0.1690

Inverse Universe

The Inverse Universe completely reimagines the original color for something new.



42.6521, 39.8658, 41.0447



71.9655, 65.2606, 65.9694



41.8461, 45.8609, 60.0728



10.6897, 10.6593, 11.3493



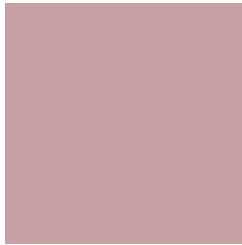
15.2849, 7.8635, 1.4442



0.7428, 0.3800, 0.1690

Previews

White Background



This preview shows how the XYZ color 42.6510, 39.8640, 41.0439 looks on a white background.

Color Contrast Check

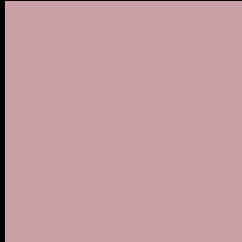
Large Text (above 18pt) WCAG AA × Fail

Any Text WCAG AA × Fail

Large Text (above 18pt) WCAG AAA × Fail

Any Text WCAG AAA × Fail

Black Background



This preview shows how the XYZ color 42.6510, 39.8640, 41.0439 looks on a black background.

Color Contrast Check

Large Text (above 18pt) WCAG AA ✓ Pass

Any Text WCAG AA ✓ Pass

Large Text (above 18pt) WCAG AAA ✓ Pass

Any Text WCAG AAA ✓ Pass

If you want to check with other color combinations, try the [Color Contrast Checker](#).

XYZ 42.6510, 39.8640, 41.0439

Background



This preview shows how black text looks on a background with the XYZ color 42.6510, 39.8640, 41.0439.



This preview shows how white text looks on a background with the XYZ color 42.6510, 39.8640,

Color Blindness Simulation

Color vision deficiency is a very complex topic, and I could not describe the different causes any better than Wikipedia does, so if you want to learn more, you should check out their [article about color blindness](#).

Dichromacy



Original Color

42.6510, 39.8640, 41.0439

Protanopia

38.4569, 40.0489, 43.7335

Deuteranopia

40.7153, 39.9226, 40.6819



Tritanopia

43.3020, 39.8787, 43.9432

Trichromacy



Original Color

42.6510, 39.8640, 41.0439

Protanomaly

39.7602, 39.9233, 42.6562

Deuteranomaly

41.5363, 40.0812, 40.6692

Tritanomaly

43.1128, 39.8030, 42.9466

Monochromacy



Original Color

42.6510, 39.8640, 41.0439

Achromatopsia

39.2122, 41.2543, 44.9259

Achromatomaly

40.2201, 40.6936, 43.2709

CSS Examples

Text

The CSS property to change the color of the text to XYZ 42.6510, 39.8640, 41.0439 is called "color". The color property can be set on classes, ids or directly on the HTML element.

This example shows how text in the color `rgb(198, 160, 165)` looks like.

```
.text, #text, p{  
    color:rgb(198, 160, 165)  
}
```

If you want to add a text shadow in that color use the text-shadow property, you can generate a text shadow directly with our [CSS Text Shadow Generator](#).

Here you see how black text with a 4 pixel rgb(198, 160, 165) colored shadow looks like.

```
.shadow{ text-shadow: 4px 4px 2px rgb(198, 160, 165) }
```

Border

The CSS property to change the border of an element to XYZ 42.6510, 39.8640, 41.0439 is called "border". The border property can be set on classes, ids or directly on the HTML element.

This example shows the color as border, it can be applied via the CSS property "border" or "border-color".

```
.border, #border, table{ border:4px solid rgb(198, 160, 165) }
```


If only the border color should be changed use the property `border-color`.

```
.border{ border-color:rgb(198, 160, 165) }
```

If you want to add a box shadow in that color use:

Here you see how a box with a 4 pixel `rgb(198, 160, 165)` colored shadow looks like.

```
.boxshadow{ -moz-box-shadow:4px 4px 4px  
4px rgb(198, 160, 165); -webkit-box-  
shadow:4px 4px 4px 4px rgb(198, 160, 165);  
box-shadow:4px 4px 4px 4px rgb(198, 160,  
165) }
```

Background

The CSS property to change the background color of an element to XYZ 42.6510, 39.8640, 41.0439 is called "background". The background property can be set on classes, ids or directly on the HTML element.

```
.background, #background, body{  
background: rgb(198, 160, 165) }
```

If only the background color should be changed can be used:

```
.background{ background-color: rgb(198,  
160, 165) }
```

This example shows the color as background, it is applied via the CSS property "background".

To optimize and compress your CSS code, you can use our [online CSS compressor and optimizer](#) based on csstidy. If you want to create a linear or radial gradient as background or border, check our [CSS Gradient Generator](#).

Hey! You found this booklet interesting? Support Converting Colors with the new Membership Option!

The pro membership hides all ads, plus gives you double the colors in the color bucket, and more awesome pro features!

[Learn more, Memberships starting at \\$2.50/m!](#)

**Follow me
on Twitter!**

@ConvertingColor