

Converting Colors

XYZ(42.7282, 44.2219, 49.8028)

Have a look what the booklet for
XYZ(42.7282, 44.2219, 49.8028)
contains.

XYZ(42.6882, 44.0902, 49.9764)	3
<i>Conversions</i>	4
<i>Details</i>	6
<i>Harmonies</i>	12
<i>Previews</i>	24
<i>Color Blindness Simulation</i>	28
<i>CSS Examples</i>	31

Color

**XYZ(42.6882, 44.0902,
49.9764)**

Conversions

Conversions Part 1

Format	Color
Hex	B4B0B5
RGB	180, 176, 181
RGB Percent	71%, 69%, 71%
CMY	0.2941, 0.3098, 0.2902
CMYK	0.01, 0.03, 0.00, 0.29
HSL	288°, 3%, 70%
HSV	288°, 3%, 71%
XYZ	42.6882, 44.0902, 49.9764
YIQ	177.7660, 0.7790, 2.4030

Conversions

Conversions Part 2

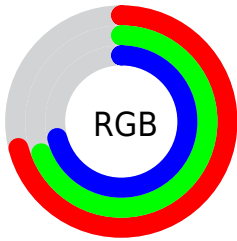
Format	Color
RYB	180, 176, 181
Decimal	11841717
CIELab	72.29, 2.35, -2.05
CIELCh	72, 3.123, 318.868
Yxy	44.0902, 0.3122, 0.3224
Android (android.graphics.Color)	4290031797 (0xFFB4B0B5)
YUV	177.7660, 1.5944, 1.9592
Hunter-Lab	66.4005, -1.4449, 1.8556

Details

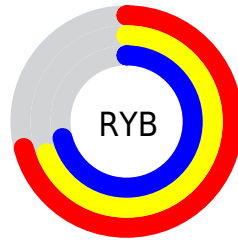
The XYZ color **42.6882, 44.0902, 49.9764** is a light color, and the websafe version is hex **999999**. A complement of this color would be **42.4936, 45.5307, 47.6253**, and the grayscale version is **42.1859, 44.3829, 48.3329**.

A 20% lighter version of the original color is **78.7347, 81.6605, 91.7331**, and **19.8563, 20.4858, 23.3297** is the 20% darker color. If you saturate the color by 10%, you get **38.5413, 37.0316, 48.8332**, and if you desaturate by 10%, it is **47.3329, 52.1104, 51.2803**.

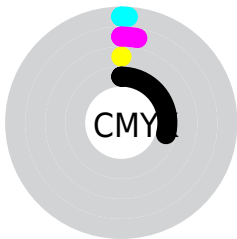
Distribution



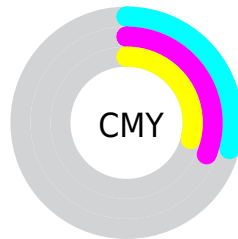
- Red (71%)
- Green (69%)
- Blue (71%)



- Red (71%)
- Yellow (69%)
- Blue (71%)



- Cyan (1%)
- Magenta (3%)
- Yellow (0%)
- Black (29%)



- Cyan (29%)
- Magenta (31%)
- Yellow (29%)

Brightness & Saturation Gradients

These gradients show how the XYZ color 42.6882, 44.0902, 49.9764 changes by changing the brightness by 10 percent. The first figure shows a shift by +10% for each color and the second figure -10%.

Similar to the brightness gradients but the following saturation gradients show a change of the XYZ color 42.6882, 44.0902, 49.9764 by changing the saturation by 10% instead.

■ 42.6882, 44.0902,
49.9764

■ 42.6882, 44.0902,
49.9764

348.2712,
363.0762, 403.3061

■ 29.8340, 30.7414,
35.0236

■ 78.4988, 81.3535,
91.5359

■ 19.8601, 20.4020,
23.3974

102.1859,
106.0367, 118.9796

■ 12.4010, 12.6876,
14.6791

130.2147,
135.2670, 151.4240

■ 7.0916, 7.2138,
8.4504

162.9505,
169.4285, 189.2878

■ 3.5663, 3.5962,
4.2926

200.7587,
208.9059, 232.9893

■ 1.4598, 1.4503,
1.7872

244.0046,

■ 0.2982, 0.2534,

254.0833, 282.9471

0.4195

293.0537,
305.3453, 339.5799

■ 0.0000, 0.0000,
0.0000

■ 42.6882, 44.0902,
49.9764

■ 42.6882, 44.0902,
49.9764

■ 38.5413, 37.0316,
48.8332

■ 47.3329, 52.1104,
51.2803

■ 34.8696, 30.8916,
47.8416

■ 52.4893, 61.1216,
52.7479

■ 31.6544, 25.6324,
46.9959

■ 58.1755, 71.1592,
54.3856

■ 28.8743, 21.2114,
46.2891

■ 64.4075, 82.2550,
56.1989

■ 26.5061, 17.5823,
45.7134

■ 67.4199, 86.8778,
56.9324

■ 24.5242, 14.6945,
45.2605

■ 68.3872, 87.3764,
56.9777

■ 22.9003, 12.4914,
44.9208

■ 69.3774, 87.8869,
57.0240

■ 21.6016, 10.9078,
44.6836

■ 70.3908, 88.4094,
57.0714

■ 20.5893, 9.8663,
44.5359

■ 71.4276, 88.9438,
57.1200

Harmonies

Analogous

The Analogous color harmony consists of three colors that are next to each other on the color wheel.



42.2409, 44.0902, 50.8569



42.6882, 44.0902, 49.9764



42.9267, 44.0902, 48.5794

Triad

The Triadic color harmony groups three colors that are evenly spaced from another and form a triangle on the color wheel.



42.6882, 44.0902, 49.9764



42.1059, 44.0902, 45.1659



40.9378, 44.0902, 48.9685

Complementary

The Complementary color scheme is a pair of colors which are on the opposite of each other on the color wheel.



42.6882, 44.0902, 49.9764



42.4936, 45.5307, 47.6253

Split Complementary

Split-complementary colors differ from the complementary color scheme. The scheme consists of three colors, the original color and two neighbors of the complement color.



40.9024, 44.0902, 47.4386



42.6882, 44.0902, 49.9764



41.5737, 44.0902, 45.2651

Square

The Square scheme is like the rectangle color scheme, but the four colors are evenly spaced on the color wheel.



42.6882, 44.0902, 49.9764



42.5886, 44.0902, 45.8157



41.1342, 44.0902, 46.0895



41.2315, 44.0902, 50.2665

Rectangle

The Rectangle color scheme consists of four colors that form a rectangle on the color wheel.



42.6882, 44.0902, 49.9764



42.9339, 44.0902, 47.5527



41.1342, 44.0902, 46.0895



40.8954, 44.0902, 48.4636

Sweetspot

The Sweet Spot groups the original color and five complimentary colors.



42.6895, 44.0921, 49.9774



77.8403, 81.3459, 89.8933



41.9855, 44.0456, 50.0055



16.8335, 17.5979, 19.4318



86.6293, 91.1408, 99.2523



17.0014, 17.8868, 19.4787

Same Dimension

The Same Dimension uses a secret algorithm to generate beautiful new colors.



42.6895, 44.0921, 49.9774



76.2275, 78.5770, 89.4439



42.7786, 44.1547, 49.2270



9.1914, 9.4310, 10.8423



13.8290, 6.4649, 30.6560



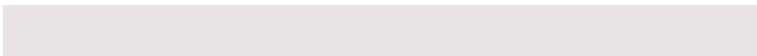
0.4775, 0.2253, 0.9666

Inverse Universe

The Inverse Universe completely reimagines the original color for something new.



42.5188, 44.0508, 47.8591



75.8908, 78.4958, 85.2587



42.4074, 45.4700, 48.3564



9.1418, 9.4191, 10.2239



13.3793, 6.8693, 1.8913



0.4413, 0.2243, 0.1666

Previews

White Background



This preview shows how the XYZ color 42.6882, 44.0902, 49.9764 looks on a white background.

Color Contrast Check

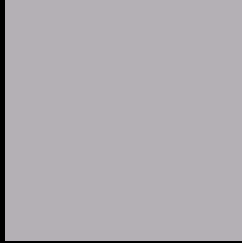
Large Text (above 18pt) WCAG AA × Fail

Any Text WCAG AA × Fail

Large Text (above 18pt) WCAG AAA × Fail

Any Text WCAG AAA × Fail

Black Background



This preview shows how the XYZ color 42.6882, 44.0902, 49.9764 looks on a black background.

Color Contrast Check

Large Text (above 18pt) WCAG AA ✓ Pass

Any Text WCAG AA ✓ Pass

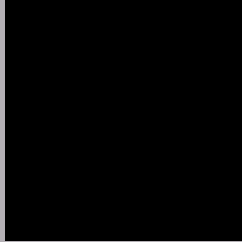
Large Text (above 18pt) WCAG AAA ✓ Pass

Any Text WCAG AAA ✓ Pass

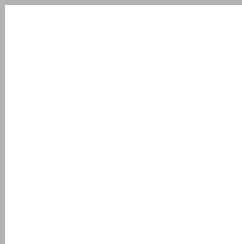
If you want to check with other color combinations, try the [Color Contrast Checker](#).

XYZ 42.6882, 44.0902, 49.9764

Background



This preview shows how black text looks on a background with the XYZ color 42.6882, 44.0902, 49.9764.



This preview shows how white text looks on a background with the XYZ color 42.6882, 44.0902,

Color Blindness Simulation

Color vision deficiency is a very complex topic, and I could not describe the different causes any better than Wikipedia does, so if you want to learn more, you should check out their [article about color blindness](#).

Dichromacy



Original Color

42.6882, 44.0902, 49.9764

Protanopia

42.4562, 43.9706, 49.9655

Deuteranopia

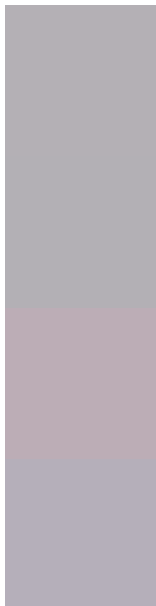
44.9342, 44.0889, 50.3977



Tritanopia

43.5713, 44.1578, 54.3710

Trichromacy



Original Color

42.6882, 44.0902, 49.9764

Protanomaly

42.4562, 43.9706, 49.9655

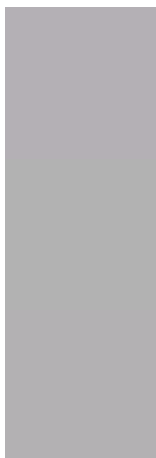
Deuteranomaly

44.1261, 43.9559, 50.4146

Tritanomaly

43.2490, 44.0289, 52.6733

Monochromacy



Original Color

42.6882, 44.0902, 49.9764

Achromatopsia

42.3164, 44.5201, 48.4824

Achromatomaly

42.4492, 44.2827, 48.9579

CSS Examples

Text

The CSS property to change the color of the text to XYZ 42.6882, 44.0902, 49.9764 is called "color". The color property can be set on classes, ids or directly on the HTML element.

This example shows how text in the color `rgb(180, 176, 181)` looks like.

```
.text, #text, p{  
    color:rgb(180, 176, 181)  
}
```

If you want to add a text shadow in that color use the text-shadow property, you can generate a text shadow directly with our [CSS Text Shadow Generator](#).

Here you see how black text with a 4 pixel rgb(180, 176, 181) colored shadow looks like.

```
.shadow{ text-shadow: 4px 4px 2px rgb(180, 176, 181) }
```

Border

The CSS property to change the border of an element to XYZ 42.6882, 44.0902, 49.9764 is called "border". The border property can be set on classes, ids or directly on the HTML element.

This example shows the color as border, it can be applied via the CSS property "border" or "border-color".

```
.border, #border, table{ border:4px solid rgb(180, 176, 181) }
```


If only the border color should be changed use the property `border-color`.

```
.border{ border-color:rgb(180, 176, 181) }
```

If you want to add a box shadow in that color use:

Here you see how a box with a 4 pixel `rgb(180, 176, 181)` colored shadow looks like.

```
.boxshadow{ -moz-box-shadow:4px 4px 4px  
4px rgb(180, 176, 181); -webkit-box-  
shadow:4px 4px 4px 4px rgb(180, 176, 181);  
box-shadow:4px 4px 4px 4px rgb(180, 176,  
181) }
```

Background

The CSS property to change the background color of an element to XYZ 42.6882, 44.0902, 49.9764 is called "background". The background property can be set on classes, ids or directly on the HTML element.

```
.background, #background, body{  
background: rgb(180, 176, 181) }
```

If only the background color should be changed can be used:

```
.background{ background-color: rgb(180,  
176, 181) }
```

This example shows the color as background, it is applied via the CSS property "background".

To optimize and compress your CSS code, you can use our [online CSS compressor and optimizer](#) based on csstidy. If you want to create a linear or radial gradient as background or border, check our [CSS Gradient Generator](#).

Hey! You found this booklet interesting? Support Converting Colors with the new Membership Option!

The pro membership hides all ads, plus gives you double the colors in the color bucket, and more awesome pro features!

[Learn more, Memberships starting at \\$2.50/m!](#)

**Follow me
on Twitter!**

@ConvertingColor