

Converting Colors

XYZ(42.7512, 42.8187, 44.8082)

Have a look what the booklet for
XYZ(42.7512, 42.8187, 44.8082)
contains.

XYZ(42.7483, 42.7957, 45.0370)	3
<i>Conversions</i>	4
<i>Details</i>	6
<i>Harmonies</i>	12
<i>Previews</i>	24
<i>Color Blindness Simulation</i>	28
<i>CSS Examples</i>	31

Color

**XYZ(42.7483, 42.7957,
45.0370)**

Conversions

Conversions Part 1

Format	Color
Hex	BCABAC
RGB	188, 171, 172
RGB Percent	74%, 67%, 67%
CMY	0.2627, 0.3294, 0.3255
CMYK	0.00, 0.09, 0.09, 0.26
HSL	356°, 11%, 70%
HSV	356°, 9%, 74%
XYZ	42.7483, 42.7957, 45.0370
YIQ	176.1970, 9.8110, 3.9150

Conversions

Conversions Part 2

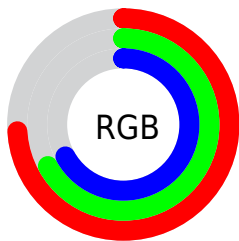
Format	Color
RYB	188, 171, 172
Decimal	12364716
CIELab	71.42, 6.29, 1.70
CIELCh	71, 6.519, 15.128
Yxy	42.7957, 0.3274, 0.3277
Android (android.graphics.Color)	4290554796 (0xFFBCABAC)
YUV	176.1970, -2.0691, 10.3512
Hunter-Lab	65.4184, 2.1603, 4.9750

Details

The XYZ color **42.7483, 42.7957, 45.0370** is a light color, and the websafe version is hex **999999**. A complement of this color would be **43.7490, 48.2133, 54.0163**, and the grayscale version is **41.3774, 43.5323, 47.4066**.

A 20% lighter version of the original color is **78.3697, 79.1719, 83.8242**, and **19.9787, 19.7006, 20.5189** is the 20% darker color. If you saturate the color by 10%, you get **37.8587, 35.5576, 35.5725**, and if you desaturate by 10%, it is **48.3718, 51.1383, 55.8640**.

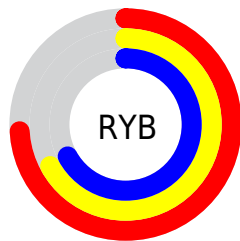
Distribution



Red (74%)

Green (67%)

Blue (67%)



Red (74%)

Yellow (67%)

Blue (67%)

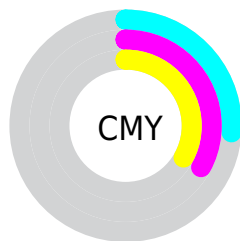


Cyan (0%)

Magenta (9%)

Yellow (9%)

Black (26%)



Cyan (26%)

Magenta (33%)

Yellow (33%)

Brightness & Saturation Gradients

These gradients show how the XYZ color 42.7483, 42.7957, 45.0370 changes by changing the brightness by 10 percent. The first figure shows a shift by +10% for each color and the second figure -10%.

Similar to the brightness gradients but the following saturation gradients show a change of the XYZ color 42.7483, 42.7957, 45.0370 by changing the saturation by 10% instead.

■ 42.7483, 42.7957,
45.0370

■ 42.7483, 42.7957,
45.0370

348.5147,
357.7709, 383.0879

■ 29.8813, 29.7249,
31.1434

■ 78.5890, 79.4025,
84.0950

■ 19.8962, 19.6298,
20.4487

102.2934,
103.7072, 110.0964

■ 12.4274, 12.1263,
12.5343

130.3410,
132.5253, 140.9709

■ 7.1097, 6.8297,
6.9817

163.0972,
166.2412, 177.1370

■ 3.5778, 3.3558,
3.3724

200.9274,
205.2394, 219.0132

■ 1.4661, 1.3202,
1.2878

244.1967,

■ 0.3026, 0.1568,

249.9041, 267.0180

0.0518

293.2707,
300.6198, 321.5701

■ 0.0000, 0.0000,
0.0000

■ 42.7483, 42.7957,
45.0370

■ 42.7483, 42.7957,
45.0370

■ 37.8587, 35.5576,
35.5725

■ 48.3718, 51.1383,
55.8640

■ 33.6694, 29.3723,
27.4138

■ 54.7538, 60.6230,
68.1015

■ 30.1492, 24.1926,
20.5045

■ 61.9226, 71.2927,
81.7987

■ 27.2636, 19.9652,
14.7828

■ 69.9036, 83.1862,
97.0014

■ 24.9746, 16.6323,
10.1819

■ 74.5492, 89.4315,
107.9406

■ 23.2405, 14.1294,
6.6281

■ 22.0140, 12.3836,
4.0390

■ 21.2399, 11.3093,
2.3200

■ 20.8297, 10.7590,
1.3503

Harmonies

Analogous

The Analogous color harmony consists of three colors that are next to each other on the color wheel.



42.7508, 42.7957, 48.1664



42.7483, 42.7957, 45.0370



42.1838, 42.7957, 42.4423

Triad

The Triadic color harmony groups three colors that are evenly spaced from another and form a triangle on the color wheel.



42.7483, 42.7957, 45.0370



39.1981, 42.7957, 42.4603



40.1366, 42.7957, 52.6888

Complementary

The Complementary color scheme is a pair of colors which are on the opposite of each other on the color wheel.



42.7483, 42.7957, 45.0370



43.7490, 48.2133, 54.0163

Split Complementary

Split-complementary colors differ from the complementary color scheme. The scheme consists of three colors, the original color and two neighbors of the complement color.



39.2046, 42.7957, 51.0149



42.7483, 42.7957, 45.0370



38.6695, 42.7957, 45.0626

Square

The Square scheme is like the rectangle color scheme, but the four colors are evenly spaced on the color wheel.



42.7483, 42.7957, 45.0370



40.1275, 42.7957, 41.0008



38.6718, 42.7957, 48.1931



41.2295, 42.7957, 52.6811

Rectangle

The Rectangle color scheme consists of four colors that form a rectangle on the color wheel.



42.7483, 42.7957, 45.0370



41.5705, 42.7957, 41.3241



38.6718, 42.7957, 48.1931



39.7945, 42.7957, 52.3009

Sweetspot

The Sweet Spot groups the original color and five complimentary colors.



42.7495, 42.7976, 45.0379



83.4188, 86.3757, 93.0772



44.1021, 43.3065, 53.6120



17.7606, 18.3102, 19.6727



90.7827, 95.5105, 104.0109



18.6292, 19.5994, 21.3438

Same Dimension

The Same Dimension uses a secret algorithm to generate beautiful new colors.



42.7495, 42.7976, 45.0379



75.4703, 74.5912, 77.7494



44.0844, 45.6200, 45.0123



9.5522, 9.5452, 10.0311



14.1710, 7.2996, 0.9283



0.5629, 0.2891, 0.0777

Inverse Universe

The Inverse Universe completely reimagines the original color for something new.



42.7495, 42.7976, 45.0379



75.4703, 74.5912, 77.7494



42.3227, 45.1891, 54.0691



9.5522, 9.5452, 10.0311



14.1710, 7.2996, 0.9283



0.5629, 0.2891, 0.0777

Previews

White Background



This preview shows how the XYZ color 42.7483, 42.7957, 45.0370 looks on a white background.

Color Contrast Check

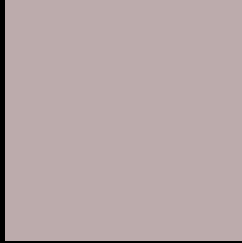
Large Text (above 18pt) WCAG AA × Fail

Any Text WCAG AA × Fail

Large Text (above 18pt) WCAG AAA × Fail

Any Text WCAG AAA × Fail

Black Background



This preview shows how the XYZ color 42.7483, 42.7957, 45.0370 looks on a black background.

Color Contrast Check

Large Text (above 18pt) WCAG AA ✓ Pass

Any Text WCAG AA ✓ Pass

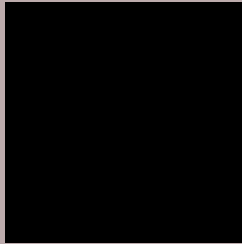
Large Text (above 18pt) WCAG AAA ✓ Pass

Any Text WCAG AAA ✓ Pass

If you want to check with other color combinations, try the [Color Contrast Checker](#).

XYZ 42.7483, 42.7957, 45.0370

Background



This preview shows how black text looks on a background with the XYZ color 42.7483, 42.7957, 45.0370.



This preview shows how white text looks on a background with the XYZ color 42.7483, 42.7957,

Color Blindness Simulation

Color vision deficiency is a very complex topic, and I could not describe the different causes any better than Wikipedia does, so if you want to learn more, you should check out their [article about color blindness](#).

Dichromacy



Original Color

42.7483, 42.7957, 45.0370

Protanopia

41.1361, 42.7931, 46.1362

Deuteranopia

43.6267, 42.6919, 44.9707



Tritanopia

43.7215, 42.6136, 50.7206

Trichromacy



Original Color

42.7483, 42.7957, 45.0370

Protanomaly

41.7778, 42.8494, 45.6040

Deuteranomaly

43.3070, 42.8044, 45.0093

Tritanomaly

43.4977, 42.8229, 48.6209

Monochromacy



Original Color

42.7483, 42.7957, 45.0370

Achromatopsia

41.2663, 43.4154, 47.2793

Achromatomaly

41.6963, 43.0705, 46.6733

CSS Examples

Text

The CSS property to change the color of the text to XYZ 42.7483, 42.7957, 45.0370 is called "color". The color property can be set on classes, ids or directly on the HTML element.

This example shows how text in the color rgb(188, 171, 172) looks like.

```
.text, #text, p{  
    color:rgb(188, 171, 172)  
}
```

If you want to add a text shadow in that color use the text-shadow property, you can generate a text shadow directly with our [CSS Text Shadow Generator](#).

Here you see how black text with a 4 pixel rgb(188, 171, 172) colored shadow looks like.

```
.shadow{ text-shadow: 4px 4px 2px rgb(188, 171, 172) }
```

Border

The CSS property to change the border of an element to XYZ 42.7483, 42.7957, 45.0370 is called "border". The border property can be set on classes, ids or directly on the HTML element.

This example shows the color as border, it can be applied via the CSS property "border" or "border-color".

```
.border, #border, table{ border:4px solid rgb(188, 171, 172) }
```


If only the border color should be changed use the property `border-color`.

```
.border{ border-color:rgb(188, 171, 172) }
```

If you want to add a box shadow in that color use:

Here you see how a box with a 4 pixel `rgb(188, 171, 172)` colored shadow looks like.

```
.boxshadow{ -moz-box-shadow:4px 4px 4px  
4px rgb(188, 171, 172); -webkit-box-  
shadow:4px 4px 4px 4px rgb(188, 171, 172);  
box-shadow:4px 4px 4px 4px rgb(188, 171,  
172) }
```

Background

The CSS property to change the background color of an element to XYZ 42.7483, 42.7957, 45.0370 is called "background". The background property can be set on classes, ids or directly on the HTML element.

```
.background, #background, body{  
background: rgb(188, 171, 172) }
```

If only the background color should be changed can be used:

```
.background{ background-color: rgb(188,  
171, 172) }
```

This example shows the color as background, it is applied via the CSS property "background".

To optimize and compress your CSS code, you can use our [online CSS compressor and optimizer](#) based on csstidy. If you want to create a linear or radial gradient as background or border, check our [CSS Gradient Generator](#).

Hey! You found this booklet interesting? Support Converting Colors with the new Membership Option!

The pro membership hides all ads, plus gives you double the colors in the color bucket, and more awesome pro features!

[Learn more, Memberships starting at \\$2.50/m!](#)

**Follow me
on Twitter!**

@ConvertingColor