

Converting Colors

XYZ(42.8089, 41.3579, 36.3072)

Have a look what the booklet for
XYZ(42.8089, 41.3579, 36.3072)
contains.

XYZ(42.8411, 41.3855, 36.3021)	3
<i>Conversions</i>	4
<i>Details</i>	6
<i>Harmonies</i>	12
<i>Previews</i>	24
<i>Color Blindness Simulation</i>	28
<i>CSS Examples</i>	31

Color

**XYZ(42.8411, 41.3855,
36.3021)**

Conversions

Conversions Part 1

Format	Color
Hex	C7A59A
RGB	199, 165, 154
RGB Percent	78%, 65%, 60%
CMY	0.2196, 0.3529, 0.3961
CMYK	0.00, 0.17, 0.23, 0.22
HSL	15°, 29%, 69%
HSV	15°, 23%, 78%
XYZ	42.8411, 41.3855, 36.3021
YIQ	173.9120, 23.7950, 3.7870

Conversions

Conversions Part 2

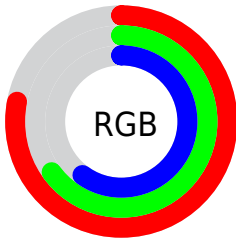
Format	Color
R _Y B	199, 169, 154
Decimal	13084058
CIE Lab	70.45, 10.75, 10.36
CIE LCh	70, 14.934, 43.932
Yxy	41.3855, 0.3554, 0.3434
Android (android.graphics.Color)	4291274138 (0xFFC7A59A)
YUV	173.9120, -9.8166, 22.0022
Hunter-Lab	64.3316, 6.2904, 11.5749

Details

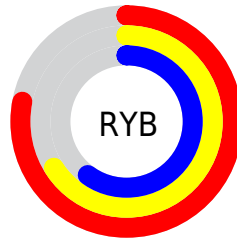
The XYZ color **42.8411, 41.3855, 36.3021** is a light color, and the websafe version is hex **CC9999**. A complement of this color would be **41.6181, 46.9588, 60.9036**, and the grayscale version is **40.2281, 42.3231, 46.0899**.

A 20% lighter version of the original color is **78.2184, 77.0005, 70.4145**, and **19.8549, 18.7188, 15.3986** is the 20% darker color. If you saturate the color by 10%, you get **38.7652, 35.6697, 27.4331**, and if you desaturate by 10%, it is **47.5128, 47.8526, 46.7263**.

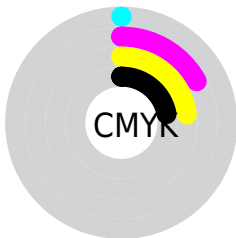
Distribution



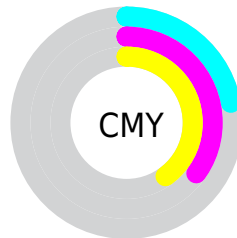
- Red (78%)
- Green (65%)
- Blue (60%)



- Red (78%)
- Yellow (66%)
- Blue (60%)



- Cyan (0%)
- Magenta (17%)
- Yellow (23%)
- Black (22%)





- Cyan (22%)
- Magenta (35%)
- Yellow (40%)

Brightness & Saturation Gradients


These gradients show how the XYZ color 42.8411, 41.3855, 36.3021 changes by changing the brightness by 10 percent. The first figure shows a shift by +10% for each color and the second figure -10%.


Similar to the brightness gradients but the following saturation gradients show a change of the XYZ color 42.8411, 41.3855, 36.3021 by changing the saturation by 10% instead.


 42.8411, 41.3855,
36.3021


 42.8411, 41.3855,
36.3021


348.8905,
351.9292, 345.3563

 29.9544, 28.6204,
24.3761


 78.7282, 77.2688,
70.6724

 19.9519, 18.7939,
15.3980


 102.4594,
101.1557, 93.9537

 12.4682, 11.5214,
8.9495


130.5361,
129.5188, 121.8572

 7.1378, 6.4187,
4.6119

163.3238,
162.7423, 154.8014

 3.5955, 3.1013,
1.9667

201.1877,
201.2107, 193.2049

 1.4760, 1.1849,
0.5347

244.4932,

 0.3094, 0.0493,

245.3084, 237.4862

0.0000

293.6057,
295.4198, 288.0638

■ 0.0000, 0.0000,
0.0000

■ 42.8411, 41.3855,
36.3021

■ 42.8411, 41.3855,
36.3021

■ 38.7652, 35.6697,
27.4331

■ 47.5128, 47.8526,
46.7263

■ 35.2573, 30.6721,
20.0417

■ 52.8001, 55.0912,
58.7729

■ 32.2921, 26.3654,
14.0477

■ 58.7258, 63.1279,
72.5083

■ 29.8412, 22.7186,
9.3620

■ 65.3107, 71.9863,
87.9946

■ 27.8733, 19.6979,
5.8850

■ 72.5745, 81.6890,
105.2905

■ 26.3535, 17.2665,
3.5030

■ 77.3633, 90.8822,
108.0723

■ 25.2412, 15.3833,
2.0798

■ 24.6375, 14.3106,
1.4637

Harmonies

Analogous

The Analogous color harmony consists of three colors that are next to each other on the color wheel.



44.1071, 41.3855, 41.8785



42.8411, 41.3855, 36.3021



40.6593, 41.3855, 33.2585

Triad

The Triadic color harmony groups three colors that are evenly spaced from another and form a triangle on the color wheel.



42.8411, 41.3855, 36.3021



34.9636, 41.3855, 41.4156



40.4854, 41.3855, 59.5288

Complementary

The Complementary color scheme is a pair of colors which are on the opposite of each other on the color wheel.



42.8411, 41.3855, 36.3021



41.6181, 46.9588, 60.9036

Split Complementary

Split-complementary colors differ from the complementary color scheme. The scheme consists of three colors, the original color and two neighbors of the complement color.



38.0411, 41.3855, 59.3715



42.8411, 41.3855, 36.3021



34.9214, 41.3855, 48.4024

Square

The Square scheme is like the rectangle color scheme, but the four colors are evenly spaced on the color wheel.



42.8411, 41.3855, 36.3021



36.1446, 41.3855, 35.9938



36.0269, 41.3855, 55.1281



42.7092, 41.3855, 55.5376

Rectangle

The Rectangle color scheme consists of four colors that form a rectangle on the color wheel.



42.8411, 41.3855, 36.3021



39.0123, 41.3855, 32.8540



36.0269, 41.3855, 55.1281



39.6609, 41.3855, 59.9712

Sweetspot

The Sweet Spot groups the original color and five complimentary colors.



42.8422, 41.3874, 36.3030



88.1559, 90.5990, 93.0768



44.2403, 38.9063, 53.0384



18.7474, 19.2254, 19.6450



0.0000, 0.0000, 0.0000



20.3446, 21.4041, 23.3091

Same Dimension

The Same Dimension uses a secret algorithm to generate beautiful new colors.



42.8422, 41.3874, 36.3030



71.4715, 67.5167, 55.8031



47.1567, 50.0163, 37.7411



10.8410, 11.0512, 11.1245



15.9009, 9.3190, 0.9607



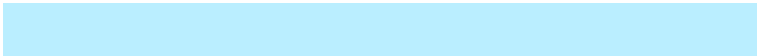
0.8119, 0.5592, 0.0651

Inverse Universe

The Inverse Universe completely reimagines the original color for something new.



41.6181, 46.9588, 60.9036



68.9585, 78.9226, 106.2068



37.2720, 38.2665, 59.4549



10.7185, 11.6111, 13.5937



13.7481, 16.8902, 37.2799



0.7051, 0.9081, 1.7833

Previews

White Background



This preview shows how the XYZ color 42.8411, 41.3855, 36.3021 looks on a white background.

Color Contrast Check

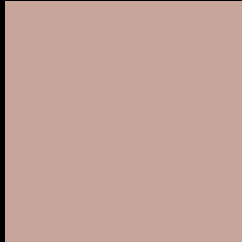
Large Text (above 18pt) WCAG AA × Fail

Any Text WCAG AA × Fail

Large Text (above 18pt) WCAG AAA × Fail

Any Text WCAG AAA × Fail

Black Background



This preview shows how the XYZ color 42.8411, 41.3855, 36.3021 looks on a black background.

Color Contrast Check

Large Text (above 18pt) WCAG AA ✓ Pass

Any Text WCAG AA ✓ Pass

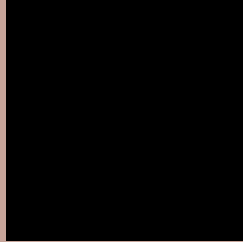
Large Text (above 18pt) WCAG AAA ✓ Pass

Any Text WCAG AAA ✓ Pass

If you want to check with other color combinations, try the [Color Contrast Checker](#).

XYZ 42.8411, 41.3855, 36.3021

Background



This preview shows how black text looks on a background with the XYZ color 42.8411, 41.3855, 36.3021.



This preview shows how white text looks on a background with the XYZ color 42.8411, 41.3855,

Color Blindness Simulation

Color vision deficiency is a very complex topic, and I could not describe the different causes any better than Wikipedia does, so if you want to learn more, you should check out their [article about color blindness](#).

Dichromacy



Original Color

42.8411, 41.3855, 36.3021

Protanopia

39.5145, 41.5574, 38.2865

Deuteranopia

42.2339, 41.3413, 36.3256



Tritanopia

44.7456, 41.3533, 46.1811

Trichromacy



Original Color

42.8411, 41.3855, 36.3021

Protanomaly

40.5235, 41.2494, 37.7244

Deuteranomaly

42.4949, 41.4758, 36.3378

Tritanomaly

43.8917, 41.2638, 42.2106

Monochromacy



Original Color

42.8411, 41.3855, 36.3021

Achromatopsia

40.2316, 42.3268, 46.0938

Achromatomaly

41.0664, 41.9831, 42.4983

CSS Examples

Text

The CSS property to change the color of the text to XYZ 42.8411, 41.3855, 36.3021 is called "color". The color property can be set on classes, ids or directly on the HTML element.

This example shows how text in the color `rgb(199, 165, 154)` looks like.

```
.text, #text, p{  
    color:rgb(199, 165, 154)  
}
```

If you want to add a text shadow in that color use the text-shadow property, you can generate a text shadow directly with our [CSS Text Shadow Generator](#).

Here you see how black text with a 4 pixel rgb(199, 165, 154) colored shadow looks like.

```
.shadow{ text-shadow: 4px 4px 2px rgb(199, 165, 154) }
```

Border

The CSS property to change the border of an element to XYZ 42.8411, 41.3855, 36.3021 is called "border". The border property can be set on classes, ids or directly on the HTML element.

This example shows the color as border, it can be applied via the CSS property "border" or "border-color".

```
.border, #border, table{ border:4px solid rgb(199, 165, 154) }
```


If only the border color should be changed use the property `border-color`.

```
.border{ border-color:rgb(199, 165, 154) }
```

If you want to add a box shadow in that color use:

Here you see how a box with a 4 pixel `rgb(199, 165, 154)` colored shadow looks like.

```
.boxshadow{ -moz-box-shadow:4px 4px 4px  
4px rgb(199, 165, 154); -webkit-box-  
shadow:4px 4px 4px 4px rgb(199, 165, 154);  
box-shadow:4px 4px 4px 4px rgb(199, 165,  
154) }
```

Background

The CSS property to change the background color of an element to XYZ 42.8411, 41.3855, 36.3021 is called "background". The background property can be set on classes, ids or directly on the HTML element.

```
.background, #background, body{  
background: rgb(199, 165, 154) }
```

If only the background color should be changed can be used:

```
.background{ background-color: rgb(199,  
165, 154) }
```

This example shows the color as background, it is applied via the CSS property "background".

To optimize and compress your CSS code, you can use our [online CSS compressor and optimizer](#) based on csstidy. If you want to create a linear or radial gradient as background or border, check our [CSS Gradient Generator](#).

Hey! You found this booklet interesting? Support Converting Colors with the new Membership Option!

The pro membership hides all ads, plus gives you double the colors in the color bucket, and more awesome pro features!

[Learn more, Memberships starting at \\$2.50/m!](#)

**Follow me
on Twitter!**

@ConvertingColor