

Converting Colors

XYZ(42.8094, 40.7589, 40.0453)

Have a look what the booklet for
XYZ(42.8094, 40.7589, 40.0453)
contains.

XYZ(42.7340, 40.7090, 40.2556)	3
<i>Conversions</i>	4
<i>Details</i>	6
<i>Harmonies</i>	12
<i>Previews</i>	24
<i>Color Blindness Simulation</i>	28
<i>CSS Examples</i>	31

Color

**XYZ(42.7340, 40.7090,
40.2556)**

Conversions

Conversions Part 1

Format	Color
Hex	C5A3A3
RGB	197, 163, 163
RGB Percent	77%, 64%, 64%
CMY	0.2274, 0.3608, 0.3608
CMYK	0.00, 0.17, 0.17, 0.23
HSL	0°, 23%, 71%
HSV	0°, 17%, 77%
XYZ	42.7340, 40.7090, 40.2556
YIQ	173.1660, 20.2640, 7.2080

Conversions

Conversions Part 2

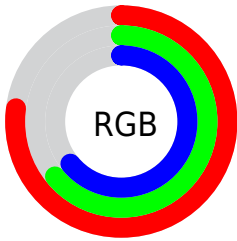
Format	Color
RYB	197, 163, 163
Decimal	12952483
CIELab	69.97, 12.48, 4.68
CIELCh	70, 13.326, 20.572
Yxy	40.7090, 0.3455, 0.3291
Android (android.graphics.Color)	4291142563 (0xFFC5A3A3)
YUV	173.1660, -5.0118, 20.9024
Hunter-Lab	63.8036, 7.8984, 7.2547

Details

The XYZ color **42.7340, 40.7090, 40.2556** is a light color, and the websafe version is hex **CC9999**. A complement of this color would be **45.1482, 51.7491, 60.4328**, and the grayscale version is **39.8236, 41.8975, 45.6264**.

A 20% lighter version of the original color is **78.5993, 76.2756, 76.9097**, and **19.8814, 18.3562, 17.5342** is the 20% darker color. If you saturate the color by 10%, you get **37.8755, 33.5998, 30.5955**, and if you desaturate by 10%, it is **48.4145, 49.0213, 51.5472**.

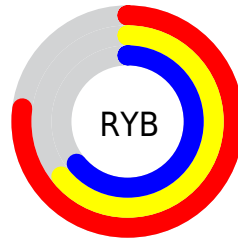
Distribution



Red (77%)

Green (64%)

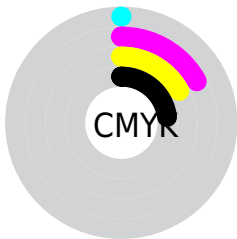
Blue (64%)



Red (77%)

Yellow (64%)

Blue (64%)

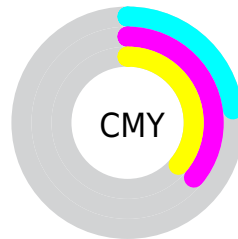


Cyan (0%)

Magenta (17%)

Yellow (17%)

Black (23%)



Cyan (23%)


Magenta (36%)


Yellow (36%)

Brightness & Saturation Gradients


These gradients show how the XYZ color 42.7340, 40.7090, 40.2556 changes by changing the brightness by 10 percent. The first figure shows a shift by +10% for each color and the second figure -10%.

Similar to the brightness gradients but the following saturation gradients show a change of the XYZ color 42.7340, 40.7090, 40.2556 by changing the saturation by 10% instead.


 42.7340, 40.7090,
40.2556


 42.7340, 40.7090,
40.2556


348.4568,
349.1029, 362.7838

 29.8701, 28.0918,
27.4226


 78.5675, 76.2420,
76.7939

 19.8876, 18.3949,
17.6556

 102.2678, 99.9265,
101.3363

 12.4211, 11.2338,
10.5361

130.3110,
128.0689, 130.6189

 7.1054, 6.2243,
5.6456

163.0623,
161.0535, 165.0602

 3.5750, 2.9820,
2.5655

200.8872,
199.2649, 205.0788

 1.4646, 1.1223,
0.8746

244.1510,

 0.3016, 0.0000,

243.0873, 251.0933

0.0000

293.2191,
292.9052, 303.5221

■ 0.0000, 0.0000,
0.0000

■ 42.7340, 40.7090,
40.2556

■ 42.7340, 40.7090,
40.2556

■ 37.8755, 33.5998,
30.5955

■ 48.4145, 49.0213,
51.5472

■ 33.7977, 27.6330,
22.4891

■ 54.9491, 58.5831,
64.5381

■ 30.4611, 22.7505,
15.8561

■ 62.3721, 69.4448,
79.2953

■ 27.8211, 18.8874,
10.6081

■ 70.7150, 81.6526,
95.8816

■ 25.8284, 15.9714,
6.6470

■ 76.8361, 90.6104,
108.0476

■ 24.4274, 13.9211,
3.8621

■ 23.5529, 12.6414,
2.1241

■ 23.1146, 11.9999,
1.2530

■ 23.0264, 11.8709,
1.0777

Harmonies

Analogous

The Analogous color harmony consists of three colors that are next to each other on the color wheel.



42.9586, 40.7090, 46.3126



42.7340, 40.7090, 40.2556



41.4049, 40.7090, 35.7171

Triad

The Triadic color harmony groups three colors that are evenly spaced from another and form a triangle on the color wheel.



42.7340, 40.7090, 40.2556



35.5570, 40.7090, 37.1576



38.0129, 40.7090, 57.1959

Complementary

The Complementary color scheme is a pair of colors which are on the opposite of each other on the color wheel.



42.7340, 40.7090, 40.2556



45.1482, 51.7491, 60.4328

Split Complementary

Split-complementary colors differ from the complementary color scheme. The scheme consists of three colors, the original color and two neighbors of the complement color.



36.1015, 40.7090, 54.2159



42.7340, 40.7090, 40.2556



34.7190, 40.7090, 42.3955

Square

The Square scheme is like the rectangle color scheme, but the four colors are evenly spaced on the color wheel.



42.7340, 40.7090, 40.2556



37.2443, 40.7090, 34.0479



34.9145, 40.7090, 48.6602



40.1781, 40.7090, 56.4867

Rectangle

The Rectangle color scheme consists of four colors that form a rectangle on the color wheel.



42.7340, 40.7090, 40.2556



40.0979, 40.7090, 33.9795



34.9145, 40.7090, 48.6602



37.3207, 40.7090, 56.5827

Sweetspot

The Sweet Spot groups the original color and five complimentary colors.



42.7351, 40.7108, 40.2565



89.1316, 91.3398, 97.1340



46.2017, 42.0964, 58.5141



18.9067, 19.3000, 20.4504



0.0000, 0.0000, 0.0000



20.3446, 21.4041, 23.3091

Same Dimension

The Same Dimension uses a secret algorithm to generate beautiful new colors.



42.7351, 40.7108, 40.2565



72.8287, 67.4843, 64.7236



45.9585, 47.1577, 41.3309



10.6340, 10.6371, 11.0555



15.1454, 7.8080, 0.7088



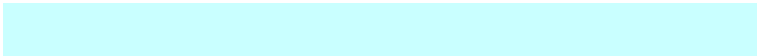
0.7172, 0.3698, 0.0336

Inverse Universe

The Inverse Universe completely reimagines the original color for something new.



45.1482, 51.7491, 60.4328



78.0168, 91.2164, 108.1023



41.5041, 44.4608, 59.2180



10.9467, 12.0674, 13.6698



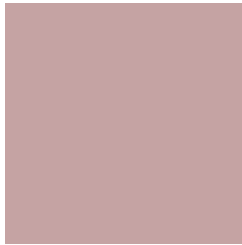
19.7585, 28.9109, 39.2833



0.9356, 1.3690, 1.8601

Previews

White Background



This preview shows how the XYZ color 42.7340, 40.7090, 40.2556 looks on a white background.

Color Contrast Check

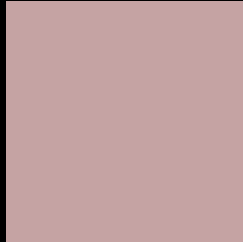
Large Text (above 18pt) WCAG AA × Fail

Any Text WCAG AA × Fail

Large Text (above 18pt) WCAG AAA × Fail

Any Text WCAG AAA × Fail

Black Background



This preview shows how the XYZ color 42.7340, 40.7090, 40.2556 looks on a black background.

Color Contrast Check

Large Text (above 18pt) WCAG AA ✓ Pass

Any Text WCAG AA ✓ Pass

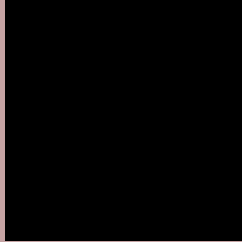
Large Text (above 18pt) WCAG AAA ✓ Pass

Any Text WCAG AAA ✓ Pass

If you want to check with other color combinations, try the [Color Contrast Checker](#).

XYZ 42.7340, 40.7090, 40.2556

Background



This preview shows how black text looks on a background with the XYZ color 42.7340, 40.7090, 40.2556.



This preview shows how white text looks on a background with the XYZ color 42.7340, 40.7090,

40.2556.

Color Blindness Simulation

Color vision deficiency is a very complex topic, and I could not describe the different causes any better than Wikipedia does, so if you want to learn more, you should check out their [article about color blindness](#).

Dichromacy



Original Color

42.7340, 40.7090, 40.2556

Protanopia

39.0290, 40.6534, 42.3491

Deuteranopia

41.5519, 40.6310, 40.3029



Tritanopia

43.6736, 40.5515, 45.5698

Trichromacy



Original Color

42.7340, 40.7090, 40.2556

Protanomaly

40.2301, 40.4579, 41.7652

Deuteranomaly

41.8786, 40.5327, 40.2667

Tritanomaly

43.4647, 40.7487, 43.6047

Monochromacy



Original Color

42.7340, 40.7090, 40.2556

Achromatopsia

39.7200, 41.7885, 45.5077

Achromatomaly

40.6408, 41.1856, 43.3437

CSS Examples

Text

The CSS property to change the color of the text to XYZ 42.7340, 40.7090, 40.2556 is called "color". The color property can be set on classes, ids or directly on the HTML element.

This example shows how text in the color `rgb(197, 163, 163)` looks like.

```
.text, #text, p{  
    color:rgb(197, 163, 163)  
}
```

If you want to add a text shadow in that color use the text-shadow property, you can generate a text shadow directly with our [CSS Text Shadow Generator](#).

Here you see how black text with a 4 pixel rgb(197, 163, 163) colored shadow looks like.

```
.shadow{ text-shadow: 4px 4px 2px rgb(197, 163, 163) }
```

Border

The CSS property to change the border of an element to XYZ 42.7340, 40.7090, 40.2556 is called "border". The border property can be set on classes, ids or directly on the HTML element.

This example shows the color as border, it can be applied via the CSS property "border" or "border-color".

```
.border, #border, table{ border:4px solid rgb(197, 163, 163) }
```


If only the border color should be changed use the property `border-color`.

```
.border{ border-color:rgb(197, 163, 163) }
```

If you want to add a box shadow in that color use:

Here you see how a box with a 4 pixel `rgb(197, 163, 163)` colored shadow looks like.

```
.boxshadow{ -moz-box-shadow:4px 4px 4px  
4px rgb(197, 163, 163); -webkit-box-  
shadow:4px 4px 4px 4px rgb(197, 163, 163);  
box-shadow:4px 4px 4px 4px rgb(197, 163,  
163) }
```

Background

The CSS property to change the background color of an element to XYZ 42.7340, 40.7090, 40.2556 is called "background". The background property can be set on classes, ids or directly on the HTML element.

```
.background, #background, body{  
background: rgb(197, 163, 163) }
```

If only the background color should be changed can be used:

```
.background{ background-color: rgb(197,  
163, 163) }
```

This example shows the color as background, it is applied via the CSS property "background".

To optimize and compress your CSS code, you can use our [online CSS compressor and optimizer](#) based on csstidy. If you want to create a linear or radial gradient as background or border, check our [CSS Gradient Generator](#).

Hey! You found this booklet interesting? Support Converting Colors with the new Membership Option!

The pro membership hides all ads, plus gives you double the colors in the color bucket, and more awesome pro features!

[Learn more, Memberships starting at \\$2.50/m!](#)

**Follow me
on Twitter!**

@ConvertingColor