

# Converting Colors

XYZ(42.8219, 40.8051, 37.9670)

Have a look what the booklet for  
XYZ(42.8219, 40.8051, 37.9670)  
contains.

<b>XYZ(42.8219, 40.8051, 37.9670)</b> .....	3
<b><i>Conversions</i></b> .....	4
<b><i>Details</i></b> .....	6
<b><i>Harmonies</i></b> .....	12
<b><i>Previews</i></b> .....	24
<b><i>Color Blindness Simulation</i></b> .....	28
<b><i>CSS Examples</i></b> .....	31

# Color

**XYZ(42.8219, 40.8051,  
37.9670)**

# Conversions

## Conversions Part 1

<b>Format</b>	<b>Color</b>
Hex	C7A39E
RGB	199, 163, 158
RGB Percent	78%, 64%, 62%
CMY	0.2196, 0.3608, 0.3804
CMYK	0.00, 0.18, 0.21, 0.22
HSL	7°, 27%, 70%
HSV	7°, 21%, 78%
XYZ	42.8219, 40.8051, 37.9670
YIQ	173.1940, 23.0610, 6.0770

# Conversions

## Conversions Part 2

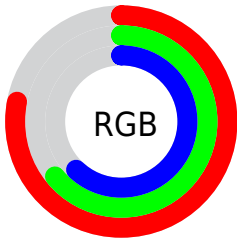
Format	Color
<a href="#">RYB</a>	<a href="#">199, 164, 158</a>
Decimal	<a href="#">13083550</a>
CIELab	<a href="#">70.04, 12.45, 7.57</a>
CIElCh	<a href="#">70, 14.570, 31.315</a>
Yxy	<a href="#">40.8051, 0.3522, 0.3356</a>
Android (android.graphics.Color)	<a href="#">4291273630 (0xFFC7A39E)</a>
YUV	<a href="#">173.1940, -7.4906, 22.6319</a>
Hunter-Lab	<a href="#">63.8789, 7.8714, 9.4756</a>

# Details

The XYZ color **42.8219, 40.8051, 37.9670** is a light color, and the websafe version is hex **CC9999**. A complement of this color would be **43.7007, 49.9749, 61.3759**, and the grayscale version is **39.8491, 41.9244, 45.6557**.

A 20% lighter version of the original color is **78.3216, 76.2069, 73.5322**, and **20.0153, 18.4502, 16.4162** is the 20% darker color. If you saturate the color by 10%, you get **38.3552, 34.3943, 28.7004**, and if you desaturate by 10%, it is **47.9968, 48.1877, 48.8390**.

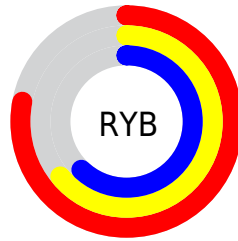
# Distribution



Red (78%)

Green (64%)

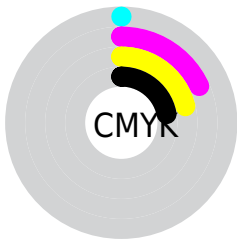
Blue (62%)



Red (78%)

Yellow (64%)

Blue (62%)

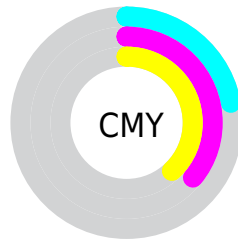


Cyan (0%)

Magenta (18%)

Yellow (21%)

Black (22%)



Cyan (22%)

Magenta (36%)


Yellow (38%)


# Brightness & Saturation Gradients

These gradients show how the XYZ color 42.8219, 40.8051, 37.9670 changes by changing the brightness by 10 percent. The first figure shows a shift by +10% for each color and the second figure -10%.


Similar to the brightness gradients but the following saturation gradients show a change of the XYZ color 42.8219, 40.8051, 37.9670 by changing the saturation by 10% instead.




 42.8219, 40.8051,  
37.9670


 42.8219, 40.8051,  
37.9670


348.8128,  
349.5054, 352.7723

 29.9393, 28.1668,  
25.6554


 78.6994, 76.3879,  
73.2604

 19.9404, 18.4515,  
16.3426


 102.4251,  
100.1013, 97.0794

 12.4597, 11.2746,  
9.6099


130.4958,  
128.2751, 125.5712

 7.1320, 6.2518,  
5.0389


163.2769,  
161.2939, 159.1544

 3.5919, 2.9988,  
2.2110

201.1338,  
199.5418, 198.2476

 1.4739, 1.1311,  
0.6807

244.4319,

 0.3080, 0.0043,

243.4035, 243.2693

0.0000

293.5364,  
293.2632, 294.6380

■ 0.0000, 0.0000,  
0.0000

■ 42.8219, 40.8051,  
37.9670

■ 42.8219, 40.8051,  
37.9670

■ 38.3552, 34.3943,  
28.7004

■ 47.9968, 48.1877,  
48.8390

■ 34.5625, 28.9095,  
20.9608

■ 53.9055, 56.5745,  
61.3849

■ 31.4120, 24.3095,  
14.6666

■ 60.5764, 66.0031,  
75.6721

■ 28.8677, 20.5477,  
9.7280

■ 68.0353, 76.5076,  
91.7638

■ 26.8901, 17.5733,  
6.0449

■ 75.9014, 87.9585,  
107.5850

■ 25.4349, 15.3300,  
3.5034

■ 77.3633, 90.8822,  
108.0723

■ 24.4511, 13.7537,  
1.9688

■ 23.8858, 12.8073,  
1.2131

# Harmonies

## Analogous

The Analogous color harmony consists of three colors that are next to each other on the color wheel.



43.5359, 40.8051, 44.1301



42.8219, 40.8051, 37.9670



41.0199, 40.8051, 33.9061

# Triad

The Triadic color harmony groups three colors that are evenly spaced from another and form a triangle on the color wheel.



42.8219, 40.8051, 37.9670



34.9104, 40.8051, 38.4374



38.8890, 40.8051, 58.8453

# Complementary

The Complementary color scheme is a pair of colors which are on the opposite of each other on the color wheel.



42.8219, 40.8051, 37.9670



43.7007, 49.9749, 61.3759

# Split Complementary

Split-complementary colors differ from the complementary color scheme. The scheme consists of three colors, the original color and two neighbors of the complement color.



36.6310, 40.8051, 56.9328



42.8219, 40.8051, 37.9670



34.3911, 40.8051, 44.7309

# Square

The Square scheme is like the rectangle color scheme, but the four colors are evenly spaced on the color wheel.



42.8219, 40.8051, 37.9670



36.4564, 40.8051, 34.1575



35.0083, 40.8051, 51.5873



41.2087, 40.8051, 56.5792



# Rectangle

The Rectangle color scheme consists of four colors that form a rectangle on the color wheel.



42.8219, 40.8051, 37.9670



39.4784, 40.8051, 32.7041



35.0083, 40.8051, 51.5873



38.0978, 40.8051, 58.6686

# Sweetspot

The Sweet Spot groups the original color and five complimentary colors.



42.8230, 40.8070, 37.9678



88.5471, 90.7804, 95.0600



45.5424, 40.5011, 56.5840



18.8075, 19.2245, 20.0387



0.0000, 0.0000, 0.0000



20.3446, 21.4041, 23.3091



# Same Dimension

The Same Dimension uses a secret algorithm to generate beautiful new colors.



42.8230, 40.8070, 37.9678



71.1019, 65.8934, 58.4058



46.7171, 48.5951, 39.2659



10.7364, 10.8420, 11.0896



15.3939, 8.3051, 0.7917



0.7644, 0.4643, 0.0493



# Inverse Universe

The Inverse Universe completely reimagines the original color for something new.



43.7007, 49.9749, 61.3759



72.9268, 84.9849, 107.1678



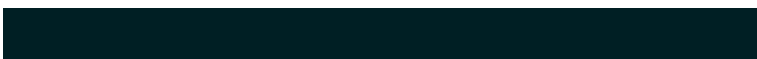
39.4912, 41.5559, 59.9727



10.8320, 11.8381, 13.6316



16.4938, 22.3814, 38.1951

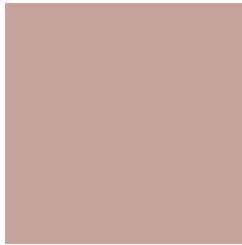


0.8129, 1.1235, 1.8192



# Previews

## White Background



This preview shows how the XYZ color 42.8219, 40.8051, 37.9670 looks on a white background.

## Color Contrast Check

Large Text (above 18pt) WCAG AA × Fail

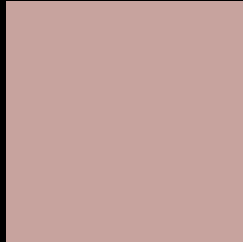
Any Text WCAG AA × Fail

Large Text (above 18pt) WCAG AAA × Fail

Any Text WCAG AAA × Fail



# Black Background



This preview shows how the XYZ color 42.8219, 40.8051, 37.9670 looks on a black background.

## Color Contrast Check

Large Text (above 18pt) WCAG AA ✓ Pass

Any Text WCAG AA ✓ Pass

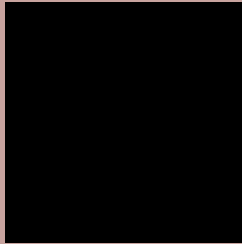
Large Text (above 18pt) WCAG AAA ✓ Pass

Any Text WCAG AAA ✓ Pass

If you want to check with other color combinations, try the [Color Contrast Checker](#).

**XYZ 42.8219, 40.8051, 37.9670**

## **Background**



This preview shows how black text looks on a background with the XYZ color 42.8219, 40.8051, 37.9670.



This preview shows how white text looks on a background with the XYZ color 42.8219, 40.8051,

37.9670.

# Color Blindness Simulation

Color vision deficiency is a very complex topic, and I could not describe the different causes any better than Wikipedia does, so if you want to learn more, you should check out their [article about color blindness](#).

## Dichromacy



### Original Color

42.8219, 40.8051, 37.9670

### Protanopia

39.2160, 41.0816, 40.0451

### Deuteranopia

41.6190, 40.7163, 38.0132



## Tritanopia

44.3751, 40.9244, 45.0955

# Trichromacy



## Original Color

42.8219, 40.8051, 37.9670

## Protanomaly

40.4432, 40.8928, 39.4797

## Deuteranomaly

41.9527, 40.6216, 37.9774

## Tritanomaly

43.8076, 40.9472, 42.6405

# Monochromacy



## Original Color

42.8219, 40.8051, 37.9670

## Achromatopsia

39.7200, 41.7885, 45.5077

## Achromatomaly

40.5473, 41.1482, 42.8511

# CSS Examples

## Text

The CSS property to change the color of the text to XYZ 42.8219, 40.8051, 37.9670 is called "color". The color property can be set on classes, ids or directly on the HTML element.

This example shows how text in the color `rgb(199, 163, 158)` looks like.

```
.text, #text, p{  
    color:rgb(199, 163, 158)  
}
```

If you want to add a text shadow in that color use the text-shadow property, you can generate a text shadow directly with our [CSS Text Shadow Generator](#).

Here you see how black text with a 4 pixel rgb(199, 163, 158) colored shadow looks like.

```
.shadow{ text-shadow: 4px 4px 2px rgb(199, 163, 158) }
```

## Border

The CSS property to change the border of an element to XYZ 42.8219, 40.8051, 37.9670 is called "border". The border property can be set on classes, ids or directly on the HTML element.

This example shows the color as border, it can be applied via the CSS property "border" or "border-color".

```
.border, #border, table{ border:4px solid rgb(199, 163, 158) }
```



If only the border color should be changed use the property `border-color`.

```
.border{ border-color:rgb(199, 163, 158) }
```

If you want to add a box shadow in that color use:

Here you see how a box with a 4 pixel `rgb(199, 163, 158)` colored shadow looks like.

```
.boxshadow{ -moz-box-shadow:4px 4px 4px  
4px rgb(199, 163, 158); -webkit-box-  
shadow:4px 4px 4px 4px rgb(199, 163, 158);  
box-shadow:4px 4px 4px 4px rgb(199, 163,  
158) }
```

# Background

The CSS property to change the background color of an element to XYZ 42.8219, 40.8051, 37.9670 is called "background". The background property can be set on classes, ids or directly on the HTML element.

```
.background, #background, body{  
background: rgb(199, 163, 158) }
```

If only the background color should be changed can be used:

```
.background{ background-color: rgb(199,  
163, 158) }
```

This example shows the color as background, it is applied via the CSS property "background".

To optimize and compress your CSS code, you can use our [online CSS compressor and optimizer](#) based on csstidy. If you want to create a linear or radial gradient as background or border, check our [CSS Gradient Generator](#).

Hey! You found this booklet interesting? Support Converting Colors with the new Membership Option!

The pro membership hides all ads, plus gives you double the colors in the color bucket, and more awesome pro features!

**[Learn more, Memberships starting at \\$2.50/m!](#)**

**Follow me  
on Twitter!**

@ConvertingColor