

# Converting Colors

XYZ(42.8731, 43.4753, 45.1345)

Have a look what the booklet for  
XYZ(42.8731, 43.4753, 45.1345)  
contains.

<b>XYZ(42.8835, 43.4305, 45.1524)</b> .....	3
<b><i>Conversions</i></b> .....	4
<b><i>Details</i></b> .....	6
<b><i>Harmonies</i></b> .....	12
<b><i>Previews</i></b> .....	24
<b><i>Color Blindness Simulation</i></b> .....	28
<b><i>CSS Examples</i></b> .....	31

# Color

**XYZ(42.8835, 43.4305,  
45.1524)**

# Conversions

## Conversions Part 1

<b>Format</b>	<b>Color</b>
Hex	BBADAC
RGB	187, 173, 172
RGB Percent	73%, 68%, 67%
CMY	0.2667, 0.3216, 0.3255
CMYK	0.00, 0.07, 0.08, 0.27
HSL	4°, 10%, 70%
HSV	4°, 8%, 73%
XYZ	42.8835, 43.4305, 45.1524
YIQ	177.0720, 8.6650, 2.6570

# Conversions

## Conversions Part 2

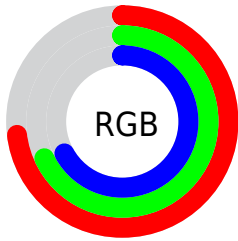
<b>Format</b>	<b>Color</b>
<b>RYB</b>	187, 173, 172
Decimal	12299692
CIELab	71.85, 4.84, 2.32
CIELCh	72, 5.368, 25.557
Yxy	43.4305, 0.3262, 0.3304
Android (android.graphics.Color)	4290489772 (0xFFBBADAC)
YUV	177.0720, -2.5005, 8.7069
Hunter-Lab	65.9018, 0.8250, 5.5089

# Details

The XYZ color **42.8835, 43.4305, 45.1524** is a light color, and the websafe version is hex **999999**. A complement of this color would be **43.5417, 47.4755, 53.8831**, and the grayscale version is **41.8383, 44.0172, 47.9347**.

A 20% lighter version of the original color is **78.5707, 80.0875, 83.9904**, and **20.0591, 20.0991, 20.5916** is the 20% darker color. If you saturate the color by 10%, you get **38.0824, 36.5028, 35.3061**, and if you desaturate by 10%, it is **48.3768, 51.3372, 56.4774**.

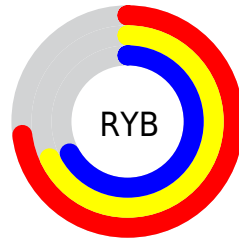
# Distribution



Red (73%)

Green (68%)

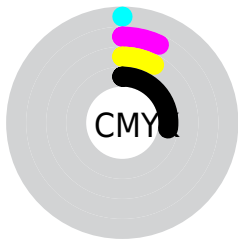
Blue (67%)



Red (73%)

Yellow (68%)

Blue (67%)

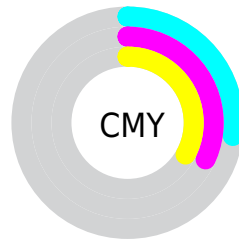


Cyan (0%)

Magenta (7%)

Yellow (8%)

Black (27%)



Cyan (27%)

Magenta (32%)

Yellow (33%)

# Brightness & Saturation Gradients

These gradients show how the XYZ color 42.8835, 43.4305, 45.1524 changes by changing the brightness by 10 percent. The first figure shows a shift by +10% for each color and the second figure -10%.

Similar to the brightness gradients but the following saturation gradients show a change of the XYZ color 42.8835, 43.4305, 45.1524 by changing the saturation by 10% instead.



■ 42.8835, 43.4305,  
45.1524

■ 42.8835, 43.4305,  
45.1524

349.0621,  
360.3792, 383.5685

■ 29.9878, 30.2230,  
31.2337

■ 78.7918, 80.3601,  
84.2699

■ 19.9774, 20.0079,  
20.5169

102.5352,  
104.8510, 110.3058

■ 12.4868, 12.4008,  
12.5835

130.6252,  
133.8719, 141.2178

■ 7.1507, 7.0173,  
7.0151

163.4272,  
167.8071, 177.4245

■ 3.6037, 3.4729,  
3.3929

201.3066,  
207.0410, 219.3443

■ 1.4805, 1.3833,  
1.2986

244.6286,

■ 0.3125, 0.2044,

251.9581, 267.3959

0.0606

293.7586,  
302.9427, 321.9978

■ 0.0000, 0.0000,  
0.0000

■ 42.8835, 43.4305,  
45.1524

■ 42.8835, 43.4305,  
45.1524

■ 38.0824, 36.5028,  
35.3061

■ 48.3768, 51.3372,  
56.4774

■ 33.9426, 30.5104,  
26.8748

■ 54.5844, 60.2527,  
69.3355

■ 30.4361, 25.4151,  
19.7942

■ 61.5320, 70.2131,  
83.7821

■ 27.5317, 21.1736,  
13.9942

■ 69.2428, 81.2505,  
99.8687

■ 25.1955, 17.7393,  
9.3983

■ 74.3038, 89.3049,  
107.9291

■ 23.3900, 15.0608,  
5.9216

■ 22.0735, 13.0812,  
3.4685

■ 21.1978, 11.7351,  
1.9273

■ 20.6988, 10.9425,  
1.1274

# Harmonies

## Analogous

The Analogous color harmony consists of three colors that are next to each other on the color wheel.



43.0545, 43.4305, 47.6790



42.8835, 43.4305, 45.1524



42.2803, 43.4305, 43.2621

# Triad

The Triadic color harmony groups three colors that are evenly spaced from another and form a triangle on the color wheel.



42.8835, 43.4305, 45.1524



39.8485, 43.4305, 44.5014



41.1435, 43.4305, 52.4803

# Complementary

The Complementary color scheme is a pair of colors which are on the opposite of each other on the color wheel.



42.8835, 43.4305, 45.1524



43.5417, 47.4755, 53.8831

# Split Complementary

Split-complementary colors differ from the complementary color scheme. The scheme consists of three colors, the original color and two neighbors of the complement color.



40.2944, 43.4305, 51.5571



42.8835, 43.4305, 45.1524



39.5537, 43.4305, 46.9000

# Square

The Square scheme is like the rectangle color scheme, but the four colors are evenly spaced on the color wheel.



42.8835, 43.4305, 45.1524



40.5266, 43.4305, 42.8961



39.7158, 43.4305, 49.4908



42.0414, 43.4305, 51.9708



# Rectangle

The Rectangle color scheme consists of four colors that form a rectangle on the color wheel.



42.8835, 43.4305, 45.1524



41.7188, 43.4305, 42.5848



39.7158, 43.4305, 49.4908



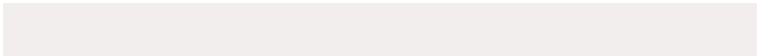
40.8431, 43.4305, 52.3263

# Sweetspot

The Sweet Spot groups the original color and five complimentary colors.



42.8847, 43.4324, 45.1533



82.5449, 86.0511, 92.6903



44.1096, 43.6156, 52.5488



18.2005, 18.9825, 20.4588



90.7827, 95.5105, 104.0109



18.6292, 19.5994, 21.3438



# Same Dimension

The Same Dimension uses a secret algorithm to generate beautiful new colors.



42.8847, 43.4324, 45.1533



74.8622, 74.9853, 76.8748



44.3629, 46.3887, 45.6461



9.5800, 9.6361, 9.9317



14.2351, 7.5090, 0.6991



0.5753, 0.3296, 0.0333



# Inverse Universe

The Inverse Universe completely reimagines the original color for something new.



43.5417, 47.4755, 53.8831



76.3313, 84.0266, 96.3971



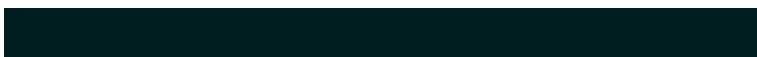
42.0035, 44.3993, 53.3704



9.7525, 10.6973, 12.2230



16.6956, 23.5030, 36.0495

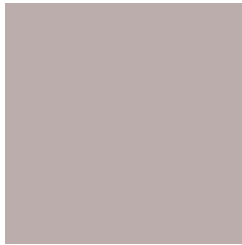


0.6706, 0.9538, 1.4176



# Previews

## White Background



This preview shows how the XYZ color 42.8835, 43.4305, 45.1524 looks on a white background.

## Color Contrast Check

Large Text (above 18pt) WCAG AA × Fail

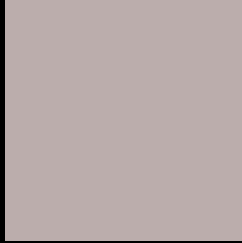
Any Text WCAG AA × Fail

Large Text (above 18pt) WCAG AAA × Fail

Any Text WCAG AAA × Fail



# Black Background



This preview shows how the XYZ color 42.8835, 43.4305, 45.1524 looks on a black background.

## Color Contrast Check

Large Text (above 18pt) WCAG AA ✓ Pass

Any Text WCAG AA ✓ Pass

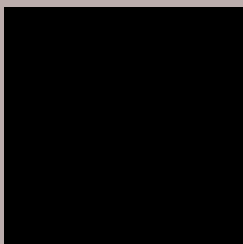
Large Text (above 18pt) WCAG AAA ✓ Pass

Any Text WCAG AAA ✓ Pass

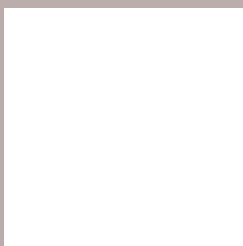
If you want to check with other color combinations, try the [Color Contrast Checker](#).

**XYZ 42.8835, 43.4305, 45.1524**

## **Background**



This preview shows how black text looks on a background with the XYZ color 42.8835, 43.4305, 45.1524.



This preview shows how white text looks on a background with the XYZ color 42.8835, 43.4305,



# Color Blindness Simulation

Color vision deficiency is a very complex topic, and I could not describe the different causes any better than Wikipedia does, so if you want to learn more, you should check out their [article about color blindness](#).

## Dichromacy



### Original Color

42.8835, 43.4305, 45.1524

### Protanopia

41.6952, 43.3804, 45.7108

### Deuteranopia

44.1657, 43.2359, 45.5527



## Tritanopia

44.3061, 43.4474, 51.9499

# Trichromacy



## Original Color

42.8835, 43.4305, 45.1524

## Protanomaly

42.2073, 43.3565, 45.6792

## Deuteranomaly

43.5916, 43.2193, 45.5798

## Tritanomaly

43.7298, 43.4917, 49.2699

# Monochromacy



## Original Color

42.8835, 43.4305, 45.1524

## Achromatopsia

41.7894, 43.9657, 47.8787

## Achromatomaly

42.3193, 43.9696, 46.8140

# CSS Examples

## Text

The CSS property to change the color of the text to XYZ 42.8835, 43.4305, 45.1524 is called "color". The color property can be set on classes, ids or directly on the HTML element.

This example shows how text in the color `rgb(187, 173, 172)` looks like.

```
.text, #text, p{  
    color:rgb(187, 173, 172)  
}
```

If you want to add a text shadow in that color use the text-shadow property, you can generate a text shadow directly with our [CSS Text Shadow Generator](#).

Here you see how black text with a 4 pixel rgb(187, 173, 172) colored shadow looks like.

```
.shadow{ text-shadow: 4px 4px 2px rgb(187, 173, 172) }
```

## Border

The CSS property to change the border of an element to XYZ 42.8835, 43.4305, 45.1524 is called "border". The border property can be set on classes, ids or directly on the HTML element.

This example shows the color as border, it can be applied via the CSS property "border" or "border-color".

```
.border, #border, table{ border:4px solid rgb(187, 173, 172) }
```



If only the border color should be changed use the property `border-color`.

```
.border{ border-color:rgb(187, 173, 172) }
```

If you want to add a box shadow in that color use:

Here you see how a box with a 4 pixel `rgb(187, 173, 172)` colored shadow looks like.

```
.boxshadow{ -moz-box-shadow:4px 4px 4px  
4px rgb(187, 173, 172); -webkit-box-  
shadow:4px 4px 4px 4px rgb(187, 173, 172);  
box-shadow:4px 4px 4px 4px rgb(187, 173,  
172) }
```

# Background

The CSS property to change the background color of an element to XYZ 42.8835, 43.4305, 45.1524 is called "background". The background property can be set on classes, ids or directly on the HTML element.

```
.background, #background, body{  
background: rgb(187, 173, 172) }
```

If only the background color should be changed can be used:

```
.background{ background-color: rgb(187,  
173, 172) }
```

This example shows the color as background, it is applied via the CSS property "background".

To optimize and compress your CSS code, you can use our [online CSS compressor and optimizer](#) based on csstidy. If you want to create a linear or radial gradient as background or border, check our [CSS Gradient Generator](#).

Hey! You found this booklet interesting? Support Converting Colors with the new Membership Option!

The pro membership hides all ads, plus gives you double the colors in the color bucket, and more awesome pro features!

**[Learn more, Memberships starting at \\$2.50/m!](#)**

**Follow me  
on Twitter!**

@ConvertingColor