

Converting Colors

XYZ(42.9407, 42.0226, 40.0016)

Have a look what the booklet for
XYZ(42.9407, 42.0226, 40.0016)
contains.

XYZ(42.8460, 41.8482, 40.0017)	3
<i>Conversions</i>	4
<i>Details</i>	6
<i>Harmonies</i>	12
<i>Previews</i>	24
<i>Color Blindness Simulation</i>	28
<i>CSS Examples</i>	31

Color

**XYZ(42.8460, 41.8482,
40.0017)**

Conversions

Conversions Part 1

Format	Color
Hex	C3A7A2
RGB	195, 167, 162
RGB Percent	76%, 65%, 64%
CMY	0.2353, 0.3451, 0.3647
CMYK	0.00, 0.14, 0.17, 0.24
HSL	9°, 22%, 70%
HSV	9°, 17%, 76%
XYZ	42.8460, 41.8482, 40.0017
YIQ	174.8020, 18.2930, 4.3810

Conversions

Conversions Part 2

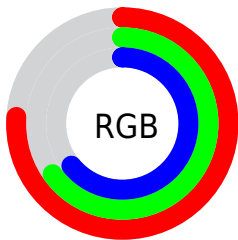
Format	Color
R_{YB}	195, 168, 162
Decimal	12822434
CIE Lab	70.77, 9.39, 6.36
CIE LCh	71, 11.335, 34.101
Yxy	41.8482, 0.3436, 0.3356
Android (android.graphics.Color)	4291012514 (0xFFC3A7A2)
YUV	174.8020, -6.3114, 17.7136
Hunter-Lab	64.6902, 5.0174, 8.6207

Details

The XYZ color **42.8460, 41.8482, 40.0017** is a light color, and the websafe version is hex **CC9999**. A complement of this color would be **43.1637, 48.4473, 58.7064**, and the grayscale version is **40.6711, 42.7892, 46.5974**.

A 20% lighter version of the original color is **78.7905, 77.9478, 76.5384**, and **19.9297, 19.0500, 17.3785** is the 20% darker color. If you saturate the color by 10%, you get **38.4062, 35.5306, 30.6228**, and if you desaturate by 10%, it is **47.9447, 49.0526, 50.9274**.

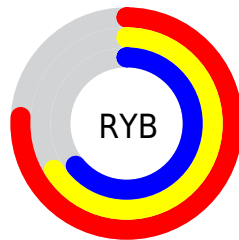
Distribution



Red (76%)

Green (65%)

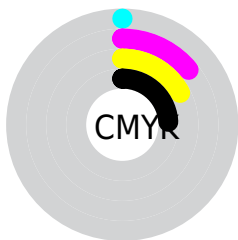
Blue (64%)



Red (76%)

Yellow (66%)

Blue (64%)

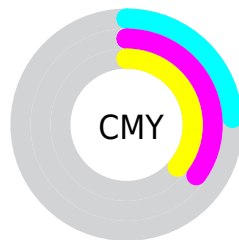


Cyan (0%)

Magenta (14%)

Yellow (17%)

Black (24%)



Cyan (24%)


Magenta (35%)


Yellow (36%)

Brightness & Saturation Gradients


These gradients show how the XYZ color 42.8460, 41.8482, 40.0017 changes by changing the brightness by 10 percent. The first figure shows a shift by +10% for each color and the second figure -10%.


Similar to the brightness gradients but the following saturation gradients show a change of the XYZ color 42.8460, 41.8482, 40.0017 by changing the saturation by 10% instead.


 42.8460, 41.8482,
40.0017


 42.8460, 41.8482,
40.0017


348.9103,
353.8533, 361.6830

 29.9583, 28.9824,
27.2261


 78.7356, 77.9698,
76.4032

 19.9549, 19.0675,
17.5091


 102.4682,
101.9945, 100.8662

 12.4703, 11.7191,
10.4324


130.5464,
130.5076, 130.0620

 7.1393, 6.5527,
5.5772

163.3357,
163.8935, 164.4093

 3.5965, 3.1840,
2.5252

201.2014,
202.5366, 204.3264

 1.4765, 1.2285,
0.8534

244.5088,

 0.3097, 0.0848,

246.8214, 250.2321

0.0000

293.6233,
297.1321, 302.5448

■ 0.0000, 0.0000,
0.0000

■ 42.8460, 41.8482,
40.0017

■ 42.8460, 41.8482,
40.0017

■ 38.4062, 35.5306,
30.6228

■ 47.9447, 49.0526,
50.9274

■ 34.5949, 30.0599,
22.7180

■ 53.7241, 57.1702,
63.4626

■ 31.3843, 25.4017,
16.2131

■ 60.2095, 66.2337,
77.6699

■ 28.7435, 21.5170,
11.0260

■ 67.4236, 76.2723,
93.6077

■ 26.6383, 18.3636,
7.0661

■ 74.6549, 87.0204,
107.4696

■ 25.0312, 15.8951,
4.2315

■ 76.3158, 90.3422,
108.0233

■ 23.8794, 14.0599,
2.4035

■ 23.1297, 12.7974,
1.4234

■ 22.9592, 12.5090,
1.2044

Harmonies

Analogous

The Analogous color harmony consists of three colors that are next to each other on the color wheel.



43.4930, 41.8482, 44.8289



42.8460, 41.8482, 40.0017



41.3762, 41.8482, 36.8688

Triad

The Triadic color harmony groups three colors that are evenly spaced from another and form a triangle on the color wheel.



42.8460, 41.8482, 40.0017



36.6100, 41.8482, 41.1895



40.0347, 41.8482, 56.6973

Complementary

The Complementary color scheme is a pair of colors which are on the opposite of each other on the color wheel.



42.8460, 41.8482, 40.0017



43.1637, 48.4473, 58.7064

Split Complementary

Split-complementary colors differ from the complementary color scheme. The scheme consists of three colors, the original color and two neighbors of the complement color.



38.2166, 41.8482, 55.5325



42.8460, 41.8482, 40.0017



36.2761, 41.8482, 46.3103

Square

The Square scheme is like the rectangle color scheme, but the four colors are evenly spaced on the color wheel.



42.8460, 41.8482, 40.0017



37.7821, 41.8482, 37.5157



36.8552, 41.8482, 51.6228



41.8378, 41.8482, 54.6917

Rectangle

The Rectangle color scheme consists of four colors that form a rectangle on the color wheel.



42.8460, 41.8482, 40.0017



40.1483, 41.8482, 36.0197



36.8552, 41.8482, 51.6228



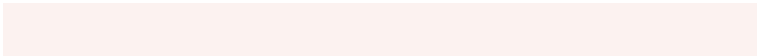
39.4049, 41.8482, 56.6645

Sweetspot

The Sweet Spot groups the original color and five complimentary colors.



42.8471, 41.8501, 40.0026



87.6858, 90.4110, 95.1333



44.7262, 41.1632, 54.3322



19.0467, 19.5801, 20.4971



0.0000, 0.0000, 0.0000



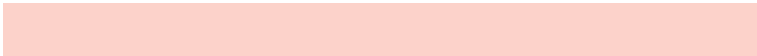
20.3446, 21.4041, 23.3091

Same Dimension

The Same Dimension uses a secret algorithm to generate beautiful new colors.



42.8471, 41.8501, 40.0026



73.9158, 70.9456, 65.6504



46.0542, 48.2641, 41.0716



10.1938, 10.3189, 10.5164



14.9616, 8.2089, 0.7959



0.6866, 0.4349, 0.0478

Inverse Universe

The Inverse Universe completely reimagines the original color for something new.



43.1637, 48.4473, 58.7064



74.5786, 84.7882, 104.9048



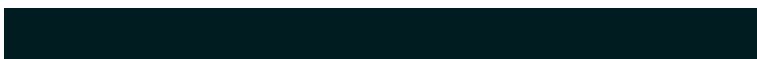
39.8004, 41.7206, 57.5853



10.2342, 11.1598, 12.8995



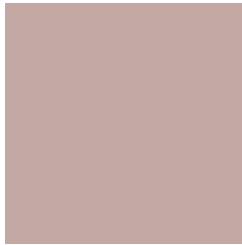
15.2474, 20.2513, 36.6619



0.6948, 0.9470, 1.5961

Previews

White Background



This preview shows how the XYZ color 42.8460, 41.8482, 40.0017 looks on a white background.

Color Contrast Check

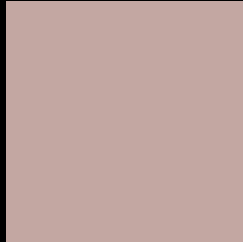
Large Text (above 18pt) WCAG AA × Fail

Any Text WCAG AA × Fail

Large Text (above 18pt) WCAG AAA × Fail

Any Text WCAG AAA × Fail

Black Background



This preview shows how the XYZ color 42.8460, 41.8482, 40.0017 looks on a black background.

Color Contrast Check

Large Text (above 18pt) WCAG AA ✓ Pass

Any Text WCAG AA ✓ Pass

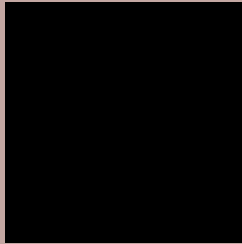
Large Text (above 18pt) WCAG AAA ✓ Pass

Any Text WCAG AAA ✓ Pass

If you want to check with other color combinations, try the [Color Contrast Checker](#).

XYZ 42.8460, 41.8482, 40.0017

Background



This preview shows how black text looks on a background with the XYZ color 42.8460, 41.8482, 40.0017.



This preview shows how white text looks on a background with the XYZ color 42.8460, 41.8482,

Color Blindness Simulation

Color vision deficiency is a very complex topic, and I could not describe the different causes any better than Wikipedia does, so if you want to learn more, you should check out their [article about color blindness](#).

Dichromacy



Original Color

42.8460, 41.8482, 40.0017

Protanopia

40.0952, 42.0687, 41.6041

Deuteranopia

42.5884, 41.7154, 39.9896



Tritanopia

44.4169, 41.9549, 47.3521

Trichromacy



Original Color

42.8460, 41.8482, 40.0017

Protanomaly

41.0309, 41.9965, 41.0655

Deuteranomaly

42.5884, 41.7154, 39.9896

Tritanomaly

43.8476, 41.9868, 44.8230

Monochromacy



Original Color

42.8460, 41.8482, 40.0017

Achromatopsia

40.7470, 42.8690, 46.6844

Achromatomaly

41.2996, 42.3524, 44.0283

CSS Examples

Text

The CSS property to change the color of the text to XYZ 42.8460, 41.8482, 40.0017 is called "color". The color property can be set on classes, ids or directly on the HTML element.

This example shows how text in the color `rgb(195, 167, 162)` looks like.

```
.text, #text, p{  
    color:rgb(195, 167, 162)  
}
```

If you want to add a text shadow in that color use the text-shadow property, you can generate a text shadow directly with our [CSS Text Shadow Generator](#).

Here you see how black text with a 4 pixel rgb(195, 167, 162) colored shadow looks like.

```
.shadow{ text-shadow: 4px 4px 2px rgb(195, 167, 162) }
```

Border

The CSS property to change the border of an element to XYZ 42.8460, 41.8482, 40.0017 is called "border". The border property can be set on classes, ids or directly on the HTML element.

This example shows the color as border, it can be applied via the CSS property "border" or "border-color".

```
.border, #border, table{ border:4px solid rgb(195, 167, 162) }
```


If only the border color should be changed use the property `border-color`.

```
.border{ border-color:rgb(195, 167, 162) }
```

If you want to add a box shadow in that color use:

Here you see how a box with a 4 pixel `rgb(195, 167, 162)` colored shadow looks like.

```
.boxshadow{ -moz-box-shadow:4px 4px 4px  
4px rgb(195, 167, 162); -webkit-box-  
shadow:4px 4px 4px 4px rgb(195, 167, 162);  
box-shadow:4px 4px 4px 4px rgb(195, 167,  
162) }
```

Background

The CSS property to change the background color of an element to XYZ 42.8460, 41.8482, 40.0017 is called "background". The background property can be set on classes, ids or directly on the HTML element.

```
.background, #background, body{  
background: rgb(195, 167, 162) }
```

If only the background color should be changed can be used:

```
.background{ background-color: rgb(195,  
167, 162) }
```

This example shows the color as background, it is applied via the CSS property "background".

To optimize and compress your CSS code, you can use our [online CSS compressor and optimizer](#) based on csstidy. If you want to create a linear or radial gradient as background or border, check our [CSS Gradient Generator](#).

Hey! You found this booklet interesting? Support Converting Colors with the new Membership Option!

The pro membership hides all ads, plus gives you double the colors in the color bucket, and more awesome pro features!

[Learn more, Memberships starting at \\$2.50/m!](#)

**Follow me
on Twitter!**

@ConvertingColor