

Converting Colors

XYZ(42.9484, 40.0176, 36.0549)

Have a look what the booklet for
XYZ(42.9484, 40.0176, 36.0549)
contains.

| | |
|------------------------------------------------|----|
| XYZ(43.0321, 40.1712, 36.0576) | 3 |
| <i>Conversions</i> | 4 |
| <i>Details</i> | 6 |
| <i>Harmonies</i> | 12 |
| <i>Previews</i> | 24 |
| <i>Color Blindness Simulation</i> | 28 |
| <i>CSS Examples</i> | 31 |

Color

**XYZ(43.0321, 40.1712,
36.0576)**

Conversions

Conversions Part 1

| Format | Color |
|-------------|---------------------------|
| Hex | CBA09A |
| RGB | 203, 160, 154 |
| RGB Percent | 80%, 63%, 60% |
| CMY | 0.2039, 0.3725, 0.3961 |
| CMYK | 0.00, 0.21, 0.24, 0.20 |
| HSL | 7°, 32%, 70% |
| HSV | 7°, 24%, 80% |
| XYZ | 43.0321, 40.1712, 36.0576 |
| YIQ | 172.1730, 27.5540, 7.2500 |

Conversions

Conversions Part 2

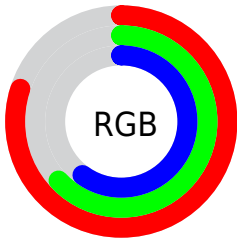
| Format | Color |
|-------------------------------------|-------------------------------|
| R _Y B | 203, 161, 154 |
| Decimal | 13344922 |
| CIE Lab | 69.59, 15.00, 9.20 |
| CIE LCh | 70, 17.601, 31.518 |
| Yxy | 40.1712, 0.3608, 0.3368 |
| Android (android.graphics.Color) | 4291535002 (0xFFCBA09A) |
| YUV | 172.1730, -8.9593, 27.0353 |
| Hunter-Lab | 63.3808, 10.2755, 10.6362 |

Details

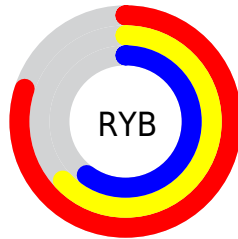
The XYZ color **43.0321, 40.1712, 36.0576** is a light color, and the websafe version is hex **CC9999**. A complement of this color would be **44.0716, 51.1128, 64.0430**, and the grayscale version is **39.3353, 41.3838, 45.0670**.

A 20% lighter version of the original color is **76.9256, 74.4149, 69.9836**, and **20.0235, 18.0003, 15.2510** is the 20% darker color. If you saturate the color by 10%, you get **38.6126, 33.8128, 26.9365**, and if you desaturate by 10%, it is **48.1822, 47.5326, 46.8337**.

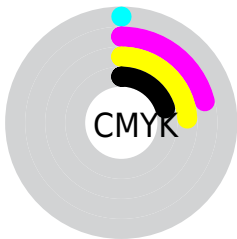
Distribution



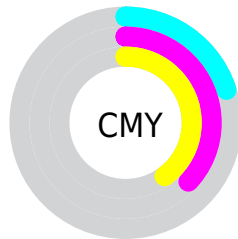
- Red (80%)
- Green (63%)
- Blue (60%)



- Red (80%)
- Yellow (63%)
- Blue (60%)



- Cyan (0%)
- Magenta (21%)
- Yellow (24%)
- Black (20%)





- Cyan (20%)
- Magenta (37%)
- Yellow (40%)

Brightness & Saturation Gradients


These gradients show how the XYZ color 43.0321, 40.1712, 36.0576 changes by changing the brightness by 10 percent. The first figure shows a shift by +10% for each color and the second figure -10%.

Similar to the brightness gradients but the following saturation gradients show a change of the XYZ color 43.0321, 40.1712, 36.0576 by changing the saturation by 10% instead.


 43.0321, 40.1712,
36.0576

 43.0321, 40.1712,
36.0576


349.6630,
346.8446, 344.2573

 30.1049, 27.6721,
24.1886


 79.0147, 75.4241,
70.2910

 20.0667, 18.0786,
15.2601


 102.8009, 98.9467,
93.4925

 12.5521, 11.0064,
8.8535


130.9374,
126.9126, 121.3087

 7.1957, 6.0712,
4.5502

163.7896,
159.7061, 154.1579

 3.6322, 2.8884,
1.9318

201.7230,
197.7116, 192.4589

 1.4962, 1.0737,
0.5129

245.1027,

 0.3233, 0.0000,

241.3137, 236.6301

0.0000

294.2943,
290.8965, 287.0900

0.0000, 0.0000,
0.0000

43.0321, 40.1712,
36.0576

43.0321, 40.1712,
36.0576

38.6126, 33.8128,
26.9365

48.1822, 47.5326,
46.8337

34.8873, 28.4085,
19.3861

54.0906, 55.9319,
59.3387

31.8216, 23.9140,
13.3181

60.7875, 65.4094,
73.6449

29.3767, 20.2789,
8.6347

68.3007, 76.0014,
89.8197

27.5094, 17.4481,
5.2262

76.5754, 87.7101,
107.5015

■ 26.1711, 15.3599,
2.9663

■ 78.4387, 91.4365,
108.1226

■ 25.3048, 13.9436,
1.7023

■ 24.9736, 13.3864,
1.2676

Harmonies

Analogous

The Analogous color harmony consists of three colors that are next to each other on the color wheel.



43.9090, 40.1712, 43.3264



43.0321, 40.1712, 36.0576



40.8473, 40.1712, 31.3751

Triad

The Triadic color harmony groups three colors that are evenly spaced from another and form a triangle on the color wheel.



43.0321, 40.1712, 36.0576



33.5768, 40.1712, 36.6926



38.3265, 40.1712, 61.3241

Complementary

The Complementary color scheme is a pair of colors which are on the opposite of each other on the color wheel.



43.0321, 40.1712, 36.0576



44.0716, 51.1128, 64.0430

Split Complementary

Split-complementary colors differ from the complementary color scheme. The scheme consists of three colors, the original color and two neighbors of the complement color.



35.6343, 40.1712, 58.9884



43.0321, 40.1712, 36.0576



32.9751, 40.1712, 44.1555

Square

The Square scheme is like the rectangle color scheme, but the four colors are evenly spaced on the color wheel.



43.0321, 40.1712, 36.0576



35.3954, 40.1712, 31.7084



33.7099, 40.1712, 52.4419



41.1101, 40.1712, 58.4838

Rectangle

The Rectangle color scheme consists of four colors that form a rectangle on the color wheel.



43.0321, 40.1712, 36.0576



38.9933, 40.1712, 30.0145



33.7099, 40.1712, 52.4419



37.3811, 40.1712, 61.1168

Sweetspot

The Sweet Spot groups the original color and five complimentary colors.



43.0332, 40.1731, 36.0584



87.5133, 89.3138, 92.8626



46.2950, 39.8524, 58.2462



18.5990, 18.9287, 19.5956



0.0000, 0.0000, 0.0000



20.3446, 21.4041, 23.3091

Same Dimension

The Same Dimension uses a secret algorithm to generate beautiful new colors.



43.0332, 40.1731, 36.0584



68.0232, 61.4734, 52.0233



47.6472, 49.4010, 37.5964



11.3212, 11.4314, 11.6892



15.9292, 8.5913, 0.8187



0.8594, 0.5186, 0.0548

Inverse Universe

The Inverse Universe completely reimagines the original color for something new.



44.0716, 51.1128, 64.0430



70.0549, 82.9241, 106.9214



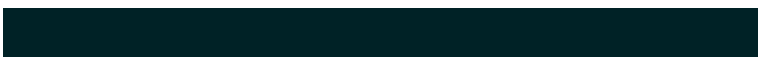
39.0084, 40.9864, 62.3553



11.4214, 12.4833, 14.3779



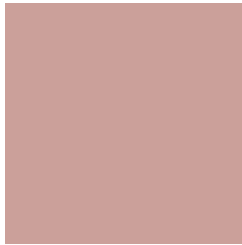
17.0528, 23.1296, 39.5220



0.9135, 1.2608, 2.0502

Previews

White Background



This preview shows how the XYZ color 43.0321, 40.1712, 36.0576 looks on a white background.

Color Contrast Check

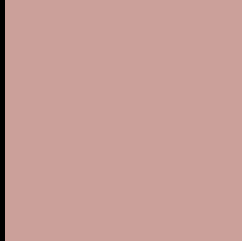
Large Text (above 18pt) WCAG AA × Fail

Any Text WCAG AA × Fail

Large Text (above 18pt) WCAG AAA × Fail

Any Text WCAG AAA × Fail

Black Background



This preview shows how the XYZ color 43.0321, 40.1712, 36.0576 looks on a black background.

Color Contrast Check

Large Text (above 18pt) WCAG AA ✓ Pass

Any Text WCAG AA ✓ Pass

Large Text (above 18pt) WCAG AAA ✓ Pass

Any Text WCAG AAA ✓ Pass

If you want to check with other color combinations, try the [Color Contrast Checker](#).

XYZ 43.0321, 40.1712, 36.0576

Background



This preview shows how black text looks on a background with the XYZ color 43.0321, 40.1712, 36.0576.



This preview shows how white text looks on a background with the XYZ color 43.0321, 40.1712,

Color Blindness Simulation

Color vision deficiency is a very complex topic, and I could not describe the different causes any better than Wikipedia does, so if you want to learn more, you should check out their [article about color blindness](#).

Dichromacy



Original Color

43.0321, 40.1712, 36.0576

Protanopia

38.5372, 40.4828, 38.5837

Deuteranopia

41.0175, 40.1883, 35.7322



Tritanopia

44.6594, 40.3351, 43.4619

Trichromacy



Original Color

43.0321, 40.1712, 36.0576

Protanomaly

39.9717, 40.1459, 37.5405

Deuteranomaly

41.8729, 40.3646, 35.7212

Tritanomaly

44.0008, 40.3140, 40.5842

Monochromacy



Original Color

43.0321, 40.1712, 36.0576

Achromatopsia

39.2122, 41.2543, 44.9259

Achromatomaly

40.3226, 40.7892, 41.3452

CSS Examples

Text

The CSS property to change the color of the text to XYZ 43.0321, 40.1712, 36.0576 is called "color". The color property can be set on classes, ids or directly on the HTML element.

This example shows how text in the color `rgb(203, 160, 154)` looks like.

```
.text, #text, p{  
    color:rgb(203, 160, 154)  
}
```

If you want to add a text shadow in that color use the text-shadow property, you can generate a text shadow directly with our [CSS Text Shadow Generator](#).

Here you see how black text with a 4 pixel rgb(203, 160, 154) colored shadow looks like.

```
.shadow{ text-shadow: 4px 4px 2px rgb(203, 160, 154) }
```

Border

The CSS property to change the border of an element to XYZ 43.0321, 40.1712, 36.0576 is called "border". The border property can be set on classes, ids or directly on the HTML element.

This example shows the color as border, it can be applied via the CSS property "border" or "border-color".

```
.border, #border, table{ border:4px solid rgb(203, 160, 154) }
```


If only the border color should be changed use the property `border-color`.

```
.border{ border-color:rgb(203, 160, 154) }
```

If you want to add a box shadow in that color use:

Here you see how a box with a 4 pixel `rgb(203, 160, 154)` colored shadow looks like.

```
.boxshadow{ -moz-box-shadow:4px 4px 4px  
4px rgb(203, 160, 154); -webkit-box-  
shadow:4px 4px 4px 4px rgb(203, 160, 154);  
box-shadow:4px 4px 4px 4px rgb(203, 160,  
154) }
```

Background

The CSS property to change the background color of an element to XYZ 43.0321, 40.1712, 36.0576 is called "background". The background property can be set on classes, ids or directly on the HTML element.

```
.background, #background, body{  
background: rgb(203, 160, 154) }
```

If only the background color should be changed can be used:

```
.background{ background-color: rgb(203,  
160, 154) }
```

This example shows the color as background, it is applied via the CSS property "background".

To optimize and compress your CSS code, you can use our [online CSS compressor and optimizer](#) based on csstidy. If you want to create a linear or radial gradient as background or border, check our [CSS Gradient Generator](#).

Hey! You found this booklet interesting? Support Converting Colors with the new Membership Option!

The pro membership hides all ads, plus gives you double the colors in the color bucket, and more awesome pro features!

[Learn more, Memberships starting at \\$2.50/m!](#)

**Follow me
on Twitter!**

@ConvertingColor