

Converting Colors

XYZ(42.9626, 39.9624, 32.2372)

Have a look what the booklet for
XYZ(42.9626, 39.9624, 32.2372)
contains.

XYZ(42.9626, 39.9624, 32.2372)	3
<i>Conversions</i>	4
<i>Details</i>	6
<i>Harmonies</i>	12
<i>Previews</i>	24
<i>Color Blindness Simulation</i>	28
<i>CSS Examples</i>	31

Color

**XYZ(42.9626, 39.9624,
32.2372)**

Conversions

Conversions Part 1

Format	Color
Hex	CE9F91
RGB	206, 159, 145
RGB Percent	81%, 62%, 57%
CMY	0.1922, 0.3765, 0.4314
CMYK	0.00, 0.23, 0.30, 0.19
HSL	14°, 38%, 69%
HSV	14°, 30%, 81%
XYZ	42.9626, 39.9624, 32.2372
YIQ	171.4570, 32.5060, 5.6100

Conversions

Conversions Part 2

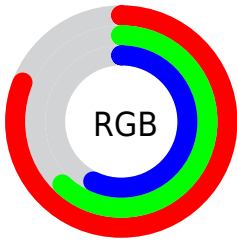
Format	Color
R _Y B	206, 163, 145
Decimal	13541265
CIE Lab	69.44, 15.44, 14.02
CIE LCh	69, 20.851, 42.235
Yxy	39.9624, 0.3731, 0.3470
Android (android.graphics.Color)	4291731345 (0xFFCE9F91)
YUV	171.4570, -13.0433, 30.2942
Hunter-Lab	63.2158, 10.6841, 14.0159

Details

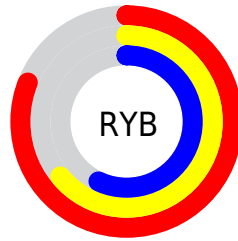
The XYZ color **42.9626, 39.9624, 32.2372** is a light color, and the websafe version is hex **CC9999**. A complement of this color would be **41.6668, 48.1739, 65.4952**, and the grayscale version is **38.9916, 41.0222, 44.6732**.

A 20% lighter version of the original color is **75.5954, 73.4767, 64.2309**, and **20.0858, 17.9209, 13.2269** is the 20% darker color. If you saturate the color by 10%, you get **38.9599, 34.2725, 23.7639**, and if you desaturate by 10%, it is **47.6059, 46.4721, 42.3458**.

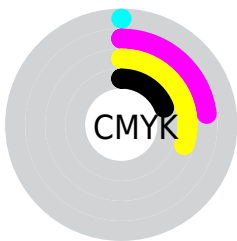
Distribution



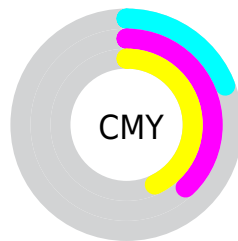
- Red (81%)
- Green (62%)
- Blue (57%)



- Red (81%)
- Yellow (64%)
- Blue (57%)



- Cyan (0%)
- Magenta (23%)
- Yellow (30%)
- Black (19%)





- Cyan (19%)
- Magenta (38%)
- Yellow (43%)

Brightness & Saturation Gradients


These gradients show how the XYZ color 42.9626, 39.9624, 32.2372 changes by changing the brightness by 10 percent. The first figure shows a shift by +10% for each color and the second figure -10%.


Similar to the brightness gradients but the following saturation gradients show a change of the XYZ color 42.9626, 39.9624, 32.2372 by changing the saturation by 10% instead.


 42.9626, 39.9624,
32.2372

 42.9626, 39.9624,
32.2372


349.3821,
345.9651, 326.7243

 30.0502, 27.5092,
21.2764


 78.9105, 75.1063,
64.2850

 20.0249, 17.9560,
13.1330


 102.6766, 98.5657,
86.2091

 12.5215, 10.9184,
7.3884


130.7914,
126.4628, 112.6247

 7.1746, 6.0120,
3.6241

163.6202,
159.1817, 143.9503

 3.6189, 2.8524,
1.4215

201.5283,
197.1071, 180.6046

 1.4889, 1.0552,
0.1584

244.8810,

 0.3182, 0.0000,

240.6231, 223.0060

0.0000

294.0438,
290.1143, 271.5730

■ 0.0000, 0.0000,
0.0000

■ 42.9626, 39.9624,
32.2372

■ 42.9626, 39.9624,
32.2372

■ 38.9599, 34.2725,
23.7639

■ 47.6059, 46.4721,
42.3458

■ 35.5658, 29.3642,
16.8372

■ 52.9137, 53.8268,
54.1674

■ 32.7502, 25.2043,
11.3632

■ 58.9122, 62.0577,
67.7776

■ 30.4792, 21.7551,
7.2371

■ 65.6255, 71.1924,
83.2465

■ 28.7148, 18.9754,
4.3398

■ 73.0764, 81.2577,
100.6409

■ 27.4138, 16.8196,
2.5307

■ 79.0185, 91.3715,
108.0795

■ 26.5114, 15.2301,
1.5654

■ 79.2637, 91.8619,
108.1612

■ 26.4820, 15.1784,
1.5340

Harmonies

Analogous

The Analogous color harmony consists of three colors that are next to each other on the color wheel.



44.6431, 39.9624, 39.7130



42.9626, 39.9624, 32.2372



39.9856, 39.9624, 28.1823

Triad

The Triadic color harmony groups three colors that are evenly spaced from another and form a triangle on the color wheel.



42.9626, 39.9624, 32.2372



32.1647, 39.9624, 38.1149



39.3667, 39.9624, 64.1815

Complementary

The Complementary color scheme is a pair of colors which are on the opposite of each other on the color wheel.



42.9626, 39.9624, 32.2372



41.6668, 48.1739, 65.4952

Split Complementary

Split-complementary colors differ from the complementary color scheme. The scheme consists of three colors, the original color and two neighbors of the complement color.



36.0485, 39.9624, 63.5855



42.9626, 39.9624, 32.2372



32.0207, 39.9624, 47.5464

Square

The Square scheme is like the rectangle color scheme, but the four colors are evenly spaced on the color wheel.



42.9626, 39.9624, 32.2372



33.8096, 39.9624, 31.2161



33.4040, 39.9624, 57.1504



42.4866, 39.9624, 58.6755

Rectangle

The Rectangle color scheme consists of four colors that form a rectangle on the color wheel.



42.9626, 39.9624, 32.2372



37.7320, 39.9624, 27.5382



33.4040, 39.9624, 57.1504



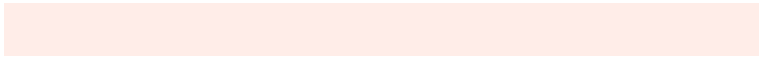
38.2352, 39.9624, 64.7085

Sweetspot

The Sweet Spot groups the original color and five complimentary colors.



42.9637, 39.9643, 32.2380



86.1891, 87.8421, 88.7937



45.1808, 37.2137, 55.1275



18.1603, 18.4051, 18.3587



0.0000, 0.0000, 0.0000



20.3446, 21.4041, 23.3091

Same Dimension

The Same Dimension uses a secret algorithm to generate beautiful new colors.



42.9637, 39.9643, 32.2380



65.0665, 58.3068, 42.5693



48.7015, 51.4399, 34.1506



11.4178, 11.6246, 11.7214



16.3683, 9.4695, 0.9651



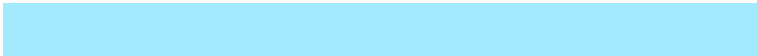
0.9039, 0.6075, 0.0696

Inverse Universe

The Inverse Universe completely reimagines the original color for something new.



41.6668, 48.1739, 65.4952



62.5967, 73.8306, 105.5593



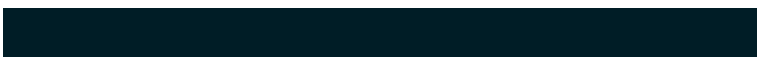
35.7884, 36.4171, 63.5357



11.3164, 12.2733, 14.3429



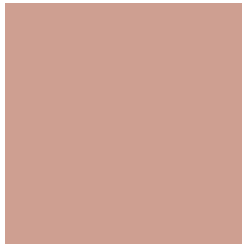
14.5399, 18.1037, 38.6843



0.8048, 1.0434, 2.0139

Previews

White Background



This preview shows how the XYZ color 42.9626, 39.9624, 32.2372 looks on a white background.

Color Contrast Check

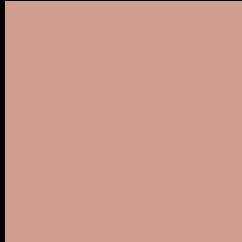
Large Text (above 18pt) WCAG AA × Fail

Any Text WCAG AA × Fail

Large Text (above 18pt) WCAG AAA × Fail

Any Text WCAG AAA × Fail

Black Background



This preview shows how the XYZ color 42.9626, 39.9624, 32.2372 looks on a black background.

Color Contrast Check

Large Text (above 18pt) WCAG AA ✓ Pass

Any Text WCAG AA ✓ Pass

Large Text (above 18pt) WCAG AAA ✓ Pass

Any Text WCAG AAA ✓ Pass

If you want to check with other color combinations, try the [Color Contrast Checker](#).

XYZ 42.9626, 39.9624, 32.2372

Background



This preview shows how black text looks on a background with the XYZ color 42.9626, 39.9624, 32.2372.



This preview shows how white text looks on a background with the XYZ color 42.9626, 39.9624,

Color Blindness Simulation

Color vision deficiency is a very complex topic, and I could not describe the different causes any better than Wikipedia does, so if you want to learn more, you should check out their [article about color blindness](#).

Dichromacy



Original Color

42.9626, 39.9624, 32.2372

Protanopia

37.8244, 39.9251, 34.5669

Deuteranopia

40.6369, 39.8101, 31.9279



Tritanopia

44.9688, 40.0140, 42.3991

Trichromacy



Original Color

42.9626, 39.9624, 32.2372

Protanomaly

39.5395, 39.7398, 33.6036

Deuteranomaly

41.5076, 39.9964, 31.9179

Tritanomaly

44.1343, 39.9174, 38.6364

Monochromacy



Original Color

42.9626, 39.9624, 32.2372

Achromatopsia

38.7082, 40.7240, 44.3485

Achromatomaly

40.1075, 40.4364, 39.8735

CSS Examples

Text

The CSS property to change the color of the text to XYZ 42.9626, 39.9624, 32.2372 is called "color". The color property can be set on classes, ids or directly on the HTML element.

This example shows how text in the color `rgb(206, 159, 145)` looks like.

```
.text, #text, p{  
    color:rgb(206, 159, 145)  
}
```

If you want to add a text shadow in that color use the text-shadow property, you can generate a text shadow directly with our [CSS Text Shadow Generator](#).

Here you see how black text with a 4 pixel rgb(206, 159, 145) colored shadow looks like.

```
.shadow{ text-shadow: 4px 4px 2px rgb(206, 159, 145) }
```

Border

The CSS property to change the border of an element to XYZ 42.9626, 39.9624, 32.2372 is called "border". The border property can be set on classes, ids or directly on the HTML element.

This example shows the color as border, it can be applied via the CSS property "border" or "border-color".

```
.border, #border, table{ border:4px solid rgb(206, 159, 145) }
```


If only the border color should be changed use the property `border-color`.

```
.border{ border-color:rgb(206, 159, 145) }
```

If you want to add a box shadow in that color use:

Here you see how a box with a 4 pixel `rgb(206, 159, 145)` colored shadow looks like.

```
.boxshadow{ -moz-box-shadow:4px 4px 4px  
4px rgb(206, 159, 145); -webkit-box-  
shadow:4px 4px 4px 4px rgb(206, 159, 145);  
box-shadow:4px 4px 4px 4px rgb(206, 159,  
145) }
```

Background

The CSS property to change the background color of an element to XYZ 42.9626, 39.9624, 32.2372 is called "background". The background property can be set on classes, ids or directly on the HTML element.

```
.background, #background, body{  
background: rgb(206, 159, 145) }
```

If only the background color should be changed can be used:

```
.background{ background-color: rgb(206,  
159, 145) }
```

This example shows the color as background, it is applied via the CSS property "background".

To optimize and compress your CSS code, you can use our [online CSS compressor and optimizer](#) based on csstidy. If you want to create a linear or radial gradient as background or border, check our [CSS Gradient Generator](#).

Hey! You found this booklet interesting? Support Converting Colors with the new Membership Option!

The pro membership hides all ads, plus gives you double the colors in the color bucket, and more awesome pro features!

[Learn more, Memberships starting at \\$2.50/m!](#)

**Follow me
on Twitter!**

@ConvertingColor