

Converting Colors

XYZ(43.0292, 39.8486, 37.4611)

Have a look what the booklet for
XYZ(43.0292, 39.8486, 37.4611)
contains.

XYZ(43.1125, 39.9271, 37.3327)	3
<i>Conversions</i>	4
<i>Details</i>	6
<i>Harmonies</i>	12
<i>Previews</i>	24
<i>Color Blindness Simulation</i>	28
<i>CSS Examples</i>	31

Color

**XYZ(43.1125, 39.9271,
37.3327)**

Conversions

Conversions Part 1

Format	Color
Hex	CB9F9D
RGB	203, 159, 157
RGB Percent	80%, 62%, 62%
CMY	0.2039, 0.3765, 0.3843
CMYK	0.00, 0.22, 0.23, 0.20
HSL	3°, 31%, 71%
HSV	3°, 23%, 80%
XYZ	43.1125, 39.9271, 37.3327
YIQ	171.9280, 26.8660, 8.7060

Conversions

Conversions Part 2

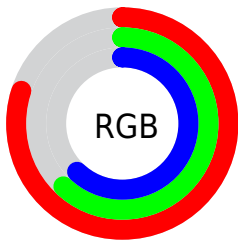
Format	Color
R _Y B	203, 159, 157
Decimal	13344669
CIE Lab	69.42, 15.99, 7.29
CIE LCh	69, 17.575, 24.504
Yxy	39.9271, 0.3582, 0.3317
Android (android.graphics.Color)	4291534749 (0xFFC9B9F9D)
YUV	171.9280, -7.3595, 27.2501
Hunter-Lab	63.1879, 11.2100, 9.2018

Details

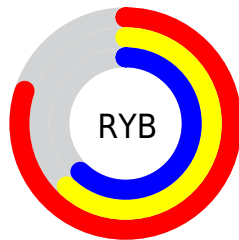
The XYZ color **43.1125, 39.9271, 37.3327** is a light color, and the websafe version is hex **CC9999**. A complement of this color would be **45.5702, 53.2516, 64.3769**, and the grayscale version is **39.2037, 41.2453, 44.9162**.

A 20% lighter version of the original color is **77.1702, 74.1066, 72.5240**, and **20.0720, 17.8519, 16.0235** is the 20% darker color. If you saturate the color by 10%, you get **38.4408, 33.1305, 27.9234**, and if you desaturate by 10%, it is **48.5988, 47.8914, 48.4351**.

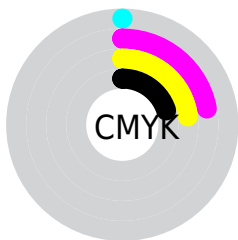
Distribution



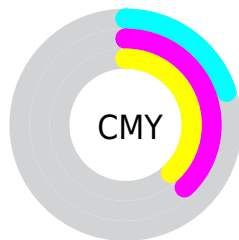
- Red (80%)
- Green (62%)
- Blue (62%)



- Red (80%)
- Yellow (62%)
- Blue (62%)



- Cyan (0%)
- Magenta (22%)
- Yellow (23%)
- Black (20%)





- Cyan (20%)
- Magenta (38%)
- Yellow (38%)

Brightness & Saturation Gradients


These gradients show how the XYZ color 43.1125, 39.9271, 37.3327 changes by changing the brightness by 10 percent. The first figure shows a shift by +10% for each color and the second figure -10%.


Similar to the brightness gradients but the following saturation gradients show a change of the XYZ color 43.1125, 39.9271, 37.3327 by changing the saturation by 10% instead.


 43.1125, 39.9271,
37.3327

 43.1125, 39.9271,
37.3327


349.9879,
345.8162, 349.9607

 30.1683, 27.4817,
25.1674


 79.1353, 75.0525,
72.2762

 20.1151, 17.9353,
15.9817

 102.9445, 98.5013,
95.8915

 12.5875, 10.9036,
9.3570

131.1062,
126.3867, 124.1605

 7.2201, 6.0020,
4.8748

163.9856,
159.0930, 157.5018

 3.6477, 2.8463,
2.1165

201.9481,
197.0048, 196.3340

 1.5048, 1.0520,
0.6256

245.3591,

 0.3291, 0.0000,

240.5063, 241.0754

0.0000

294.5839,
289.9820, 292.1448

■ 0.0000, 0.0000,
0.0000

■ 43.1125, 39.9271,
37.3327

■ 43.1125, 39.9271,
37.3327

■ 38.4408, 33.1305,
27.9234

■ 48.5988, 47.8914,
48.4351

■ 34.5418, 27.4416,
20.1218

■ 54.9325, 57.0688,
61.3053

■ 31.3749, 22.8034,
13.8386

■ 62.1485, 67.5091,
76.0169

■ 28.8942, 19.1515,
8.9750

■ 70.2789, 79.2576,
92.6382

■ 27.0490, 16.4145,
5.4204

■ 78.4387, 91.4365,
108.1226

■ 25.7812, 14.5115,
3.0480

■ 25.0225, 13.3473,
1.7057

■ 24.7247, 12.8885,
1.1846

Harmonies

Analogous

The Analogous color harmony consists of three colors that are next to each other on the color wheel.



43.6202, 39.9271, 44.9816



43.1125, 39.9271, 37.3327



41.1933, 39.9271, 31.9934

Triad

The Triadic color harmony groups three colors that are evenly spaced from another and form a triangle on the color wheel.



43.1125, 39.9271, 37.3327



33.6947, 39.9271, 35.0483



37.4314, 39.9271, 60.8797

Complementary

The Complementary color scheme is a pair of colors which are on the opposite of each other on the color wheel.



43.1125, 39.9271, 37.3327



45.5702, 53.2516, 64.3769

Split Complementary

Split-complementary colors differ from the complementary color scheme. The scheme consists of three colors, the original color and two neighbors of the complement color.



34.8806, 39.9271, 57.4166



43.1125, 39.9271, 37.3327



32.7929, 39.9271, 42.0001

Square

The Square scheme is like the rectangle color scheme, but the four colors are evenly spaced on the color wheel.



43.1125, 39.9271, 37.3327



35.7398, 39.9271, 30.7937



33.2161, 39.9271, 50.2540



40.2485, 39.9271, 59.2297

Rectangle

The Rectangle color scheme consists of four colors that form a rectangle on the color wheel.



43.1125, 39.9271, 37.3327



39.4201, 39.9271, 30.1341



33.2161, 39.9271, 50.2540



36.5160, 39.9271, 60.2632

Sweetspot

The Sweet Spot groups the original color and five complimentary colors.



43.1136, 39.9289, 37.3335



87.1015, 88.4901, 92.7253



47.2835, 41.0499, 60.9781



18.5040, 18.7387, 19.5639



0.0000, 0.0000, 0.0000



20.3446, 21.4041, 23.3091

Same Dimension

The Same Dimension uses a secret algorithm to generate beautiful new colors.



43.1136, 39.9289, 37.3335



68.3487, 61.2711, 54.7622



47.3472, 48.3962, 38.7447



11.2509, 11.2907, 11.6658



15.7519, 8.2368, 0.7596



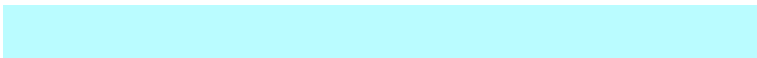
0.8267, 0.4530, 0.0439

Inverse Universe

The Inverse Universe completely reimagines the original color for something new.



45.5702, 53.2516, 64.3769



73.1467, 87.2990, 107.6029



40.6979, 43.5071, 62.7528



11.4998, 12.6400, 14.4040



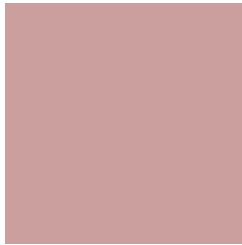
19.1773, 27.3786, 40.2301



1.0026, 1.4389, 2.0798

Previews

White Background



This preview shows how the XYZ color 43.1125, 39.9271, 37.3327 looks on a white background.

Color Contrast Check

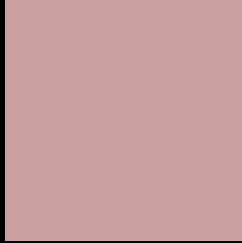
Large Text (above 18pt) WCAG AA × Fail

Any Text WCAG AA × Fail

Large Text (above 18pt) WCAG AAA × Fail

Any Text WCAG AAA × Fail

Black Background



This preview shows how the XYZ color 43.1125, 39.9271, 37.3327 looks on a black background.

Color Contrast Check

Large Text (above 18pt) WCAG AA ✓ Pass

Any Text WCAG AA ✓ Pass

Large Text (above 18pt) WCAG AAA ✓ Pass

Any Text WCAG AAA ✓ Pass

If you want to check with other color combinations, try the [Color Contrast Checker](#).

XYZ 43.1125, 39.9271, 37.3327

Background



This preview shows how black text looks on a background with the XYZ color 43.1125, 39.9271, 37.3327.



This preview shows how white text looks on a background with the XYZ color 43.1125, 39.9271,

37.3327.

Color Blindness Simulation

Color vision deficiency is a very complex topic, and I could not describe the different causes any better than Wikipedia does, so if you want to learn more, you should check out their [article about color blindness](#).

Dichromacy



Original Color

43.1125, 39.9271, 37.3327

Protanopia

38.3888, 40.0985, 39.8989

Deuteranopia

40.7621, 40.0276, 37.0302



Tritanopia

44.1202, 39.8159, 42.8960

Trichromacy



Original Color

43.1125, 39.9271, 37.3327

Protanomaly

39.8079, 39.7626, 38.8346

Deuteranomaly

41.4268, 39.8431, 36.9595

Tritanomaly

43.9202, 40.0077, 41.0047

Monochromacy



Original Color

43.1125, 39.9271, 37.3327

Achromatopsia

39.2122, 41.2543, 44.9259

Achromatomaly

40.3222, 40.4947, 42.2503

CSS Examples

Text

The CSS property to change the color of the text to XYZ 43.1125, 39.9271, 37.3327 is called "color". The color property can be set on classes, ids or directly on the HTML element.

This example shows how text in the color `rgb(203, 159, 157)` looks like.

```
.text, #text, p{  
    color:rgb(203, 159, 157)  
}
```

If you want to add a text shadow in that color use the text-shadow property, you can generate a text shadow directly with our [CSS Text Shadow Generator](#).

Here you see how black text with a 4 pixel rgb(203, 159, 157) colored shadow looks like.

```
.shadow{ text-shadow: 4px 4px 2px rgb(203, 159, 157) }
```

Border

The CSS property to change the border of an element to XYZ 43.1125, 39.9271, 37.3327 is called "border". The border property can be set on classes, ids or directly on the HTML element.

This example shows the color as border, it can be applied via the CSS property "border" or "border-color".

```
.border, #border, table{ border:4px solid rgb(203, 159, 157) }
```


If only the border color should be changed use the property `border-color`.

```
.border{ border-color:rgb(203, 159, 157) }
```

If you want to add a box shadow in that color use:

Here you see how a box with a 4 pixel `rgb(203, 159, 157)` colored shadow looks like.

```
.boxshadow{ -moz-box-shadow:4px 4px 4px  
4px rgb(203, 159, 157); -webkit-box-  
shadow:4px 4px 4px 4px rgb(203, 159, 157);  
box-shadow:4px 4px 4px 4px rgb(203, 159,  
157) }
```

Background

The CSS property to change the background color of an element to XYZ 43.1125, 39.9271, 37.3327 is called "background". The background property can be set on classes, ids or directly on the HTML element.

```
.background, #background, body{  
background: rgb(203, 159, 157) }
```

If only the background color should be changed can be used:

```
.background{ background-color: rgb(203,  
159, 157) }
```

This example shows the color as background, it is applied via the CSS property "background".

To optimize and compress your CSS code, you can use our [online CSS compressor and optimizer](#) based on csstidy. If you want to create a linear or radial gradient as background or border, check our [CSS Gradient Generator](#).

Hey! You found this booklet interesting? Support Converting Colors with the new Membership Option!

The pro membership hides all ads, plus gives you double the colors in the color bucket, and more awesome pro features!

[Learn more, Memberships starting at \\$2.50/m!](#)

**Follow me
on Twitter!**

@ConvertingColor