

Converting Colors

XYZ(43.0499, 39.0116, 31.6466)

Have a look what the booklet for
XYZ(43.0499, 39.0116, 31.6466)
contains.

XYZ(43.0499, 39.0116, 31.6466)	3
<i>Conversions</i>	4
<i>Details</i>	6
<i>Harmonies</i>	12
<i>Previews</i>	24
<i>Color Blindness Simulation</i>	28
<i>CSS Examples</i>	31

Color

**XYZ(43.0499, 39.0116,
31.6466)**

Conversions

Conversions Part 1

Format	Color
Hex	D19B90
RGB	209, 155, 144
RGB Percent	82%, 61%, 56%
CMY	0.1804, 0.3921, 0.4353
CMYK	0.00, 0.26, 0.31, 0.18
HSL	10°, 41%, 69%
HSV	10°, 31%, 82%
XYZ	43.0499, 39.0116, 31.6466
YIQ	169.8920, 35.7150, 8.0270

Conversions

Conversions Part 2

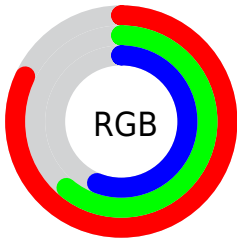
Format	Color
R _Y B	209, 157, 144
Decimal	13736848
CIE Lab	68.76, 18.64, 13.66
CIE LCh	69, 23.109, 36.226
Yxy	39.0116, 0.3786, 0.3431
Android (android.graphics.Color)	4291926928 (0xFFD19B90)
YUV	169.8920, -12.7648, 34.2977
Hunter-Lab	62.4593, 13.7270, 13.6807

Details

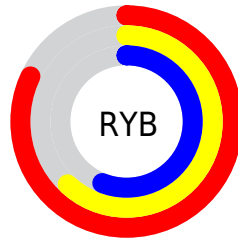
The XYZ color **43.0499, 39.0116, 31.6466** is a light color, and the websafe version is hex **CC9999**. A complement of this color would be **43.2037, 50.9194, 67.8731**, and the grayscale version is **38.2047, 40.1943, 43.7716**.

A 20% lighter version of the original color is **74.4796, 71.4304, 63.2880**, and **20.1076, 17.4811, 12.9041** is the 20% darker color. If you saturate the color by 10%, you get **38.9135, 33.0628, 23.1029**, and if you desaturate by 10%, it is **47.8996, 45.9133, 41.8878**.

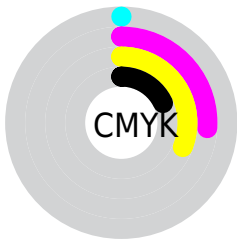
Distribution



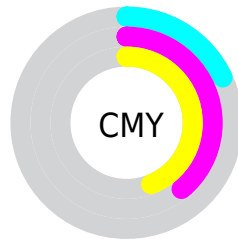
- Red (82%)
- Green (61%)
- Blue (56%)



- Red (82%)
- Yellow (62%)
- Blue (56%)



- Cyan (0%)
- Magenta (26%)
- Yellow (31%)
- Black (18%)





- Cyan (18%)
- Magenta (39%)
- Yellow (44%)

Brightness & Saturation Gradients


These gradients show how the XYZ color 43.0499, 39.0116, 31.6466 changes by changing the brightness by 10 percent. The first figure shows a shift by +10% for each color and the second figure -10%.


Similar to the brightness gradients but the following saturation gradients show a change of the XYZ color 43.0499, 39.0116, 31.6466 by changing the saturation by 10% instead.


 43.0499, 39.0116,
31.6466


 43.0499, 39.0116,
31.6466


349.7350,
341.9398, 323.9492

 30.1190, 26.7688,
20.8291


 79.0414, 73.6560,
63.3481

 20.0774, 17.3996,
12.8091


 102.8327, 96.8264,
85.0692

 12.5599, 10.5198,
7.1681


130.9748,
124.4081, 111.2620

 7.2011, 5.7450,
3.4874

163.8330,
156.7855, 142.3449

 3.6356, 2.6906,
1.3486

201.7728,
194.3429, 178.7366

 1.4981, 0.9724,
0.1011

245.1595,

 0.3246, 0.0000,

237.4649, 220.8555

0.0000

294.3584,
286.5357, 269.1202

■ 0.0000, 0.0000,
0.0000

■ 43.0499, 39.0116,
31.6466

■ 43.0499, 39.0116,
31.6466

■ 38.9135, 33.0628,
23.1029

■ 47.8996, 45.9133,
41.8878

■ 35.4532, 28.0195,
16.1625

■ 53.4912, 53.8016,
53.9092

■ 32.6334, 23.8385,
10.7253

■ 59.8553, 62.7153,
67.7908

■ 30.4134, 20.4711,
6.6791

■ 67.0203, 72.6895,
83.6071

■ 28.7482, 17.8632,
3.8960

■ 75.0126, 83.7575,
101.4286

■ 27.5854, 15.9542,
2.2240

■ 80.1046, 92.2954,
108.2006

■ 26.9069, 14.7800,
1.4347

Harmonies

Analogous

The Analogous color harmony consists of three colors that are next to each other on the color wheel.



44.5230, 39.0116, 40.3289



43.0499, 39.0116, 31.6466



39.9888, 39.0116, 26.5760

Triad

The Triadic color harmony groups three colors that are evenly spaced from another and form a triangle on the color wheel.



43.0499, 39.0116, 31.6466



31.0058, 39.0116, 34.8604



37.8477, 39.0116, 65.8231

Complementary

The Complementary color scheme is a pair of colors which are on the opposite of each other on the color wheel.



43.0499, 39.0116, 31.6466



43.2037, 50.9194, 67.8731

Split Complementary

Split-complementary colors differ from the complementary color scheme. The scheme consists of three colors, the original color and two neighbors of the complement color.



34.3146, 39.0116, 63.7154



43.0499, 39.0116, 31.6466



30.5153, 39.0116, 44.7000

Square

The Square scheme is like the rectangle color scheme, but the four colors are evenly spaced on the color wheel.



43.0499, 39.0116, 31.6466



33.0747, 39.0116, 28.2068



31.6881, 39.0116, 55.5332



41.3949, 39.0116, 60.8944

Rectangle

The Rectangle color scheme consists of four colors that form a rectangle on the color wheel.



43.0499, 39.0116, 31.6466



37.5444, 39.0116, 25.3756



31.6881, 39.0116, 55.5332



36.6181, 39.0116, 65.9238

Sweetspot

The Sweet Spot groups the original color and five complimentary colors.



43.0509, 39.0134, 31.6474



85.7894, 87.0427, 88.6605



46.4804, 37.5872, 58.3325



18.0626, 18.2096, 18.3262



0.0000, 0.0000, 0.0000



20.3446, 21.4041, 23.3091

Same Dimension

The Same Dimension uses a secret algorithm to generate beautiful new colors.



43.0509, 39.0134, 31.6474



63.2899, 55.1164, 40.8594



49.1700, 51.2515, 33.6871



11.9682, 12.1271, 12.3220



16.6394, 9.2118, 0.9011



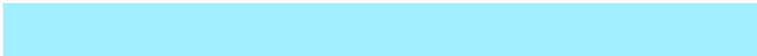
0.9815, 0.6173, 0.0674

Inverse Universe

The Inverse Universe completely reimagines the original color for something new.



43.2037, 50.9194, 67.8731



63.5519, 76.5096, 106.0260



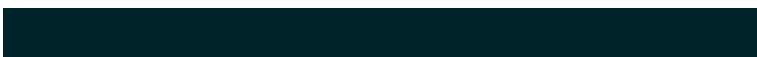
36.5864, 37.6846, 65.6673



11.9810, 13.0522, 15.1315



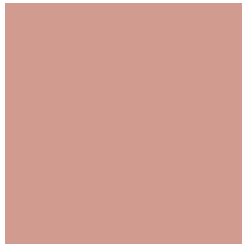
16.4459, 21.5384, 40.4830



0.9657, 1.2966, 2.2789

Previews

White Background



This preview shows how the XYZ color 43.0499, 39.0116, 31.6466 looks on a white background.

Color Contrast Check

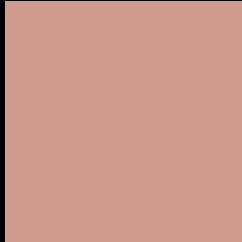
Large Text (above 18pt) WCAG AA × Fail

Any Text WCAG AA × Fail

Large Text (above 18pt) WCAG AAA × Fail

Any Text WCAG AAA × Fail

Black Background



This preview shows how the XYZ color 43.0499, 39.0116, 31.6466 looks on a black background.

Color Contrast Check

Large Text (above 18pt) WCAG AA ✓ Pass

Any Text WCAG AA ✓ Pass

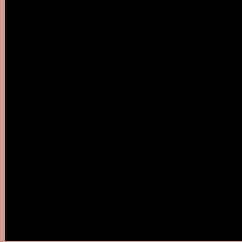
Large Text (above 18pt) WCAG AAA ✓ Pass

Any Text WCAG AAA ✓ Pass

If you want to check with other color combinations, try the [Color Contrast Checker](#).

XYZ 43.0499, 39.0116, 31.6466

Background



This preview shows how black text looks on a background with the XYZ color 43.0499, 39.0116, 31.6466.



This preview shows how white text looks on a background with the XYZ color 43.0499, 39.0116,

31.6466.

Color Blindness Simulation

Color vision deficiency is a very complex topic, and I could not describe the different causes any better than Wikipedia does, so if you want to learn more, you should check out their [article about color blindness](#).

Dichromacy



Original Color

43.0499, 39.0116, 31.6466

Protanopia

37.1868, 39.3212, 34.4840

Deuteranopia

39.8706, 39.1613, 31.4441



Tritanopia

44.7930, 38.9857, 40.2861

Trichromacy



Original Color

43.0499, 39.0116, 31.6466

Protanomaly

38.9360, 38.8973, 33.4728

Deuteranomaly

40.9093, 38.9216, 31.3431

Tritanomaly

44.0554, 38.9184, 37.0883

Monochromacy



Original Color

43.0499, 39.0116, 31.6466

Achromatopsia

38.2080, 40.1978, 43.7754

Achromatomaly

39.6553, 39.6738, 39.2860

CSS Examples

Text

The CSS property to change the color of the text to XYZ 43.0499, 39.0116, 31.6466 is called "color". The color property can be set on classes, ids or directly on the HTML element.

This example shows how text in the color `rgb(209, 155, 144)` looks like.

```
.text, #text, p{  
    color:rgb(209, 155, 144)  
}
```

If you want to add a text shadow in that color use the text-shadow property, you can generate a text shadow directly with our [CSS Text Shadow Generator](#).

Here you see how black text with a 4 pixel rgb(209, 155, 144) colored shadow looks like.

```
.shadow{ text-shadow: 4px 4px 2px rgb(209, 155, 144) }
```

Border

The CSS property to change the border of an element to XYZ 43.0499, 39.0116, 31.6466 is called "border". The border property can be set on classes, ids or directly on the HTML element.

This example shows the color as border, it can be applied via the CSS property "border" or "border-color".

```
.border, #border, table{ border:4px solid rgb(209, 155, 144) }
```


If only the border color should be changed use the property `border-color`.

```
.border{ border-color:rgb(209, 155, 144) }
```

If you want to add a box shadow in that color use:

Here you see how a box with a 4 pixel `rgb(209, 155, 144)` colored shadow looks like.

```
.boxshadow{ -moz-box-shadow:4px 4px 4px  
4px rgb(209, 155, 144); -webkit-box-  
shadow:4px 4px 4px 4px rgb(209, 155, 144);  
box-shadow:4px 4px 4px 4px rgb(209, 155,  
144) }
```

Background

The CSS property to change the background color of an element to XYZ 43.0499, 39.0116, 31.6466 is called "background". The background property can be set on classes, ids or directly on the HTML element.

```
.background, #background, body{  
background: rgb(209, 155, 144) }
```

If only the background color should be changed can be used:

```
.background{ background-color: rgb(209,  
155, 144) }
```

This example shows the color as background, it is applied via the CSS property "background".

To optimize and compress your CSS code, you can use our [online CSS compressor and optimizer](#) based on csstidy. If you want to create a linear or radial gradient as background or border, check our [CSS Gradient Generator](#).

Hey! You found this booklet interesting? Support Converting Colors with the new Membership Option!

The pro membership hides all ads, plus gives you double the colors in the color bucket, and more awesome pro features!

[Learn more, Memberships starting at \\$2.50/m!](#)

**Follow me
on Twitter!**

@ConvertingColor