

Converting Colors

XYZ(43.0572, 43.5363, 33.7875)

Have a look what the booklet for
XYZ(43.0572, 43.5363, 33.7875)
contains.

XYZ(43.0449, 43.4819, 33.7279)	3
<i>Conversions</i>	4
<i>Details</i>	6
<i>Harmonies</i>	12
<i>Previews</i>	24
<i>Color Blindness Simulation</i>	28
<i>CSS Examples</i>	31

Color

**XYZ(43.0449, 43.4819,
33.7279)**

Conversions

Conversions Part 1

Format	Color
Hex	C5AC93
RGB	197, 172, 147
RGB Percent	77%, 67%, 58%
CMY	0.2275, 0.3255, 0.4235
CMYK	0.00, 0.13, 0.25, 0.23
HSL	30°, 30%, 67%
HSV	30°, 25%, 77%
XYZ	43.0449, 43.4819, 33.7279
YIQ	176.6250, 22.9250, -2.4750

Conversions

Conversions Part 2

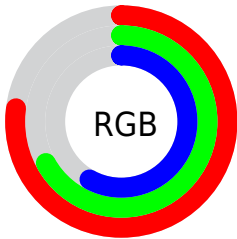
Format	Color
R _Y B	197, 197, 147
Decimal	12954771
CIE Lab	71.88, 5.17, 16.20
CIE LCh	72, 17.002, 72.283
Yxy	43.4819, 0.3579, 0.3616
Android (android.graphics.Color)	4291144851 (0xFFC5AC93)
YUV	176.6250, -14.6051, 17.8689
Hunter-Lab	65.9408, 1.1250, 15.8325

Details

The XYZ color **43.0449, 43.4819, 33.7279** is a light color, and the websafe version is hex **CC9999**. A complement of this color would be **36.8629, 39.7382, 58.5508**, and the grayscale version is **41.6599, 43.8295, 47.7303**.

A 20% lighter version of the original color is **78.8848, 80.2260, 66.5858**, and **20.1555, 20.1171, 13.8870** is the 20% darker color. If you saturate the color by 10%, you get **39.8244, 39.3063, 25.6697**, and if you desaturate by 10%, it is **46.6714, 48.0452, 43.2285**.

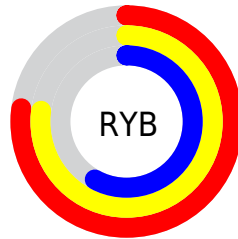
Distribution



Red (77%)

Green (67%)

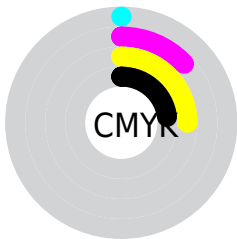
Blue (58%)



Red (77%)

Yellow (77%)

Blue (58%)

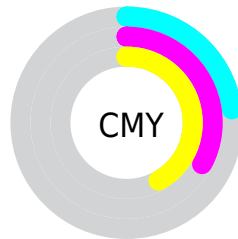


Cyan (0%)

Magenta (13%)

Yellow (25%)

Black (23%)



Cyan (23%)


Magenta (33%)


Yellow (42%)

Brightness & Saturation Gradients


These gradients show how the XYZ color 43.0449, 43.4819, 33.7279 changes by changing the brightness by 10 percent. The first figure shows a shift by +10% for each color and the second figure -10%.


Similar to the brightness gradients but the following saturation gradients show a change of the XYZ color 43.0449, 43.4819, 33.7279 by changing the saturation by 10% instead.


 43.0449, 43.4819,
33.7279


 43.0449, 43.4819,
33.7279


349.7148,
360.5898, 333.6491

 30.1150, 30.2634,
22.4090


 79.0339, 80.4376,
66.6394

 20.0744, 20.0386,
13.9565


 102.8237,
104.9435, 89.0690

 12.5577, 12.4231,
7.9520

130.9643,
133.9807, 116.0392

 7.1996, 7.0325,
3.9769

163.8208,
167.9336, 147.9687

 3.6347, 3.4824,
1.6127

201.7588,
207.1866, 185.2758

 1.4976, 1.3885,
0.2999

245.1436,

 0.3242, 0.2082,

252.1240, 228.3793

0.0000

294.3404,
303.1303, 277.6975

■ 0.0000, 0.0000,
0.0000

■ 43.0449, 43.4819,
33.7279

■ 43.0449, 43.4819,
33.7279

■ 39.8244, 39.3063,
25.6697

■ 46.6714, 48.0452,
43.2285

■ 36.9899, 35.5012,
18.9792

■ 50.7159, 53.0010,
54.2357

■ 34.5249, 32.0563,
13.5789

■ 55.1941, 58.3618,
66.8131

■ 32.4100, 28.9589,
9.3826

■ 60.1197, 64.1373,
81.0199

■ 30.6235, 26.1950,
6.2930

■ 65.5059, 70.3370,
96.9121

■ 29.1409, 23.7492,
4.1977

■ 69.6786, 76.2956,
105.6618

■ 27.9327, 21.6039,
2.9591

■ 72.5147, 81.9677,
106.6072

■ 27.4421, 20.7026,
2.5496

■ 75.5083, 87.9550,
107.6050

■ 76.8360, 90.6103,
108.0476

Harmonies

Analogous

The Analogous color harmony consists of three colors that are next to each other on the color wheel.



45.5835, 43.4819, 37.4110



43.0449, 43.4819, 33.7279



40.1556, 43.4819, 33.4170

Triad

The Triadic color harmony groups three colors that are evenly spaced from another and form a triangle on the color wheel.



43.0449, 43.4819, 33.7279



36.1258, 43.4819, 50.8166



45.1864, 43.4819, 60.1410

Complementary

The Complementary color scheme is a pair of colors which are on the opposite of each other on the color wheel.



43.0449, 43.4819, 33.7279



36.8629, 39.7382, 58.5508

Split Complementary

Split-complementary colors differ from the complementary color scheme. The scheme consists of three colors, the original color and two neighbors of the complement color.



42.5235, 43.4819, 64.6865



43.0449, 43.4819, 33.7279



37.3464, 43.4819, 58.8968

Square

The Square scheme is like the rectangle color scheme, but the four colors are evenly spaced on the color wheel.



43.0449, 43.4819, 33.7279



36.2508, 43.4819, 42.6583



39.6578, 43.4819, 64.2062



46.8590, 43.4819, 52.3617

Rectangle

The Rectangle color scheme consists of four colors that form a rectangle on the color wheel.



43.0449, 43.4819, 33.7279



38.4267, 43.4819, 35.1085



39.6578, 43.4819, 64.2062



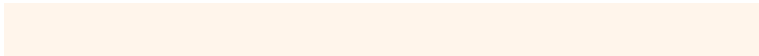
44.3723, 43.4819, 62.1365

Sweetspot

The Sweet Spot groups the original color and five complimentary colors.



43.0460, 43.4839, 33.7288



88.7701, 92.4199, 91.4548



40.9064, 35.7168, 43.7682



18.7599, 19.4880, 18.9171



0.0000, 0.0000, 0.0000



20.3446, 21.4041, 23.3091

Same Dimension

The Same Dimension uses a secret algorithm to generate beautiful new colors.



43.0460, 43.4839, 33.7288



74.0762, 73.9946, 52.7613



48.2589, 53.9096, 35.4664



11.0647, 11.4986, 11.1990



18.1334, 13.7841, 1.7049



0.9311, 0.7976, 0.1049

Inverse Universe

The Inverse Universe completely reimagines the original color for something new.



36.8629, 39.7382, 58.5508



61.2719, 66.2380, 104.1636



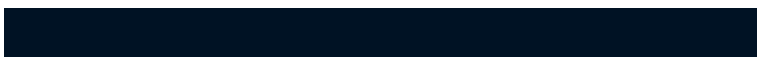
32.5449, 31.1023, 57.1115



10.4874, 11.1489, 13.5167



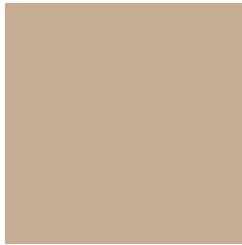
9.6150, 8.6240, 35.9022



0.5277, 0.5532, 1.7241

Previews

White Background



This preview shows how the XYZ color 43.0449, 43.4819, 33.7279 looks on a white background.

Color Contrast Check

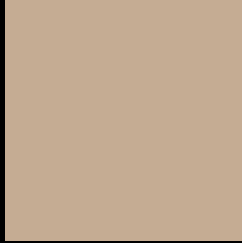
Large Text (above 18pt) WCAG AA × Fail

Any Text WCAG AA × Fail

Large Text (above 18pt) WCAG AAA × Fail

Any Text WCAG AAA × Fail

Black Background



This preview shows how the XYZ color 43.0449, 43.4819, 33.7279 looks on a black background.

Color Contrast Check

Large Text (above 18pt) WCAG AA ✓ Pass

Any Text WCAG AA ✓ Pass

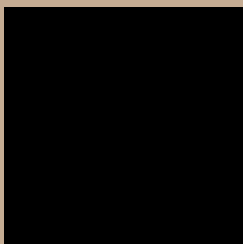
Large Text (above 18pt) WCAG AAA ✓ Pass

Any Text WCAG AAA ✓ Pass

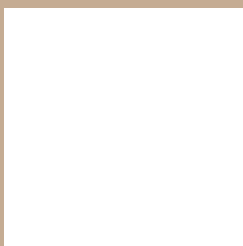
If you want to check with other color combinations, try the [Color Contrast Checker](#).

XYZ 43.0449, 43.4819, 33.7279

Background



This preview shows how black text looks on a background with the XYZ color 43.0449, 43.4819, 33.7279.



This preview shows how white text looks on a background with the XYZ color 43.0449, 43.4819,

Color Blindness Simulation

Color vision deficiency is a very complex topic, and I could not describe the different causes any better than Wikipedia does, so if you want to learn more, you should check out their [article about color blindness](#).

Dichromacy



Original Color

43.0449, 43.4819, 33.7279

Protanopia

41.1998, 43.6597, 34.6895

Deuteranopia

44.2698, 43.5525, 33.6770



Tritanopia

46.1443, 43.3502, 49.1154

Trichromacy



Original Color

43.0449, 43.4819, 33.7279

Protanomaly

41.9105, 43.7452, 34.2517

Deuteranomaly

43.9168, 43.6499, 33.7144

Tritanomaly

45.0753, 43.4824, 43.0630

Monochromacy



Original Color

43.0449, 43.4819, 33.7279

Achromatopsia

41.7894, 43.9657, 47.8787

Achromatomaly

41.9801, 43.6035, 42.2801

CSS Examples

Text

The CSS property to change the color of the text to XYZ 43.0449, 43.4819, 33.7279 is called "color". The color property can be set on classes, ids or directly on the HTML element.

This example shows how text in the color `rgb(197, 172, 147)` looks like.

```
.text, #text, p{  
    color:rgb(197, 172, 147)  
}
```

If you want to add a text shadow in that color use the text-shadow property, you can generate a text shadow directly with our [CSS Text Shadow Generator](#).

Here you see how black text with a 4 pixel rgb(197, 172, 147) colored shadow looks like.

```
.shadow{ text-shadow: 4px 4px 2px rgb(197, 172, 147) }
```

Border

The CSS property to change the border of an element to XYZ 43.0449, 43.4819, 33.7279 is called "border". The border property can be set on classes, ids or directly on the HTML element.

This example shows the color as border, it can be applied via the CSS property "border" or "border-color".

```
.border, #border, table{ border:4px solid rgb(197, 172, 147) }
```


If only the border color should be changed use the property `border-color`.

```
.border{ border-color:rgb(197, 172, 147) }
```

If you want to add a box shadow in that color use:

Here you see how a box with a 4 pixel `rgb(197, 172, 147)` colored shadow looks like.

```
.boxshadow{ -moz-box-shadow:4px 4px 4px  
4px rgb(197, 172, 147); -webkit-box-  
shadow:4px 4px 4px 4px rgb(197, 172, 147);  
box-shadow:4px 4px 4px 4px rgb(197, 172,  
147) }
```

Background

The CSS property to change the background color of an element to XYZ 43.0449, 43.4819, 33.7279 is called "background". The background property can be set on classes, ids or directly on the HTML element.

```
.background, #background, body{  
background: rgb(197, 172, 147) }
```

If only the background color should be changed can be used:

```
.background{ background-color: rgb(197,  
172, 147) }
```

This example shows the color as background, it is applied via the CSS property "background".

To optimize and compress your CSS code, you can use our [online CSS compressor and optimizer](#) based on csstidy. If you want to create a linear or radial gradient as background or border, check our [CSS Gradient Generator](#).

Hey! You found this booklet interesting? Support Converting Colors with the new Membership Option!

The pro membership hides all ads, plus gives you double the colors in the color bucket, and more awesome pro features!

[Learn more, Memberships starting at \\$2.50/m!](#)

**Follow me
on Twitter!**

@ConvertingColor