

Converting Colors

XYZ(43.0681, 42.5685, 50.1991)

Have a look what the booklet for
XYZ(43.0681, 42.5685, 50.1991)
contains.

XYZ(43.0679, 42.5660, 50.2021)	3
<i>Conversions</i>	4
<i>Details</i>	6
<i>Harmonies</i>	12
<i>Previews</i>	24
<i>Color Blindness Simulation</i>	28
<i>CSS Examples</i>	31

Color

**XYZ(43.0679, 42.5660,
50.2021)**

Conversions

Conversions Part 1

Format	Color
Hex	BAAAB6
RGB	186, 170, 182
RGB Percent	73%, 67%, 71%
CMY	0.2706, 0.3333, 0.2863
CMYK	0.00, 0.09, 0.02, 0.27
HSL	315°, 10%, 70%
HSV	315°, 9%, 73%
XYZ	43.0679, 42.5660, 50.2021
YIQ	176.1520, 5.6840, 7.1240

Conversions

Conversions Part 2

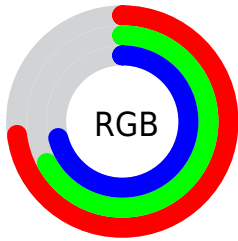
Format	Color
R _Y B	186, 170, 182
Decimal	12233398
CIE Lab	71.26, 7.92, -4.06
CIE LCh	71, 8.901, 332.858
Yxy	42.5660, 0.3171, 0.3134
Android (android.graphics.Color)	4290423478 (0xFFBAAAB6)
YUV	176.1520, 2.8831, 8.6367
Hunter-Lab	65.2426, 3.6567, 0.0481

Details

The XYZ color **43.0679, 42.5660, 50.2021** is a light color, and the websafe version is hex **999999**. A complement of this color would be **41.7781, 46.7209, 46.8627**, and the grayscale version is **41.3305, 43.4829, 47.3529**.

A 20% lighter version of the original color is **78.9758, 78.9007, 91.9558**, and **20.1137, 19.5284, 23.4781** is the 20% darker color. If you saturate the color by 10%, you get **39.3525, 35.8912, 46.6319**, and if you desaturate by 10%, it is **47.2950, 50.2375, 54.0227**.

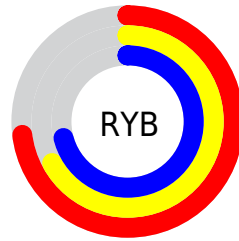
Distribution



Red (73%)

Green (67%)

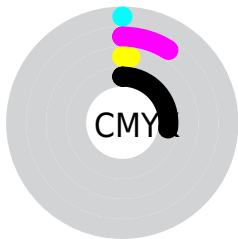
Blue (71%)



Red (73%)

Yellow (67%)

Blue (71%)

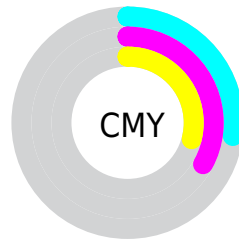


Cyan (0%)

Magenta (9%)

Yellow (2%)

Black (27%)



Cyan (27%)

Magenta (33%)

Yellow (29%)

Brightness & Saturation Gradients

These gradients show how the XYZ color 43.0679, 42.5660, 50.2021 changes by changing the brightness by 10 percent. The first figure shows a shift by +10% for each color and the second figure -10%.

Similar to the brightness gradients but the following saturation gradients show a change of the XYZ color 43.0679, 42.5660, 50.2021 by changing the saturation by 10% instead.

■ 43.0679, 42.5660,
50.2021

■ 43.0679, 42.5660,
50.2021

349.8077,
356.8239, 404.2134

■ 30.1331, 29.5447,
35.2017

■ 79.0684, 79.0555,
91.8736

■ 20.0882, 19.4933,
23.5335

102.8648,
103.2926, 119.3818

■ 12.5678, 12.0273,
14.7789

131.0126,
132.0370, 151.8964

■ 7.2066, 6.7622,
8.5195

163.8769,
165.6733, 189.8359

■ 3.6391, 3.3139,
4.3366

201.8232,
204.5857, 233.6188

■ 1.5001, 1.2977,
1.8118

245.2169,

■ 0.3259, 0.1394,

249.1586, 283.6636

0.4357

294.4233,
299.7766, 340.3890

■ 0.0000, 0.0000,
0.0000

■ 43.0679, 42.5660,
50.2021

■ 43.0679, 42.5660,
50.2021

■ 39.3525, 35.8912,
46.6319

■ 47.2950, 50.2375,
54.0227

■ 36.1245, 30.1663,
43.3016

■ 52.0497, 58.9391,
58.0982

■ 33.3627, 25.3490,
40.2040

■ 57.3518, 68.7093,
62.4363

■ 31.0433, 21.3916,
37.3304

■ 63.2187, 79.5830,
67.0437

■ 29.1402, 18.2420,
34.6711

■ 67.0602, 86.3793,
71.0577

■ 27.6242, 15.8425,
32.2159

■ 67.6311, 86.6077,
74.0638

■ 26.4626, 14.1278,
29.9528

■ 68.2188, 86.8428,
77.1586

■ 25.6169, 13.0211,
27.8683

■ 68.8235, 87.0846,
80.3429

■ 25.0224, 12.3934,
25.9399

■ 69.4453, 87.3334,
83.6173

Harmonies

Analogous

The Analogous color harmony consists of three colors that are next to each other on the color wheel.



42.0362, 42.5660, 53.6063



43.0679, 42.5660, 50.2021



43.3948, 42.5660, 45.9383

Triad

The Triadic color harmony groups three colors that are evenly spaced from another and form a triangle on the color wheel.



43.0679, 42.5660, 50.2021



40.3147, 42.5660, 38.6072



38.0926, 42.5660, 50.9550

Complementary

The Complementary color scheme is a pair of colors which are on the opposite of each other on the color wheel.



43.0679, 42.5660, 50.2021



41.7781, 46.7209, 46.8627

Split Complementary

Split-complementary colors differ from the complementary color scheme. The scheme consists of three colors, the original color and two neighbors of the complement color.



37.6562, 42.5660, 46.7584



43.0679, 42.5660, 50.2021



38.9193, 42.5660, 39.7748

Square

The Square scheme is like the rectangle color scheme, but the four colors are evenly spaced on the color wheel.



43.0679, 42.5660, 50.2021



41.7823, 42.5660, 39.4056



37.9552, 42.5660, 42.6948



39.1614, 42.5660, 54.0595

Rectangle

The Rectangle color scheme consists of four colors that form a rectangle on the color wheel.



43.0679, 42.5660, 50.2021



43.1626, 42.5660, 43.2247



37.9552, 42.5660, 42.6948



37.8683, 42.5660, 49.6165

Sweetspot

The Sweet Spot groups the original color and five complimentary colors.



43.0691, 42.5678, 50.2030



82.1997, 84.6452, 94.7813



40.6950, 41.2955, 52.2808



17.9650, 18.3920, 20.7489



90.7827, 95.5105, 104.0109



18.6292, 19.5994, 21.3438

Same Dimension

The Same Dimension uses a secret algorithm to generate beautiful new colors.



43.0691, 42.5678, 50.2030



76.9501, 75.1446, 89.9524



42.2659, 42.2465, 45.9730



9.2824, 9.1233, 10.8344



16.8141, 8.2994, 17.4395



0.6160, 0.3019, 0.7370

Inverse Universe

The Inverse Universe completely reimagines the original color for something new.



43.0691, 42.5678, 50.2030



76.9501, 75.1446, 89.9524



42.5813, 47.0422, 51.0927



9.2824, 9.1233, 10.8344



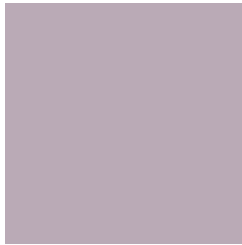
16.8141, 8.2994, 17.4395



0.6160, 0.3019, 0.7370

Previews

White Background



This preview shows how the XYZ color 43.0679, 42.5660, 50.2021 looks on a white background.

Color Contrast Check

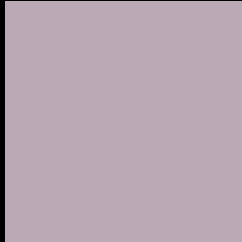
Large Text (above 18pt) WCAG AA × Fail

Any Text WCAG AA × Fail

Large Text (above 18pt) WCAG AAA × Fail

Any Text WCAG AAA × Fail

Black Background



This preview shows how the XYZ color 43.0679, 42.5660, 50.2021 looks on a black background.

Color Contrast Check

Large Text (above 18pt) WCAG AA ✓ Pass

Any Text WCAG AA ✓ Pass

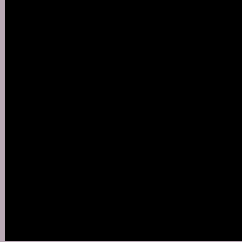
Large Text (above 18pt) WCAG AAA ✓ Pass

Any Text WCAG AAA ✓ Pass

If you want to check with other color combinations, try the [Color Contrast Checker](#).

XYZ 43.0679, 42.5660, 50.2021

Background



This preview shows how black text looks on a background with the XYZ color 43.0679, 42.5660, 50.2021.



This preview shows how white text looks on a background with the XYZ color 43.0679, 42.5660,

Color Blindness Simulation

Color vision deficiency is a very complex topic, and I could not describe the different causes any better than Wikipedia does, so if you want to learn more, you should check out their [article about color blindness](#).

Dichromacy



Original Color

43.0679, 42.5660, 50.2021

Protanopia

41.2745, 42.4618, 51.3679

Deuteranopia

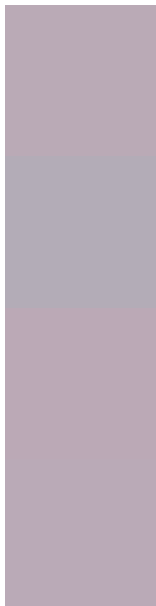
43.3705, 42.4447, 50.1627



Tritanopia

43.1717, 42.6075, 50.7484

Trichromacy



Original Color

43.0679, 42.5660, 50.2021

Protanomaly

41.8902, 42.5077, 50.7967

Deuteranomaly

43.1250, 42.3181, 50.1513

Tritanomaly

43.1717, 42.6075, 50.7484

Monochromacy



Original Color

43.0679, 42.5660, 50.2021

Achromatopsia

41.2663, 43.4154, 47.2793

Achromatomaly

41.9943, 43.1898, 48.2426

CSS Examples

Text

The CSS property to change the color of the text to XYZ 43.0679, 42.5660, 50.2021 is called "color". The color property can be set on classes, ids or directly on the HTML element.

This example shows how text in the color `rgb(186, 170, 182)` looks like.

```
.text, #text, p{  
    color:rgb(186, 170, 182)  
}
```

If you want to add a text shadow in that color use the text-shadow property, you can generate a text shadow directly with our [CSS Text Shadow Generator](#).

Here you see how black text with a 4 pixel rgb(186, 170, 182) colored shadow looks like.

```
.shadow{ text-shadow: 4px 4px 2px rgb(186, 170, 182) }
```

Border

The CSS property to change the border of an element to XYZ 43.0679, 42.5660, 50.2021 is called "border". The border property can be set on classes, ids or directly on the HTML element.

This example shows the color as border, it can be applied via the CSS property "border" or "border-color".

```
.border, #border, table{ border:4px solid rgb(186, 170, 182) }
```


If only the border color should be changed use the property `border-color`.

```
.border{ border-color:rgb(186, 170, 182) }
```

If you want to add a box shadow in that color use:

Here you see how a box with a 4 pixel `rgb(186, 170, 182)` colored shadow looks like.

```
.boxshadow{ -moz-box-shadow:4px 4px 4px  
4px rgb(186, 170, 182); -webkit-box-  
shadow:4px 4px 4px 4px rgb(186, 170, 182);  
box-shadow:4px 4px 4px 4px rgb(186, 170,  
182) }
```

Background

The CSS property to change the background color of an element to XYZ 43.0679, 42.5660, 50.2021 is called "background". The background property can be set on classes, ids or directly on the HTML element.

```
.background, #background, body{  
background: rgb(186, 170, 182) }
```

If only the background color should be changed can be used:

```
.background{ background-color: rgb(186,  
170, 182) }
```

This example shows the color as background, it is applied via the CSS property "background".

To optimize and compress your CSS code, you can use our [online CSS compressor and optimizer](#) based on csstidy. If you want to create a linear or radial gradient as background or border, check our [CSS Gradient Generator](#).

Hey! You found this booklet interesting? Support Converting Colors with the new Membership Option!

The pro membership hides all ads, plus gives you double the colors in the color bucket, and more awesome pro features!

[Learn more, Memberships starting at \\$2.50/m!](#)

**Follow me
on Twitter!**

@ConvertingColor