

# Converting Colors

XYZ(43.0844, 40.6271, 40.2214)

Have a look what the booklet for  
XYZ(43.0844, 40.6271, 40.2214)  
contains.

<b>XYZ(43.0844, 40.6271, 40.2214)</b> .....	3
<b><i>Conversions</i></b> .....	4
<b><i>Details</i></b> .....	6
<b><i>Harmonies</i></b> .....	12
<b><i>Previews</i></b> .....	24
<b><i>Color Blindness Simulation</i></b> .....	28
<b><i>CSS Examples</i></b> .....	31

# Color

**XYZ(43.0844, 40.6271,  
40.2214)**

# Conversions

## Conversions Part 1

<b>Format</b>	<b>Color</b>
Hex	C7A2A3
RGB	199, 162, 163
RGB Percent	78%, 64%, 64%
CMY	0.2196, 0.3647, 0.3608
CMYK	0.00, 0.19, 0.18, 0.22
HSL	358°, 25%, 71%
HSV	358°, 19%, 78%
XYZ	43.0844, 40.6271, 40.2214
YIQ	173.1770, 21.7310, 8.1550

# Conversions

## Conversions Part 2

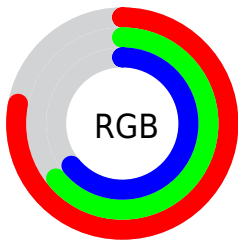
Format	Color
R <sub>Y</sub> B	199, 162, 163
Decimal	13083299
CIE Lab	69.91, 13.77, 4.62
CIE LCh	70, 14.525, 18.562
Yxy	40.6271, 0.3476, 0.3278
Android (android.graphics.Color)	4291273379 (0xFFC7A2A3)
YUV	173.1770, -5.0173, 22.6468
Hunter-Lab	63.7394, 9.1125, 7.2039

# Details

The XYZ color **43.0844, 40.6271, 40.2214** is a light color, and the websafe version is hex **CC9999**. A complement of this color would be **45.5184, 52.6065, 61.1836**, and the grayscale version is **39.8287, 41.9029, 45.6323**.

A 20% lighter version of the original color is **78.7077, 75.9477, 76.8407**, and **20.1222, 18.3193, 17.5143** is the 20% darker color. If you saturate the color by 10%, you get **38.2483, 33.5219, 30.6949**, and if you desaturate by 10%, it is **48.7432, 48.9517, 51.3338**.

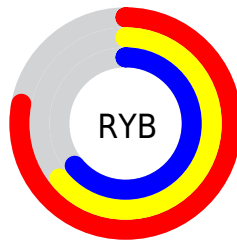
# Distribution



Red (78%)

Green (64%)

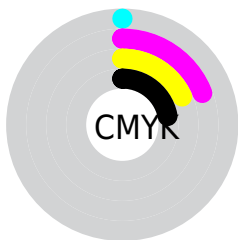
Blue (64%)



Red (78%)

Yellow (64%)

Blue (64%)

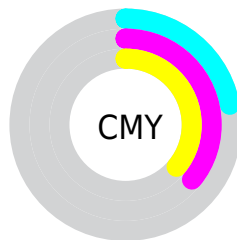


Cyan (0%)

Magenta (19%)

Yellow (18%)

Black (22%)



Cyan (22%)

Magenta (36%)


Yellow (36%)


# Brightness & Saturation Gradients

These gradients show how the XYZ color 43.0844, 40.6271, 40.2214 changes by changing the brightness by 10 percent. The first figure shows a shift by +10% for each color and the second figure -10%.


Similar to the brightness gradients but the following saturation gradients show a change of the XYZ color 43.0844, 40.6271, 40.2214 by changing the saturation by 10% instead.





 43.0844, 40.6271,  
40.2214

 43.0844, 40.6271,  
40.2214


349.8744,  
348.7597, 362.6357

 30.1462, 28.0278,  
27.3961


 79.0931, 76.1175,  
76.7413

 20.0982, 18.3466,  
17.6359


 102.8943, 99.7774,  
101.2730

 12.5751, 11.1991,  
10.5222


131.0472,  
127.8930, 130.5439

 7.2116, 6.2009,  
5.6364

163.9171,  
160.8486, 164.9726

 3.6423, 2.9676,  
2.5601

201.8694,  
199.0287, 204.9776

 1.5018, 1.1149,  
0.8717

245.2695,

 0.3271, 0.0000,

242.8177, 250.9774

0.0000

294.4827,  
292.5998, 303.3906

■ 0.0000, 0.0000,  
0.0000

■ 43.0844, 40.6271,  
40.2214

■ 43.0844, 40.6271,  
40.2214

■ 38.2483, 33.5219,  
30.6949

■ 48.7432, 48.9517,  
51.3338

■ 34.1935, 27.5737,  
22.6796

■ 55.2568, 58.5432,  
64.0969

■ 30.8799, 22.7230,  
16.0986

■ 62.6600, 69.4536,  
78.5753

■ 28.2627, 18.9026,  
10.8673

■ 70.9843, 81.7301,  
94.8291

■ 26.2923, 16.0381,  
6.8922

■ 77.3634, 90.8822,  
108.0723

■ 24.9123, 14.0451,  
4.0680

■ 24.0570, 12.8246,  
2.2720

■ 23.6281, 12.2208,  
1.3458

■ 23.5827, 12.1540,  
1.2569

# Harmonies

## Analogous

The Analogous color harmony consists of three colors that are next to each other on the color wheel.



43.2418, 40.6271, 46.8670



43.0844, 40.6271, 40.2214



41.7007, 40.6271, 35.1800

# Triad

The Triadic color harmony groups three colors that are evenly spaced from another and form a triangle on the color wheel.



43.0844, 40.6271, 40.2214



35.3076, 40.6271, 36.1707



37.7208, 40.6271, 58.2558

# Complementary

The Complementary color scheme is a pair of colors which are on the opposite of each other on the color wheel.



43.0844, 40.6271, 40.2214



45.5184, 52.6065, 61.1836

# Split Complementary

Split-complementary colors differ from the complementary color scheme. The scheme consists of three colors, the original color and two neighbors of the complement color.



35.6851, 40.6271, 54.7264



43.0844, 40.6271, 40.2214



34.3303, 40.6271, 41.7054

# Square

The Square scheme is like the rectangle color scheme, but the four colors are evenly spaced on the color wheel.



43.0844, 40.6271, 40.2214



37.1864, 40.6271, 33.0111



34.4656, 40.6271, 48.5092



40.0794, 40.6271, 57.7544



# Rectangle

The Rectangle color scheme consists of four colors that form a rectangle on the color wheel.



43.0844, 40.6271, 40.2214



40.2995, 40.6271, 33.1951



34.4656, 40.6271, 48.5092



36.9778, 40.6271, 57.4880

# Sweetspot

The Sweet Spot groups the original color and five complimentary colors.



43.0855, 40.6289, 40.2222



88.0567, 89.7016, 95.1985



46.4575, 41.9401, 59.6799



18.6921, 18.9707, 20.0712



0.0000, 0.0000, 0.0000



20.3446, 21.4041, 23.3091



# Same Dimension

The Same Dimension uses a secret algorithm to generate beautiful new colors.



43.0855, 40.6289, 40.2222



72.1139, 66.2502, 63.8826



46.2496, 47.0994, 40.8381



10.6453, 10.6415, 11.1152



15.1693, 7.8173, 0.8356



0.7224, 0.3718, 0.0613



# Inverse Universe

The Inverse Universe completely reimagines the original color for something new.



43.0855, 40.6289, 40.2222



72.1139, 66.2502, 63.8826



41.8841, 45.1533, 60.5412



10.6453, 10.6415, 11.1152



15.1693, 7.8173, 0.8356

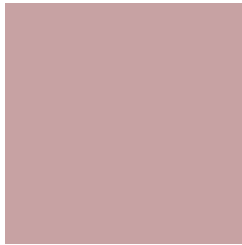


0.7224, 0.3718, 0.0613



# Previews

## White Background



This preview shows how the XYZ color 43.0844, 40.6271, 40.2214 looks on a white background.

## Color Contrast Check

Large Text (above 18pt) WCAG AA × Fail

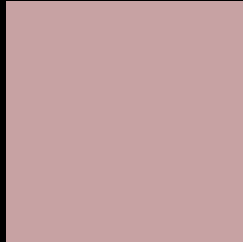
Any Text WCAG AA × Fail

Large Text (above 18pt) WCAG AAA × Fail

Any Text WCAG AAA × Fail



# Black Background



This preview shows how the XYZ color 43.0844, 40.6271, 40.2214 looks on a black background.

## Color Contrast Check

Large Text (above 18pt) WCAG AA ✓ Pass

Any Text WCAG AA ✓ Pass

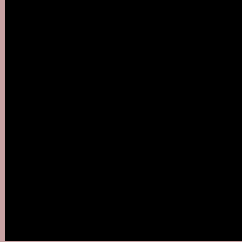
Large Text (above 18pt) WCAG AAA ✓ Pass

Any Text WCAG AAA ✓ Pass

If you want to check with other color combinations, try the [Color Contrast Checker](#).

# XYZ 43.0844, 40.6271, 40.2214

## Background



This preview shows how black text looks on a background with the XYZ color 43.0844, 40.6271, 40.2214.



This preview shows how white text looks on a background with the XYZ color 43.0844, 40.6271, 40.2214.



# Color Blindness Simulation

Color vision deficiency is a very complex topic, and I could not describe the different causes any better than Wikipedia does, so if you want to learn more, you should check out their [article about color blindness](#).

## Dichromacy



### Original Color

43.0844, 40.6271, 40.2214

### Protanopia

39.1218, 40.6906, 42.8379

### Deuteranopia

41.4626, 40.5953, 39.8328



## Tritanopia

43.9330, 40.4381, 45.0250

# Trichromacy



## Original Color

43.0844, 40.6271, 40.2214

## Protanomaly

40.4688, 40.5810, 41.7764

## Deuteranomaly

42.0452, 40.6289, 39.8086

## Tritanomaly

43.7257, 40.6337, 43.0746

# Monochromacy



## Original Color

43.0844, 40.6271, 40.2214

## Achromatopsia

39.7200, 41.7885, 45.5077

## Achromatomaly

40.6408, 41.1856, 43.3437

# CSS Examples

## Text

The CSS property to change the color of the text to XYZ 43.0844, 40.6271, 40.2214 is called "color". The color property can be set on classes, ids or directly on the HTML element.

This example shows how text in the color `rgb(199, 162, 163)` looks like.

```
.text, #text, p{  
    color:rgb(199, 162, 163)  
}
```

If you want to add a text shadow in that color use the text-shadow property, you can generate a text shadow directly with our [CSS Text Shadow Generator](#).

Here you see how black text with a 4 pixel rgb(199, 162, 163) colored shadow looks like.

```
.shadow{ text-shadow: 4px 4px 2px rgb(199, 162, 163) }
```

## Border

The CSS property to change the border of an element to XYZ 43.0844, 40.6271, 40.2214 is called "border". The border property can be set on classes, ids or directly on the HTML element.

This example shows the color as border, it can be applied via the CSS property "border" or "border-color".

```
.border, #border, table{ border:4px solid rgb(199, 162, 163) }
```



If only the border color should be changed use the property `border-color`.

```
.border{ border-color:rgb(199, 162, 163) }
```

If you want to add a box shadow in that color use:

Here you see how a box with a 4 pixel `rgb(199, 162, 163)` colored shadow looks like.

```
.boxshadow{ -moz-box-shadow:4px 4px 4px  
4px rgb(199, 162, 163); -webkit-box-  
shadow:4px 4px 4px 4px rgb(199, 162, 163);  
box-shadow:4px 4px 4px 4px rgb(199, 162,  
163) }
```

# Background

The CSS property to change the background color of an element to XYZ 43.0844, 40.6271, 40.2214 is called "background". The background property can be set on classes, ids or directly on the HTML element.

```
.background, #background, body{  
background: rgb(199, 162, 163) }
```

If only the background color should be changed can be used:

```
.background{ background-color: rgb(199,  
162, 163) }
```

This example shows the color as background, it is applied via the CSS property "background".

To optimize and compress your CSS code, you can use our [online CSS compressor and optimizer](#) based on csstidy. If you want to create a linear or radial gradient as background or border, check our [CSS Gradient Generator](#).

Hey! You found this booklet interesting? Support Converting Colors with the new Membership Option!

The pro membership hides all ads, plus gives you double the colors in the color bucket, and more awesome pro features!

**[Learn more, Memberships starting at \\$2.50/m!](#)**

**Follow me  
on Twitter!**

@ConvertingColor