

Converting Colors

XYZ(43.1182, 42.8885, 41.1780)

Have a look what the booklet for
XYZ(43.1182, 42.8885, 41.1780)
contains.

XYZ(43.0679, 42.7672, 41.1069)	3
<i>Conversions</i>	4
<i>Details</i>	6
<i>Harmonies</i>	12
<i>Previews</i>	24
<i>Color Blindness Simulation</i>	28
<i>CSS Examples</i>	31

Color

**XYZ(43.0679, 42.7672,
41.1069)**

Conversions

Conversions Part 1

Format	Color
Hex	C1AAA4
RGB	193, 170, 164
RGB Percent	76%, 67%, 64%
CMY	0.2431, 0.3333, 0.3569
CMYK	0.00, 0.12, 0.15, 0.24
HSL	12°, 19%, 70%
HSV	12°, 15%, 76%
XYZ	43.0679, 42.7672, 41.1069
YIQ	176.1930, 15.6340, 3.0100

Conversions

Conversions Part 2

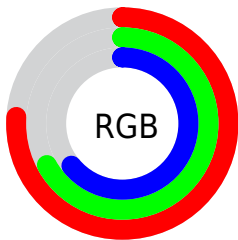
Format	Color
RYB	193, 172, 164
Decimal	12692132
CIELab	71.40, 7.33, 6.13
CIELCh	71, 9.558, 39.932
Yxy	42.7672, 0.3393, 0.3369
Android (android.graphics.Color)	4290882212 (0xFFC1AAA4)
YUV	176.1930, -6.0111, 14.7397
Hunter-Lab	65.3966, 3.1096, 8.5092

Details

The XYZ color **43.0679, 42.7672, 41.1069** is a light color, and the websafe version is hex **CC9999**. A complement of this color would be **42.7056, 47.2825, 57.3282**, and the grayscale version is **41.3931, 43.5488, 47.4246**.

A 20% lighter version of the original color is **79.1357, 79.2889, 78.1512**, and **20.0505, 19.6157, 18.0587** is the 20% darker color. If you saturate the color by 10%, you get **38.7518, 36.7156, 31.7118**, and if you desaturate by 10%, it is **47.9849, 49.5965, 52.0083**.

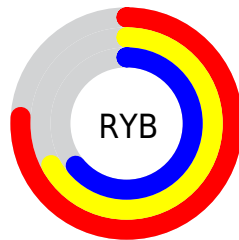
Distribution



Red (76%)

Green (67%)

Blue (64%)



Red (76%)

Yellow (67%)

Blue (64%)

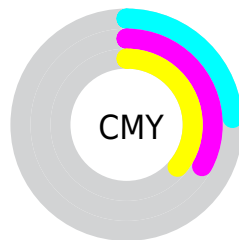


Cyan (0%)

Magenta (12%)

Yellow (15%)

Black (24%)



Cyan (24%)


Magenta (33%)

Yellow (36%)

Brightness & Saturation Gradients


These gradients show how the XYZ color 43.0679, 42.7672, 41.1069 changes by changing the brightness by 10 percent. The first figure shows a shift by +10% for each color and the second figure -10%.


Similar to the brightness gradients but the following saturation gradients show a change of the XYZ color 43.0679, 42.7672, 41.1069 by changing the saturation by 10% instead.


 43.0679, 42.7672,
41.1069

 43.0679, 42.7672,
41.1069

349.8077,
357.6535, 366.4571

 30.1331, 29.7025,
28.0823


 79.0684, 79.3594,
78.1016

 20.0882, 19.6129,
18.1481


 102.8648,
103.6558, 102.9087

 12.5678, 12.1140,
10.8858

131.0126,
132.4648, 132.4805

 7.2066, 6.8213,
5.8769

163.8769,
166.1708, 167.2354

 3.6391, 3.3506,
2.7028

201.8232,
205.1583, 207.5919

 1.5001, 1.3174,
0.9448

245.2169,

 0.3259, 0.1546,

249.8117, 253.9687

0.0000

294.4233,
300.5153, 306.7842

■ 0.0000, 0.0000,
0.0000

■ 43.0679, 42.7672,
41.1069

■ 43.0679, 42.7672,
41.1069

■ 38.7518, 36.7156,
31.7118

■ 47.9849, 49.5965,
52.0083

■ 35.0098, 31.4084,
23.7538

■ 53.5213, 57.2239,
64.4756

■ 31.8183, 26.8183,
17.1626

■ 59.6992, 65.6763,
78.5683

■ 29.1505, 22.9141,
11.8607

■ 66.5383, 74.9774,
94.3422

■ 26.9775, 19.6623,
7.7626

■ 73.1592, 84.7908,
107.1181

■ 25.2671, 17.0265,
4.7728

■ 75.8025, 90.0776,
107.9992

■ 23.9835, 14.9666,
2.7807

■ 23.0845, 13.4373,
1.6527

■ 22.7498, 12.8521,
1.2816

Harmonies

Analogous

The Analogous color harmony consists of three colors that are next to each other on the color wheel.



43.7734, 42.7672, 45.0545



43.0679, 42.7672, 41.1069



41.7199, 42.7672, 38.7292

Triad

The Triadic color harmony groups three colors that are evenly spaced from another and form a triangle on the color wheel.



43.0679, 42.7672, 41.1069



37.8115, 42.7672, 43.5914



41.1850, 42.7672, 55.8511

Complementary

The Complementary color scheme is a pair of colors which are on the opposite of each other on the color wheel.



43.0679, 42.7672, 41.1069



42.7056, 47.2825, 57.3282

Split Complementary

Split-complementary colors differ from the complementary color scheme. The scheme consists of three colors, the original color and two neighbors of the complement color.



39.5965, 42.7672, 55.3950



43.0679, 42.7672, 41.1069



37.6768, 42.7672, 48.1114

Square

The Square scheme is like the rectangle color scheme, but the four colors are evenly spaced on the color wheel.



43.0679, 42.7672, 41.1069



38.6951, 42.7672, 40.0967



38.3223, 42.7672, 52.4887



42.6675, 42.7672, 53.6967

Rectangle

The Rectangle color scheme consists of four colors that form a rectangle on the color wheel.



43.0679, 42.7672, 41.1069



40.6526, 42.7672, 38.2554



38.3223, 42.7672, 52.4887



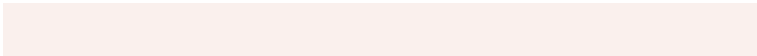
40.6453, 42.7672, 56.0012

Sweetspot

The Sweet Spot groups the original color and five complimentary colors.



43.0691, 42.7691, 41.1078



85.8915, 88.7589, 93.0366



44.2594, 41.4854, 52.8013



18.2852, 18.8461, 19.6435



92.9021, 97.7402, 106.4391



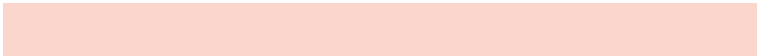
19.4759, 20.4902, 22.3138

Same Dimension

The Same Dimension uses a secret algorithm to generate beautiful new colors.



43.0691, 42.7691, 41.1078



74.5029, 72.9189, 67.8538



45.8966, 48.4241, 42.0503



10.2384, 10.4082, 10.5312



15.1785, 8.6428, 0.8682



0.7065, 0.4748, 0.0544

Inverse Universe

The Inverse Universe completely reimagines the original color for something new.



42.7056, 47.2825, 57.3282



73.7274, 82.5303, 102.4044



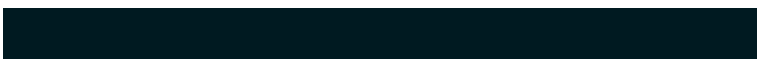
39.8221, 41.5156, 56.3671



10.1858, 11.0629, 12.8833



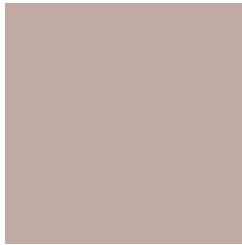
14.0424, 17.8414, 36.2602



0.6524, 0.8622, 1.5819

Previews

White Background



This preview shows how the XYZ color 43.0679, 42.7672, 41.1069 looks on a white background.

Color Contrast Check

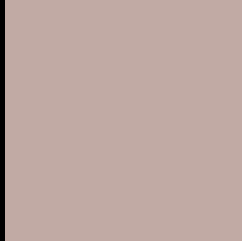
Large Text (above 18pt) WCAG AA × Fail

Any Text WCAG AA × Fail

Large Text (above 18pt) WCAG AAA × Fail

Any Text WCAG AAA × Fail

Black Background



This preview shows how the XYZ color 43.0679, 42.7672, 41.1069 looks on a black background.

Color Contrast Check

Large Text (above 18pt) WCAG AA ✓ Pass

Any Text WCAG AA ✓ Pass

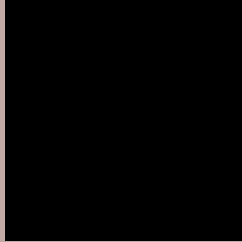
Large Text (above 18pt) WCAG AAA ✓ Pass

Any Text WCAG AAA ✓ Pass

If you want to check with other color combinations, try the [Color Contrast Checker](#).

XYZ 43.0679, 42.7672, 41.1069

Background



This preview shows how black text looks on a background with the XYZ color 43.0679, 42.7672, 41.1069.



This preview shows how white text looks on a background with the XYZ color 43.0679, 42.7672,

Color Blindness Simulation

Color vision deficiency is a very complex topic, and I could not describe the different causes any better than Wikipedia does, so if you want to learn more, you should check out their [article about color blindness](#).

Dichromacy



Original Color

43.0679, 42.7672, 41.1069

Protanopia

40.8414, 42.7286, 42.1713

Deuteranopia

43.6538, 42.7920, 41.0808



Tritanopia

44.6649, 42.5757, 49.5799

Trichromacy



Original Color

43.0679, 42.7672, 41.1069

Protanomaly

41.7427, 42.9180, 41.6812

Deuteranomaly

43.3945, 42.6584, 41.0687

Tritanomaly

43.9886, 42.5697, 46.4558

Monochromacy



Original Color

43.0679, 42.7672, 41.1069

Achromatopsia

41.2663, 43.4154, 47.2793

Achromatomaly

41.8738, 43.1957, 45.1603

CSS Examples

Text

The CSS property to change the color of the text to XYZ 43.0679, 42.7672, 41.1069 is called "color". The color property can be set on classes, ids or directly on the HTML element.

This example shows how text in the color `rgb(193, 170, 164)` looks like.

```
.text, #text, p{  
    color:rgb(193, 170, 164)  
}
```

If you want to add a text shadow in that color use the text-shadow property, you can generate a text shadow directly with our [CSS Text Shadow Generator](#).

Here you see how black text with a 4 pixel rgb(193, 170, 164) colored shadow looks like.

```
.shadow{ text-shadow: 4px 4px 2px rgb(193, 170, 164) }
```

Border

The CSS property to change the border of an element to XYZ 43.0679, 42.7672, 41.1069 is called "border". The border property can be set on classes, ids or directly on the HTML element.

This example shows the color as border, it can be applied via the CSS property "border" or "border-color".

```
.border, #border, table{ border:4px solid rgb(193, 170, 164) }
```


If only the border color should be changed use the property `border-color`.

```
.border{ border-color:rgb(193, 170, 164) }
```

If you want to add a box shadow in that color use:

Here you see how a box with a 4 pixel `rgb(193, 170, 164)` colored shadow looks like.

```
.boxshadow{ -moz-box-shadow:4px 4px 4px  
4px rgb(193, 170, 164); -webkit-box-  
shadow:4px 4px 4px 4px rgb(193, 170, 164);  
box-shadow:4px 4px 4px 4px rgb(193, 170,  
164) }
```

Background

The CSS property to change the background color of an element to XYZ 43.0679, 42.7672, 41.1069 is called "background". The background property can be set on classes, ids or directly on the HTML element.

```
.background, #background, body{  
background: rgb(193, 170, 164) }
```

If only the background color should be changed can be used:

```
.background{ background-color: rgb(193,  
170, 164) }
```

This example shows the color as background, it is applied via the CSS property "background".

To optimize and compress your CSS code, you can use our [online CSS compressor and optimizer](#) based on csstidy. If you want to create a linear or radial gradient as background or border, check our [CSS Gradient Generator](#).

Hey! You found this booklet interesting? Support Converting Colors with the new Membership Option!

The pro membership hides all ads, plus gives you double the colors in the color bucket, and more awesome pro features!

[Learn more, Memberships starting at \\$2.50/m!](#)

**Follow me
on Twitter!**

@ConvertingColor