

Converting Colors

XYZ(43.1335, 42.1875, 43.5767)

Have a look what the booklet for
XYZ(43.1335, 42.1875, 43.5767)
contains.

XYZ(43.1564, 42.2073, 43.4084)	3
<i>Conversions</i>	4
<i>Details</i>	6
<i>Harmonies</i>	12
<i>Previews</i>	24
<i>Color Blindness Simulation</i>	28
<i>CSS Examples</i>	31

Color

**XYZ(43.1564, 42.2073,
43.4084)**

Conversions

Conversions Part 1

Format	Color
Hex	C1A8A9
RGB	193, 168, 169
RGB Percent	76%, 66%, 66%
CMY	0.2431, 0.3412, 0.3372
CMYK	0.00, 0.13, 0.12, 0.24
HSL	358°, 17%, 71%
HSV	358°, 13%, 76%
XYZ	43.1564, 42.2073, 43.4084
YIQ	175.5890, 14.5790, 5.6110

Conversions

Conversions Part 2

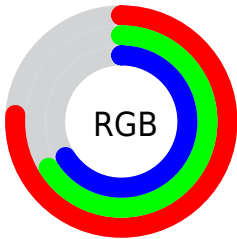
Format	Color
RYB	193, 168, 169
Decimal	12691625
CIELab	71.01, 9.24, 2.83
CIElCh	71, 9.665, 16.999
Yxy	42.2073, 0.3351, 0.3278
Android (android.graphics.Color)	4290881705 (0xFFC1A8A9)
YUV	175.5890, -3.2484, 15.2694
Hunter-Lab	64.9671, 4.8815, 5.8618

Details

The XYZ color **43.1564, 42.2073, 43.4084** is a light color, and the websafe version is hex **CC9999**. A complement of this color would be **44.7345, 50.2716, 57.2172**, and the grayscale version is **41.0650, 43.2035, 47.0487**.

A 20% lighter version of the original color is **79.2666, 78.4812, 81.4916**, and **20.1037, 19.2641, 19.4884** is the 20% darker color. If you saturate the color by 10%, you get **38.2363, 34.9563, 33.7853**, and if you desaturate by 10%, it is **48.8543, 50.6183, 54.5082**.

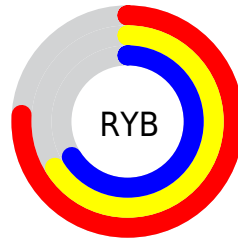
Distribution



Red (76%)

Green (66%)

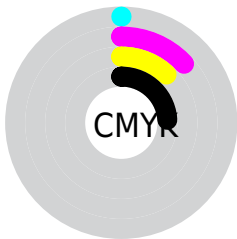
Blue (66%)



Red (76%)

Yellow (66%)

Blue (66%)

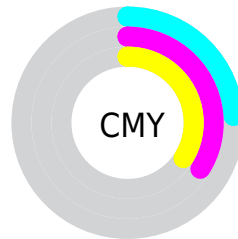


Cyan (0%)

Magenta (13%)

Yellow (12%)

Black (24%)



Cyan (24%)


Magenta (34%)


Yellow (34%)

Brightness & Saturation Gradients


These gradients show how the XYZ color 43.1564, 42.2073, 43.4084 changes by changing the brightness by 10 percent. The first figure shows a shift by +10% for each color and the second figure -10%.


Similar to the brightness gradients but the following saturation gradients show a change of the XYZ color 43.1564, 42.2073, 43.4084 by changing the saturation by 10% instead.


 43.1564, 42.2073,
43.4084

 43.1564, 42.2073,
43.4084


350.1652,
355.3416, 376.2591

 30.2029, 29.2636,
29.8719


 79.2011, 78.5133,
81.6197

 20.1415, 19.2804,
19.4902


 103.0229,
102.6444, 107.1317

 12.6068, 11.8730,
11.8446


131.1983,
131.2734, 137.4725

 7.2335, 6.6573,
6.5167

164.0925,
164.7848, 173.0608

 3.6562, 3.2487,
3.0879

202.0710,
203.5629, 214.3150

 1.5095, 1.2629,
1.1397

245.4990,

 0.3323, 0.1122,

247.9921, 261.6538

0.0000

294.7420,
298.4569, 315.4956

■ 0.0000, 0.0000,
0.0000

■ 43.1564, 42.2073,
43.4084

■ 43.1564, 42.2073,
43.4084

■ 38.2363, 34.9563,
33.7853

■ 48.8543, 50.6183,
54.5082

■ 34.0569, 28.8092,
25.5741

■ 55.3579, 60.2312,
67.1404

■ 30.5835, 23.7135,
18.7092

■ 62.6982, 71.0926,
81.3611

■ 27.7770, 19.6104,
13.1188

■ 70.9033, 83.2450,
97.2228

■ 25.5946, 16.4351,
8.7245

■ 75.8025, 90.0776,
107.9992

■ 23.9887, 14.1155,
5.4389

■ 22.9047, 12.5684,
3.1632

■ 22.2774, 11.6943,
1.7808

■ 22.0347, 11.3544,
1.2512

Harmonies

Analogous

The Analogous color harmony consists of three colors that are next to each other on the color wheel.



43.2152, 42.2073, 47.9839



43.1564, 42.2073, 43.4084



42.2694, 42.2073, 39.7619

Triad

The Triadic color harmony groups three colors that are evenly spaced from another and form a triangle on the color wheel.



43.1564, 42.2073, 43.4084



37.8910, 42.2073, 40.1610



39.4231, 42.2073, 55.1658

Complementary

The Complementary color scheme is a pair of colors which are on the opposite of each other on the color wheel.



43.1564, 42.2073, 43.4084



44.7345, 50.2716, 57.2172

Split Complementary

Split-complementary colors differ from the complementary color scheme. The scheme consists of three colors, the original color and two neighbors of the complement color.



38.0385, 42.2073, 52.7634



43.1564, 42.2073, 43.4084



37.1701, 42.2073, 43.9872

Square

The Square scheme is like the rectangle color scheme, but the four colors are evenly spaced on the color wheel.



43.1564, 42.2073, 43.4084



39.2169, 42.2073, 37.9749



37.2233, 42.2073, 48.6026



41.0303, 42.2073, 54.9849

Rectangle

The Rectangle color scheme consists of four colors that form a rectangle on the color wheel.



43.1564, 42.2073, 43.4084



41.3409, 42.2073, 38.2557



37.2233, 42.2073, 48.6026



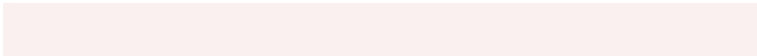
38.9171, 42.2073, 54.6272

Sweetspot

The Sweet Spot groups the original color and five complimentary colors.



43.1576, 42.2092, 43.4093



86.2935, 88.8785, 95.2810



45.3045, 43.0313, 56.3706



18.3385, 18.8099, 20.1017



92.9021, 97.7402, 106.4391



19.4759, 20.4902, 22.3138

Same Dimension

The Same Dimension uses a secret algorithm to generate beautiful new colors.



43.1576, 42.2092, 43.4093



74.2363, 71.0860, 71.7722



45.2317, 46.5066, 43.6408



10.0891, 10.0843, 10.5598



14.6626, 7.5548, 0.8693



0.6393, 0.3287, 0.0677

Inverse Universe

The Inverse Universe completely reimagines the original color for something new.



43.1576, 42.2092, 43.4093



74.2363, 71.0860, 71.7722



42.4525, 45.5303, 57.0033



10.0891, 10.0843, 10.5598



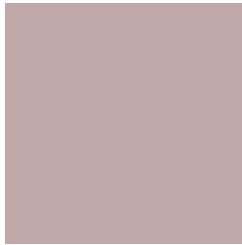
14.6626, 7.5548, 0.8693



0.6393, 0.3287, 0.0677

Previews

White Background



This preview shows how the XYZ color 43.1564, 42.2073, 43.4084 looks on a white background.

Color Contrast Check

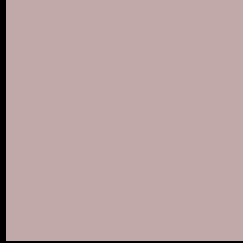
Large Text (above 18pt) WCAG AA × Fail

Any Text WCAG AA × Fail

Large Text (above 18pt) WCAG AAA × Fail

Any Text WCAG AAA × Fail

Black Background



This preview shows how the XYZ color 43.1564, 42.2073, 43.4084 looks on a black background.

Color Contrast Check

Large Text (above 18pt) WCAG AA ✓ Pass

Any Text WCAG AA ✓ Pass

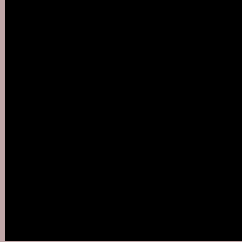
Large Text (above 18pt) WCAG AAA ✓ Pass

Any Text WCAG AAA ✓ Pass

If you want to check with other color combinations, try the [Color Contrast Checker](#).

XYZ 43.1564, 42.2073, 43.4084

Background



This preview shows how black text looks on a background with the XYZ color 43.1564, 42.2073, 43.4084.



This preview shows how white text looks on a background with the XYZ color 43.1564, 42.2073,

Color Blindness Simulation

Color vision deficiency is a very complex topic, and I could not describe the different causes any better than Wikipedia does, so if you want to learn more, you should check out their [article about color blindness](#).

Dichromacy



Original Color

43.1564, 42.2073, 43.4084

Protanopia

40.5214, 42.2128, 45.0419

Deuteranopia

43.1564, 42.2073, 43.4084



Tritanopia

44.0210, 41.9964, 48.4338

Trichromacy



Original Color

43.1564, 42.2073, 43.4084

Protanomaly

41.4420, 42.1334, 44.4764

Deuteranomaly

43.1564, 42.2073, 43.4084

Tritanomaly

43.8047, 42.2019, 46.3945

Monochromacy



Original Color

43.1564, 42.2073, 43.4084

Achromatopsia

41.2663, 43.4154, 47.2793

Achromatomaly

41.7778, 42.8494, 45.6040

CSS Examples

Text

The CSS property to change the color of the text to XYZ 43.1564, 42.2073, 43.4084 is called "color". The color property can be set on classes, ids or directly on the HTML element.

This example shows how text in the color `rgb(193, 168, 169)` looks like.

```
.text, #text, p{  
    color:rgb(193, 168, 169)  
}
```

If you want to add a text shadow in that color use the text-shadow property, you can generate a text shadow directly with our [CSS Text Shadow Generator](#).

Here you see how black text with a 4 pixel rgb(193, 168, 169) colored shadow looks like.

```
.shadow{ text-shadow: 4px 4px 2px rgb(193, 168, 169) }
```

Border

The CSS property to change the border of an element to XYZ 43.1564, 42.2073, 43.4084 is called "border". The border property can be set on classes, ids or directly on the HTML element.

This example shows the color as border, it can be applied via the CSS property "border" or "border-color".

```
.border, #border, table{ border:4px solid rgb(193, 168, 169) }
```


If only the border color should be changed use the property `border-color`.

```
.border{ border-color:rgb(193, 168, 169) }
```

If you want to add a box shadow in that color use:

Here you see how a box with a 4 pixel `rgb(193, 168, 169)` colored shadow looks like.

```
.boxshadow{ -moz-box-shadow:4px 4px 4px 4px rgb(193, 168, 169); -webkit-box-shadow:4px 4px 4px 4px rgb(193, 168, 169); box-shadow:4px 4px 4px 4px rgb(193, 168, 169) }
```

Background

The CSS property to change the background color of an element to XYZ 43.1564, 42.2073, 43.4084 is called "background". The background property can be set on classes, ids or directly on the HTML element.

```
.background, #background, body{  
background: rgb(193, 168, 169) }
```

If only the background color should be changed can be used:

```
.background{ background-color: rgb(193,  
168, 169) }
```

This example shows the color as background, it is applied via the CSS property "background".

To optimize and compress your CSS code, you can use our [online CSS compressor and optimizer](#) based on csstidy. If you want to create a linear or radial gradient as background or border, check our [CSS Gradient Generator](#).

Hey! You found this booklet interesting? Support Converting Colors with the new Membership Option!

The pro membership hides all ads, plus gives you double the colors in the color bucket, and more awesome pro features!

[Learn more, Memberships starting at \\$2.50/m!](#)

**Follow me
on Twitter!**

@ConvertingColor