

Converting Colors

XYZ(43.1472, 38.6965, 35.7593)

Have a look what the booklet for
XYZ(43.1472, 38.6965, 35.7593)
contains.

XYZ(43.1205, 38.7097, 35.7709)	3
<i>Conversions</i>	4
<i>Details</i>	6
<i>Harmonies</i>	12
<i>Previews</i>	24
<i>Color Blindness Simulation</i>	28
<i>CSS Examples</i>	31

Color

**XYZ(43.1205, 38.7097,
35.7709)**

Conversions

Conversions Part 1

Format	Color
Hex	CF9A9A
RGB	207, 154, 154
RGB Percent	81%, 60%, 60%
CMY	0.1882, 0.3961, 0.3961
CMYK	0.00, 0.26, 0.26, 0.19
HSL	0°, 36%, 71%
HSV	0°, 26%, 81%
XYZ	43.1205, 38.7097, 35.7709
YIQ	169.8470, 31.5880, 11.2360

Conversions

Conversions Part 2

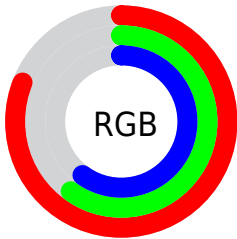
Format	Color
R _Y B	207, 154, 154
Decimal	13605530
CIE Lab	68.54, 19.80, 7.76
CIE LCh	69, 21.262, 21.397
Yxy	38.7097, 0.3667, 0.3292
Android (android.graphics.Color)	4291795610 (0xFFCF9A9A)
YUV	169.8470, -7.8126, 32.5832
Hunter-Lab	62.2171, 14.8321, 9.4640

Details

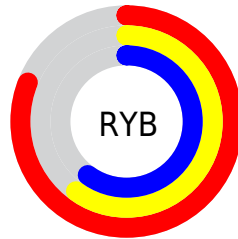
The XYZ color **43.1205, 38.7097, 35.7709** is a light color, and the websafe version is hex **CC9999**. A complement of this color would be **46.9012, 55.9991, 67.3688**, and the grayscale version is **38.1598, 40.1471, 43.7202**.

A 20% lighter version of the original color is **75.4256, 71.4150, 69.4836**, and **20.2473, 17.3552, 15.1147** is the 20% darker color. If you saturate the color by 10%, you get **38.4163, 31.8264, 26.4179**, and if you desaturate by 10%, it is **48.7132, 46.8936, 46.8877**.

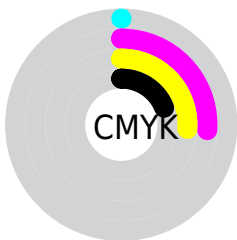
Distribution



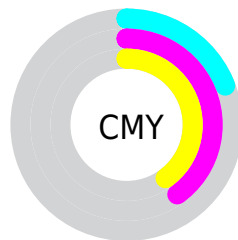
- Red (81%)
- Green (60%)
- Blue (60%)



- Red (81%)
- Yellow (60%)
- Blue (60%)



- Cyan (0%)
- Magenta (26%)
- Yellow (26%)
- Black (19%)





- Cyan (19%)
- Magenta (40%)
- Yellow (40%)

Brightness & Saturation Gradients


These gradients show how the XYZ color 43.1205, 38.7097, 35.7709 changes by changing the brightness by 10 percent. The first figure shows a shift by +10% for each color and the second figure -10%.


Similar to the brightness gradients but the following saturation gradients show a change of the XYZ color 43.1205, 38.7097, 35.7709 by changing the saturation by 10% instead.


 43.1205, 38.7097,
35.7709


 43.1205, 38.7097,
35.7709


350.0202,
340.6547, 342.9652

 30.1746, 26.5340,
23.9690


 79.1472, 73.1946,
69.8434

 20.1199, 17.2235,
15.0987


 102.9588, 96.2726,
92.9510

 12.5910, 10.3940,
8.7413


131.1230,
123.7535, 120.6644

 7.2226, 5.6610,
4.4783

164.0051,
156.0216, 153.4019

 3.6492, 2.6400,
1.8912

201.9705,
193.4614, 191.5823

 1.5057, 0.9468,
0.4871

245.3846,

 0.3297, 0.0000,

236.4572, 235.6239

0.0000

294.6127,
285.3935, 285.9453

■ 0.0000, 0.0000,
0.0000

■ 43.1205, 38.7097,
35.7709

■ 43.1205, 38.7097,
35.7709

■ 38.4163, 31.8264,
26.4179

■ 48.7132, 46.8936,
46.8877

■ 34.5520, 26.1718,
18.7359

■ 55.2334, 56.4345,
59.8498

■ 31.4790, 21.6751,
12.6271

■ 62.7217, 67.3919,
74.7366

■ 29.1427, 18.2564,
7.9830

■ 71.2154, 79.8204,
91.6221

■ 27.4815, 15.8254,
4.6808

■ 79.5423, 92.0055,
108.1742

■ 26.4237, 14.2774,
2.5781

■ 25.8811, 13.4833,
1.4998

■ 25.7324, 13.2658,
1.2043

Harmonies

Analogous

The Analogous color harmony consists of three colors that are next to each other on the color wheel.



43.5347, 38.7097, 44.9680



43.1205, 38.7097, 35.7709



40.9587, 38.7097, 29.3148

Triad

The Triadic color harmony groups three colors that are evenly spaced from another and form a triangle on the color wheel.



43.1205, 38.7097, 35.7709



31.9854, 38.7097, 31.6559



35.8374, 38.7097, 63.1422

Complementary

The Complementary color scheme is a pair of colors which are on the opposite of each other on the color wheel.



43.1205, 38.7097, 35.7709



46.9012, 55.9991, 67.3688

Split Complementary

Split-complementary colors differ from the complementary color scheme. The scheme consists of three colors, the original color and two neighbors of the complement color.



32.9187, 38.7097, 58.2682



43.1205, 38.7097, 35.7709



30.7848, 38.7097, 39.4490

Square

The Square scheme is like the rectangle color scheme, but the four colors are evenly spaced on the color wheel.



43.1205, 38.7097, 35.7709



34.4924, 38.7097, 27.2018



31.1158, 38.7097, 49.2419



39.1924, 38.7097, 61.7596

Rectangle

The Rectangle color scheme consists of four colors that form a rectangle on the color wheel.



43.1205, 38.7097, 35.7709



38.8854, 38.7097, 26.9727



31.1158, 38.7097, 49.2419



34.7759, 38.7097, 62.1573

Sweetspot

The Sweet Spot groups the original color and five complimentary colors.



43.1215, 38.7115, 35.7717



85.7720, 86.4238, 90.4554



48.5506, 40.8821, 64.3639



18.0096, 17.9873, 18.6670



0.0000, 0.0000, 0.0000



20.3446, 21.4041, 23.3091

Same Dimension

The Same Dimension uses a secret algorithm to generate beautiful new colors.



43.1215, 38.7115, 35.7717



64.5882, 55.4260, 48.3425



47.9877, 48.4437, 37.3937



11.8089, 11.8084, 12.2689



16.2125, 8.3581, 0.7588



0.9065, 0.4674, 0.0424

Inverse Universe

The Inverse Universe completely reimagines the original color for something new.



46.9012, 55.9991, 67.3688



71.7013, 87.9605, 107.8068



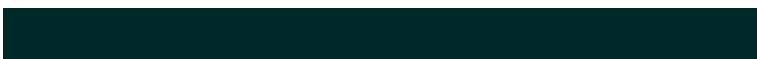
41.0118, 44.2203, 65.4056



12.1584, 13.4070, 15.1906



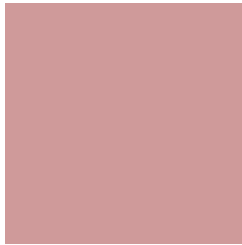
21.1516, 30.9499, 42.0516



1.1827, 1.7306, 2.3513

Previews

White Background



This preview shows how the XYZ color 43.1205, 38.7097, 35.7709 looks on a white background.

Color Contrast Check

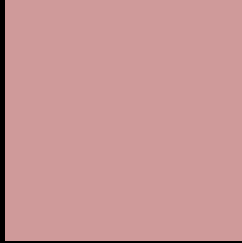
Large Text (above 18pt) WCAG AA × Fail

Any Text WCAG AA × Fail

Large Text (above 18pt) WCAG AAA × Fail

Any Text WCAG AAA × Fail

Black Background



This preview shows how the XYZ color 43.1205, 38.7097, 35.7709 looks on a black background.

Color Contrast Check

Large Text (above 18pt) WCAG AA ✓ Pass

Any Text WCAG AA ✓ Pass

Large Text (above 18pt) WCAG AAA ✓ Pass

Any Text WCAG AAA ✓ Pass

If you want to check with other color combinations, try the [Color Contrast Checker](#).

XYZ 43.1205, 38.7097, 35.7709

Background



This preview shows how black text looks on a background with the XYZ color 43.1205, 38.7097, 35.7709.



This preview shows how white text looks on a background with the XYZ color 43.1205, 38.7097,

Color Blindness Simulation

Color vision deficiency is a very complex topic, and I could not describe the different causes any better than Wikipedia does, so if you want to learn more, you should check out their [article about color blindness](#).

Dichromacy



Original Color

43.1205, 38.7097, 35.7709

Protanopia

37.2650, 38.9813, 39.2783

Deuteranopia

39.6564, 38.9594, 35.5668



Tritanopia

43.9415, 38.5467, 40.2462

Trichromacy



Original Color

43.1205, 38.7097, 35.7709

Protanomaly

39.0995, 38.6236, 37.7421

Deuteranomaly

40.9129, 38.8319, 35.4760

Tritanomaly

43.7488, 38.7304, 38.4276

Monochromacy



Original Color

43.1205, 38.7097, 35.7709

Achromatopsia

38.2080, 40.1978, 43.7754

Achromatomaly

39.5047, 39.2985, 40.6252

CSS Examples

Text

The CSS property to change the color of the text to XYZ 43.1205, 38.7097, 35.7709 is called "color". The color property can be set on classes, ids or directly on the HTML element.

This example shows how text in the color `rgb(207, 154, 154)` looks like.

```
.text, #text, p{  
    color:rgb(207, 154, 154)  
}
```

If you want to add a text shadow in that color use the text-shadow property, you can generate a text shadow directly with our [CSS Text Shadow Generator](#).

Here you see how black text with a 4 pixel rgb(207, 154, 154) colored shadow looks like.

```
.shadow{ text-shadow: 4px 4px 2px rgb(207, 154, 154) }
```

Border

The CSS property to change the border of an element to XYZ 43.1205, 38.7097, 35.7709 is called "border". The border property can be set on classes, ids or directly on the HTML element.

This example shows the color as border, it can be applied via the CSS property "border" or "border-color".

```
.border, #border, table{ border:4px solid rgb(207, 154, 154) }
```


If only the border color should be changed use the property `border-color`.

```
.border{ border-color:rgb(207, 154, 154) }
```

If you want to add a box shadow in that color use:

Here you see how a box with a 4 pixel `rgb(207, 154, 154)` colored shadow looks like.

```
.boxshadow{ -moz-box-shadow:4px 4px 4px  
4px rgb(207, 154, 154); -webkit-box-  
shadow:4px 4px 4px 4px rgb(207, 154, 154);  
box-shadow:4px 4px 4px 4px rgb(207, 154,  
154) }
```

Background

The CSS property to change the background color of an element to XYZ 43.1205, 38.7097, 35.7709 is called "background". The background property can be set on classes, ids or directly on the HTML element.

```
.background, #background, body{  
background: rgb(207, 154, 154) }
```

If only the background color should be changed can be used:

```
.background{ background-color: rgb(207,  
154, 154) }
```

This example shows the color as background, it is applied via the CSS property "background".

To optimize and compress your CSS code, you can use our [online CSS compressor and optimizer](#) based on csstidy. If you want to create a linear or radial gradient as background or border, check our [CSS Gradient Generator](#).

Hey! You found this booklet interesting? Support Converting Colors with the new Membership Option!

The pro membership hides all ads, plus gives you double the colors in the color bucket, and more awesome pro features!

[Learn more, Memberships starting at \\$2.50/m!](#)

**Follow me
on Twitter!**

@ConvertingColor