

Converting Colors

XYZ(43.1775, 39.5566, 37.2810)

Have a look what the booklet for
XYZ(43.1775, 39.5566, 37.2810)
contains.

XYZ(43.0446, 39.3856, 37.2318)	3
<i>Conversions</i>	4
<i>Details</i>	6
<i>Harmonies</i>	12
<i>Previews</i>	24
<i>Color Blindness Simulation</i>	28
<i>CSS Examples</i>	31

Color

**XYZ(43.0446, 39.3856,
37.2318)**

Conversions

Conversions Part 1

Format	Color
Hex	CC9D9D
RGB	204, 157, 157
RGB Percent	80%, 62%, 62%
CMY	0.2000, 0.3843, 0.3843
CMYK	0.00, 0.23, 0.23, 0.20
HSL	0°, 32%, 71%
HSV	0°, 23%, 80%
XYZ	43.0446, 39.3856, 37.2318
YIQ	171.0530, 28.0120, 9.9640

Conversions

Conversions Part 2

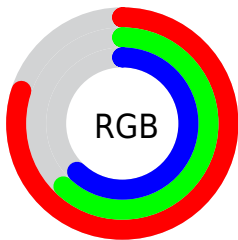
Format	Color
R _Y B	204, 157, 157
Decimal	13409693
CIE Lab	69.03, 17.46, 6.75
CIE LCh	69, 18.720, 21.125
Yxy	39.3856, 0.3597, 0.3291
Android (android.graphics.Color)	4291599773 (0xFFCC9D9D)
YUV	171.0530, -6.9281, 28.8945
Hunter-Lab	62.7579, 12.6037, 8.7562

Details

The XYZ color **43.0446, 39.3856, 37.2318** is a light color, and the websafe version is hex **CC9999**. A complement of this color would be **46.3961, 54.7120, 65.2421**, and the grayscale version is **38.7600, 40.7786, 44.4078**.

A 20% lighter version of the original color is **76.6671, 73.1004, 72.3564**, and **20.0475, 17.5333, 15.9633** is the 20% darker color. If you saturate the color by 10%, you get **38.2786, 32.4118, 27.7558**, and if you desaturate by 10%, it is **48.6798, 47.6317, 48.4331**.

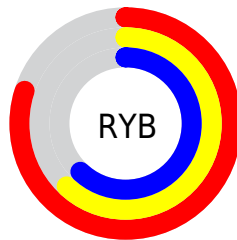
Distribution



Red (80%)

Green (62%)

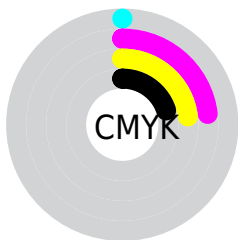
Blue (62%)



Red (80%)

Yellow (62%)

Blue (62%)

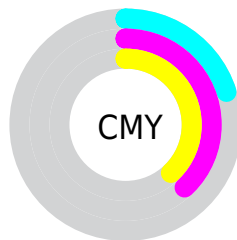


Cyan (0%)

Magenta (23%)

Yellow (23%)

Black (20%)



Cyan (20%)


Magenta (38%)


Yellow (38%)

Brightness & Saturation Gradients


These gradients show how the XYZ color 43.0446, 39.3856, 37.2318 changes by changing the brightness by 10 percent. The first figure shows a shift by +10% for each color and the second figure -10%.


Similar to the brightness gradients but the following saturation gradients show a change of the XYZ color 43.0446, 39.3856, 37.2318 by changing the saturation by 10% instead.


 43.0446, 39.3856,
37.2318


 43.0446, 39.3856,
37.2318


349.7136,
343.5271, 349.5119

 30.1148, 27.0598,
25.0898


 79.0335, 74.2270,
72.1195

 20.0742, 17.6182,
15.9244


 102.8232, 97.5115,
95.7022

 12.5576, 10.6762,
9.3169


130.9636,
125.2176, 123.9357

 7.1995, 5.8495,
4.8488

163.8201,
157.7298, 157.2383

 3.6346, 2.7538,
2.1016

201.7580,
195.4324, 196.0287

 1.4976, 1.0046,
0.6167

245.1426,

 0.3242, 0.0000,

238.7099, 240.7254

0.0000

294.3394,
287.9467, 291.7469

■ 0.0000, 0.0000,
0.0000

■ 43.0446, 39.3856,
37.2318

■ 43.0446, 39.3856,
37.2318

■ 38.2786, 32.4118,
27.7558

■ 48.6798, 47.6317,
48.4331

■ 34.3355, 26.6419,
19.9171

■ 55.2209, 57.2031,
61.4368

■ 31.1697, 22.0094,
13.6238

■ 62.7066, 68.1566,
76.3184

■ 28.7298, 18.4391,
8.7737

■ 71.1722, 80.5441,
93.1483

■ 26.9584, 15.8469,
5.2524

■ 78.7120, 91.5774,
108.1354

■ 25.7892, 14.1359,
2.9285

■ 25.1426, 13.1896,
1.6433

■ 24.9021, 12.8378,
1.1655

Harmonies

Analogous

The Analogous color harmony consists of three colors that are next to each other on the color wheel.



43.3932, 39.3856, 45.4691



43.0446, 39.3856, 37.2318



41.1517, 39.3856, 31.3239

Triad

The Triadic color harmony groups three colors that are evenly spaced from another and form a triangle on the color wheel.



43.0446, 39.3856, 37.2318



33.1443, 39.3856, 33.3777



36.5568, 39.3856, 61.2497

Complementary

The Complementary color scheme is a pair of colors which are on the opposite of each other on the color wheel.



43.0446, 39.3856, 37.2318



46.3961, 54.7120, 65.2421

Split Complementary

Split-complementary colors differ from the complementary color scheme. The scheme consists of three colors, the original color and two neighbors of the complement color.



33.9488, 39.3856, 56.9874



43.0446, 39.3856, 37.2318



32.0485, 39.3856, 40.3992

Square

The Square scheme is like the rectangle color scheme, but the four colors are evenly spaced on the color wheel.



43.0446, 39.3856, 37.2318



35.4053, 39.3856, 29.3128



32.3349, 39.3856, 49.0816



39.5405, 39.3856, 60.1063

Rectangle

The Rectangle color scheme consists of four colors that form a rectangle on the color wheel.



43.0446, 39.3856, 37.2318



39.3214, 39.3856, 29.1420



32.3349, 39.3856, 49.0816



35.6096, 39.3856, 60.3829

Sweetspot

The Sweet Spot groups the original color and five complimentary colors.



43.0457, 39.3874, 37.2326



86.8760, 88.0393, 92.6501



47.8583, 41.3114, 62.5785



18.4520, 18.6347, 19.5466



0.0000, 0.0000, 0.0000



20.3446, 21.4041, 23.3091

Same Dimension

The Same Dimension uses a secret algorithm to generate beautiful new colors.



43.0457, 39.3874, 37.2326



66.9085, 58.8213, 52.9551



47.4104, 48.1169, 38.6875



11.2124, 11.2138, 11.6530



15.6737, 8.0803, 0.7336



0.8086, 0.4169, 0.0379

Inverse Universe

The Inverse Universe completely reimagines the original color for something new.



46.3961, 54.7120, 65.2421



73.4796, 88.8774, 107.8900



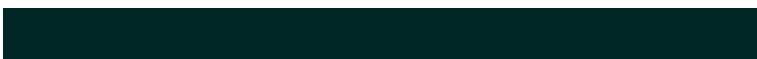
41.2265, 44.3730, 63.5190



11.5432, 12.7269, 14.4185



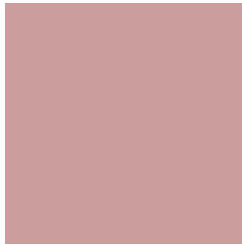
20.4484, 29.9208, 40.6538



1.0549, 1.5436, 2.0973

Previews

White Background



This preview shows how the XYZ color 43.0446, 39.3856, 37.2318 looks on a white background.

Color Contrast Check

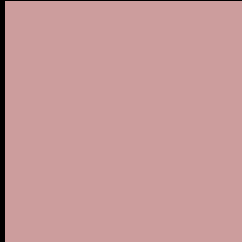
Large Text (above 18pt) WCAG AA × Fail

Any Text WCAG AA × Fail

Large Text (above 18pt) WCAG AAA × Fail

Any Text WCAG AAA × Fail

Black Background



This preview shows how the XYZ color 43.0446, 39.3856, 37.2318 looks on a black background.

Color Contrast Check

Large Text (above 18pt) WCAG AA ✓ Pass

Any Text WCAG AA ✓ Pass

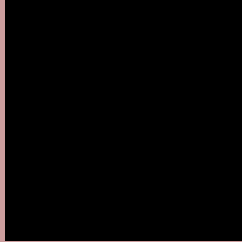
Large Text (above 18pt) WCAG AAA ✓ Pass

Any Text WCAG AAA ✓ Pass

If you want to check with other color combinations, try the [Color Contrast Checker](#).

XYZ 43.0446, 39.3856, 37.2318

Background



This preview shows how black text looks on a background with the XYZ color 43.0446, 39.3856, 37.2318.



This preview shows how white text looks on a background with the XYZ color 43.0446, 39.3856,

37.2318.

Color Blindness Simulation

Color vision deficiency is a very complex topic, and I could not describe the different causes any better than Wikipedia does, so if you want to learn more, you should check out their [article about color blindness](#).

Dichromacy



Original Color

43.0446, 39.3856, 37.2318

Protanopia

37.8471, 39.5338, 40.2864

Deuteranopia

40.3331, 39.5418, 36.9590



Tritanopia

43.8732, 39.2118, 41.8155

Trichromacy



Original Color

43.0446, 39.3856, 37.2318

Protanomaly

39.4756, 39.3145, 39.2261

Deuteranomaly

41.2513, 39.4921, 36.9011

Tritanomaly

43.6762, 39.4004, 39.9534

Monochromacy



Original Color

43.0446, 39.3856, 37.2318

Achromatopsia

38.7082, 40.7240, 44.3485

Achromatomaly

40.0476, 40.0929, 41.7044

CSS Examples

Text

The CSS property to change the color of the text to XYZ 43.0446, 39.3856, 37.2318 is called "color". The color property can be set on classes, ids or directly on the HTML element.

This example shows how text in the color `rgb(204, 157, 157)` looks like.

```
.text, #text, p{  
    color:rgb(204, 157, 157)  
}
```

If you want to add a text shadow in that color use the text-shadow property, you can generate a text shadow directly with our [CSS Text Shadow Generator](#).

Here you see how black text with a 4 pixel rgb(204, 157, 157) colored shadow looks like.

```
.shadow{ text-shadow: 4px 4px 2px rgb(204, 157, 157) }
```

Border

The CSS property to change the border of an element to XYZ 43.0446, 39.3856, 37.2318 is called "border". The border property can be set on classes, ids or directly on the HTML element.

This example shows the color as border, it can be applied via the CSS property "border" or "border-color".

```
.border, #border, table{ border:4px solid rgb(204, 157, 157) }
```


If only the border color should be changed use the property border-color.

```
.border{ border-color:rgb(204, 157, 157) }
```

If you want to add a box shadow in that color use:

Here you see how a box with a 4 pixel rgb(204, 157, 157) colored shadow looks like.

```
.boxshadow{ -moz-box-shadow:4px 4px 4px  
4px rgb(204, 157, 157); -webkit-box-  
shadow:4px 4px 4px 4px rgb(204, 157, 157);  
box-shadow:4px 4px 4px 4px rgb(204, 157,  
157) }
```

Background

The CSS property to change the background color of an element to XYZ 43.0446, 39.3856, 37.2318 is called "background". The background property can be set on classes, ids or directly on the HTML element.

```
.background, #background, body{  
background: rgb(204, 157, 157) }
```

If only the background color should be changed can be used:

```
.background{ background-color: rgb(204,  
157, 157) }
```

This example shows the color as background, it is applied via the CSS property "background".

To optimize and compress your CSS code, you can use our [online CSS compressor and optimizer](#) based on csstidy. If you want to create a linear or radial gradient as background or border, check our [CSS Gradient Generator](#).

Hey! You found this booklet interesting? Support Converting Colors with the new Membership Option!

The pro membership hides all ads, plus gives you double the colors in the color bucket, and more awesome pro features!

[Learn more, Memberships starting at \\$2.50/m!](#)

**Follow me
on Twitter!**

@ConvertingColor