

Converting Colors

XYZ(43.1889, 42.2239, 39.4660)

Have a look what the booklet for
XYZ(43.1889, 42.2239, 39.4660)
contains.

XYZ(43.2006, 42.3142, 39.6088)	3
<i>Conversions</i>	4
<i>Details</i>	6
<i>Harmonies</i>	12
<i>Previews</i>	24
<i>Color Blindness Simulation</i>	28
<i>CSS Examples</i>	31

Color

**XYZ(43.2006, 42.3142,
39.6088)**

Conversions

Conversions Part 1

Format	Color
Hex	C4A8A1
RGB	196, 168, 161
RGB Percent	77%, 66%, 63%
CMY	0.2314, 0.3412, 0.3686
CMYK	0.00, 0.14, 0.18, 0.23
HSL	12°, 23%, 70%
HSV	12°, 18%, 77%
XYZ	43.2006, 42.3142, 39.6088
YIQ	175.5740, 18.9350, 3.7590

Conversions

Conversions Part 2

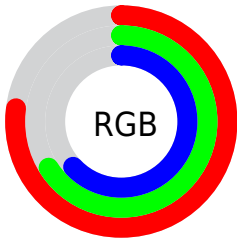
Format	Color
RYB	196, 170, 161
Decimal	12888225
CIELab	71.09, 9.06, 7.38
CIELCh	71, 11.683, 39.168
Yxy	42.3142, 0.3453, 0.3382
Android (android.graphics.Color)	4291078305 (0xFFC4A8A1)
YUV	175.5740, -7.1850, 17.9136
Hunter-Lab	65.0494, 4.7091, 9.4327

Details

The XYZ color **43.2006, 42.3142, 39.6088** is a light color, and the websafe version is hex **CC9999**. A complement of this color would be **42.8591, 47.9568, 59.2226**, and the grayscale version is **41.0753, 43.2145, 47.0605**.

A 20% lighter version of the original color is **79.2904, 78.6159, 75.9611**, and **20.2152, 19.3674, 17.4247** is the 20% darker color. If you saturate the color by 10%, you get **38.8841, 36.2335, 30.3005**, and if you desaturate by 10%, it is **48.1394, 49.2050, 50.4622**.

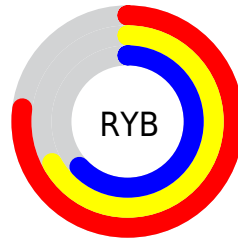
Distribution



Red (77%)

Green (66%)

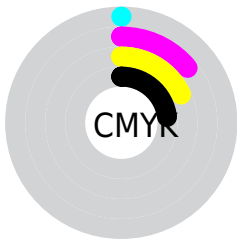
Blue (63%)



Red (77%)

Yellow (67%)

Blue (63%)

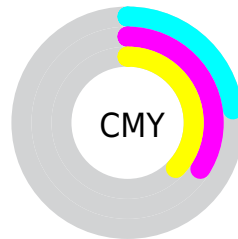


Cyan (0%)

Magenta (14%)

Yellow (18%)

Black (23%)



Cyan (23%)

Magenta (34%)

Yellow (37%)

Brightness & Saturation Gradients

These gradients show how the XYZ color 43.2006, 42.3142, 39.6088 changes by changing the brightness by 10 percent. The first figure shows a shift by +10% for each color and the second figure -10%.

Similar to the brightness gradients but the following saturation gradients show a change of the XYZ color 43.2006, 42.3142, 39.6088 by changing the saturation by 10% instead.


 43.2006, 42.3142,
39.6088


 43.2006, 42.3142,
39.6088

350.3436,
355.7838, 359.9749

 30.2377, 29.3474,
26.9222


 79.2673, 78.6749,
75.7980

 20.1681, 19.3438,
17.2829

 103.1019,
102.8377, 100.1377

 12.6263, 11.9189,
10.2723

131.2911,
131.5011, 129.1988

 7.2469, 6.6885,
5.4719

164.2002,
165.0498, 163.3999

 3.6647, 3.2681,
2.4632

202.1947,
203.8680, 203.1595

 1.5142, 1.2732,
0.8206

245.6398,

 0.3355, 0.1203,

248.3401, 248.8962

0.0000

294.9010,
298.8506, 301.0285

■ 0.0000, 0.0000,
0.0000

■ 43.2006, 42.3142,
39.6088

■ 43.2006, 42.3142,
39.6088

■ 38.8841, 36.2335,
30.3005

■ 48.1394, 49.2050,
50.4622

■ 35.1614, 30.9276,
22.4643

■ 53.7206, 56.9285,
62.9240

■ 32.0072, 26.3667,
16.0251

■ 59.9675, 65.5134,
77.0571

■ 29.3925, 22.5170,
10.9002

■ 66.9013, 74.9852,
92.9203

■ 27.2861, 19.3422,
6.9981

■ 73.8912, 85.1080,
107.1408

■ 25.6531, 16.8023,
4.2154

■ 76.5751, 90.4758,
108.0354

■ 24.4540, 14.8532,
2.4314

■ 23.6368, 13.4424,
1.4695

■ 23.4979, 13.2014,
1.3096

Harmonies

Analogous

The Analogous color harmony consists of three colors that are next to each other on the color wheel.



44.0407, 42.3142, 44.3807



43.2006, 42.3142, 39.6088



41.5687, 42.3142, 36.7347

Triad

The Triadic color harmony groups three colors that are evenly spaced from another and form a triangle on the color wheel.



43.2006, 42.3142, 39.6088



36.8098, 42.3142, 42.3531



40.8196, 42.3142, 57.5266

Complementary

The Complementary color scheme is a pair of colors which are on the opposite of each other on the color wheel.



43.2006, 42.3142, 39.6088



42.8591, 47.9568, 59.2226

Split Complementary

Split-complementary colors differ from the complementary color scheme. The scheme consists of three colors, the original color and two neighbors of the complement color.



38.8976, 42.3142, 56.8732



43.2006, 42.3142, 39.6088



36.6239, 42.3142, 47.8078

Square

The Square scheme is like the rectangle color scheme, but the four colors are evenly spaced on the color wheel.



43.2006, 42.3142, 39.6088



37.8929, 42.3142, 38.2278



37.3767, 42.3142, 53.2048



42.6371, 42.3142, 54.9241

Rectangle

The Rectangle color scheme consists of four colors that form a rectangle on the color wheel.



43.2006, 42.3142, 39.6088



40.2730, 42.3142, 36.1344



37.3767, 42.3142, 53.2048



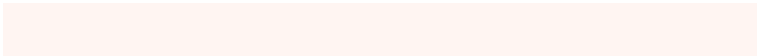
40.1639, 42.3142, 57.6847

Sweetspot

The Sweet Spot groups the original color and five complimentary colors.



43.2018, 42.3161, 39.6097



89.8969, 92.8705, 97.3891



44.6956, 40.9002, 53.6834



19.0919, 19.6704, 20.5121



0.0000, 0.0000, 0.0000



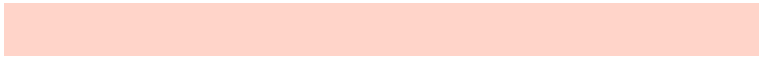
20.3446, 21.4041, 23.3091

Same Dimension

The Same Dimension uses a secret algorithm to generate beautiful new colors.



43.2018, 42.3161, 39.6097



75.4205, 72.6679, 65.5875



46.6522, 49.2170, 40.7598



10.2328, 10.3970, 10.5294



15.1480, 8.5817, 0.8580



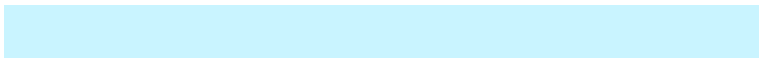
0.7040, 0.4698, 0.0536

Inverse Universe

The Inverse Universe completely reimagines the original color for something new.



42.8591, 47.9568, 59.2226



74.6950, 84.5728, 106.9951



39.3198, 40.8783, 58.0428



10.1918, 11.0750, 12.8853



14.1873, 18.1310, 36.3085



0.6576, 0.8725, 1.5836

Previews

White Background



This preview shows how the XYZ color 43.2006, 42.3142, 39.6088 looks on a white background.

Color Contrast Check

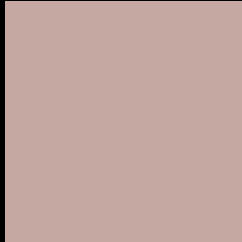
Large Text (above 18pt) WCAG AA × Fail

Any Text WCAG AA × Fail

Large Text (above 18pt) WCAG AAA × Fail

Any Text WCAG AAA × Fail

Black Background



This preview shows how the XYZ color 43.2006, 42.3142, 39.6088 looks on a black background.

Color Contrast Check

Large Text (above 18pt) WCAG AA ✓ Pass

Any Text WCAG AA ✓ Pass

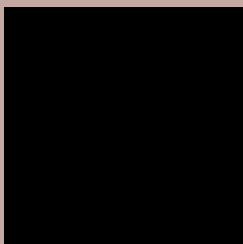
Large Text (above 18pt) WCAG AAA ✓ Pass

Any Text WCAG AAA ✓ Pass

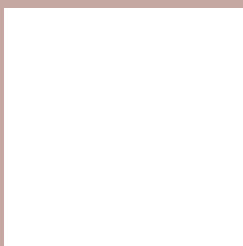
If you want to check with other color combinations, try the [Color Contrast Checker](#).

XYZ 43.2006, 42.3142, 39.6088

Background



This preview shows how black text looks on a background with the XYZ color 43.2006, 42.3142, 39.6088.



This preview shows how white text looks on a background with the XYZ color 43.2006, 42.3142,

39.6088.

Color Blindness Simulation

Color vision deficiency is a very complex topic, and I could not describe the different causes any better than Wikipedia does, so if you want to learn more, you should check out their [article about color blindness](#).

Dichromacy



Original Color

43.2006, 42.3142, 39.6088

Protanopia

40.4668, 42.2708, 41.1482

Deuteranopia

43.2006, 42.3142, 39.6088



Tritanopia

44.7797, 42.1304, 47.8913

Trichromacy



Original Color

43.2006, 42.3142, 39.6088

Protanomaly

41.4235, 42.2093, 40.6143

Deuteranomaly

43.2006, 42.3142, 39.6088

Tritanomaly

44.1086, 42.1213, 44.8352

Monochromacy



Original Color

43.2006, 42.3142, 39.6088

Achromatopsia

41.2663, 43.4154, 47.2793

Achromatomaly

41.8227, 42.8947, 44.6033

CSS Examples

Text

The CSS property to change the color of the text to XYZ 43.2006, 42.3142, 39.6088 is called "color". The color property can be set on classes, ids or directly on the HTML element.

This example shows how text in the color `rgb(196, 168, 161)` looks like.

```
.text, #text, p{  
    color:rgb(196, 168, 161)  
}
```

If you want to add a text shadow in that color use the text-shadow property, you can generate a text shadow directly with our [CSS Text Shadow Generator](#).

Here you see how black text with a 4 pixel rgb(196, 168, 161) colored shadow looks like.

```
.shadow{ text-shadow: 4px 4px 2px rgb(196, 168, 161) }
```

Border

The CSS property to change the border of an element to XYZ 43.2006, 42.3142, 39.6088 is called "border". The border property can be set on classes, ids or directly on the HTML element.

This example shows the color as border, it can be applied via the CSS property "border" or "border-color".

```
.border, #border, table{ border:4px solid rgb(196, 168, 161) }
```


If only the border color should be changed use the property border-color.

```
.border{ border-color:rgb(196, 168, 161) }
```

If you want to add a box shadow in that color use:

Here you see how a box with a 4 pixel rgb(196, 168, 161) colored shadow looks like.

```
.boxshadow{ -moz-box-shadow:4px 4px 4px  
4px rgb(196, 168, 161); -webkit-box-  
shadow:4px 4px 4px 4px rgb(196, 168, 161);  
box-shadow:4px 4px 4px 4px rgb(196, 168,  
161) }
```

Background

The CSS property to change the background color of an element to XYZ 43.2006, 42.3142, 39.6088 is called "background". The background property can be set on classes, ids or directly on the HTML element.

```
.background, #background, body{  
background: rgb(196, 168, 161) }
```

If only the background color should be changed can be used:

```
.background{ background-color: rgb(196,  
168, 161) }
```

This example shows the color as background, it is applied via the CSS property "background".

To optimize and compress your CSS code, you can use our [online CSS compressor and optimizer](#) based on csstidy. If you want to create a linear or radial gradient as background or border, check our [CSS Gradient Generator](#).

Hey! You found this booklet interesting? Support Converting Colors with the new Membership Option!

The pro membership hides all ads, plus gives you double the colors in the color bucket, and more awesome pro features!

[Learn more, Memberships starting at \\$2.50/m!](#)

**Follow me
on Twitter!**

@ConvertingColor