

Converting Colors

XYZ(43.2215, 40.0467, 34.9562)

Have a look what the booklet for
XYZ(43.2215, 40.0467, 34.9562)
contains.

XYZ(43.2425, 40.0424, 35.1556)	3
<i>Conversions</i>	4
<i>Details</i>	6
<i>Harmonies</i>	12
<i>Previews</i>	24
<i>Color Blindness Simulation</i>	28
<i>CSS Examples</i>	31

Color

**XYZ(43.2425, 40.0424,
35.1556)**

Conversions

Conversions Part 1

Format	Color
Hex	CD9F98
RGB	205, 159, 152
RGB Percent	80%, 62%, 60%
CMY	0.1961, 0.3765, 0.4039
CMYK	0.00, 0.22, 0.26, 0.20
HSL	8°, 35%, 70%
HSV	8°, 26%, 80%
XYZ	43.2425, 40.0424, 35.1556
YIQ	171.9560, 29.6630, 7.5750

Conversions

Conversions Part 2

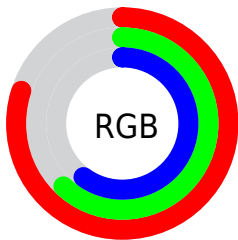
Format	Color
R _Y B	205, 160, 152
Decimal	13475736
CIE Lab	69.50, 16.02, 10.21
CIE LCh	69, 18.998, 32.496
Yxy	40.0424, 0.3651, 0.3381
Android (android.graphics.Color)	4291665816 (0xFFCD9F98)
YUV	171.9560, -9.8383, 28.9796
Hunter-Lab	63.2791, 11.2417, 11.3559

Details

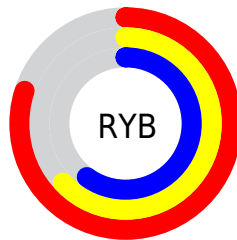
The XYZ color **43.2425, 40.0424, 35.1556** is a light color, and the websafe version is hex **CC9999**. A complement of this color would be **44.1619, 51.4700, 65.3650**, and the grayscale version is **39.2290, 41.2720, 44.9452**.

A 20% lighter version of the original color is **76.4271, 73.8094, 68.6110**, and **20.1843, 17.9390, 14.7107** is the 20% darker color. If you saturate the color by 10%, you get **38.8642, 33.7445, 26.1162**, and if you desaturate by 10%, it is **48.3535, 47.3408, 45.8718**.

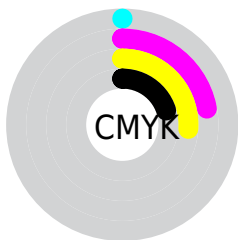
Distribution



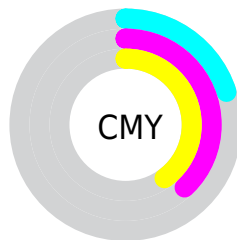
- Red (80%)
- Green (62%)
- Blue (60%)



- Red (80%)
- Yellow (63%)
- Blue (60%)



- Cyan (0%)
- Magenta (22%)
- Yellow (26%)
- Black (20%)





- Cyan (20%)
- Magenta (38%)
- Yellow (40%)

Brightness & Saturation Gradients


These gradients show how the XYZ color 43.2425, 40.0424, 35.1556 changes by changing the brightness by 10 percent. The first figure shows a shift by +10% for each color and the second figure -10%.


Similar to the brightness gradients but the following saturation gradients show a change of the XYZ color 43.2425, 40.0424, 35.1556 by changing the saturation by 10% instead.


 43.2425, 40.0424,
35.1556


 43.2425, 40.0424,
35.1556


350.5127,
346.3022, 340.1797

 30.2708, 27.5716,
23.4982


 79.3301, 75.2281,
68.8811

 20.1933, 18.0030,
14.7531


 103.1767, 98.7117,
91.7862

 12.6447, 10.9521,
8.5016

131.3790,
126.6352, 119.2778

 7.2597, 6.0347,
4.3252

164.3022,
159.3827, 151.7742

 3.6728, 2.8662,
1.8054

202.3119,
197.3388, 189.6941

 1.5187, 1.0623,
0.4315

245.7733,

 0.3385, 0.0000,

240.8878, 233.4559

0.0000

295.0518,
290.4142, 283.4783

■ 0.0000, 0.0000,
0.0000

■ 43.2425, 40.0424,
35.1556

■ 43.2425, 40.0424,
35.1556

■ 38.8642, 33.7445,
26.1162

■ 48.3535, 47.3408,
45.8718

■ 35.1818, 28.3980,
18.6663

■ 54.2255, 55.6749,
58.3412

■ 32.1600, 23.9584,
12.7145

■ 60.8891, 65.0850,
72.6384

■ 29.7592, 20.3748,
8.1588

■ 68.3723, 75.6075,
88.8331

■ 27.9353, 17.5918,
4.8847

■ 76.7019, 87.2773,
106.9911

■ 26.6383, 15.5471,
2.7594

■ 78.9870, 91.7192,
108.1483

■ 25.8090, 14.1688,
1.6187

■ 25.5710, 13.7672,
1.3096

Harmonies

Analogous

The Analogous color harmony consists of three colors that are next to each other on the color wheel.



44.2476, 40.0424, 42.8693



43.2425, 40.0424, 35.1556



40.8425, 40.0424, 30.2915

Triad

The Triadic color harmony groups three colors that are evenly spaced from another and form a triangle on the color wheel.



43.2425, 40.0424, 35.1556



33.0734, 40.0424, 36.2688



38.3160, 40.0424, 62.7019

Complementary

The Complementary color scheme is a pair of colors which are on the opposite of each other on the color wheel.



43.2425, 40.0424, 35.1556



44.1619, 51.4700, 65.3650

Split Complementary

Split-complementary colors differ from the complementary color scheme. The scheme consists of three colors, the original color and two neighbors of the complement color.



35.4051, 40.0424, 60.3256



43.2425, 40.0424, 35.1556



32.4763, 40.0424, 44.3377

Square

The Square scheme is like the rectangle color scheme, but the four colors are evenly spaced on the color wheel.



43.2425, 40.0424, 35.1556



34.9837, 40.0424, 30.8711



33.3074, 40.0424, 53.2972



41.3097, 40.0424, 59.4186

Rectangle

The Rectangle color scheme consists of four colors that form a rectangle on the color wheel.



43.2425, 40.0424, 35.1556



38.8330, 40.0424, 28.9312



33.3074, 40.0424, 53.2972



37.2956, 40.0424, 62.5385

Sweetspot

The Sweet Spot groups the original color and five complimentary colors.



43.2436, 40.0443, 35.1564



86.5476, 87.9749, 90.7139



46.6930, 39.5511, 59.0948



18.2028, 18.3739, 18.7314



0.0000, 0.0000, 0.0000



20.3446, 21.4041, 23.3091

Same Dimension

The Same Dimension uses a secret algorithm to generate beautiful new colors.



43.2436, 40.0443, 35.1564



66.7141, 59.6777, 49.0511



48.1275, 49.8121, 36.7844



11.3299, 11.4487, 11.6921



15.9586, 8.6501, 0.8285



0.8634, 0.5266, 0.0561

Inverse Universe

The Inverse Universe completely reimagines the original color for something new.



44.1619, 51.4700, 65.3650



68.4607, 81.4793, 106.7266



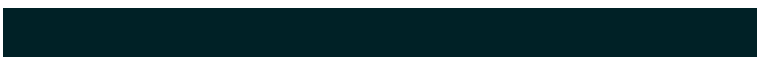
38.7817, 40.7094, 63.5716



11.4119, 12.4643, 14.3747



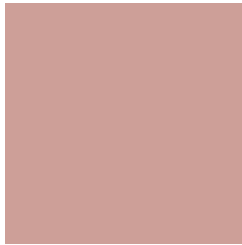
16.8100, 22.6440, 39.4410



0.9032, 1.2401, 2.0467

Previews

White Background



This preview shows how the XYZ color 43.2425, 40.0424, 35.1556 looks on a white background.

Color Contrast Check

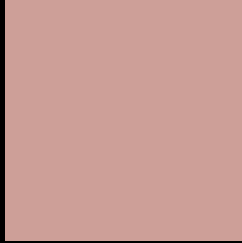
Large Text (above 18pt) WCAG AA × Fail

Any Text WCAG AA × Fail

Large Text (above 18pt) WCAG AAA × Fail

Any Text WCAG AAA × Fail

Black Background



This preview shows how the XYZ color 43.2425, 40.0424, 35.1556 looks on a black background.

Color Contrast Check

Large Text (above 18pt) WCAG AA ✓ Pass

Any Text WCAG AA ✓ Pass

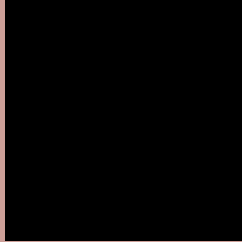
Large Text (above 18pt) WCAG AAA ✓ Pass

Any Text WCAG AAA ✓ Pass

If you want to check with other color combinations, try the [Color Contrast Checker](#).

XYZ 43.2425, 40.0424, 35.1556

Background



This preview shows how black text looks on a background with the XYZ color 43.2425, 40.0424, 35.1556.



This preview shows how white text looks on a background with the XYZ color 43.2425, 40.0424,

Color Blindness Simulation

Color vision deficiency is a very complex topic, and I could not describe the different causes any better than Wikipedia does, so if you want to learn more, you should check out their [article about color blindness](#).

Dichromacy



Original Color

43.2425, 40.0424, 35.1556

Protanopia

38.1783, 40.0404, 37.6146

Deuteranopia

40.8537, 40.1227, 34.8694



Tritanopia

44.7820, 39.9069, 42.8787

Trichromacy



Original Color

43.2425, 40.0424, 35.1556

Protanomaly

39.8650, 39.8416, 36.5994

Deuteranomaly

41.5322, 39.9453, 34.7994

Tritanomaly

44.1214, 39.8801, 40.0225

Monochromacy



Original Color

43.2425, 40.0424, 35.1556

Achromatopsia

39.2122, 41.2543, 44.9259

Achromatomaly

40.3774, 40.5444, 41.2950

CSS Examples

Text

The CSS property to change the color of the text to XYZ 43.2425, 40.0424, 35.1556 is called "color". The color property can be set on classes, ids or directly on the HTML element.

This example shows how text in the color `rgb(205, 159, 152)` looks like.

```
.text, #text, p{  
    color:rgb(205, 159, 152)  
}
```

If you want to add a text shadow in that color use the text-shadow property, you can generate a text shadow directly with our [CSS Text Shadow Generator](#).

Here you see how black text with a 4 pixel rgb(205, 159, 152) colored shadow looks like.

```
.shadow{ text-shadow: 4px 4px 2px rgb(205, 159, 152) }
```

Border

The CSS property to change the border of an element to XYZ 43.2425, 40.0424, 35.1556 is called "border". The border property can be set on classes, ids or directly on the HTML element.

This example shows the color as border, it can be applied via the CSS property "border" or "border-color".

```
.border, #border, table{ border:4px solid rgb(205, 159, 152) }
```


If only the border color should be changed use the property `border-color`.

```
.border{ border-color:rgb(205, 159, 152) }
```

If you want to add a box shadow in that color use:

Here you see how a box with a 4 pixel `rgb(205, 159, 152)` colored shadow looks like.

```
.boxshadow{ -moz-box-shadow:4px 4px 4px  
4px rgb(205, 159, 152); -webkit-box-  
shadow:4px 4px 4px 4px rgb(205, 159, 152);  
box-shadow:4px 4px 4px 4px rgb(205, 159,  
152) }
```

Background

The CSS property to change the background color of an element to XYZ 43.2425, 40.0424, 35.1556 is called "background". The background property can be set on classes, ids or directly on the HTML element.

```
.background, #background, body{  
background: rgb(205, 159, 152) }
```

If only the background color should be changed can be used:

```
.background{ background-color: rgb(205,  
159, 152) }
```

This example shows the color as background, it is applied via the CSS property "background".

To optimize and compress your CSS code, you can use our [online CSS compressor and optimizer](#) based on csstidy. If you want to create a linear or radial gradient as background or border, check our [CSS Gradient Generator](#).

Hey! You found this booklet interesting? Support Converting Colors with the new Membership Option!

The pro membership hides all ads, plus gives you double the colors in the color bucket, and more awesome pro features!

[Learn more, Memberships starting at \\$2.50/m!](#)

**Follow me
on Twitter!**

@ConvertingColor