

Converting Colors

XYZ(43.2535, 40.8048, 36.4784)

Have a look what the booklet for
XYZ(43.2535, 40.8048, 36.4784)
contains.

XYZ(43.1938, 40.7638, 36.6020)	3
<i>Conversions</i>	4
<i>Details</i>	6
<i>Harmonies</i>	12
<i>Previews</i>	24
<i>Color Blindness Simulation</i>	28
<i>CSS Examples</i>	31

Color

**XYZ(43.1938, 40.7638,
36.6020)**

Conversions

Conversions Part 1

Format	Color
Hex	CAA29B
RGB	202, 162, 155
RGB Percent	79%, 64%, 61%
CMY	0.2078, 0.3647, 0.3922
CMYK	0.00, 0.20, 0.23, 0.21
HSL	9°, 31%, 70%
HSV	9°, 23%, 79%
XYZ	43.1938, 40.7638, 36.6020
YIQ	173.1620, 26.0870, 6.3030

Conversions

Conversions Part 2

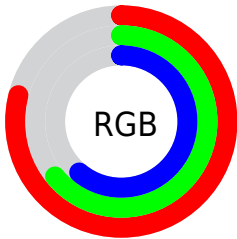
Format	Color
R_{YB}	202, 163, 155
Decimal	13279899
CIE _{Lab}	70.01, 13.68, 9.23
CIE _{LCh}	70, 16.502, 34.010
Yxy	40.7638, 0.3583, 0.3381
Android (android.graphics.Color)	4291469979 (0xFFCAA29B)
YUV	173.1620, -8.9539, 25.2909
Hunter-Lab	63.8465, 9.0283, 10.7027

Details

The XYZ color **43.1938, 40.7638, 36.6020** is a light color, and the websafe version is hex **CC9999**. A complement of this color would be **43.6927, 50.2614, 63.2758**, and the grayscale version is **39.8390, 41.9137, 45.6440**.

A 20% lighter version of the original color is **77.5615, 75.4892, 70.8045**, and **20.1072, 18.3544, 15.5797** is the 20% darker color. If you saturate the color by 10%, you get **38.8136, 34.4947, 27.4608**, and if you desaturate by 10%, it is **48.2740, 47.9780, 47.3775**.

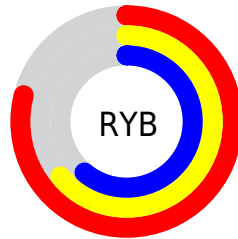
Distribution



Red (79%)

Green (64%)

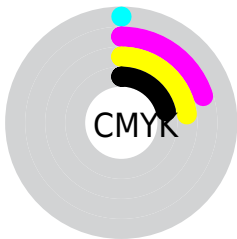
Blue (61%)



Red (79%)

Yellow (64%)

Blue (61%)

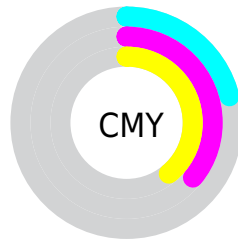


Cyan (0%)

Magenta (20%)

Yellow (23%)

Black (21%)



Cyan (21%)


Magenta (36%)


Yellow (39%)

Brightness & Saturation Gradients


These gradients show how the XYZ color 43.1938, 40.7638, 36.6020 changes by changing the brightness by 10 percent. The first figure shows a shift by +10% for each color and the second figure -10%.


Similar to the brightness gradients but the following saturation gradients show a change of the XYZ color 43.1938, 40.7638, 36.6020 by changing the saturation by 10% instead.


 43.1938, 40.7638,
36.6020


 43.1938, 40.7638,
36.6020


350.3162,
349.3325, 346.7008

 30.2324, 28.1346,
24.6061

 79.2571, 76.3252,
71.1397

 20.1640, 18.4271,
15.5675


 103.0897,
100.0262, 94.5186

 12.6233, 11.2571,
9.0676


131.2768,
128.1865, 122.5289

 7.2448, 6.2400,
4.6879

164.1836,
161.1906, 155.5892

 3.6634, 2.9916,
2.0098

202.1757,
199.4228, 194.1180

 1.5135, 1.1273,
0.5613

245.6182,

 0.3350, 0.0011,

243.2676, 238.5339

0.0000

294.8766,
293.1094, 289.2553

■ 0.0000, 0.0000,
0.0000

■ 43.1938, 40.7638,
36.6020

■ 43.1938, 40.7638,
36.6020

■ 38.8136, 34.4947,
27.4608

■ 48.2740, 47.9780,
47.3775

■ 35.0992, 29.1261,
19.8716

■ 54.0797, 56.1685,
59.8593

■ 32.0187, 24.6181,
13.7485

■ 60.6393, 65.3718,
74.1178

■ 29.5360, 20.9257,
8.9965

■ 67.9785, 75.6210,
90.2191

■ 27.6114, 17.9996,
5.5092

■ 75.9604, 86.8830,
107.3743

■ 26.2002, 15.7852,
3.1643

■ 78.1672, 91.2966,
108.1099

■ 25.2503, 14.2203,
1.8154

■ 24.8240, 13.4903,
1.2955

Harmonies

Analogous

The Analogous color harmony consists of three colors that are next to each other on the color wheel.



44.1385, 40.7638, 43.3567



43.1938, 40.7638, 36.6020



41.0566, 40.7638, 32.3536

Triad

The Triadic color harmony groups three colors that are evenly spaced from another and form a triangle on the color wheel.



43.1938, 40.7638, 36.6020



34.2777, 40.7638, 38.2031



39.1077, 40.7638, 60.8677

Complementary

The Complementary color scheme is a pair of colors which are on the opposite of each other on the color wheel.



43.1938, 40.7638, 36.6020



43.6927, 50.2614, 63.2758

Split Complementary

Split-complementary colors differ from the complementary color scheme. The scheme consists of three colors, the original color and two neighbors of the complement color.



36.5214, 40.7638, 59.0806



43.1938, 40.7638, 36.6020



33.8093, 40.7638, 45.4291

Square

The Square scheme is like the rectangle color scheme, but the four colors are evenly spaced on the color wheel.



43.1938, 40.7638, 36.6020



35.9223, 40.7638, 33.2001



34.6122, 40.7638, 53.1994



41.7114, 40.7638, 57.8356

Rectangle

The Rectangle color scheme consists of four colors that form a rectangle on the color wheel.



43.1938, 40.7638, 36.6020



39.2872, 40.7638, 31.2190



34.6122, 40.7638, 53.1994



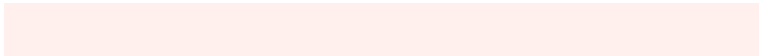
38.2073, 40.7638, 60.8127

Sweetspot

The Sweet Spot groups the original color and five complimentary colors.



43.1949, 40.7657, 36.6028



87.6522, 89.5916, 92.9089



46.0122, 39.9731, 57.3562



18.6310, 18.9928, 19.6063



0.0000, 0.0000, 0.0000



20.3446, 21.4041, 23.3091

Same Dimension

The Same Dimension uses a secret algorithm to generate beautiful new colors.



43.1949, 40.7657, 36.6028



69.1952, 63.3946, 53.7173



47.5739, 49.5238, 38.0625



11.3450, 11.4790, 11.6972



16.0148, 8.7625, 0.8473



0.8704, 0.5406, 0.0585

Inverse Universe

The Inverse Universe completely reimagines the original color for something new.



43.6927, 50.2614, 63.2758



70.1805, 82.2791, 106.7903



38.9756, 40.8272, 61.7034



11.3953, 12.4310, 14.3692



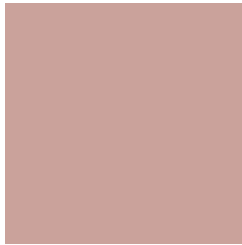
16.3922, 21.8083, 39.3017



0.8853, 1.2044, 2.0408

Previews

White Background



This preview shows how the XYZ color 43.1938, 40.7638, 36.6020 looks on a white background.

Color Contrast Check

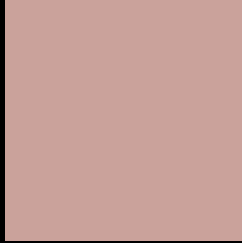
Large Text (above 18pt) WCAG AA × Fail

Any Text WCAG AA × Fail

Large Text (above 18pt) WCAG AAA × Fail

Any Text WCAG AAA × Fail

Black Background



This preview shows how the XYZ color 43.1938, 40.7638, 36.6020 looks on a black background.

Color Contrast Check

Large Text (above 18pt) WCAG AA ✓ Pass

Any Text WCAG AA ✓ Pass

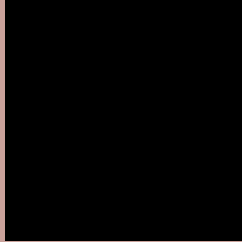
Large Text (above 18pt) WCAG AAA ✓ Pass

Any Text WCAG AAA ✓ Pass

If you want to check with other color combinations, try the [Color Contrast Checker](#).

XYZ 43.1938, 40.7638, 36.6020

Background



This preview shows how black text looks on a background with the XYZ color 43.1938, 40.7638, 36.6020.



This preview shows how white text looks on a background with the XYZ color 43.1938, 40.7638,

Color Blindness Simulation

Color vision deficiency is a very complex topic, and I could not describe the different causes any better than Wikipedia does, so if you want to learn more, you should check out their [article about color blindness](#).

Dichromacy



Original Color

43.1938, 40.7638, 36.6020

Protanopia

39.0395, 41.0110, 39.1160

Deuteranopia

41.5360, 40.7127, 36.2410



Tritanopia

44.7464, 40.6122, 44.5103

Trichromacy



Original Color

43.1938, 40.7638, 36.6020

Protanomaly

40.4239, 40.9130, 38.1142

Deuteranomaly

42.1342, 40.7543, 36.2175

Tritanomaly

44.0823, 40.5913, 41.5879

Monochromacy



Original Color

43.1938, 40.7638, 36.6020

Achromatopsia

39.7200, 41.7885, 45.5077

Achromatomaly

40.8381, 41.3195, 41.8994

CSS Examples

Text

The CSS property to change the color of the text to XYZ 43.1938, 40.7638, 36.6020 is called "color". The color property can be set on classes, ids or directly on the HTML element.

This example shows how text in the color `rgb(202, 162, 155)` looks like.

```
.text, #text, p{  
    color:rgb(202, 162, 155)  
}
```

If you want to add a text shadow in that color use the text-shadow property, you can generate a text shadow directly with our [CSS Text Shadow Generator](#).

Here you see how black text with a 4 pixel rgb(202, 162, 155) colored shadow looks like.

```
.shadow{ text-shadow: 4px 4px 2px rgb(202, 162, 155) }
```

Border

The CSS property to change the border of an element to XYZ 43.1938, 40.7638, 36.6020 is called "border". The border property can be set on classes, ids or directly on the HTML element.

This example shows the color as border, it can be applied via the CSS property "border" or "border-color".

```
.border, #border, table{ border:4px solid rgb(202, 162, 155) }
```


If only the border color should be changed use the property `border-color`.

```
.border{ border-color:rgb(202, 162, 155) }
```

If you want to add a box shadow in that color use:

Here you see how a box with a 4 pixel `rgb(202, 162, 155)` colored shadow looks like.

```
.boxshadow{ -moz-box-shadow:4px 4px 4px  
4px rgb(202, 162, 155); -webkit-box-  
shadow:4px 4px 4px 4px rgb(202, 162, 155);  
box-shadow:4px 4px 4px 4px rgb(202, 162,  
155) }
```

Background

The CSS property to change the background color of an element to XYZ 43.1938, 40.7638, 36.6020 is called "background". The background property can be set on classes, ids or directly on the HTML element.

```
.background, #background, body{  
background: rgb(202, 162, 155) }
```

If only the background color should be changed can be used:

```
.background{ background-color: rgb(202,  
162, 155) }
```

This example shows the color as background, it is applied via the CSS property "background".

To optimize and compress your CSS code, you can use our [online CSS compressor and optimizer](#) based on csstidy. If you want to create a linear or radial gradient as background or border, check our [CSS Gradient Generator](#).

Hey! You found this booklet interesting? Support Converting Colors with the new Membership Option!

The pro membership hides all ads, plus gives you double the colors in the color bucket, and more awesome pro features!

[Learn more, Memberships starting at \\$2.50/m!](#)

**Follow me
on Twitter!**

@ConvertingColor