

Converting Colors

XYZ(43.2663, 41.5556, 38.5415)

Have a look what the booklet for
XYZ(43.2663, 41.5556, 38.5415)
contains.

XYZ(43.2663, 41.5556, 38.5415)	3
<i>Conversions</i>	4
<i>Details</i>	6
<i>Harmonies</i>	12
<i>Previews</i>	24
<i>Color Blindness Simulation</i>	28
<i>CSS Examples</i>	31

Color

**XYZ(43.2663, 41.5556,
38.5415)**

Conversions

Conversions Part 1

Format	Color
Hex	C7A59F
RGB	199, 165, 159
RGB Percent	78%, 65%, 62%
CMY	0.2196, 0.3529, 0.3765
CMYK	0.00, 0.17, 0.20, 0.22
HSL	9°, 26%, 70%
HSV	9°, 20%, 78%
XYZ	43.2663, 41.5556, 38.5415
YIQ	174.4820, 22.1900, 5.3420

Conversions

Conversions Part 2

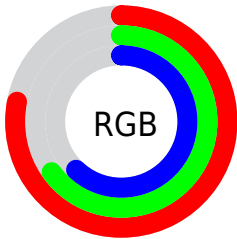
Format	Color
R_{YB}	199, 166, 159
Decimal	13084063
CIE _{Lab}	70.56, 11.51, 7.77
CIE _{LCh}	71, 13.887, 34.024
Yxy	41.5556, 0.3507, 0.3369
Android (android.graphics.Color)	4291274143 (0xFFC7A59F)
YUV	174.4820, -7.6326, 21.5023
Hunter-Lab	64.4636, 6.9932, 9.6763

Details

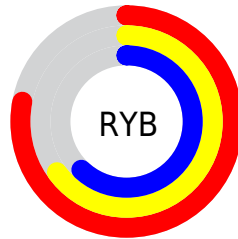
The XYZ color **43.2663, 41.5556, 38.5415** is a light color, and the websafe version is hex **CC9999**. A complement of this color would be **43.6763, 49.6330, 61.3112**, and the grayscale version is **40.5111, 42.6208, 46.4141**.

A 20% lighter version of the original color is **78.9708, 77.3014, 74.3768**, and **20.2890, 18.9127, 16.7685** is the 20% darker color. If you saturate the color by 10%, you get **38.8252, 35.2179, 29.2163**, and if you desaturate by 10%, it is **48.3911, 48.8152, 49.4672**.

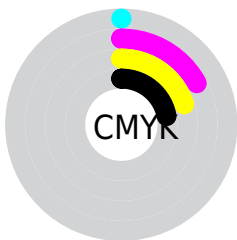
Distribution



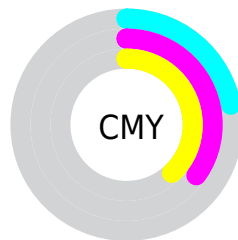
- Red (78%)
- Green (65%)
- Blue (62%)



- Red (78%)
- Yellow (65%)
- Blue (62%)



- Cyan (0%)
- Magenta (17%)
- Yellow (20%)
- Black (22%)





- Cyan (22%)
- Magenta (35%)
- Yellow (38%)

Brightness & Saturation Gradients


These gradients show how the XYZ color 43.2663, 41.5556, 38.5415 changes by changing the brightness by 10 percent. The first figure shows a shift by +10% for each color and the second figure -10%.


Similar to the brightness gradients but the following saturation gradients show a change of the XYZ color 43.2663, 41.5556, 38.5415 by changing the saturation by 10% instead.


 43.2663, 41.5556,
38.5415


 43.2663, 41.5556,
38.5415


350.6088,
352.6374, 355.3048

 30.2895, 28.7535,
26.0981


 79.3658, 77.5266,
74.1500

 20.2076, 18.8944,
16.6707


 103.2192,
101.4643, 98.1522

 12.6552, 11.5940,
9.8405


131.4289,
129.8826, 126.8444

 7.2669, 6.4679,
5.1891

164.3602,
163.1659, 160.6452

 3.6774, 3.1316,
2.2980

202.3785,
201.6986, 199.9731

 1.5213, 1.2008,
0.7301

245.8491,

 0.3402, 0.0624,

245.8652, 245.2466

0.0000

295.1374,
296.0500, 296.8843

■ 0.0000, 0.0000,
0.0000

■ 43.2663, 41.5556,
38.5415

■ 43.2663, 41.5556,
38.5415

■ 38.8252, 35.2179,
29.2163

■ 48.3911, 48.8152,
49.4672

■ 35.0355, 29.7596,
21.4138

■ 54.2236, 57.0256,
62.0611

■ 31.8672, 25.1435,
15.0536

■ 60.7905, 66.2216,
76.3899

■ 29.2866, 21.3273,
10.0469

■ 68.1164, 76.4345,
92.5161

■ 27.2567, 18.2651,
6.2951

■ 75.6555, 87.4666,
107.5030

■ 25.7364, 15.9063,
3.6858

■ 77.3633, 90.8822,
108.0723

■ 24.6780, 14.1939,
2.0870

■ 24.0143, 13.0641,
1.2559

Harmonies

Analogous

The Analogous color harmony consists of three colors that are next to each other on the color wheel.



44.0619, 41.5556, 44.3664



43.2663, 41.5556, 38.5415



41.4606, 41.5556, 34.8161

Triad

The Triadic color harmony groups three colors that are evenly spaced from another and form a triangle on the color wheel.



43.2663, 41.5556, 38.5415



35.6640, 41.5556, 39.9375



39.8076, 41.5556, 59.0514

Complementary

The Complementary color scheme is a pair of colors which are on the opposite of each other on the color wheel.



43.2663, 41.5556, 38.5415



43.6763, 49.6330, 61.3112

Split Complementary

Split-complementary colors differ from the complementary color scheme. The scheme consists of three colors, the original color and two neighbors of the complement color.



37.5971, 41.5556, 57.5773



43.2663, 41.5556, 38.5415



35.2595, 41.5556, 46.1391

Square

The Square scheme is like the rectangle color scheme, but the four colors are evenly spaced on the color wheel.



43.2663, 41.5556, 38.5415



37.0808, 41.5556, 35.5657



35.9539, 41.5556, 52.6883



42.0167, 41.5556, 56.5427

Rectangle

The Rectangle color scheme consists of four colors that form a rectangle on the color wheel.



43.2663, 41.5556, 38.5415



39.9583, 41.5556, 33.8122



35.9539, 41.5556, 52.6883



39.0400, 41.5556, 59.0066

Sweetspot

The Sweet Spot groups the original color and five complimentary colors.



43.2674, 41.5575, 38.5424



88.6747, 91.0356, 95.1026



45.5773, 40.7891, 55.9233



18.8376, 19.2847, 20.0487



0.0000, 0.0000, 0.0000



20.3446, 21.4041, 23.3091

Same Dimension

The Same Dimension uses a secret algorithm to generate beautiful new colors.



43.2674, 41.5575, 38.5424



72.3078, 67.8514, 60.2068



47.1605, 49.3436, 39.8401



10.7602, 10.8896, 11.0975



15.4822, 8.4816, 0.8211



0.7753, 0.4860, 0.0529

Inverse Universe

The Inverse Universe completely reimagines the original color for something new.



43.6763, 49.6330, 61.3112



73.1460, 84.4612, 107.0552



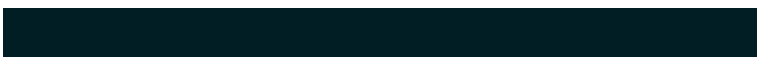
39.5509, 41.3821, 59.9360



10.8059, 11.7858, 13.6228



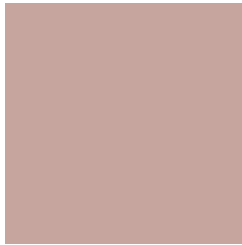
15.8186, 21.0311, 37.9700



0.7868, 1.0715, 1.8105

Previews

White Background



This preview shows how the XYZ color 43.2663, 41.5556, 38.5415 looks on a white background.

Color Contrast Check

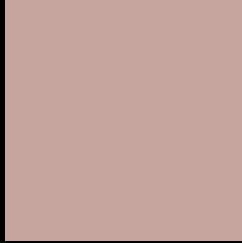
Large Text (above 18pt) WCAG AA × Fail

Any Text WCAG AA × Fail

Large Text (above 18pt) WCAG AAA × Fail

Any Text WCAG AAA × Fail

Black Background



This preview shows how the XYZ color 43.2663, 41.5556, 38.5415 looks on a black background.

Color Contrast Check

Large Text (above 18pt) WCAG AA ✓ Pass

Any Text WCAG AA ✓ Pass

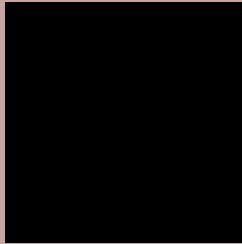
Large Text (above 18pt) WCAG AAA ✓ Pass

Any Text WCAG AAA ✓ Pass

If you want to check with other color combinations, try the [Color Contrast Checker](#).

XYZ 43.2663, 41.5556, 38.5415

Background



This preview shows how black text looks on a background with the XYZ color 43.2663, 41.5556, 38.5415.



This preview shows how white text looks on a background with the XYZ color 43.2663, 41.5556,

Color Blindness Simulation

Color vision deficiency is a very complex topic, and I could not describe the different causes any better than Wikipedia does, so if you want to learn more, you should check out their [article about color blindness](#).

Dichromacy



Original Color

43.2663, 41.5556, 38.5415

Protanopia

39.7235, 41.6144, 40.5891

Deuteranopia

42.5824, 41.7427, 38.6137



Tritanopia

44.9225, 41.7070, 46.2400

Trichromacy



Original Color

43.2663, 41.5556, 38.5415

Protanomaly

40.9593, 41.4237, 40.0192

Deuteranomaly

42.6592, 41.5114, 38.5650

Tritanomaly

44.2563, 41.6949, 43.2515

Monochromacy



Original Color

43.2663, 41.5556, 38.5415

Achromatopsia

40.2316, 42.3268, 46.0938

Achromatomaly

41.2528, 42.0577, 43.4798

CSS Examples

Text

The CSS property to change the color of the text to XYZ 43.2663, 41.5556, 38.5415 is called "color". The color property can be set on classes, ids or directly on the HTML element.

This example shows how text in the color `rgb(199, 165, 159)` looks like.

```
.text, #text, p{  
    color:rgb(199, 165, 159)  
}
```

If you want to add a text shadow in that color use the text-shadow property, you can generate a text shadow directly with our [CSS Text Shadow Generator](#).

Here you see how black text with a 4 pixel rgb(199, 165, 159) colored shadow looks like.

```
.shadow{ text-shadow: 4px 4px 2px rgb(199, 165, 159) }
```

Border

The CSS property to change the border of an element to XYZ 43.2663, 41.5556, 38.5415 is called "border". The border property can be set on classes, ids or directly on the HTML element.

This example shows the color as border, it can be applied via the CSS property "border" or "border-color".

```
.border, #border, table{ border:4px solid rgb(199, 165, 159) }
```


If only the border color should be changed use the property `border-color`.

```
.border{ border-color:rgb(199, 165, 159) }
```

If you want to add a box shadow in that color use:

Here you see how a box with a 4 pixel `rgb(199, 165, 159)` colored shadow looks like.

```
.boxshadow{ -moz-box-shadow:4px 4px 4px 4px rgb(199, 165, 159); -webkit-box-shadow:4px 4px 4px 4px rgb(199, 165, 159); box-shadow:4px 4px 4px 4px rgb(199, 165, 159) }
```

Background

The CSS property to change the background color of an element to XYZ 43.2663, 41.5556, 38.5415 is called "background". The background property can be set on classes, ids or directly on the HTML element.

```
.background, #background, body{  
background: rgb(199, 165, 159) }
```

If only the background color should be changed can be used:

```
.background{ background-color: rgb(199,  
165, 159) }
```

This example shows the color as background, it is applied via the CSS property "background".

To optimize and compress your CSS code, you can use our [online CSS compressor and optimizer](#) based on csstidy. If you want to create a linear or radial gradient as background or border, check our [CSS Gradient Generator](#).

Hey! You found this booklet interesting? Support Converting Colors with the new Membership Option!

The pro membership hides all ads, plus gives you double the colors in the color bucket, and more awesome pro features!

[Learn more, Memberships starting at \\$2.50/m!](#)

**Follow me
on Twitter!**

@ConvertingColor