

Converting Colors

XYZ(43.3851, 42.1875, 37.3046)

Have a look what the booklet for
XYZ(43.3851, 42.1875, 37.3046)
contains.

XYZ(43.3727, 42.1798, 37.3080)	3
<i>Conversions</i>	4
<i>Details</i>	6
<i>Harmonies</i>	12
<i>Previews</i>	24
<i>Color Blindness Simulation</i>	28
<i>CSS Examples</i>	31

Color

**XYZ(43.3727, 42.1798,
37.3080)**

Conversions

Conversions Part 1

Format	Color
Hex	C7A79C
RGB	199, 167, 156
RGB Percent	78%, 65%, 61%
CMY	0.2196, 0.3451, 0.3882
CMYK	0.00, 0.16, 0.22, 0.22
HSL	15°, 28%, 70%
HSV	15°, 22%, 78%
XYZ	43.3727, 42.1798, 37.3080
YIQ	175.3140, 22.6030, 3.3630

Conversions

Conversions Part 2

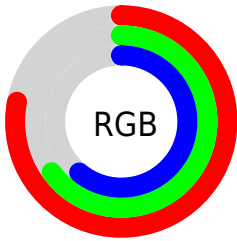
Format	Color
R _Y B	199, 171, 156
Decimal	13084572
CIE Lab	70.99, 9.97, 10.04
CIE LCh	71, 14.146, 45.212
Yxy	42.1798, 0.3530, 0.3433
Android (android.graphics.Color)	4291274652 (0xFFC7A79C)
YUV	175.3140, -9.5218, 20.7726
Hunter-Lab	64.9460, 5.5517, 11.4032

Details

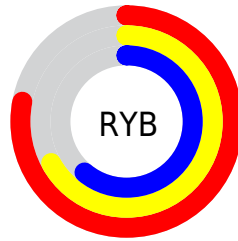
The XYZ color **43.3727, 42.1798, 37.3080** is a light color, and the websafe version is hex **CC9999**. A complement of this color would be **42.0021, 47.1569, 60.9218**, and the grayscale version is **40.9507, 43.0833, 46.9178**.

A 20% lighter version of the original color is **78.9941, 78.1557, 71.8949**, and **20.3576, 19.3011, 16.0171** is the 20% darker color. If you saturate the color by 10%, you get **39.2648, 36.4431, 28.2950**, and if you desaturate by 10%, it is **48.0697, 48.6520, 47.8804**.

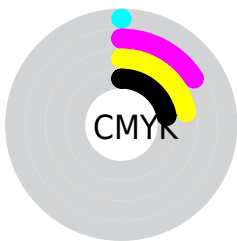
Distribution



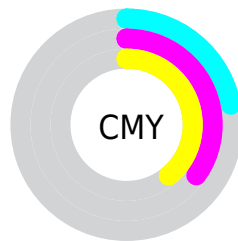
- Red (78%)
- Green (65%)
- Blue (61%)



- Red (78%)
- Yellow (67%)
- Blue (61%)



- Cyan (0%)
- Magenta (16%)
- Yellow (22%)
- Black (22%)





- Cyan (22%)
- Magenta (35%)
- Yellow (39%)

Brightness & Saturation Gradients


These gradients show how the XYZ color 43.3727, 42.1798, 37.3080 changes by changing the brightness by 10 percent. The first figure shows a shift by +10% for each color and the second figure -10%.


Similar to the brightness gradients but the following saturation gradients show a change of the XYZ color 43.3727, 42.1798, 37.3080 by changing the saturation by 10% instead.

 43.3727, 42.1798,
37.3080


 43.3727, 42.1798,
37.3080


351.0378,
355.2277, 349.8508

 30.3734, 29.2421,
25.1484


 79.5252, 78.4717,
72.2378

 20.2717, 19.2640,
15.9676


 103.4091,
102.5946, 95.8452

 12.7021, 11.8612,
9.3471

131.6520,
131.2148, 124.1055

 7.2993, 6.6493,
4.8684

164.6192,
164.7166, 157.4373

 3.6980, 3.2437,
2.1129

202.6760,
203.4844, 196.2593

 1.5327, 1.2603,
0.6234

246.1878,

 0.3479, 0.1101,

247.9026, 240.9898

0.0000

295.5200,
298.3556, 292.0475

■ 0.0000, 0.0000,
0.0000

■ 43.3727, 42.1798,
37.3080

■ 43.3727, 42.1798,
37.3080

■ 39.2648, 36.4431,
28.2950

■ 48.0697, 48.6520,
47.8804

■ 35.7186, 31.4101,
20.7646

■ 53.3747, 55.8789,
60.0787

■ 32.7098, 27.0546,
14.6372

■ 59.3102, 63.8861,
73.9689

■ 30.2106, 23.3471,
9.8249

■ 65.8963, 72.6961,
89.6124

■ 28.1909, 20.2554,
6.2298

■ 73.0715, 82.2985,
106.6417

■ 26.6168, 17.7446,
3.7398

■ 77.3634, 90.8822,
108.0723

■ 25.4492, 15.7757,
2.2218

■ 24.7339, 14.5032,
1.4958

Harmonies

Analogous

The Analogous color harmony consists of three colors that are next to each other on the color wheel.



44.6301, 42.1798, 42.6008



43.3727, 42.1798, 37.3080



41.2599, 42.1798, 34.4738

Triad

The Triadic color harmony groups three colors that are evenly spaced from another and form a triangle on the color wheel.



43.3727, 42.1798, 37.3080



35.8618, 42.1798, 42.6892



41.2930, 42.1798, 59.6411

Complementary

The Complementary color scheme is a pair of colors which are on the opposite of each other on the color wheel.



43.3727, 42.1798, 37.3080



42.0021, 47.1569, 60.9218

Split Complementary

Split-complementary colors differ from the complementary color scheme. The scheme consists of three colors, the original color and two neighbors of the complement color.



38.9437, 42.1798, 59.6708



43.3727, 42.1798, 37.3080



35.8699, 42.1798, 49.4212

Square

The Square scheme is like the rectangle color scheme, but the four colors are evenly spaced on the color wheel.



43.3727, 42.1798, 37.3080



36.9560, 42.1798, 37.3672



36.9785, 42.1798, 55.7798



43.3977, 42.1798, 55.7025

Rectangle

The Rectangle color scheme consists of four colors that form a rectangle on the color wheel.



43.3727, 42.1798, 37.3080



39.6799, 42.1798, 34.1636



36.9785, 42.1798, 55.7798



40.5042, 42.1798, 60.1204

Sweetspot

The Sweet Spot groups the original color and five complimentary colors.



43.3738, 42.1817, 37.3089



89.1587, 92.0035, 95.2639



44.5463, 39.5613, 53.0071



18.9516, 19.5127, 20.0867



0.0000, 0.0000, 0.0000



20.3446, 21.4041, 23.3091

Same Dimension

The Same Dimension uses a secret algorithm to generate beautiful new colors.



43.3738, 42.1817, 37.3089



72.3837, 68.9030, 57.4581



47.5911, 50.6163, 38.7146



10.8508, 11.0708, 11.1277



15.9648, 9.4468, 0.9820



0.8163, 0.5680, 0.0666

Inverse Universe

The Inverse Universe completely reimagines the original color for something new.



42.0021, 47.1569, 60.9218



69.5464, 79.1694, 106.2235



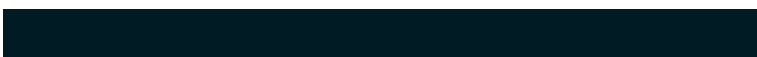
37.7926, 38.7379, 59.5186



10.7081, 11.5903, 13.5903



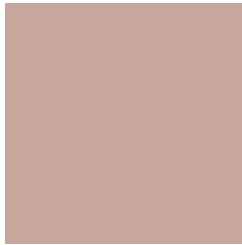
13.5195, 16.4329, 37.2037



0.6959, 0.8896, 1.7802

Previews

White Background



This preview shows how the XYZ color 43.3727, 42.1798, 37.3080 looks on a white background.

Color Contrast Check

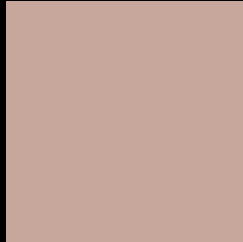
Large Text (above 18pt) WCAG AA × Fail

Any Text WCAG AA × Fail

Large Text (above 18pt) WCAG AAA × Fail

Any Text WCAG AAA × Fail

Black Background



This preview shows how the XYZ color 43.3727, 42.1798, 37.3080 looks on a black background.

Color Contrast Check

Large Text (above 18pt) WCAG AA ✓ Pass

Any Text WCAG AA ✓ Pass

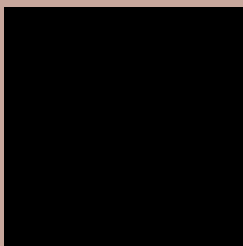
Large Text (above 18pt) WCAG AAA ✓ Pass

Any Text WCAG AAA ✓ Pass

If you want to check with other color combinations, try the [Color Contrast Checker](#).

XYZ 43.3727, 42.1798, 37.3080

Background



This preview shows how black text looks on a background with the XYZ color 43.3727, 42.1798, 37.3080.



This preview shows how white text looks on a background with the XYZ color 43.3727, 42.1798,

37.3080.

Color Blindness Simulation

Color vision deficiency is a very complex topic, and I could not describe the different causes any better than Wikipedia does, so if you want to learn more, you should check out their [article about color blindness](#).

Dichromacy



Original Color

43.3727, 42.1798, 37.3080

Protanopia

40.0240, 42.0936, 38.8163

Deuteranopia

43.0293, 42.2759, 37.3447



Tritanopia

45.2987, 42.1428, 47.3418

Trichromacy



Original Color

43.3727, 42.1798, 37.3080

Protanomaly

41.2280, 42.1592, 38.3124

Deuteranomaly

43.2921, 42.4113, 37.3570

Tritanomaly

44.4360, 42.0542, 43.3114

Monochromacy



Original Color

43.3727, 42.1798, 37.3080

Achromatopsia

40.7470, 42.8690, 46.6844

Achromatomaly

41.5876, 42.5225, 43.0616

CSS Examples

Text

The CSS property to change the color of the text to XYZ 43.3727, 42.1798, 37.3080 is called "color". The color property can be set on classes, ids or directly on the HTML element.

This example shows how text in the color `rgb(199, 167, 156)` looks like.

```
.text, #text, p{  
    color:rgb(199, 167, 156)  
}
```

If you want to add a text shadow in that color use the text-shadow property, you can generate a text shadow directly with our [CSS Text Shadow Generator](#).

Here you see how black text with a 4 pixel rgb(199, 167, 156) colored shadow looks like.

```
.shadow{ text-shadow: 4px 4px 2px rgb(199, 167, 156) }
```

Border

The CSS property to change the border of an element to XYZ 43.3727, 42.1798, 37.3080 is called "border". The border property can be set on classes, ids or directly on the HTML element.

This example shows the color as border, it can be applied via the CSS property "border" or "border-color".

```
.border, #border, table{ border:4px solid rgb(199, 167, 156) }
```


If only the border color should be changed use the property `border-color`.

```
.border{ border-color:rgb(199, 167, 156) }
```

If you want to add a box shadow in that color use:

Here you see how a box with a 4 pixel `rgb(199, 167, 156)` colored shadow looks like.

```
.boxshadow{ -moz-box-shadow:4px 4px 4px  
4px rgb(199, 167, 156); -webkit-box-  
shadow:4px 4px 4px 4px rgb(199, 167, 156);  
box-shadow:4px 4px 4px 4px rgb(199, 167,  
156) }
```

Background

The CSS property to change the background color of an element to XYZ 43.3727, 42.1798, 37.3080 is called "background". The background property can be set on classes, ids or directly on the HTML element.

```
.background, #background, body{  
background: rgb(199, 167, 156) }
```

If only the background color should be changed can be used:

```
.background{ background-color: rgb(199,  
167, 156) }
```

This example shows the color as background, it is applied via the CSS property "background".

To optimize and compress your CSS code, you can use our [online CSS compressor and optimizer](#) based on csstidy. If you want to create a linear or radial gradient as background or border, check our [CSS Gradient Generator](#).

Hey! You found this booklet interesting? Support Converting Colors with the new Membership Option!

The pro membership hides all ads, plus gives you double the colors in the color bucket, and more awesome pro features!

[Learn more, Memberships starting at \\$2.50/m!](#)

**Follow me
on Twitter!**

@ConvertingColor