

# Converting Colors

XYZ(43.3944, 43.0381, 45.3719)

Have a look what the booklet for  
XYZ(43.3944, 43.0381, 45.3719)  
contains.

<b>XYZ(43.5916, 43.2193, 45.5798)</b> .....	3
<b><i>Conversions</i></b> .....	4
<b><i>Details</i></b> .....	6
<b><i>Harmonies</i></b> .....	12
<b><i>Previews</i></b> .....	24
<b><i>Color Blindness Simulation</i></b> .....	28
<b><i>CSS Examples</i></b> .....	31

# Color

**XYZ(43.5916, 43.2193,  
45.5798)**

# Conversions

## Conversions Part 1

Format	Color
Hex	BFABAD
RGB	191, 171, 173
RGB Percent	75%, 67%, 68%
CMY	0.2510, 0.3294, 0.3216
CMYK	0.00, 0.10, 0.09, 0.25
HSL	354°, 14%, 71%
HSV	354°, 10%, 75%
XYZ	43.5916, 43.2193, 45.5798
YIQ	177.2080, 11.2780, 4.8620

# Conversions

## Conversions Part 2

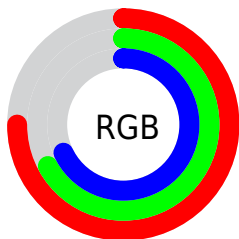
<b>Format</b>	<b>Color</b>
R <sub>Y</sub> B	191, 171, 173
Decimal	12561325
CIE Lab	71.70, 7.56, 1.60
CIE LCh	72, 7.724, 11.960
Yxy	43.2193, 0.3293, 0.3265
Android (android.graphics.Color)	4290751405 (0xFFBFABAD)
YUV	177.2080, -2.0745, 12.0956
Hunter-Lab	65.7414, 3.3118, 4.9120

# Details

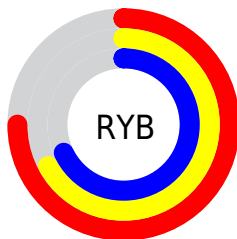
The XYZ color **43.5916, 43.2193, 45.5798** is a light color, and the websafe version is hex **999999**. A complement of this color would be **44.6124, 49.5948, 55.3680**, and the grayscale version is **41.9066, 44.0891, 48.0130**.

A 20% lighter version of the original color is **79.5577, 79.7683, 84.6025**, and **20.3645, 19.8925, 20.8555** is the 20% darker color. If you saturate the color by 10%, you get **38.6834, 35.8958, 36.2572**, and if you desaturate by 10%, it is **49.2377, 51.6750, 56.2057**.

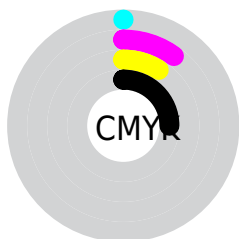
# Distribution



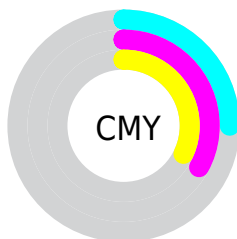
- Red (75%)
- Green (67%)
- Blue (68%)



- Red (75%)
- Yellow (67%)
- Blue (68%)



- Cyan (0%)
- Magenta (10%)
- Yellow (9%)
- Black (25%)



- Cyan (25%)
- Magenta (33%)
- Yellow (32%)

# Brightness & Saturation Gradients

These gradients show how the XYZ color 43.5916, 43.2193, 45.5798 changes by changing the brightness by 10 percent. The first figure shows a shift by +10% for each color and the second figure -10%.

Similar to the brightness gradients but the following saturation gradients show a change of the XYZ color 43.5916, 43.2193, 45.5798 by changing the saturation by 10% instead.



■ 43.5916, 43.2193,  
45.5798

■ 43.5916, 43.2193,  
45.5798

351.9195,  
359.5129, 385.3451

■ 30.5461, 30.0572,  
31.5681

■ 79.8530, 80.0417,  
84.9174

■ 20.4036, 19.8820,  
20.7697

103.7996,  
104.4708, 111.0804

■ 12.7987, 12.3093,  
12.7662

132.1107,  
133.4243, 142.1309

■ 7.3661, 6.9547,  
7.1389

165.1515,  
167.2868, 178.4875

■ 3.7405, 3.4338,  
3.4694

203.2874,  
206.4424, 220.5687

■ 1.5564, 1.3622,  
1.3390

246.8838,

■ 0.3637, 0.1886,

251.2757, 268.7930

0.0934

296.3061,  
302.1711, 323.5789

■ 0.0000, 0.0000,  
0.0000

■ 43.5916, 43.2193,  
45.5798

■ 43.5916, 43.2193,  
45.5798

■ 38.6834, 35.8958,  
36.2572

■ 49.2377, 51.6750,  
56.2057

■ 34.4790, 29.6509,  
28.1850

■ 55.6467, 61.3019,  
68.1794

■ 30.9473, 24.4354,  
21.3107

■ 62.8468, 72.1445,  
81.5470

■ 28.0531, 20.1939,  
15.5772

■ 70.8637, 84.2431,  
96.3513

■ 25.7583, 16.8660,  
10.9225

■ 75.2961, 89.8165,  
107.9755

■ 24.0205, 14.3844,  
7.2790

■ 22.7918, 12.6725,  
4.5710

■ 22.0159, 11.6398,  
2.7123

■ 21.6043, 11.1238,  
1.6277

# Harmonies

## Analogous

The Analogous color harmony consists of three colors that are next to each other on the color wheel.



43.5197, 43.2193, 49.3272



43.5916, 43.2193, 45.5798



42.9797, 43.2193, 42.3996

# Triad

The Triadic color harmony groups three colors that are evenly spaced from another and form a triangle on the color wheel.



43.5916, 43.2193, 45.5798



39.4179, 43.2193, 41.8970



40.3038, 43.2193, 54.2539

# Complementary

The Complementary color scheme is a pair of colors which are on the opposite of each other on the color wheel.



43.5916, 43.2193, 45.5798



44.6124, 49.5948, 55.3680

# Split Complementary

Split-complementary colors differ from the complementary color scheme. The scheme consists of three colors, the original color and two neighbors of the complement color.



39.2345, 43.2193, 52.0467



43.5916, 43.2193, 45.5798



38.7306, 43.2193, 44.8604

# Square

The Square scheme is like the rectangle color scheme, but the four colors are evenly spaced on the color wheel.



43.5916, 43.2193, 45.5798



40.5590, 43.2193, 40.3502



38.6642, 43.2193, 48.5688



41.6027, 43.2193, 54.4718



# Rectangle

The Rectangle color scheme consists of four colors that form a rectangle on the color wheel.



43.5916, 43.2193, 45.5798



42.2738, 43.2193, 40.9761



38.6642, 43.2193, 48.5688



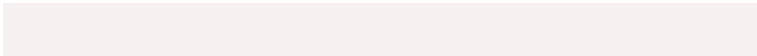
39.9063, 43.2193, 53.7148

# Sweetspot

The Sweet Spot groups the original color and five complimentary colors.



43.5928, 43.2212, 45.5807



85.4487, 88.4477, 95.5297



44.9544, 43.7082, 55.3579



18.5785, 19.1447, 20.6293



92.9021, 97.7402, 106.4391



19.4759, 20.4902, 22.3138



# Same Dimension

The Same Dimension uses a secret algorithm to generate beautiful new colors.



43.5928, 43.2212, 45.5807



75.5393, 73.6210, 76.8370



44.9579, 46.2584, 45.0896



9.5678, 9.5514, 10.1133



14.2122, 7.3160, 1.1450



0.5698, 0.2918, 0.1140



# Inverse Universe

The Inverse Universe completely reimagines the original color for something new.



43.5928, 43.2212, 45.5807



75.5393, 73.6210, 76.8370



43.1336, 46.2880, 55.9519



9.5678, 9.5514, 10.1133



14.2122, 7.3160, 1.1450

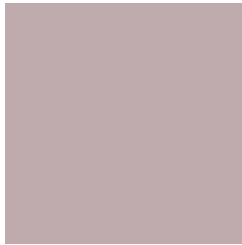


0.5698, 0.2918, 0.1140



# Previews

## White Background



This preview shows how the XYZ color 43.5916, 43.2193, 45.5798 looks on a white background.

## Color Contrast Check

Large Text (above 18pt) WCAG AA × Fail

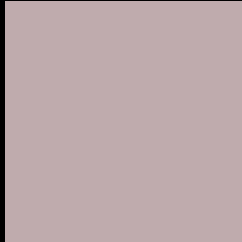
Any Text WCAG AA × Fail

Large Text (above 18pt) WCAG AAA × Fail

Any Text WCAG AAA × Fail



# Black Background



This preview shows how the XYZ color 43.5916, 43.2193, 45.5798 looks on a black background.

## Color Contrast Check

Large Text (above 18pt) WCAG AA ✓ Pass

Any Text WCAG AA ✓ Pass

Large Text (above 18pt) WCAG AAA ✓ Pass

Any Text WCAG AAA ✓ Pass

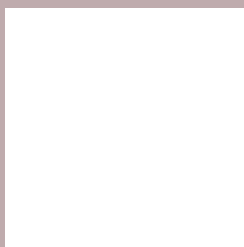
If you want to check with other color combinations, try the [Color Contrast Checker](#).

**XYZ 43.5916, 43.2193, 45.5798**

## **Background**



This preview shows how black text looks on a background with the XYZ color 43.5916, 43.2193, 45.5798.



This preview shows how white text looks on a background with the XYZ color 43.5916, 43.2193,



# Color Blindness Simulation

Color vision deficiency is a very complex topic, and I could not describe the different causes any better than Wikipedia does, so if you want to learn more, you should check out their [article about color blindness](#).

## Dichromacy



### Original Color

43.5916, 43.2193, 45.5798

### Protanopia

41.6582, 43.3388, 46.7270

### Deuteranopia

44.1657, 43.2359, 45.5527



## Tritanopia

44.4734, 43.0013, 50.7558

# Trichromacy



## Original Color

43.5916, 43.2193, 45.5798

## Protanomaly

42.3045, 43.3954, 46.1909

## Deuteranomaly

43.9099, 43.1040, 45.5408

## Tritanomaly

44.2496, 43.2106, 48.6561

# Monochromacy



## Original Color

43.5916, 43.2193, 45.5798

## Achromatopsia

41.7894, 43.9657, 47.8787

## Achromatomaly

42.4578, 43.7396, 47.2791

# CSS Examples

## Text

The CSS property to change the color of the text to XYZ 43.5916, 43.2193, 45.5798 is called "color". The color property can be set on classes, ids or directly on the HTML element.

This example shows how text in the color `rgb(191, 171, 173)` looks like.

```
.text, #text, p{  
    color:rgb(191, 171, 173)  
}
```

If you want to add a text shadow in that color use the text-shadow property, you can generate a text shadow directly with our [CSS Text Shadow Generator](#).

Here you see how black text with a 4 pixel rgb(191, 171, 173) colored shadow looks like.

```
.shadow{ text-shadow: 4px 4px 2px rgb(191, 171, 173) }
```

## Border

The CSS property to change the border of an element to XYZ 43.5916, 43.2193, 45.5798 is called "border". The border property can be set on classes, ids or directly on the HTML element.

This example shows the color as border, it can be applied via the CSS property "border" or "border-color".

```
.border, #border, table{ border:4px solid rgb(191, 171, 173) }
```



If only the border color should be changed use the property `border-color`.

```
.border{ border-color:rgb(191, 171, 173) }
```

If you want to add a box shadow in that color use:

Here you see how a box with a 4 pixel `rgb(191, 171, 173)` colored shadow looks like.

```
.boxshadow{ -moz-box-shadow:4px 4px 4px  
4px rgb(191, 171, 173); -webkit-box-  
shadow:4px 4px 4px 4px rgb(191, 171, 173);  
box-shadow:4px 4px 4px 4px rgb(191, 171,  
173) }
```

# Background

The CSS property to change the background color of an element to XYZ 43.5916, 43.2193, 45.5798 is called "background". The background property can be set on classes, ids or directly on the HTML element.

```
.background, #background, body{  
background: rgb(191, 171, 173) }
```

If only the background color should be changed can be used:

```
.background{ background-color: rgb(191,  
171, 173) }
```

This example shows the color as background, it is applied via the CSS property "background".

To optimize and compress your CSS code, you can use our [online CSS compressor and optimizer](#) based on csstidy. If you want to create a linear or radial gradient as background or border, check our [CSS Gradient Generator](#).

Hey! You found this booklet interesting? Support Converting Colors with the new Membership Option!

The pro membership hides all ads, plus gives you double the colors in the color bucket, and more awesome pro features!

**[Learn more, Memberships starting at \\$2.50/m!](#)**

**Follow me  
on Twitter!**

@ConvertingColor