

Converting Colors

XYZ(43.4446, 40.5975, 32.9321)

Have a look what the booklet for
XYZ(43.4446, 40.5975, 32.9321)
contains.

XYZ(43.3868, 40.6869, 32.7608)	3
<i>Conversions</i>	4
<i>Details</i>	6
<i>Harmonies</i>	12
<i>Previews</i>	24
<i>Color Blindness Simulation</i>	28
<i>CSS Examples</i>	31

Color

**XYZ(43.3868, 40.6869,
32.7608)**

Conversions

Conversions Part 1

Format	Color
Hex	CEA192
RGB	206, 161, 146
RGB Percent	81%, 63%, 57%
CMY	0.1922, 0.3686, 0.4274
CMYK	0.00, 0.22, 0.29, 0.19
HSL	15°, 38%, 69%
HSV	15°, 29%, 81%
XYZ	43.3868, 40.6869, 32.7608
YIQ	172.7450, 31.6350, 4.8750

Conversions

Conversions Part 2

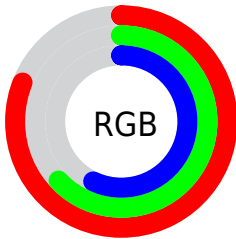
Format	Color
R _Y B	206, 166, 146
Decimal	13541778
CIE Lab	69.96, 14.48, 14.18
CIE LCh	70, 20.272, 44.397
Yxy	40.6869, 0.3714, 0.3482
Android (android.graphics.Color)	4291731858 (0xFFCEA192)
YUV	172.7450, -13.1853, 29.1646
Hunter-Lab	63.7863, 9.7879, 14.1989

Details

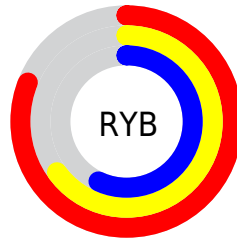
The XYZ color **43.3868, 40.6869, 32.7608** is a light color, and the websafe version is hex **CC9999**. A complement of this color would be **41.6249, 47.8274, 65.4304**, and the grayscale version is **39.6453, 41.7099, 45.4221**.

A 20% lighter version of the original color is **76.2212, 74.5419, 65.0143**, and **20.2967, 18.3428, 13.2972** is the 20% darker color. If you saturate the color by 10%, you get **39.3917, 35.0341, 24.2228**, and if you desaturate by 10%, it is **48.0064, 47.1261, 42.9324**.

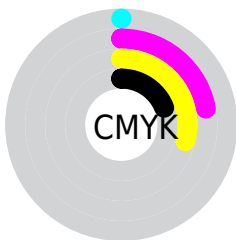
Distribution



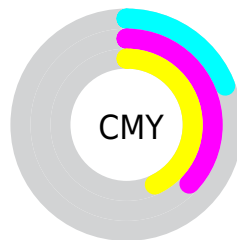
- Red (81%)
- Green (63%)
- Blue (57%)



- Red (81%)
- Yellow (65%)
- Blue (57%)



- Cyan (0%)
- Magenta (22%)
- Yellow (29%)
- Black (19%)





- Cyan (19%)
- Magenta (37%)
- Yellow (43%)

Brightness & Saturation Gradients


These gradients show how the XYZ color 43.3868, 40.6869, 32.7608 changes by changing the brightness by 10 percent. The first figure shows a shift by +10% for each color and the second figure -10%.


Similar to the brightness gradients but the following saturation gradients show a change of the XYZ color 43.3868, 40.6869, 32.7608 by changing the saturation by 10% instead.


 43.3868, 40.6869,
32.7608


 43.3868, 40.6869,
32.7608


351.0947,
349.0103, 329.1694

 30.3846, 28.0745,
21.6737


 79.5463, 76.2084,
65.1136

 20.2802, 18.3818,
13.4213

 103.4343, 99.8862,
87.2163

 12.7083, 11.2245,
7.5852


131.6816,
128.0214, 113.8280

 7.3036, 6.2180,
3.7467

164.6535,
160.9982, 145.3672

 3.7007, 2.9781,
1.4875

202.7154,
199.2012, 182.2523

 1.5342, 1.1203,
0.2086

246.2327,

 0.3490, 0.0000,

243.0146, 224.9021

0.0000

295.5706,
292.8228, 273.7349

0.0000, 0.0000,
0.0000

43.3868, 40.6869,
32.7608

43.3868, 40.6869,
32.7608

39.3917, 35.0341,
24.2228

48.0064, 47.1261,
42.9324

35.9903, 30.1317,
17.2302

53.2731, 54.3748,
54.8144

33.1538, 25.9491,
11.6902

59.2124, 62.4621,
68.4821

30.8496, 22.4512,
7.4988

65.8472, 71.4140,
84.0051

29.0416, 19.6001,
4.5382

73.1996, 81.2552,
101.4496

■ 27.6885, 17.3536,
2.6697

■ 78.8493, 91.0332,
108.0231

■ 26.7305, 15.6597,
1.6655

■ 79.2637, 91.8618,
108.1612

■ 26.6601, 15.5347,
1.5934

Harmonies

Analogous

The Analogous color harmony consists of three colors that are next to each other on the color wheel.



45.1516, 40.6869, 39.9331



43.3868, 40.6869, 32.7608



40.4043, 40.6869, 28.9972

Triad

The Triadic color harmony groups three colors that are evenly spaced from another and form a triangle on the color wheel.



43.3868, 40.6869, 32.7608



32.8744, 40.6869, 39.5890



40.2715, 40.6869, 64.3455

Complementary

The Complementary color scheme is a pair of colors which are on the opposite of each other on the color wheel.



43.3868, 40.6869, 32.7608



41.6249, 47.8274, 65.4304

Split Complementary

Split-complementary colors differ from the complementary color scheme. The scheme consists of three colors, the original color and two neighbors of the complement color.



36.9893, 40.6869, 64.2185



43.3868, 40.6869, 32.7608



32.8434, 40.6869, 48.9766

Square

The Square scheme is like the rectangle color scheme, but the four colors are evenly spaced on the color wheel.



43.3868, 40.6869, 32.7608



34.3985, 40.6869, 32.5399



34.3112, 40.6869, 58.2757



43.2848, 40.6869, 58.6013

Rectangle

The Rectangle color scheme consists of four colors that form a rectangle on the color wheel.



43.3868, 40.6869, 32.7608



38.1871, 40.6869, 28.5350



34.3112, 40.6869, 58.2757



39.1603, 40.6869, 65.0113

Sweetspot

The Sweet Spot groups the original color and five complimentary colors.



43.3879, 40.6888, 32.7616



86.3258, 88.1154, 88.8393



45.1368, 37.4417, 54.1385



18.1937, 18.4719, 18.3699



0.0000, 0.0000, 0.0000



20.3446, 21.4041, 23.3091

Same Dimension

The Same Dimension uses a secret algorithm to generate beautiful new colors.



43.3879, 40.6888, 32.7616



66.0979, 59.9998, 44.0537



49.2730, 52.4591, 34.7233



11.4365, 11.6619, 11.7276



16.4821, 9.6971, 1.0030



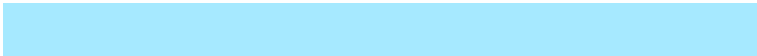
0.9124, 0.6245, 0.0724

Inverse Universe

The Inverse Universe completely reimagines the original color for something new.



41.6249, 47.8274, 65.4304



62.7723, 73.3975, 105.4664



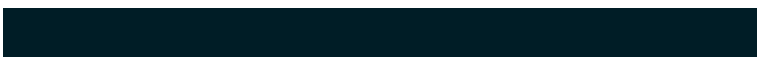
35.7400, 36.0575, 63.4688



11.2965, 12.2334, 14.3363



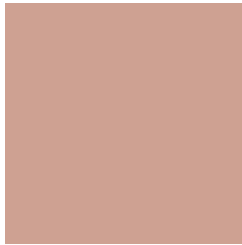
14.1054, 17.2349, 38.5395



0.7856, 1.0049, 2.0075

Previews

White Background



This preview shows how the XYZ color 43.3868, 40.6869, 32.7608 looks on a white background.

Color Contrast Check

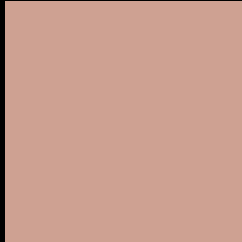
Large Text (above 18pt) WCAG AA × Fail

Any Text WCAG AA × Fail

Large Text (above 18pt) WCAG AAA × Fail

Any Text WCAG AAA × Fail

Black Background



This preview shows how the XYZ color 43.3868, 40.6869, 32.7608 looks on a black background.

Color Contrast Check

Large Text (above 18pt) WCAG AA ✓ Pass

Any Text WCAG AA ✓ Pass

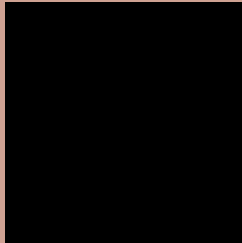
Large Text (above 18pt) WCAG AAA ✓ Pass

Any Text WCAG AAA ✓ Pass

If you want to check with other color combinations, try the [Color Contrast Checker](#).

XYZ 43.3868, 40.6869, 32.7608

Background



This preview shows how black text looks on a background with the XYZ color 43.3868, 40.6869, 32.7608.



This preview shows how white text looks on a background with the XYZ color 43.3868, 40.6869,

32.7608.

Color Blindness Simulation

Color vision deficiency is a very complex topic, and I could not describe the different causes any better than Wikipedia does, so if you want to learn more, you should check out their [article about color blindness](#).

Dichromacy



Original Color

43.3868, 40.6869, 32.7608

Protanopia

38.7392, 40.9439, 35.1393

Deuteranopia

41.5919, 40.8249, 32.4759



Tritanopia

45.7771, 40.9113, 43.5142

Trichromacy



Original Color

43.3868, 40.6869, 32.7608

Protanomaly

40.2298, 40.6262, 34.1551

Deuteranomaly

42.2057, 40.8746, 32.4532

Tritanomaly

44.8436, 40.7794, 39.2259

Monochromacy



Original Color

43.3868, 40.6869, 32.7608

Achromatopsia

39.7200, 41.7885, 45.5077

Achromatomaly

40.8064, 41.3346, 40.4780

CSS Examples

Text

The CSS property to change the color of the text to XYZ 43.3868, 40.6869, 32.7608 is called "color". The color property can be set on classes, ids or directly on the HTML element.

This example shows how text in the color `rgb(206, 161, 146)` looks like.

```
.text, #text, p{  
    color:rgb(206, 161, 146)  
}
```

If you want to add a text shadow in that color use the text-shadow property, you can generate a text shadow directly with our [CSS Text Shadow Generator](#).

Here you see how black text with a 4 pixel rgb(206, 161, 146) colored shadow looks like.

```
.shadow{ text-shadow: 4px 4px 2px rgb(206, 161, 146) }
```

Border

The CSS property to change the border of an element to XYZ 43.3868, 40.6869, 32.7608 is called "border". The border property can be set on classes, ids or directly on the HTML element.

This example shows the color as border, it can be applied via the CSS property "border" or "border-color".

```
.border, #border, table{ border:4px solid rgb(206, 161, 146) }
```


If only the border color should be changed use the property `border-color`.

```
.border{ border-color:rgb(206, 161, 146) }
```

If you want to add a box shadow in that color use:

Here you see how a box with a 4 pixel `rgb(206, 161, 146)` colored shadow looks like.

```
.boxshadow{ -moz-box-shadow:4px 4px 4px  
4px rgb(206, 161, 146); -webkit-box-  
shadow:4px 4px 4px 4px rgb(206, 161, 146);  
box-shadow:4px 4px 4px 4px rgb(206, 161,  
146) }
```

Background

The CSS property to change the background color of an element to XYZ 43.3868, 40.6869, 32.7608 is called "background". The background property can be set on classes, ids or directly on the HTML element.

```
.background, #background, body{  
background: rgb(206, 161, 146) }
```

If only the background color should be changed can be used:

```
.background{ background-color: rgb(206,  
161, 146) }
```

This example shows the color as background, it is applied via the CSS property "background".

To optimize and compress your CSS code, you can use our [online CSS compressor and optimizer](#) based on csstidy. If you want to create a linear or radial gradient as background or border, check our [CSS Gradient Generator](#).

Hey! You found this booklet interesting? Support Converting Colors with the new Membership Option!

The pro membership hides all ads, plus gives you double the colors in the color bucket, and more awesome pro features!

[Learn more, Memberships starting at \\$2.50/m!](#)

**Follow me
on Twitter!**

@ConvertingColor