

Converting Colors

XYZ(43.4472, 41.6601, 38.0996)

Have a look what the booklet for
XYZ(43.4472, 41.6601, 38.0996)
contains.

XYZ(43.4461, 41.6582, 38.0987)	3
<i>Conversions</i>	4
<i>Details</i>	6
<i>Harmonies</i>	12
<i>Previews</i>	24
<i>Color Blindness Simulation</i>	28
<i>CSS Examples</i>	31

Color

**XYZ(43.4461, 41.6582,
38.0987)**

Conversions

Conversions Part 1

Format	Color
Hex	C8A59E
RGB	200, 165, 158
RGB Percent	78%, 65%, 62%
CMY	0.2157, 0.3529, 0.3804
CMYK	0.00, 0.17, 0.21, 0.22
HSL	10°, 28%, 70%
HSV	10°, 21%, 78%
XYZ	43.4461, 41.6582, 38.0987
YIQ	174.6670, 23.1070, 5.2430

Conversions

Conversions Part 2

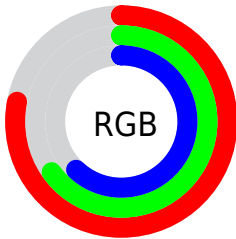
Format	Color
R _Y B	200, 166, 158
Decimal	13149598
CIE Lab	70.63, 11.73, 8.44
CIE LCh	71, 14.453, 35.715
Yxy	41.6582, 0.3526, 0.3381
Android (android.graphics.Color)	4291339678 (0xFFC8A59E)
YUV	174.6670, -8.2168, 22.2170
Hunter-Lab	64.5432, 7.2036, 10.1824

Details

The XYZ color **43.4461, 41.6582, 38.0987** is a light color, and the websafe version is hex **CC9999**. A complement of this color would be **43.5955, 49.5780, 61.9157**, and the grayscale version is **40.6091, 42.7239, 46.5264**.

A 20% lighter version of the original color is **78.8434, 77.2505, 73.7061**, and **20.2360, 18.8915, 16.4898** is the 20% darker color. If you saturate the color by 10%, you get **39.0504, 35.4010, 28.8201**, and if you desaturate by 10%, it is **48.5160, 48.8146, 48.9852**.

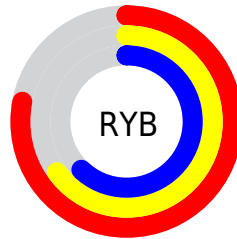
Distribution



Red (78%)

Green (65%)

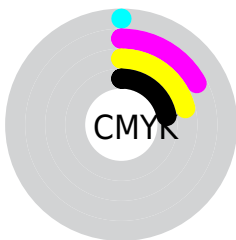
Blue (62%)



Red (78%)

Yellow (65%)

Blue (62%)

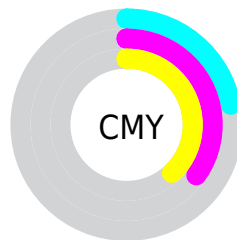


Cyan (0%)

Magenta (17%)

Yellow (21%)

Black (22%)



Cyan (22%)


Magenta (35%)


Yellow (38%)

Brightness & Saturation Gradients

These gradients show how the XYZ color 43.4461, 41.6582, 38.0987 changes by changing the brightness by 10 percent. The first figure shows a shift by +10% for each color and the second figure -10%.


Similar to the brightness gradients but the following saturation gradients show a change of the XYZ color 43.4461, 41.6582, 38.0987 by changing the saturation by 10% instead.


 43.4461, 41.6582,
38.0987

 43.4461, 41.6582,
38.0987


351.3336,
353.0641, 353.3541

 30.4313, 28.8337,
25.7569


 79.6351, 77.6821,
73.4645

 20.3159, 18.9551,
16.4177

 103.5401,
101.6503, 97.3255

 12.7345, 11.6378,
9.6627


131.8058,
130.1018, 125.8634

 7.3217, 6.4976,
5.0732

164.7977,
163.4212, 159.4967

 3.7122, 3.1499,
2.2308

202.8811,
201.9927, 198.6438

 1.5406, 1.2105,
0.6921

246.4213,

 0.3532, 0.0703,

246.2007, 243.7234

0.0000

295.7837,
296.4297, 295.1540

■ 0.0000, 0.0000,
0.0000

■ 43.4461, 41.6582,
38.0987

■ 43.4461, 41.6582,
38.0987

■ 39.0504, 35.4010,
28.8201

■ 48.5160, 48.8146,
48.9852

■ 35.2969, 30.0020,
21.0705

■ 54.2834, 56.8981,
61.5482

■ 32.1561, 25.4250,
14.7682

■ 60.7750, 65.9422,
75.8555

■ 29.5948, 21.6296,
9.8230

■ 68.0147, 75.9771,
91.9703

■ 27.5765, 18.5714,
6.1343

■ 75.5384, 86.8371,
107.3877

■ 26.0606, 16.2017,
3.5875

■ 77.6296, 91.0194,
108.0847

■ 25.0001, 14.4658,
2.0468

■ 24.3732, 13.3867,
1.2993

Harmonies

Analogous

The Analogous color harmony consists of three colors that are next to each other on the color wheel.



44.3478, 41.6582, 44.0602



43.4461, 41.6582, 38.0987



41.5159, 41.6582, 34.3847

Triad

The Triadic color harmony groups three colors that are evenly spaced from another and form a triangle on the color wheel.



43.4461, 41.6582, 38.0987



35.5505, 41.6582, 40.1563



40.0544, 41.6582, 59.7614

Complementary

The Complementary color scheme is a pair of colors which are on the opposite of each other on the color wheel.



43.4461, 41.6582, 38.0987



43.5955, 49.5780, 61.9157

Split Complementary

Split-complementary colors differ from the complementary color scheme. The scheme consists of three colors, the original color and two neighbors of the complement color.



37.7340, 41.6582, 58.4496



43.4461, 41.6582, 38.0987



35.1943, 41.6582, 46.6825

Square

The Square scheme is like the rectangle color scheme, but the four colors are evenly spaced on the color wheel.



43.4461, 41.6582, 38.0987



36.9713, 41.6582, 35.4863



35.9782, 41.6582, 53.4869



42.3397, 41.6582, 56.9107

Rectangle

The Rectangle color scheme consists of four colors that form a rectangle on the color wheel.



43.4461, 41.6582, 38.0987



39.9394, 41.6582, 33.4552



35.9782, 41.6582, 53.4869



39.2524, 41.6582, 59.7959

Sweetspot

The Sweet Spot groups the original color and five complimentary colors.



43.4472, 41.6601, 38.0996



88.7506, 91.1874, 95.1279



45.6724, 40.5838, 55.8788



18.8554, 19.3204, 20.0547



0.0000, 0.0000, 0.0000



20.3446, 21.4041, 23.3091

Same Dimension

The Same Dimension uses a secret algorithm to generate beautiful new colors.



43.4472, 41.6601, 38.0996



71.7640, 67.2177, 58.6265



47.5503, 49.8663, 39.4673



10.7744, 10.9180, 11.1023



15.5421, 8.6014, 0.8411



0.7817, 0.4989, 0.0551

Inverse Universe

The Inverse Universe completely reimagines the original color for something new.



43.5955, 49.5780, 61.9157



72.0607, 83.2527, 106.8791



39.2789, 40.9448, 60.4769



10.7904, 11.7548, 13.6177



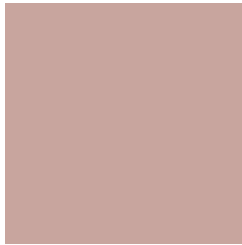
15.4309, 20.2558, 37.8408



0.7718, 1.0413, 1.8055

Previews

White Background



This preview shows how the XYZ color 43.4461, 41.6582, 38.0987 looks on a white background.

Color Contrast Check

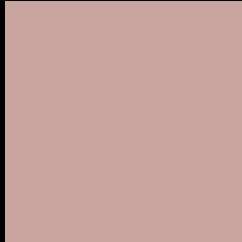
Large Text (above 18pt) WCAG AA × Fail

Any Text WCAG AA × Fail

Large Text (above 18pt) WCAG AAA × Fail

Any Text WCAG AAA × Fail

Black Background



This preview shows how the XYZ color 43.4461, 41.6582, 38.0987 looks on a black background.

Color Contrast Check

Large Text (above 18pt) WCAG AA ✓ Pass

Any Text WCAG AA ✓ Pass

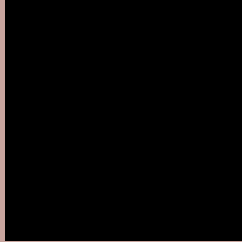
Large Text (above 18pt) WCAG AAA ✓ Pass

Any Text WCAG AAA ✓ Pass

If you want to check with other color combinations, try the [Color Contrast Checker](#).

XYZ 43.4461, 41.6582, 38.0987

Background



This preview shows how black text looks on a background with the XYZ color 43.4461, 41.6582, 38.0987.



This preview shows how white text looks on a background with the XYZ color 43.4461, 41.6582,

Color Blindness Simulation

Color vision deficiency is a very complex topic, and I could not describe the different causes any better than Wikipedia does, so if you want to learn more, you should check out their [article about color blindness](#).

Dichromacy



Original Color

43.4461, 41.6582, 38.0987

Protanopia

39.8645, 41.6974, 40.1297

Deuteranopia

42.4959, 41.7082, 38.1585



Tritanopia

45.0153, 41.4924, 46.1937

Trichromacy



Original Color

43.4461, 41.6582, 38.0987

Protanomaly

41.1145, 41.5139, 39.5642

Deuteranomaly

42.8337, 41.6114, 38.1220

Tritanomaly

44.3460, 41.4765, 43.2046

Monochromacy



Original Color

43.4461, 41.6582, 38.0987

Achromatopsia

40.7470, 42.8690, 46.6844

Achromatomaly

41.4915, 42.1807, 43.4910

CSS Examples

Text

The CSS property to change the color of the text to XYZ 43.4461, 41.6582, 38.0987 is called "color". The color property can be set on classes, ids or directly on the HTML element.

This example shows how text in the color `rgb(200, 165, 158)` looks like.

```
.text, #text, p{  
    color:rgb(200, 165, 158)  
}
```

If you want to add a text shadow in that color use the text-shadow property, you can generate a text shadow directly with our [CSS Text Shadow Generator](#).

Here you see how black text with a 4 pixel rgb(200, 165, 158) colored shadow looks like.

```
.shadow{ text-shadow: 4px 4px 2px rgb(200, 165, 158) }
```

Border

The CSS property to change the border of an element to XYZ 43.4461, 41.6582, 38.0987 is called "border". The border property can be set on classes, ids or directly on the HTML element.

This example shows the color as border, it can be applied via the CSS property "border" or "border-color".

```
.border, #border, table{ border:4px solid rgb(200, 165, 158) }
```


If only the border color should be changed use the property `border-color`.

```
.border{ border-color:rgb(200, 165, 158) }
```

If you want to add a box shadow in that color use:

Here you see how a box with a 4 pixel `rgb(200, 165, 158)` colored shadow looks like.

```
.boxshadow{ -moz-box-shadow:4px 4px 4px  
4px rgb(200, 165, 158); -webkit-box-  
shadow:4px 4px 4px 4px rgb(200, 165, 158);  
box-shadow:4px 4px 4px 4px rgb(200, 165,  
158) }
```

Background

The CSS property to change the background color of an element to XYZ 43.4461, 41.6582, 38.0987 is called "background". The background property can be set on classes, ids or directly on the HTML element.

```
.background, #background, body{  
background: rgb(200, 165, 158) }
```

If only the background color should be changed can be used:

```
.background{ background-color: rgb(200,  
165, 158) }
```

This example shows the color as background, it is applied via the CSS property "background".

To optimize and compress your CSS code, you can use our [online CSS compressor and optimizer](#) based on csstidy. If you want to create a linear or radial gradient as background or border, check our [CSS Gradient Generator](#).

Hey! You found this booklet interesting? Support Converting Colors with the new Membership Option!

The pro membership hides all ads, plus gives you double the colors in the color bucket, and more awesome pro features!

[Learn more, Memberships starting at \\$2.50/m!](#)

**Follow me
on Twitter!**

@ConvertingColor