

Converting Colors

XYZ(43.4494, 39.1278, 33.0196)

Have a look what the booklet for
XYZ(43.4494, 39.1278, 33.0196)
contains.

XYZ(43.5661, 39.2509, 32.8838)	3
<i>Conversions</i>	4
<i>Details</i>	6
<i>Harmonies</i>	12
<i>Previews</i>	24
<i>Color Blindness Simulation</i>	28
<i>CSS Examples</i>	31

Color

**XYZ(43.5661, 39.2509,
32.8838)**

Conversions

Conversions Part 1

Format	Color
Hex	D29B93
RGB	210, 155, 147
RGB Percent	82%, 61%, 58%
CMY	0.1765, 0.3921, 0.4235
CMYK	0.00, 0.26, 0.30, 0.18
HSL	8°, 41%, 70%
HSV	8°, 30%, 82%
XYZ	43.5661, 39.2509, 32.8838
YIQ	170.5330, 35.3480, 9.1720

Conversions

Conversions Part 2

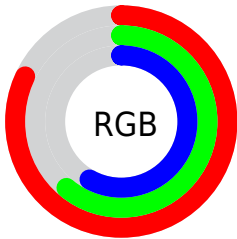
Format	Color
R _Y B	210, 156, 147
Decimal	13802387
CIE Lab	68.93, 19.43, 12.25
CIE LCh	69, 22.965, 32.238
Yxy	39.2509, 0.3765, 0.3392
Android (android.graphics.Color)	4291992467 (0xFFD29B93)
YUV	170.5330, -11.6018, 34.6126
Hunter-Lab	62.6505, 14.4874, 12.7354

Details

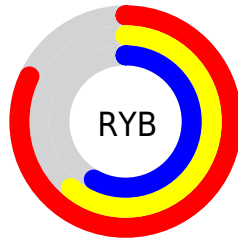
The XYZ color **43.5661, 39.2509, 32.8838** is a light color, and the websafe version is hex **CC9999**. A complement of this color would be **44.7853, 53.0954, 68.8608**, and the grayscale version is **38.5193, 40.5253, 44.1321**.

A 20% lighter version of the original color is **74.8292, 71.5702, 65.1289**, and **20.3881, 17.6152, 13.3918** is the 20% darker color. If you saturate the color by 10%, you get **39.2436, 33.0067, 24.0417**, and if you desaturate by 10%, it is **48.6547, 46.5455, 43.4662**.

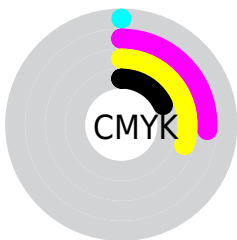
Distribution



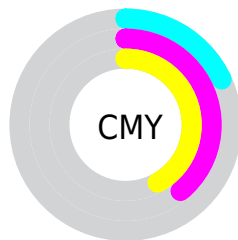
- Red (82%)
- Green (61%)
- Blue (58%)



- Red (82%)
- Yellow (61%)
- Blue (58%)



- Cyan (0%)
- Magenta (26%)
- Yellow (30%)
- Black (18%)





- Cyan (18%)
- Magenta (39%)
- Yellow (42%)

Brightness & Saturation Gradients


These gradients show how the XYZ color 43.5661, 39.2509, 32.8838 changes by changing the brightness by 10 percent. The first figure shows a shift by +10% for each color and the second figure -10%.

Similar to the brightness gradients but the following saturation gradients show a change of the XYZ color 43.5661, 39.2509, 32.8838 by changing the saturation by 10% instead.


 43.5661, 39.2509,
32.8838


 43.5661, 39.2509,
32.8838


351.8169,
342.9560, 329.7417

 30.5260, 26.9550,
21.7671


 79.8148, 74.0215,
65.3080

 20.3882, 17.5394,
13.4892


 103.7542, 97.2649,
87.4525

 12.7875, 10.6198,
7.6316


132.0573,
124.9262, 114.1100

 7.3583, 5.8118,
3.7757


165.0895,
157.3899, 145.6991

 3.7355, 2.7310,
1.5031

203.2162,
195.0404, 182.6383

 1.5536, 0.9930,
0.2203

246.8028,

 0.3619, 0.0000,

238.2619, 225.3461

0.0000

296.2146,
287.4390, 274.2411

■ 0.0000, 0.0000,
0.0000

■ 43.5661, 39.2509,
32.8838

■ 43.5661, 39.2509,
32.8838

■ 39.2436, 33.0067,
24.0417

■ 48.6547, 46.5455,
43.4662

■ 35.6469, 27.7591,
16.8442

■ 54.5409, 54.9300,
55.8728

■ 32.7367, 23.4579,
11.1902

■ 61.2582, 64.4486,
70.1848

■ 30.4686, 20.0466,
6.9663

■ 68.8374, 75.1415,
86.4779

■ 28.7930, 17.4623,
4.0436

■ 77.3076, 87.0468,
104.8237

■ 27.6526, 15.6336,
2.2697

■ 80.3883, 92.4416,
108.2138

■ 26.9630, 14.4710,
1.3721

■ 26.9630, 14.4709,
1.3721

Harmonies

Analogous

The Analogous color harmony consists of three colors that are next to each other on the color wheel.



44.7714, 39.2509, 41.9572



43.5661, 39.2509, 32.8838



40.6737, 39.2509, 27.2997

Triad

The Triadic color harmony groups three colors that are evenly spaced from another and form a triangle on the color wheel.



43.5661, 39.2509, 32.8838



31.4325, 39.2509, 34.0390



37.5816, 39.2509, 66.1428

Complementary

The Complementary color scheme is a pair of colors which are on the opposite of each other on the color wheel.



43.5661, 39.2509, 32.8838



44.7853, 53.0954, 68.8608

Split Complementary

Split-complementary colors differ from the complementary color scheme. The scheme consists of three colors, the original color and two neighbors of the complement color.



34.1311, 39.2509, 63.1139



43.5661, 39.2509, 32.8838



30.7218, 39.2509, 43.5275

Square

The Square scheme is like the rectangle color scheme, but the four colors are evenly spaced on the color wheel.



43.5661, 39.2509, 32.8838



33.6855, 39.2509, 27.8862



31.6777, 39.2509, 54.3860



41.1788, 39.2509, 62.1012

Rectangle

The Rectangle color scheme consists of four colors that form a rectangle on the color wheel.



43.5661, 39.2509, 32.8838



38.2631, 39.2509, 25.7499



31.6777, 39.2509, 54.3860



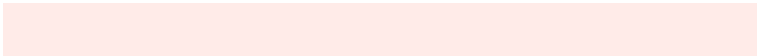
36.3666, 39.2509, 65.9171

Sweetspot

The Sweet Spot groups the original color and five complimentary colors.



43.5671, 39.2527, 32.8846



85.5111, 86.4861, 88.5677



47.7501, 38.8646, 61.2665



17.9946, 18.0736, 18.3035



0.0000, 0.0000, 0.0000



20.3446, 21.4041, 23.3091

Same Dimension

The Same Dimension uses a secret algorithm to generate beautiful new colors.



43.5671, 39.2527, 32.8846



63.1722, 54.5183, 41.9379



49.3723, 50.8631, 34.8197



11.9281, 12.0468, 12.3086



16.4877, 8.9083, 0.8505



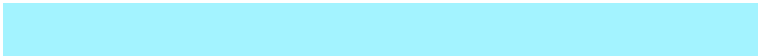
0.9628, 0.5798, 0.0612

Inverse Universe

The Inverse Universe completely reimagines the original color for something new.



44.7853, 53.0954, 68.8608



65.3467, 79.3305, 106.4759



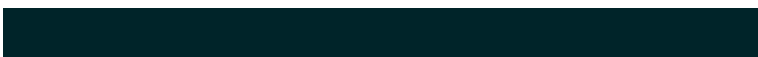
38.2571, 40.0391, 66.6847



12.0249, 13.1401, 15.1462



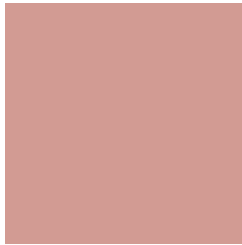
17.5167, 23.6800, 40.8400



1.0161, 1.3974, 2.2957

Previews

White Background



This preview shows how the XYZ color 43.5661, 39.2509, 32.8838 looks on a white background.

Color Contrast Check

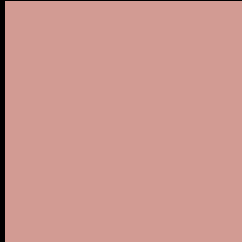
Large Text (above 18pt) WCAG AA × Fail

Any Text WCAG AA × Fail

Large Text (above 18pt) WCAG AAA × Fail

Any Text WCAG AAA × Fail

Black Background



This preview shows how the XYZ color 43.5661, 39.2509, 32.8838 looks on a black background.

Color Contrast Check

Large Text (above 18pt) WCAG AA ✓ Pass

Any Text WCAG AA ✓ Pass

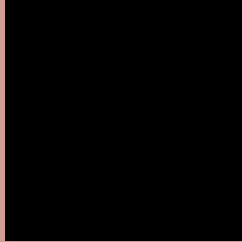
Large Text (above 18pt) WCAG AAA ✓ Pass

Any Text WCAG AAA ✓ Pass

If you want to check with other color combinations, try the [Color Contrast Checker](#).

XYZ 43.5661, 39.2509, 32.8838

Background



This preview shows how black text looks on a background with the XYZ color 43.5661, 39.2509, 32.8838.



This preview shows how white text looks on a background with the XYZ color 43.5661, 39.2509,

32.8838.

Color Blindness Simulation

Color vision deficiency is a very complex topic, and I could not describe the different causes any better than Wikipedia does, so if you want to learn more, you should check out their [article about color blindness](#).

Dichromacy



Original Color

43.5661, 39.2509, 32.8838

Protanopia

37.5146, 39.4523, 36.2097

Deuteranopia

40.1010, 39.2534, 32.6573



Tritanopia

45.0805, 39.1339, 40.2996

Trichromacy



Original Color

43.5661, 39.2509, 32.8838

Protanomaly

39.4221, 39.1201, 34.7513

Deuteranomaly

41.1396, 39.0137, 32.5562

Tritanomaly

44.4268, 39.1000, 37.5533

Monochromacy



Original Color

43.5661, 39.2509, 32.8838

Achromatopsia

38.7082, 40.7240, 44.3485

Achromatomaly

39.9843, 39.8332, 39.7636

CSS Examples

Text

The CSS property to change the color of the text to XYZ 43.5661, 39.2509, 32.8838 is called "color". The color property can be set on classes, ids or directly on the HTML element.

This example shows how text in the color `rgb(210, 155, 147)` looks like.

```
.text, #text, p{  
    color:rgb(210, 155, 147)  
}
```

If you want to add a text shadow in that color use the text-shadow property, you can generate a text shadow directly with our [CSS Text Shadow Generator](#).

Here you see how black text with a 4 pixel rgb(210, 155, 147) colored shadow looks like.

```
.shadow{ text-shadow: 4px 4px 2px rgb(210, 155, 147) }
```

Border

The CSS property to change the border of an element to XYZ 43.5661, 39.2509, 32.8838 is called "border". The border property can be set on classes, ids or directly on the HTML element.

This example shows the color as border, it can be applied via the CSS property "border" or "border-color".

```
.border, #border, table{ border:4px solid rgb(210, 155, 147) }
```


If only the border color should be changed use the property `border-color`.

```
.border{ border-color:rgb(210, 155, 147) }
```

If you want to add a box shadow in that color use:

Here you see how a box with a 4 pixel `rgb(210, 155, 147)` colored shadow looks like.

```
.boxshadow{ -moz-box-shadow:4px 4px 4px  
4px rgb(210, 155, 147); -webkit-box-  
shadow:4px 4px 4px 4px rgb(210, 155, 147);  
box-shadow:4px 4px 4px 4px rgb(210, 155,  
147) }
```

Background

The CSS property to change the background color of an element to XYZ 43.5661, 39.2509, 32.8838 is called "background". The background property can be set on classes, ids or directly on the HTML element.

```
.background, #background, body{  
background: rgb(210, 155, 147) }
```

If only the background color should be changed can be used:

```
.background{ background-color: rgb(210,  
155, 147) }
```

This example shows the color as background, it is applied via the CSS property "background".

To optimize and compress your CSS code, you can use our [online CSS compressor and optimizer](#) based on csstidy. If you want to create a linear or radial gradient as background or border, check our [CSS Gradient Generator](#).

Hey! You found this booklet interesting? Support Converting Colors with the new Membership Option!

The pro membership hides all ads, plus gives you double the colors in the color bucket, and more awesome pro features!

[Learn more, Memberships starting at \\$2.50/m!](#)

**Follow me
on Twitter!**

@ConvertingColor