

Converting Colors

XYZ(43.4579, 39.2545, 30.9782)

Have a look what the booklet for
XYZ(43.4579, 39.2545, 30.9782)
contains.

XYZ(43.4678, 39.2446, 30.8751)	3
<i>Conversions</i>	4
<i>Details</i>	6
<i>Harmonies</i>	12
<i>Previews</i>	24
<i>Color Blindness Simulation</i>	28
<i>CSS Examples</i>	31

Color

**XYZ(43.4678, 39.2446,
30.8751)**

Conversions

Conversions Part 1

Format	Color
Hex	D39B8E
RGB	211, 155, 142
RGB Percent	83%, 61%, 56%
CMY	0.1725, 0.3921, 0.4431
CMYK	0.00, 0.27, 0.33, 0.17
HSL	11°, 44%, 69%
HSV	11°, 33%, 83%
XYZ	43.4678, 39.2446, 30.8751
YIQ	170.2620, 37.5490, 7.8290

Conversions

Conversions Part 2

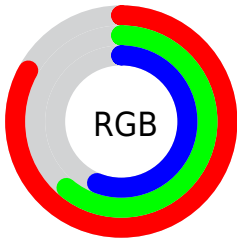
Format	Color
R_{YB}	211, 158, 142
Decimal	13867918
CIE Lab	68.93, 19.15, 15.03
CIE LCh	69, 24.349, 38.125
Yxy	39.2446, 0.3827, 0.3455
Android (android.graphics.Color)	4292057998 (0xFFD39B8E)
YUV	170.2620, -13.9332, 35.7272
Hunter-Lab	62.6455, 14.2260, 14.6305

Details

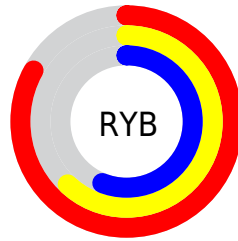
The XYZ color **43.4678, 39.2446, 30.8751** is a light color, and the websafe version is hex **CC9999**. A complement of this color would be **43.1065, 50.8402, 69.1693**, and the grayscale version is **38.3943, 40.3938, 43.9889**.

A 20% lighter version of the original color is **74.2504, 71.3387, 62.0809**, and **20.3997, 17.6419, 12.4553** is the 20% darker color. If you saturate the color by 10%, you get **39.3807, 33.3702, 22.4229**, and if you desaturate by 10%, it is **48.2610, 46.0510, 41.0429**.

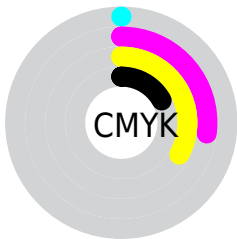
Distribution



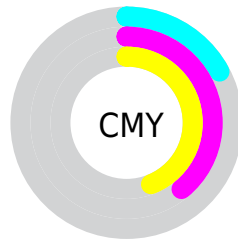
- Red (83%)
- Green (61%)
- Blue (56%)



- Red (83%)
- Yellow (62%)
- Blue (56%)



- Cyan (0%)
- Magenta (27%)
- Yellow (33%)
- Black (17%)





- Cyan (17%)
- Magenta (39%)
- Yellow (44%)

Brightness & Saturation Gradients


These gradients show how the XYZ color 43.4678, 39.2446, 30.8751 changes by changing the brightness by 10 percent. The first figure shows a shift by +10% for each color and the second figure -10%.


Similar to the brightness gradients but the following saturation gradients show a change of the XYZ color 43.4678, 39.2446, 30.8751 by changing the saturation by 10% instead.


 43.4678, 39.2446,
30.8751


 43.4678, 39.2446,
30.8751

351.4211,
342.9293, 320.2959


 30.4484, 26.9501,
20.2461


 79.6676, 74.0118,
62.1206

 20.3290, 17.5357,
12.3882


 103.5788, 97.2533,
83.5743

 12.7441, 10.6172,
6.8829


 131.8513,
124.9126, 109.4732

 7.3283, 5.8100,
3.3116

164.8505,
157.3740, 140.2359

 3.7164, 2.7299,
1.2559

202.9417,
195.0220, 176.2810

 1.5430, 0.9924,
0.0252

246.4903,

 0.3548, 0.0000,

238.2410, 218.0270

0.0000

295.8616,
287.4153, 265.8924

■ 0.0000, 0.0000,
0.0000

■ 43.4678, 39.2446,
30.8751

■ 43.4678, 39.2446,
30.8751

■ 39.3807, 33.3702,
22.4229

■ 48.2610, 46.0510,
41.0429

■ 35.9628, 28.3814,
15.5889

■ 53.7887, 53.8217,
53.0117

■ 33.1782, 24.2365,
10.2697

■ 60.0816, 62.5947,
66.8637

■ 30.9865, 20.8881,
6.3486

■ 67.1676, 72.4040,
82.6757

■ 29.3423, 18.2837,
3.6921

■ 75.0734, 83.2821,
100.5200

■ 28.1930, 16.3644,
2.1398

■ 80.6740, 92.5889,
108.2272

■ 27.6150, 15.3509,
1.5075

Harmonies

Analogous

The Analogous color harmony consists of three colors that are next to each other on the color wheel.



45.1651, 39.2446, 39.7882



43.4678, 39.2446, 30.8751



40.1433, 39.2446, 25.8445

Triad

The Triadic color harmony groups three colors that are evenly spaced from another and form a triangle on the color wheel.



43.4678, 39.2446, 30.8751



30.8112, 39.2446, 35.2704



38.3627, 39.2446, 67.4978

Complementary

The Complementary color scheme is a pair of colors which are on the opposite of each other on the color wheel.



43.4678, 39.2446, 30.8751



43.1065, 50.8402, 69.1693

Split Complementary

Split-complementary colors differ from the complementary color scheme. The scheme consists of three colors, the original color and two neighbors of the complement color.



34.5958, 39.2446, 65.7221



43.4678, 39.2446, 30.8751



30.4069, 39.2446, 45.8148

Square

The Square scheme is like the rectangle color scheme, but the four colors are evenly spaced on the color wheel.



43.4678, 39.2446, 30.8751



32.8917, 39.2446, 28.0596



31.7466, 39.2446, 57.2884



42.0873, 39.2446, 61.7890

Rectangle

The Rectangle color scheme consists of four colors that form a rectangle on the color wheel.



43.4678, 39.2446, 30.8751



37.5449, 39.2446, 24.7702



31.7466, 39.2446, 57.2884



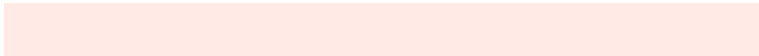
37.0578, 39.2446, 67.7729

Sweetspot

The Sweet Spot groups the original color and five complimentary colors.



43.4688, 39.2465, 30.8759



84.9628, 85.9652, 86.6102



46.7707, 37.2886, 58.3705



17.9031, 18.0054, 17.9195



0.0000, 0.0000, 0.0000



20.3446, 21.4041, 23.3091

Same Dimension

The Same Dimension uses a secret algorithm to generate beautiful new colors.



43.4688, 39.2465, 30.8759



62.3955, 54.0308, 38.3935



49.9765, 52.2619, 33.0451



11.9865, 12.1636, 12.3281



16.7214, 9.3758, 0.9284



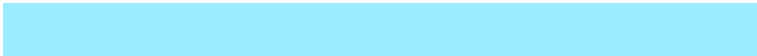
0.9900, 0.6342, 0.0702

Inverse Universe

The Inverse Universe completely reimagines the original color for something new.



43.1065, 50.8402, 69.1693



61.7427, 74.3818, 105.7107



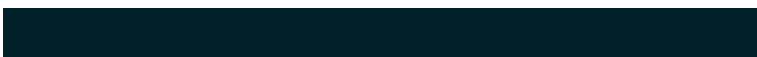
36.1622, 36.9516, 66.8545



11.9611, 13.0125, 15.1249



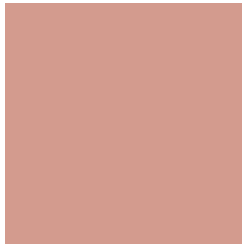
15.9819, 20.6105, 40.3284



0.9437, 1.2525, 2.2716

Previews

White Background



This preview shows how the XYZ color 43.4678, 39.2446, 30.8751 looks on a white background.

Color Contrast Check

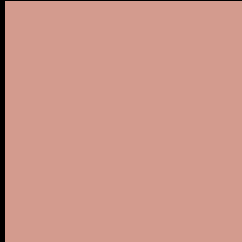
Large Text (above 18pt) WCAG AA × Fail

Any Text WCAG AA × Fail

Large Text (above 18pt) WCAG AAA × Fail

Any Text WCAG AAA × Fail

Black Background



This preview shows how the XYZ color 43.4678, 39.2446, 30.8751 looks on a black background.

Color Contrast Check

Large Text (above 18pt) WCAG AA ✓ Pass

Any Text WCAG AA ✓ Pass

Large Text (above 18pt) WCAG AAA ✓ Pass

Any Text WCAG AAA ✓ Pass

If you want to check with other color combinations, try the [Color Contrast Checker](#).

XYZ 43.4678, 39.2446, 30.8751

Background



This preview shows how black text looks on a background with the XYZ color 43.4678, 39.2446, 30.8751.



This preview shows how white text looks on a background with the XYZ color 43.4678, 39.2446,

30.8751.

Color Blindness Simulation

Color vision deficiency is a very complex topic, and I could not describe the different causes any better than Wikipedia does, so if you want to learn more, you should check out their [article about color blindness](#).

Dichromacy



Original Color

43.4678, 39.2446, 30.8751

Protanopia

37.3319, 39.4053, 34.0721

Deuteranopia

40.2337, 39.3659, 30.6771



Tritanopia

45.2797, 39.2470, 39.8393

Trichromacy



Original Color

43.4678, 39.2446, 30.8751

Protanomaly

39.2718, 39.0885, 32.6691

Deuteranomaly

41.2932, 39.1369, 30.5771

Tritanomaly

44.4590, 39.1461, 36.2230

Monochromacy



Original Color

43.4678, 39.2446, 30.8751

Achromatopsia

38.2080, 40.1978, 43.7754

Achromatomaly

39.8079, 39.7626, 38.8346

CSS Examples

Text

The CSS property to change the color of the text to XYZ 43.4678, 39.2446, 30.8751 is called "color". The color property can be set on classes, ids or directly on the HTML element.

This example shows how text in the color `rgb(211, 155, 142)` looks like.

```
.text, #text, p{  
    color:rgb(211, 155, 142)  
}
```

If you want to add a text shadow in that color use the text-shadow property, you can generate a text shadow directly with our [CSS Text Shadow Generator](#).

Here you see how black text with a 4 pixel rgb(211, 155, 142) colored shadow looks like.

```
.shadow{ text-shadow: 4px 4px 2px rgb(211, 155, 142) }
```

Border

The CSS property to change the border of an element to XYZ 43.4678, 39.2446, 30.8751 is called "border". The border property can be set on classes, ids or directly on the HTML element.

This example shows the color as border, it can be applied via the CSS property "border" or "border-color".

```
.border, #border, table{ border:4px solid rgb(211, 155, 142) }
```


If only the border color should be changed use the property `border-color`.

```
.border{ border-color:rgb(211, 155, 142) }
```

If you want to add a box shadow in that color use:

Here you see how a box with a 4 pixel `rgb(211, 155, 142)` colored shadow looks like.

```
.boxshadow{ -moz-box-shadow:4px 4px 4px  
4px rgb(211, 155, 142); -webkit-box-  
shadow:4px 4px 4px 4px rgb(211, 155, 142);  
box-shadow:4px 4px 4px 4px rgb(211, 155,  
142) }
```

Background

The CSS property to change the background color of an element to XYZ 43.4678, 39.2446, 30.8751 is called "background". The background property can be set on classes, ids or directly on the HTML element.

```
.background, #background, body{  
background: rgb(211, 155, 142) }
```

If only the background color should be changed can be used:

```
.background{ background-color: rgb(211,  
155, 142) }
```

This example shows the color as background, it is applied via the CSS property "background".

To optimize and compress your CSS code, you can use our [online CSS compressor and optimizer](#) based on csstidy. If you want to create a linear or radial gradient as background or border, check our [CSS Gradient Generator](#).

Hey! You found this booklet interesting? Support Converting Colors with the new Membership Option!

The pro membership hides all ads, plus gives you double the colors in the color bucket, and more awesome pro features!

[Learn more, Memberships starting at \\$2.50/m!](#)

**Follow me
on Twitter!**

@ConvertingColor