

# Converting Colors

XYZ(43.5750, 40.4123, 39.3621)

Have a look what the booklet for  
XYZ(43.5750, 40.4123, 39.3621)  
contains.

<b>XYZ(43.6324, 40.4113, 39.2187)</b> .....	3
<b><i>Conversions</i></b> .....	4
<b><i>Details</i></b> .....	6
<b><i>Harmonies</i></b> .....	12
<b><i>Previews</i></b> .....	24
<b><i>Color Blindness Simulation</i></b> .....	28
<b><i>CSS Examples</i></b> .....	31

# Color

**XYZ(43.6324, 40.4113,  
39.2187)**

# Conversions

## Conversions Part 1

Format	Color
Hex	CBA0A1
RGB	203, 160, 161
RGB Percent	80%, 63%, 63%
CMY	0.2039, 0.3725, 0.3686
CMYK	0.00, 0.21, 0.21, 0.20
HSL	359°, 29%, 71%
HSV	359°, 21%, 80%
XYZ	43.6324, 40.4113, 39.2187
YIQ	172.9710, 25.3070, 9.4270

# Conversions

## Conversions Part 2

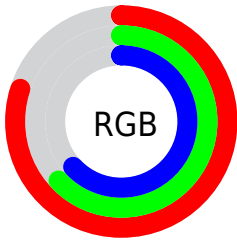
<b>Format</b>	<b>Color</b>
<b>R<sub>YB</sub></b>	203, 160, 161
Decimal	13344929
CIE <sub>Lab</sub>	69.76, 16.05, 5.56
CIE <sub>LCh</sub>	70, 16.985, 19.121
Yxy	40.4113, 0.3540, 0.3278
Android (android.graphics.Color)	4291535009 (0xFFCBA0A1)
YUV	172.9710, -5.9017, 26.3354
Hunter-Lab	63.5699, 11.2696, 7.9206

# Details

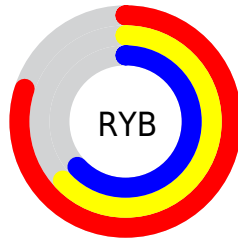
The XYZ color **43.6324, 40.4113, 39.2187** is a light color, and the websafe version is hex **CC9999**. A complement of this color would be **46.5154, 54.4506, 63.9381**, and the grayscale version is **39.7267, 41.7956, 45.5154**.

A 20% lighter version of the original color is **77.9351, 74.8187, 75.2996**, and **20.3898, 18.1468, 17.1799** is the 20% darker color. If you saturate the color by 10%, you get **38.7842, 33.2948, 29.6486**, and if you desaturate by 10%, it is **49.3348, 48.7916, 50.4426**.

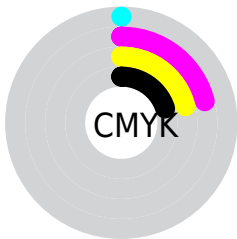
# Distribution



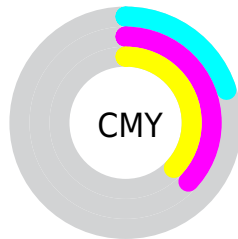
- Red (80%)
- Green (63%)
- Blue (63%)



- Red (80%)
- Yellow (63%)
- Blue (63%)



- Cyan (0%)
- Magenta (21%)
- Yellow (21%)
- Black (20%)




- Cyan (20%)
- Magenta (37%)
- Yellow (37%)


# Brightness & Saturation Gradients

These gradients show how the XYZ color 43.6324, 40.4113, 39.2187 changes by changing the brightness by 10 percent. The first figure shows a shift by +10% for each color and the second figure -10%.


Similar to the brightness gradients but the following saturation gradients show a change of the XYZ color 43.6324, 40.4113, 39.2187 by changing the saturation by 10% instead.





 43.6324, 40.4113,  
39.2187

 43.6324, 40.4113,  
39.2187


352.0837,  
347.8541, 358.2731

 30.5783, 27.8594,  
26.6208


 79.9141, 75.7894,  
75.1963

 20.4282, 18.2197,  
17.0587


 103.8724, 99.3844,  
99.4131

 12.8167, 11.1078,  
10.1139


132.1961,  
127.4292, 128.3399

 7.3786, 6.1394,  
5.3680

165.2506,  
160.3082, 162.3952

 3.7484, 2.9300,  
2.4023

203.4013,  
198.4058, 201.9977

 1.5608, 1.0953,  
0.7877

247.0134,

 0.3667, 0.0000,

242.1064, 247.5658

0.0000

296.4524,  
291.7943, 299.5181

0.0000, 0.0000,  
0.0000

43.6324, 40.4113,  
39.2187

43.6324, 40.4113,  
39.2187

38.7842, 33.2948,  
29.6486

49.3348, 48.7916,  
50.4426

34.7460, 27.3757,  
21.6520

55.9261, 58.4870,  
63.3907

31.4746, 22.5898,  
15.1453

63.4434, 69.5527,  
78.1322

28.9216, 18.8648,  
10.0364

71.9205, 82.0390,  
94.7320

27.0328, 16.1200,  
6.2230

78.4387, 91.4366,  
108.1226

■ 25.7467, 14.2633,  
3.5887

■ 24.9902, 13.1848,  
1.9967

■ 24.6545, 12.7069,  
1.2883

# Harmonies

## Analogous

The Analogous color harmony consists of three colors that are next to each other on the color wheel.



43.8472, 40.4113, 46.9253



43.6324, 40.4113, 39.2187



41.9800, 40.4113, 33.5033

# Triad

The Triadic color harmony groups three colors that are evenly spaced from another and form a triangle on the color wheel.



43.6324, 40.4113, 39.2187



34.5441, 40.4113, 34.8048



37.4191, 40.4113, 60.6344

# Complementary

The Complementary color scheme is a pair of colors which are on the opposite of each other on the color wheel.



43.6324, 40.4113, 39.2187



46.5154, 54.4506, 63.9381

# Split Complementary

Split-complementary colors differ from the complementary color scheme. The scheme consists of three colors, the original color and two neighbors of the complement color.



35.0479, 40.4113, 56.4902



43.6324, 40.4113, 39.2187



33.4415, 40.4113, 41.2009

# Square

The Square scheme is like the rectangle color scheme, but the four colors are evenly spaced on the color wheel.



43.6324, 40.4113, 39.2187



36.7014, 40.4113, 31.1732



33.6214, 40.4113, 49.1571



40.1703, 40.4113, 59.9385



# Rectangle

The Rectangle color scheme consists of four colors that form a rectangle on the color wheel.



43.6324, 40.4113, 39.2187



40.3277, 40.4113, 31.2998



33.6214, 40.4113, 49.1571



36.5535, 40.4113, 59.7433

# Sweetspot

The Sweet Spot groups the original color and five complimentary colors.



43.6335, 40.4131, 39.2195



88.0481, 89.6982, 95.1534



47.5914, 41.9514, 62.0893



18.6901, 18.9699, 20.0606



0.0000, 0.0000, 0.0000



20.3446, 21.4041, 23.3091



# Same Dimension

The Same Dimension uses a secret algorithm to generate beautiful new colors.



43.6335, 40.4131, 39.2195



69.5206, 62.4688, 58.6862



47.3096, 47.9054, 40.0132



11.2227, 11.2178, 11.7073



15.6946, 8.0884, 0.8443



0.8134, 0.4188, 0.0634



# Inverse Universe

The Inverse Universe completely reimagines the original color for something new.



43.6335, 40.4131, 39.2195



69.5206, 62.4688, 58.6862



42.1980, 45.6264, 63.0829



11.2227, 11.2178, 11.7073



15.6946, 8.0884, 0.8443

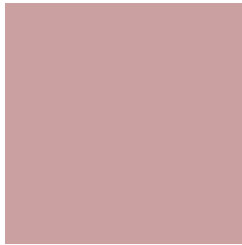


0.8134, 0.4188, 0.0634



# Previews

## White Background



This preview shows how the XYZ color 43.6324, 40.4113, 39.2187 looks on a white background.

## Color Contrast Check

Large Text (above 18pt) WCAG AA × Fail

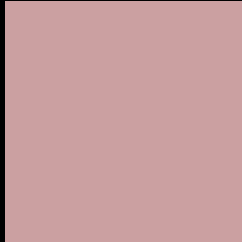
Any Text WCAG AA × Fail

Large Text (above 18pt) WCAG AAA × Fail

Any Text WCAG AAA × Fail



# Black Background



This preview shows how the XYZ color 43.6324, 40.4113, 39.2187 looks on a black background.

## Color Contrast Check

Large Text (above 18pt) WCAG AA ✓ Pass

Any Text WCAG AA ✓ Pass

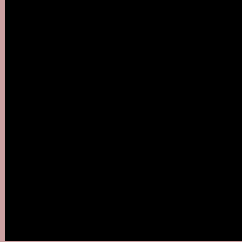
Large Text (above 18pt) WCAG AAA ✓ Pass

Any Text WCAG AAA ✓ Pass

If you want to check with other color combinations, try the [Color Contrast Checker](#).

**XYZ 43.6324, 40.4113, 39.2187**

## **Background**



This preview shows how black text looks on a background with the XYZ color 43.6324, 40.4113, 39.2187.



This preview shows how white text looks on a background with the XYZ color 43.6324, 40.4113,



# Color Blindness Simulation

Color vision deficiency is a very complex topic, and I could not describe the different causes any better than Wikipedia does, so if you want to learn more, you should check out their [article about color blindness](#).

## Dichromacy



### Original Color

43.6324, 40.4113, 39.2187

### Protanopia

38.9369, 40.6166, 41.8640

### Deuteranopia

41.2862, 40.5247, 38.9037



## Tritanopia

44.4794, 40.2314, 43.9492

# Trichromacy



## Original Color

43.6324, 40.4113, 39.2187

## Protanomaly

40.3446, 40.2671, 40.7679

## Deuteranomaly

41.9480, 40.3346, 38.8322

## Tritanomaly

44.2750, 40.4237, 42.0282

# Monochromacy



## Original Color

43.6324, 40.4113, 39.2187

## Achromatopsia

39.7200, 41.7885, 45.5077

## Achromatomaly

40.9312, 41.0602, 43.3042

# CSS Examples

## Text

The CSS property to change the color of the text to XYZ 43.6324, 40.4113, 39.2187 is called "color". The color property can be set on classes, ids or directly on the HTML element.

This example shows how text in the color `rgb(203, 160, 161)` looks like.

```
.text, #text, p{  
    color:rgb(203, 160, 161)  
}
```

If you want to add a text shadow in that color use the text-shadow property, you can generate a text shadow directly with our [CSS Text Shadow Generator](#).

Here you see how black text with a 4 pixel rgb(203, 160, 161) colored shadow looks like.

```
.shadow{ text-shadow: 4px 4px 2px rgb(203, 160, 161) }
```

## Border

The CSS property to change the border of an element to XYZ 43.6324, 40.4113, 39.2187 is called "border". The border property can be set on classes, ids or directly on the HTML element.

This example shows the color as border, it can be applied via the CSS property "border" or "border-color".

```
.border, #border, table{ border:4px solid rgb(203, 160, 161) }
```



If only the border color should be changed use the property `border-color`.

```
.border{ border-color:rgb(203, 160, 161) }
```

If you want to add a box shadow in that color use:

Here you see how a box with a 4 pixel `rgb(203, 160, 161)` colored shadow looks like.

```
.boxshadow{ -moz-box-shadow:4px 4px 4px  
4px rgb(203, 160, 161); -webkit-box-  
shadow:4px 4px 4px 4px rgb(203, 160, 161);  
box-shadow:4px 4px 4px 4px rgb(203, 160,  
161) }
```

# Background

The CSS property to change the background color of an element to XYZ 43.6324, 40.4113, 39.2187 is called "background". The background property can be set on classes, ids or directly on the HTML element.

```
.background, #background, body{  
background: rgb(203, 160, 161) }
```

If only the background color should be changed can be used:

```
.background{ background-color: rgb(203,  
160, 161) }
```

This example shows the color as background, it is applied via the CSS property "background".

To optimize and compress your CSS code, you can use our [online CSS compressor and optimizer](#) based on csstidy. If you want to create a linear or radial gradient as background or border, check our [CSS Gradient Generator](#).

Hey! You found this booklet interesting? Support Converting Colors with the new Membership Option!

The pro membership hides all ads, plus gives you double the colors in the color bucket, and more awesome pro features!

**[Learn more, Memberships starting at \\$2.50/m!](#)**

**Follow me  
on Twitter!**

@ConvertingColor