

Converting Colors

XYZ(43.5818, 43.5865, 44.6000)

Have a look what the booklet for
XYZ(43.5818, 43.5865, 44.6000)
contains.

XYZ(43.5891, 43.5217, 44.6312)	3
<i>Conversions</i>	4
<i>Details</i>	6
<i>Harmonies</i>	12
<i>Previews</i>	24
<i>Color Blindness Simulation</i>	28
<i>CSS Examples</i>	31

Color

**XYZ(43.5891, 43.5217,
44.6312)**

Conversions

Conversions Part 1

Format	Color
Hex	BFACAB
RGB	191, 172, 171
RGB Percent	75%, 67%, 67%
CMY	0.2510, 0.3255, 0.3294
CMYK	0.00, 0.10, 0.10, 0.25
HSL	3°, 14%, 71%
HSV	3°, 10%, 75%
XYZ	43.5891, 43.5217, 44.6312
YIQ	177.5670, 11.6450, 3.7170

Conversions

Conversions Part 2

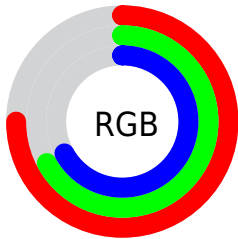
Format	Color
RYB	191, 172, 171
Decimal	12561579
CIELab	71.91, 6.67, 3.00
CIELCh	72, 7.312, 24.202
Yxy	43.5217, 0.3309, 0.3304
Android (android.graphics.Color)	4290751659 (0xFFBFACAB)
YUV	177.5670, -3.2375, 11.7807
Hunter-Lab	65.9710, 2.4914, 6.0684

Details

The XYZ color **43.5891, 43.5217, 44.6312** is a light color, and the websafe version is hex **999999**. A complement of this color would be **44.6119, 49.2456, 56.4448**, and the grayscale version is **42.1015, 44.2941, 48.2362**.

A 20% lighter version of the original color is **79.5543, 80.2033, 83.2393**, and **20.3628, 20.0832, 20.2560** is the 20% darker color. If you saturate the color by 10%, you get **38.6785, 36.4062, 34.6518**, and if you desaturate by 10%, it is **49.2366, 51.6890, 56.1552**.

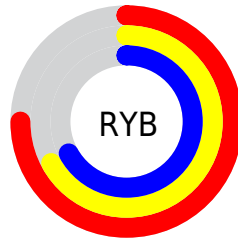
Distribution



Red (75%)

Green (67%)

Blue (67%)



Red (75%)

Yellow (67%)

Blue (67%)

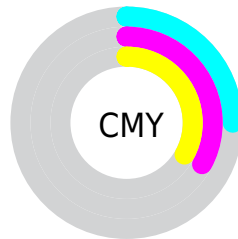


Cyan (0%)

Magenta (10%)

Yellow (10%)

Black (25%)



Cyan (25%)

Magenta (33%)

Yellow (33%)

Brightness & Saturation Gradients

These gradients show how the XYZ color 43.5891, 43.5217, 44.6312 changes by changing the brightness by 10 percent. The first figure shows a shift by +10% for each color and the second figure -10%.

Similar to the brightness gradients but the following saturation gradients show a change of the XYZ color 43.5891, 43.5217, 44.6312 by changing the saturation by 10% instead.

■ 43.5891, 43.5217,
44.6312

■ 43.5891, 43.5217,
44.6312

351.9095,
360.7529, 381.3943

■ 30.5441, 30.2947,
30.8262

■ 79.8493, 80.4975,
83.4793

■ 20.4021, 20.0624,
20.2092

103.7952,
105.0151, 109.3595

■ 12.7976, 12.4404,
12.3616

132.1054,
134.0650, 140.1018

■ 7.3654, 7.0443,
6.8649

165.1454,
168.0316, 176.1248

■ 3.7400, 3.4898,
3.3006

203.2804,
207.2993, 217.8470

■ 1.5561, 1.3925,
1.2501

246.8759,

■ 0.3635, 0.2112,

252.2525, 265.6869

0.0204

296.2971,
303.2755, 320.0632

■ 0.0000, 0.0000,
0.0000

■ 43.5891, 43.5217,
44.6312

■ 43.5891, 43.5217,
44.6312

■ 38.6785, 36.4062,
34.6518

■ 49.2366, 51.6890,
56.1552

■ 34.4709, 30.2943,
26.1489

■ 55.6459, 60.9424,
69.2826

■ 30.9353, 25.1426,
19.0530

■ 62.8451, 71.3216,
84.0726

■ 28.0369, 20.9022,
13.2884

■ 70.8597, 82.8628,
100.5804

■ 25.7378, 17.5202,
8.7720

■ 75.2961, 89.8165,
107.9755

■ 23.9958, 14.9380,
5.4116

■ 22.7636, 13.0896,
3.1019

■ 21.9859, 11.8987,
1.7188

■ 21.5901, 11.2845,
1.0402

Harmonies

Analogous

The Analogous color harmony consists of three colors that are next to each other on the color wheel.



43.7947, 43.5217, 48.0840



43.5891, 43.5217, 44.6312



42.7828, 43.5217, 42.0396

Triad

The Triadic color harmony groups three colors that are evenly spaced from another and form a triangle on the color wheel.



43.5891, 43.5217, 44.6312



39.4539, 43.5217, 43.4881



41.1246, 43.5217, 54.5441

Complementary

The Complementary color scheme is a pair of colors which are on the opposite of each other on the color wheel.



43.5891, 43.5217, 44.6312



44.6119, 49.2456, 56.4448

Split Complementary

Split-complementary colors differ from the complementary color scheme. The scheme consists of three colors, the original color and two neighbors of the complement color.



39.9810, 43.5217, 53.1712



43.5891, 43.5217, 44.6312



39.0289, 43.5217, 46.6983

Square

The Square scheme is like the rectangle color scheme, but the four colors are evenly spaced on the color wheel.



43.5891, 43.5217, 44.6312



40.3920, 43.5217, 41.4031



39.2199, 43.5217, 50.2555



42.3557, 43.5217, 53.9229

Rectangle

The Rectangle color scheme consists of four colors that form a rectangle on the color wheel.



43.5891, 43.5217, 44.6312



42.0215, 43.5217, 41.0897



39.2199, 43.5217, 50.2555



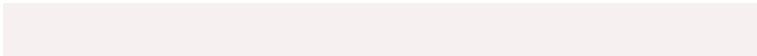
40.7175, 43.5217, 54.2985

Sweetspot

The Sweet Spot groups the original color and five complimentary colors.



43.5903, 43.5236, 44.6321



85.4480, 88.6229, 94.9855



45.3436, 43.9205, 54.8034



18.5783, 19.1929, 20.4794



92.9021, 97.7402, 106.4391



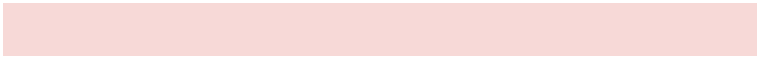
19.4759, 20.4902, 22.3138

Same Dimension

The Same Dimension uses a secret algorithm to generate beautiful new colors.



43.5903, 43.5236, 44.6321



75.5354, 74.2808, 74.7776



45.5651, 47.4732, 45.2904



9.5675, 9.6111, 9.9275



14.2063, 7.4514, 0.6895



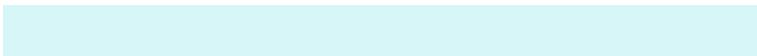
0.5698, 0.3185, 0.0314

Inverse Universe

The Inverse Universe completely reimagines the original color for something new.



44.6119, 49.2456, 56.4448



77.7998, 86.9651, 100.9646



42.5204, 45.0627, 55.7477



9.7665, 10.7253, 12.2276



17.1133, 24.3384, 36.1887



0.6830, 0.9787, 1.4218

Previews

White Background



This preview shows how the XYZ color 43.5891, 43.5217, 44.6312 looks on a white background.

Color Contrast Check

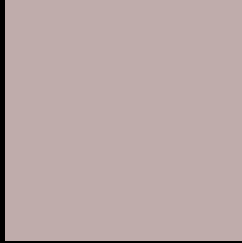
Large Text (above 18pt) WCAG AA × Fail

Any Text WCAG AA × Fail

Large Text (above 18pt) WCAG AAA × Fail

Any Text WCAG AAA × Fail

Black Background



This preview shows how the XYZ color 43.5891, 43.5217, 44.6312 looks on a black background.

Color Contrast Check

Large Text (above 18pt) WCAG AA ✓ Pass

Any Text WCAG AA ✓ Pass

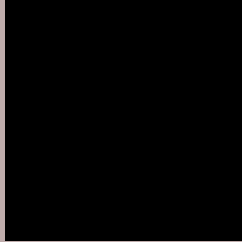
Large Text (above 18pt) WCAG AAA ✓ Pass

Any Text WCAG AAA ✓ Pass

If you want to check with other color combinations, try the [Color Contrast Checker](#).

XYZ 43.5891, 43.5217, 44.6312

Background



This preview shows how black text looks on a background with the XYZ color 43.5891, 43.5217, 44.6312.



This preview shows how white text looks on a background with the XYZ color 43.5891, 43.5217,

Color Blindness Simulation

Color vision deficiency is a very complex topic, and I could not describe the different causes any better than Wikipedia does, so if you want to learn more, you should check out their [article about color blindness](#).

Dichromacy



Original Color

43.5891, 43.5217, 44.6312

Protanopia

41.6952, 43.3804, 45.7108

Deuteranopia

44.2311, 43.2918, 44.5530



Tritanopia

44.9143, 43.5058, 50.8300

Trichromacy



Original Color

43.5891, 43.5217, 44.6312

Protanomaly

42.3496, 43.4410, 45.1826

Deuteranomaly

44.1617, 43.5354, 44.6037

Tritanomaly

44.4378, 43.5870, 48.7188

Monochromacy



Original Color

43.5891, 43.5217, 44.6312

Achromatopsia

42.3164, 44.5201, 48.4824

Achromatomaly

42.7916, 44.2131, 46.8361

CSS Examples

Text

The CSS property to change the color of the text to XYZ 43.5891, 43.5217, 44.6312 is called "color". The color property can be set on classes, ids or directly on the HTML element.

This example shows how text in the color `rgb(191, 172, 171)` looks like.

```
.text, #text, p{  
    color:rgb(191, 172, 171)  
}
```

If you want to add a text shadow in that color use the text-shadow property, you can generate a text shadow directly with our [CSS Text Shadow Generator](#).

Here you see how black text with a 4 pixel rgb(191, 172, 171) colored shadow looks like.

```
.shadow{ text-shadow: 4px 4px 2px rgb(191, 172, 171) }
```

Border

The CSS property to change the border of an element to XYZ 43.5891, 43.5217, 44.6312 is called "border". The border property can be set on classes, ids or directly on the HTML element.

This example shows the color as border, it can be applied via the CSS property "border" or "border-color".

```
.border, #border, table{ border:4px solid rgb(191, 172, 171) }
```


If only the border color should be changed use the property `border-color`.

```
.border{ border-color:rgb(191, 172, 171) }
```

If you want to add a box shadow in that color use:

Here you see how a box with a 4 pixel `rgb(191, 172, 171)` colored shadow looks like.

```
.boxshadow{ -moz-box-shadow:4px 4px 4px  
4px rgb(191, 172, 171); -webkit-box-  
shadow:4px 4px 4px 4px rgb(191, 172, 171);  
box-shadow:4px 4px 4px 4px rgb(191, 172,  
171) }
```

Background

The CSS property to change the background color of an element to XYZ 43.5891, 43.5217, 44.6312 is called "background". The background property can be set on classes, ids or directly on the HTML element.

```
.background, #background, body{  
background: rgb(191, 172, 171) }
```

If only the background color should be changed can be used:

```
.background{ background-color: rgb(191,  
172, 171) }
```

This example shows the color as background, it is applied via the CSS property "background".

To optimize and compress your CSS code, you can use our [online CSS compressor and optimizer](#) based on csstidy. If you want to create a linear or radial gradient as background or border, check our [CSS Gradient Generator](#).

Hey! You found this booklet interesting? Support Converting Colors with the new Membership Option!

The pro membership hides all ads, plus gives you double the colors in the color bucket, and more awesome pro features!

[Learn more, Memberships starting at \\$2.50/m!](#)

**Follow me
on Twitter!**

@ConvertingColor