

Converting Colors

XYZ(43.6089, 41.4456, 42.2893)

Have a look what the booklet for
XYZ(43.6089, 41.4456, 42.2893)
contains.

XYZ(43.5392, 41.3467, 42.2452)	3
<i>Conversions</i>	4
<i>Details</i>	6
<i>Harmonies</i>	12
<i>Previews</i>	24
<i>Color Blindness Simulation</i>	28
<i>CSS Examples</i>	31

Color

**XYZ(43.5392, 41.3467,
42.2452)**

Conversions

Conversions Part 1

Format	Color
Hex	C6A4A7
RGB	198, 164, 167
RGB Percent	78%, 64%, 65%
CMY	0.2235, 0.3568, 0.3451
CMYK	0.00, 0.17, 0.16, 0.22
HSL	355°, 23%, 71%
HSV	355°, 17%, 78%
XYZ	43.5392, 41.3467, 42.2452
YIQ	174.5080, 19.3010, 8.1410

Conversions

Conversions Part 2

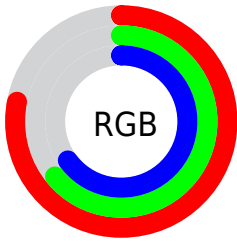
Format	Color
RYB	198, 164, 167
Decimal	13018279
CIELab	70.42, 12.94, 3.13
CIELCh	70, 13.315, 13.577
Yxy	41.3467, 0.3425, 0.3252
Android (android.graphics.Color)	4291208359 (0xFFC6A4A7)
YUV	174.5080, -3.7014, 20.6025
Hunter-Lab	64.3014, 8.3369, 6.0582

Details

The XYZ color **43.5392, 41.3467, 42.2452** is a light color, and the websafe version is hex **CC9999**. A complement of this color would be **45.3559, 52.2218, 59.3215**, and the grayscale version is **40.5059, 42.6154, 46.4082**.

A 20% lighter version of the original color is **79.7563, 77.1970, 79.8041**, and **20.3903, 18.7554, 18.7651** is the 20% darker color. If you saturate the color by 10%, you get **38.7137, 34.1827, 32.9688**, and if you desaturate by 10%, it is **49.1517, 49.7110, 52.9346**.

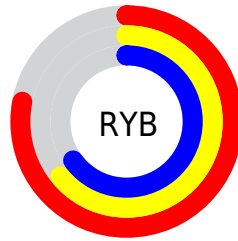
Distribution



Red (78%)

Green (64%)

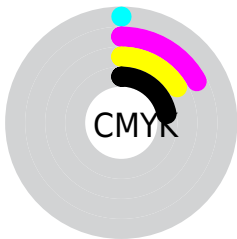
Blue (65%)



Red (78%)

Yellow (64%)

Blue (65%)

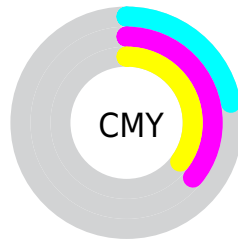


Cyan (0%)

Magenta (17%)

Yellow (16%)

Black (22%)



Cyan (22%)


Magenta (36%)


Yellow (35%)

Brightness & Saturation Gradients


These gradients show how the XYZ color 43.5392, 41.3467, 42.2452 changes by changing the brightness by 10 percent. The first figure shows a shift by +10% for each color and the second figure -10%.


Similar to the brightness gradients but the following saturation gradients show a change of the XYZ color 43.5392, 41.3467, 42.2452 by changing the saturation by 10% instead.


 43.5392, 41.3467,
42.2452


 43.5392, 41.3467,
42.2452

351.7086,
351.7676, 371.3280

 30.5048, 28.5901,
28.9663


 79.7746, 77.2099,
79.8447

 20.3720, 18.7710,
18.8100


 103.7062,
101.0853, 105.0024

 12.7756, 11.5049,
11.3576


132.0009,
129.4358, 134.9568

 7.3501, 6.4075,
6.1907

165.0241,
162.6456, 170.1264

 3.7303, 3.0944,
2.8907

203.1411,
201.0994, 210.9298

 1.5507, 1.1812,
1.0391

246.7173,

 0.3599, 0.0463,

245.1813, 257.7855

0.0000

296.1180,
295.2759, 311.1120

■ 0.0000, 0.0000,
0.0000

■ 43.5392, 41.3467,
42.2452

■ 43.5392, 41.3467,
42.2452

■ 38.7137, 34.1827,
32.9688

■ 49.1517, 49.7110,
52.9346

■ 34.6367, 28.1586,
25.0438

■ 55.5807, 59.3211,
65.0900

■ 31.2717, 23.2172,
18.4078

■ 62.8581, 70.2272,
78.7647

■ 28.5776, 19.2944,
12.9925

■ 71.0135, 82.4749,
94.0088

■ 26.5093, 16.3189,
8.7234

■ 77.0989, 90.7458,
108.0599

■ 25.0160, 14.2106,
5.5177

■ 24.0388, 12.8760,
3.2813

■ 23.5000, 12.1876,
1.9017

■ 23.3936, 12.0477,
1.6415

Harmonies

Analogous

The Analogous color harmony consists of three colors that are next to each other on the color wheel.



43.4812, 41.3467, 48.5186



43.5392, 41.3467, 42.2452



42.4315, 41.3467, 37.2018

Triad

The Triadic color harmony groups three colors that are evenly spaced from another and form a triangle on the color wheel.



43.5392, 41.3467, 42.2452



36.4648, 41.3467, 36.8299



38.1194, 41.3467, 57.6169

Complementary

The Complementary color scheme is a pair of colors which are on the opposite of each other on the color wheel.



43.5392, 41.3467, 42.2452



45.3559, 52.2218, 59.3215

Split Complementary

Split-complementary colors differ from the complementary color scheme. The scheme consists of three colors, the original color and two neighbors of the complement color.



36.3242, 41.3467, 53.8622



43.5392, 41.3467, 42.2452



35.3935, 41.3467, 41.6928

Square

The Square scheme is like the rectangle color scheme, but the four colors are evenly spaced on the color wheel.



43.5392, 41.3467, 42.2452



38.3178, 41.3467, 34.2773



35.3431, 41.3467, 47.9127



40.2964, 41.3467, 57.8000

Rectangle

The Rectangle color scheme consists of four colors that form a rectangle on the color wheel.



43.5392, 41.3467, 42.2452



41.2040, 41.3467, 35.0531



35.3431, 41.3467, 47.9127



37.4532, 41.3467, 56.7159

Sweetspot

The Sweet Spot groups the original color and five complimentary colors.



43.5403, 41.3486, 42.2461



89.3008, 91.4069, 98.0269



45.8721, 42.1789, 59.1501



18.9476, 19.3162, 20.6663



0.0000, 0.0000, 0.0000



20.3446, 21.4041, 23.3091

Same Dimension

The Same Dimension uses a secret algorithm to generate beautiful new colors.



43.5403, 41.3486, 42.2461



73.3929, 67.7079, 67.7015



45.8317, 46.3694, 41.6589



10.6712, 10.6519, 11.2518



15.2271, 7.8404, 1.1401



0.7344, 0.3766, 0.1243

Inverse Universe

The Inverse Universe completely reimagines the original color for something new.



43.5403, 41.3486, 42.2461



73.3929, 67.7079, 67.7015



42.7281, 46.4186, 60.1341



10.6712, 10.6519, 11.2518



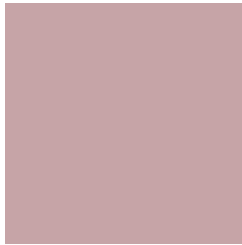
15.2271, 7.8404, 1.1401



0.7344, 0.3766, 0.1243

Previews

White Background



This preview shows how the XYZ color 43.5392, 41.3467, 42.2452 looks on a white background.

Color Contrast Check

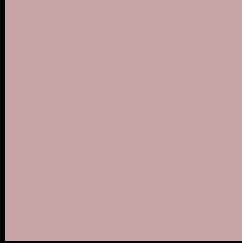
Large Text (above 18pt) WCAG AA × Fail

Any Text WCAG AA × Fail

Large Text (above 18pt) WCAG AAA × Fail

Any Text WCAG AAA × Fail

Black Background



This preview shows how the XYZ color 43.5392, 41.3467, 42.2452 looks on a black background.

Color Contrast Check

Large Text (above 18pt) WCAG AA ✓ Pass

Any Text WCAG AA ✓ Pass

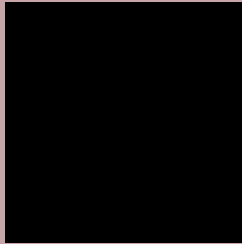
Large Text (above 18pt) WCAG AAA ✓ Pass

Any Text WCAG AAA ✓ Pass

If you want to check with other color combinations, try the [Color Contrast Checker](#).

XYZ 43.5392, 41.3467, 42.2452

Background



This preview shows how black text looks on a background with the XYZ color 43.5392, 41.3467, 42.2452.



This preview shows how white text looks on a background with the XYZ color 43.5392, 41.3467,

Color Blindness Simulation

Color vision deficiency is a very complex topic, and I could not describe the different causes any better than Wikipedia does, so if you want to learn more, you should check out their [article about color blindness](#).

Dichromacy



Original Color

43.5392, 41.3467, 42.2452

Protanopia

40.0077, 41.6754, 44.4636

Deuteranopia

42.1875, 41.4670, 41.8568



Tritanopia

44.3882, 41.4316, 46.2150

Trichromacy



Original Color

43.5392, 41.3467, 42.2452

Protanomaly

41.2108, 41.4686, 43.8624

Deuteranomaly

42.7673, 41.4949, 41.8316

Tritanomaly

44.0968, 41.3151, 44.6802

Monochromacy



Original Color

43.5392, 41.3467, 42.2452

Achromatopsia

40.7470, 42.8690, 46.6844

Achromatomaly

41.5377, 42.1717, 44.9804

CSS Examples

Text

The CSS property to change the color of the text to XYZ 43.5392, 41.3467, 42.2452 is called "color". The color property can be set on classes, ids or directly on the HTML element.

This example shows how text in the color `rgb(198, 164, 167)` looks like.

```
.text, #text, p{  
    color:rgb(198, 164, 167)  
}
```

If you want to add a text shadow in that color use the text-shadow property, you can generate a text shadow directly with our [CSS Text Shadow Generator](#).

Here you see how black text with a 4 pixel rgb(198, 164, 167) colored shadow looks like.

```
.shadow{ text-shadow: 4px 4px 2px rgb(198, 164, 167) }
```

Border

The CSS property to change the border of an element to XYZ 43.5392, 41.3467, 42.2452 is called "border". The border property can be set on classes, ids or directly on the HTML element.

This example shows the color as border, it can be applied via the CSS property "border" or "border-color".

```
.border, #border, table{ border:4px solid rgb(198, 164, 167) }
```


If only the border color should be changed use the property `border-color`.

```
.border{ border-color:rgb(198, 164, 167) }
```

If you want to add a box shadow in that color use:

Here you see how a box with a 4 pixel `rgb(198, 164, 167)` colored shadow looks like.

```
.boxshadow{ -moz-box-shadow:4px 4px 4px  
4px rgb(198, 164, 167); -webkit-box-  
shadow:4px 4px 4px 4px rgb(198, 164, 167);  
box-shadow:4px 4px 4px 4px rgb(198, 164,  
167) }
```

Background

The CSS property to change the background color of an element to XYZ 43.5392, 41.3467, 42.2452 is called "background". The background property can be set on classes, ids or directly on the HTML element.

```
.background, #background, body{  
background: rgb(198, 164, 167) }
```

If only the background color should be changed can be used:

```
.background{ background-color: rgb(198,  
164, 167) }
```

This example shows the color as background, it is applied via the CSS property "background".

To optimize and compress your CSS code, you can use our [online CSS compressor and optimizer](#) based on csstidy. If you want to create a linear or radial gradient as background or border, check our [CSS Gradient Generator](#).

Hey! You found this booklet interesting? Support Converting Colors with the new Membership Option!

The pro membership hides all ads, plus gives you double the colors in the color bucket, and more awesome pro features!

[Learn more, Memberships starting at \\$2.50/m!](#)

**Follow me
on Twitter!**

@ConvertingColor