

# Converting Colors

XYZ(43.6249, 42.1702, 42.3671)

Have a look what the booklet for  
XYZ(43.6249, 42.1702, 42.3671)  
contains.

<b>XYZ(43.5587, 42.1632, 42.4017)</b> .....	3
<b><i>Conversions</i></b> .....	4
<b><i>Details</i></b> .....	6
<b><i>Harmonies</i></b> .....	12
<b><i>Previews</i></b> .....	24
<b><i>Color Blindness Simulation</i></b> .....	28
<b><i>CSS Examples</i></b> .....	31

# Color

**XYZ(43.5587, 42.1632,  
42.4017)**

# Conversions

## Conversions Part 1

Format	Color
Hex	C4A7A7
RGB	196, 167, 167
RGB Percent	77%, 65%, 65%
CMY	0.2314, 0.3451, 0.3451
CMYK	0.00, 0.15, 0.15, 0.23
HSL	0°, 20%, 71%
HSV	0°, 15%, 77%
XYZ	43.5587, 42.1632, 42.4017
YIQ	175.6710, 17.2840, 6.1480

# Conversions

## Conversions Part 2

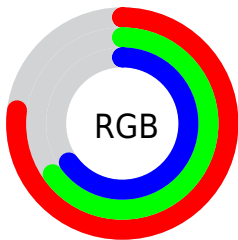
<b>Format</b>	<b>Color</b>
<b>RYB</b>	196, 167, 167
Decimal	12887975
CIELab	70.98, 10.56, 3.92
CIELCh	71, 11.268, 20.359
Yxy	42.1632, 0.3400, 0.3291
Android (android.graphics.Color)	4291078055 (0xFFC4A7A7)
YUV	175.6710, -4.2748, 17.8285
Hunter-Lab	64.9332, 6.1089, 6.7366

# Details

The XYZ color **43.5587, 42.1632, 42.4017** is a light color, and the websafe version is hex **CC9999**. A complement of this color would be **45.6397, 51.6797, 59.7947**, and the grayscale version is **41.1117, 43.2528, 47.1023**.

A 20% lighter version of the original color is **79.8141, 78.3991, 80.0331**, and **20.3806, 19.2501, 18.8611** is the 20% darker color. If you saturate the color by 10%, you get **38.5603, 34.8493, 32.4633**, and if you desaturate by 10%, it is **49.3782, 50.6788, 53.9697**.

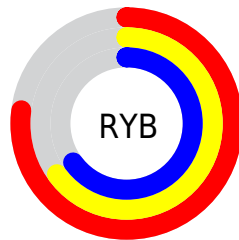
# Distribution



Red (77%)

Green (65%)

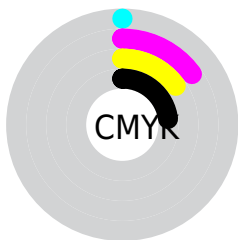
Blue (65%)



Red (77%)

Yellow (65%)

Blue (65%)

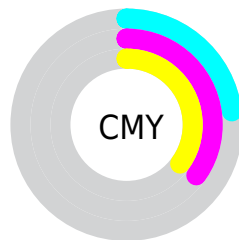


Cyan (0%)

Magenta (15%)

Yellow (15%)

Black (23%)



Cyan (23%)

Magenta (35%)


Yellow (35%)


# Brightness & Saturation Gradients

These gradients show how the XYZ color 43.5587, 42.1632, 42.4017 changes by changing the brightness by 10 percent. The first figure shows a shift by +10% for each color and the second figure -10%.


Similar to the brightness gradients but the following saturation gradients show a change of the XYZ color 43.5587, 42.1632, 42.4017 by changing the saturation by 10% instead.





 43.5587, 42.1632,  
42.4017


 43.5587, 42.1632,  
42.4017


351.7871,  
355.1590, 371.9941

 30.5201, 29.2291,  
29.0880


 79.8038, 78.4466,  
80.0839

 20.3838, 19.2542,  
18.9013


 103.7410,  
102.5646, 105.2895

 12.7842, 11.8541,  
11.4229


132.0418,  
131.1794, 135.2961

 7.3561, 6.6444,  
6.2343

165.0715,  
164.6754, 170.5223

 3.7341, 3.2407,  
2.9170

203.1956,  
203.4370, 211.3867

 1.5528, 1.2587,  
1.0524

246.7793,

 0.3614, 0.1089,

247.8485, 258.3078

0.0000

296.1880,  
298.2944, 311.7041

■ 0.0000, 0.0000,  
0.0000

■ 43.5587, 42.1632,  
42.4017

■ 43.5587, 42.1632,  
42.4017

■ 38.5603, 34.8493,  
32.4633

■ 49.3782, 50.6788,  
53.9697

■ 34.3427, 28.6778,  
24.0788

■ 56.0497, 60.4408,  
67.2329

■ 30.8675, 23.5927,  
17.1704

■ 63.6067, 71.4986,  
82.2568

■ 28.0919, 19.5312,  
11.6528

■ 72.0800, 83.8972,  
99.1026

■ 25.9685, 16.4238,  
7.4318

■ 76.5751, 90.4759,  
108.0354

■ 24.4439, 14.1928,  
4.4014

■ 23.4567, 12.7481,  
2.4393

■ 22.9320, 11.9801,  
1.3967

■ 22.7654, 11.7364,  
1.0655

# Harmonies

## Analogous

The Analogous color harmony consists of three colors that are next to each other on the color wheel.



43.7436, 42.1632, 47.6634



43.5587, 42.1632, 42.4017



42.4245, 42.1632, 38.3921

# Triad

The Triadic color harmony groups three colors that are evenly spaced from another and form a triangle on the color wheel.



43.5587, 42.1632, 42.4017



37.3564, 42.1632, 39.6182



39.4728, 42.1632, 56.8848

# Complementary

The Complementary color scheme is a pair of colors which are on the opposite of each other on the color wheel.



43.5587, 42.1632, 42.4017



45.6397, 51.6797, 59.7947

# Split Complementary

Split-complementary colors differ from the complementary color scheme. The scheme consists of three colors, the original color and two neighbors of the complement color.



37.8136, 42.1632, 54.3471



43.5587, 42.1632, 42.4017



36.6172, 42.1632, 44.1973

# Square

The Square scheme is like the rectangle color scheme, but the four colors are evenly spaced on the color wheel.



43.5587, 42.1632, 42.4017



38.8309, 42.1632, 36.8744



36.7819, 42.1632, 49.6036



41.3451, 42.1632, 56.3095



# Rectangle

The Rectangle color scheme consists of four colors that form a rectangle on the color wheel.



43.5587, 42.1632, 42.4017



41.3016, 42.1632, 36.8360



36.7819, 42.1632, 49.6036



38.8726, 42.1632, 56.3604

# Sweetspot

The Sweet Spot groups the original color and five complimentary colors.



43.5599, 42.1651, 42.4026



90.2832, 93.0250, 99.4234



46.5479, 43.3593, 58.1408



19.1386, 19.6394, 20.9114



0.0000, 0.0000, 0.0000



20.3446, 21.4041, 23.3091



# Same Dimension

The Same Dimension uses a secret algorithm to generate beautiful new colors.



43.5599, 42.1651, 42.4026



75.5874, 71.5212, 70.2076



46.3662, 47.7777, 43.3380



10.0733, 10.0781, 10.4762



14.6277, 7.5412, 0.6846



0.6321, 0.3259, 0.0296

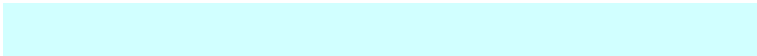


# Inverse Universe

The Inverse Universe completely reimagines the original color for something new.



45.6397, 51.6797, 59.7947



80.1310, 92.3062, 108.2013



42.5264, 45.4530, 58.7569



10.3685, 11.4283, 12.9442



19.0825, 27.9215, 37.9402

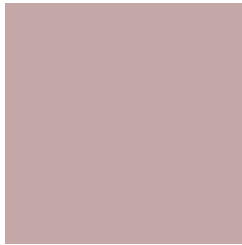


0.8245, 1.2065, 1.6393



# Previews

## White Background



This preview shows how the XYZ color 43.5587, 42.1632, 42.4017 looks on a white background.

## Color Contrast Check

Large Text (above 18pt) WCAG AA × Fail

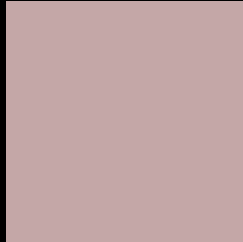
Any Text WCAG AA × Fail

Large Text (above 18pt) WCAG AAA × Fail

Any Text WCAG AAA × Fail



# Black Background



This preview shows how the XYZ color 43.5587, 42.1632, 42.4017 looks on a black background.

## Color Contrast Check

Large Text (above 18pt) WCAG AA ✓ Pass

Any Text WCAG AA ✓ Pass

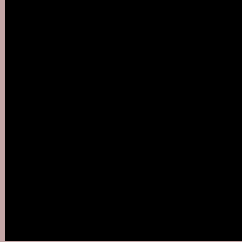
Large Text (above 18pt) WCAG AAA ✓ Pass

Any Text WCAG AAA ✓ Pass

If you want to check with other color combinations, try the [Color Contrast Checker](#).

**XYZ 43.5587, 42.1632, 42.4017**

## **Background**



This preview shows how black text looks on a background with the XYZ color 43.5587, 42.1632, 42.4017.



This preview shows how white text looks on a background with the XYZ color 43.5587, 42.1632,



# Color Blindness Simulation

Color vision deficiency is a very complex topic, and I could not describe the different causes any better than Wikipedia does, so if you want to learn more, you should check out their [article about color blindness](#).

## Dichromacy



### Original Color

43.5587, 42.1632, 42.4017

### Protanopia

40.5594, 42.2544, 44.0484

### Deuteranopia

42.9700, 42.1327, 42.4269



## Tritanopia

44.5170, 41.9949, 47.8790

# Trichromacy



## Original Color

43.5587, 42.1632, 42.4017

## Protanomaly

41.7319, 42.3047, 43.5022

## Deuteranomaly

43.2258, 42.2646, 42.4389

## Tritanomaly

44.3022, 42.1987, 45.8546

# Monochromacy



## Original Color

43.5587, 42.1632, 42.4017

## Achromatopsia

41.2663, 43.4154, 47.2793

## Achromatomaly

42.0148, 42.9716, 45.6151

# CSS Examples

## Text

The CSS property to change the color of the text to XYZ 43.5587, 42.1632, 42.4017 is called "color". The color property can be set on classes, ids or directly on the HTML element.

This example shows how text in the color `rgb(196, 167, 167)` looks like.

```
.text, #text, p{  
    color:rgb(196, 167, 167)  
}
```

If you want to add a text shadow in that color use the text-shadow property, you can generate a text shadow directly with our [CSS Text Shadow Generator](#).

Here you see how black text with a 4 pixel rgb(196, 167, 167) colored shadow looks like.

```
.shadow{ text-shadow: 4px 4px 2px rgb(196, 167, 167) }
```

## Border

The CSS property to change the border of an element to XYZ 43.5587, 42.1632, 42.4017 is called "border". The border property can be set on classes, ids or directly on the HTML element.

This example shows the color as border, it can be applied via the CSS property "border" or "border-color".

```
.border, #border, table{ border:4px solid rgb(196, 167, 167) }
```



If only the border color should be changed use the property `border-color`.

```
.border{ border-color:rgb(196, 167, 167) }
```

If you want to add a box shadow in that color use:

Here you see how a box with a 4 pixel `rgb(196, 167, 167)` colored shadow looks like.

```
.boxshadow{ -moz-box-shadow:4px 4px 4px  
4px rgb(196, 167, 167); -webkit-box-  
shadow:4px 4px 4px 4px rgb(196, 167, 167);  
box-shadow:4px 4px 4px 4px rgb(196, 167,  
167) }
```

# Background

The CSS property to change the background color of an element to XYZ 43.5587, 42.1632, 42.4017 is called "background". The background property can be set on classes, ids or directly on the HTML element.

```
.background, #background, body{  
background: rgb(196, 167, 167) }
```

If only the background color should be changed can be used:

```
.background{ background-color: rgb(196,  
167, 167) }
```

This example shows the color as background, it is applied via the CSS property "background".

To optimize and compress your CSS code, you can use our [online CSS compressor and optimizer](#) based on csstidy. If you want to create a linear or radial gradient as background or border, check our [CSS Gradient Generator](#).

Hey! You found this booklet interesting? Support Converting Colors with the new Membership Option!

The pro membership hides all ads, plus gives you double the colors in the color bucket, and more awesome pro features!

**[Learn more, Memberships starting at \\$2.50/m!](#)**

**Follow me  
on Twitter!**

@ConvertingColor