

Converting Colors

XYZ(43.6313, 39.7854, 34.4038)

Have a look what the booklet for
XYZ(43.6313, 39.7854, 34.4038)
contains.

XYZ(43.5744, 39.7258, 34.2254)	3
<i>Conversions</i>	4
<i>Details</i>	6
<i>Harmonies</i>	12
<i>Previews</i>	24
<i>Color Blindness Simulation</i>	28
<i>CSS Examples</i>	31

Color

**XYZ(43.5744, 39.7258,
34.2254)**

Conversions

Conversions Part 1

Format	Color
Hex	D09D96
RGB	208, 157, 150
RGB Percent	82%, 62%, 59%
CMY	0.1843, 0.3843, 0.4118
CMYK	0.00, 0.25, 0.28, 0.18
HSL	7°, 38%, 70%
HSV	7°, 28%, 82%
XYZ	43.5744, 39.7258, 34.2254
YIQ	171.4510, 32.6430, 8.6350

Conversions

Conversions Part 2

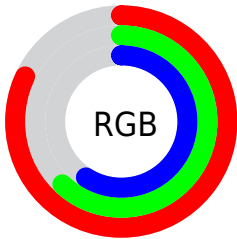
Format	Color
R _Y B	208, 158, 150
Decimal	13671830
CIE Lab	69.27, 17.98, 11.04
CIE LCh	69, 21.097, 31.548
Yxy	39.7258, 0.3708, 0.3380
Android (android.graphics.Color)	4291861910 (0xFFD09D96)
YUV	171.4510, -10.5753, 32.0535
Hunter-Lab	63.0284, 13.1054, 11.9245

Details

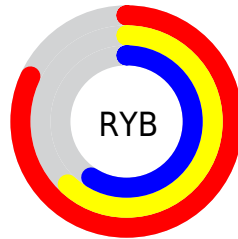
The XYZ color **43.5744, 39.7258, 34.2254** is a light color, and the websafe version is hex **CC9999**. A complement of this color would be **44.8489, 52.8098, 67.5042**, and the grayscale version is **38.9765, 41.0063, 44.6558**.

A 20% lighter version of the original color is **75.6826, 72.7066, 67.1716**, and **20.2526, 17.6794, 14.1494** is the 20% darker color. If you saturate the color by 10%, you get **39.1800, 33.3836, 25.2177**, and if you desaturate by 10%, it is **48.7314, 47.1169, 44.9549**.

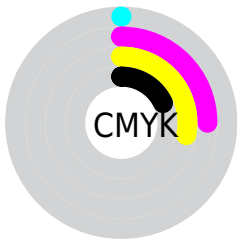
Distribution



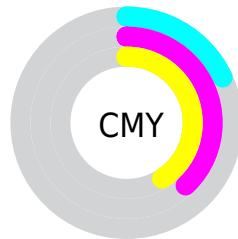
- Red (82%)
- Green (62%)
- Blue (59%)



- Red (82%)
- Yellow (62%)
- Blue (59%)



- Cyan (0%)
- Magenta (25%)
- Yellow (28%)
- Black (18%)





- Cyan (18%)
- Magenta (38%)
- Yellow (41%)

Brightness & Saturation Gradients


These gradients show how the XYZ color 43.5744, 39.7258, 34.2254 changes by changing the brightness by 10 percent. The first figure shows a shift by +10% for each color and the second figure -10%.


Similar to the brightness gradients but the following saturation gradients show a change of the XYZ color 43.5744, 39.7258, 34.2254 by changing the saturation by 10% instead.


 43.5744, 39.7258,
34.2254


 43.5744, 39.7258,
34.2254


351.8503,
344.9665, 335.9357

 30.5325, 27.3248,
22.7881


 79.8273, 74.7458,
67.4219

 20.3932, 17.8173,
14.2333


 103.7690, 98.1336,
90.0182

 12.7911, 10.8189,
8.1425


132.0746,
125.9525, 117.1712

 7.3609, 5.9452,
4.0972

165.1097,
158.5868, 149.2994

 3.7371, 2.8118,
1.6788

203.2394,
196.4209, 186.8214

 1.5545, 1.0343,
0.3461

246.8292,

 0.3625, 0.0000,

239.8394, 230.1558

0.0000

296.2443,
289.2264, 279.7211

■ 0.0000, 0.0000,
0.0000

■ 43.5744, 39.7258,
34.2254

■ 43.5744, 39.7258,
34.2254

■ 39.1800, 33.3836,
25.2177

■ 48.7314, 47.1169,
44.9549

■ 35.5088, 28.0375,
17.8398

■ 54.6816, 55.5956,
57.4869

■ 32.5227, 23.6383,
11.9946

■ 61.4578, 65.2056,
71.8999

■ 30.1785, 20.1305,
7.5740

■ 69.0901, 75.9863,
88.2671

■ 28.4285, 17.4529,
4.4553

■ 77.6069, 87.9754,
106.6577

■ 27.2177, 15.5361,
2.4954

■ 79.8225, 92.1499,
108.1874

■ 26.4757, 14.2977,
1.4907

■ 26.3627, 14.1102,
1.3341

Harmonies

Analogous

The Analogous color harmony consists of three colors that are next to each other on the color wheel.



44.6376, 39.7258, 42.7536



43.5744, 39.7258, 34.2254



40.9412, 39.7258, 28.8619

Triad

The Triadic color harmony groups three colors that are evenly spaced from another and form a triangle on the color wheel.



43.5744, 39.7258, 34.2254



32.3254, 39.7258, 34.9761



37.9341, 39.7258, 64.6659

Complementary

The Complementary color scheme is a pair of colors which are on the opposite of each other on the color wheel.



43.5744, 39.7258, 34.2254



44.8489, 52.8098, 67.5042

Split Complementary

Split-complementary colors differ from the complementary color scheme. The scheme consists of three colors, the original color and two neighbors of the complement color.



34.7445, 39.7258, 61.7783



43.5744, 39.7258, 34.2254



31.6246, 39.7258, 43.7596

Square

The Square scheme is like the rectangle color scheme, but the four colors are evenly spaced on the color wheel.



43.5744, 39.7258, 34.2254



34.4576, 39.7258, 29.2477



32.4840, 39.7258, 53.7468



41.2631, 39.7258, 61.1426

Rectangle

The Rectangle color scheme consists of four colors that form a rectangle on the color wheel.



43.5744, 39.7258, 34.2254



38.7219, 39.7258, 27.3270



32.4840, 39.7258, 53.7468



36.8106, 39.7258, 64.4107

Sweetspot

The Sweet Spot groups the original color and five complimentary colors.



43.5755, 39.7277, 34.2262



86.4802, 87.8402, 90.6915



47.4892, 39.4511, 60.5145



18.1860, 18.3402, 18.7258



0.0000, 0.0000, 0.0000



20.3446, 21.4041, 23.3091

Same Dimension

The Same Dimension uses a secret algorithm to generate beautiful new colors.



43.5755, 39.7277, 34.2262



65.1027, 57.2471, 46.0717



49.0276, 50.6318, 36.0436



11.9221, 12.0349, 12.3066



16.4683, 8.8696, 0.8440



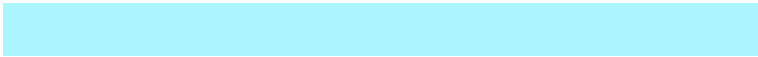
0.9600, 0.5743, 0.0602

Inverse Universe

The Inverse Universe completely reimagines the original color for something new.



44.8489, 52.8098, 67.5042



67.4154, 81.0680, 106.7023



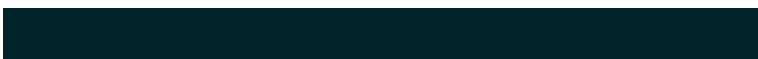
38.7602, 40.6325, 65.4747



12.0315, 13.1532, 15.1483



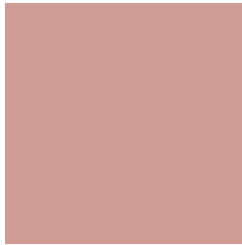
17.6821, 24.0107, 40.8951



1.0238, 1.4128, 2.2983

Previews

White Background



This preview shows how the XYZ color 43.5744, 39.7258, 34.2254 looks on a white background.

Color Contrast Check

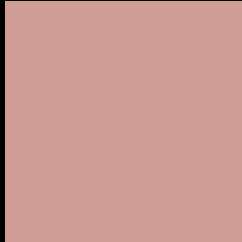
Large Text (above 18pt) WCAG AA × Fail

Any Text WCAG AA × Fail

Large Text (above 18pt) WCAG AAA × Fail

Any Text WCAG AAA × Fail

Black Background



This preview shows how the XYZ color 43.5744, 39.7258, 34.2254 looks on a black background.

Color Contrast Check

Large Text (above 18pt) WCAG AA ✓ Pass

Any Text WCAG AA ✓ Pass

Large Text (above 18pt) WCAG AAA ✓ Pass

Any Text WCAG AAA ✓ Pass

If you want to check with other color combinations, try the [Color Contrast Checker](#).

XYZ 43.5744, 39.7258, 34.2254

Background



This preview shows how black text looks on a background with the XYZ color 43.5744, 39.7258, 34.2254.



This preview shows how white text looks on a background with the XYZ color 43.5744, 39.7258,

34.2254.

Color Blindness Simulation

Color vision deficiency is a very complex topic, and I could not describe the different causes any better than Wikipedia does, so if you want to learn more, you should check out their [article about color blindness](#).

Dichromacy



Original Color

43.5744, 39.7258, 34.2254

Protanopia

38.0932, 40.0063, 37.1668

Deuteranopia

40.5143, 39.7018, 33.9616



Tritanopia

45.1826, 39.8975, 41.3960

Trichromacy



Original Color

43.5744, 39.7258, 34.2254

Protanomaly

40.0269, 39.9347, 36.1704

Deuteranomaly

41.4584, 39.6654, 33.9049

Tritanomaly

44.5281, 39.8703, 38.6066

Monochromacy



Original Color

43.5744, 39.7258, 34.2254

Achromatopsia

38.7082, 40.7240, 44.3485

Achromatomaly

40.0142, 40.1071, 40.2828

CSS Examples

Text

The CSS property to change the color of the text to XYZ 43.5744, 39.7258, 34.2254 is called "color". The color property can be set on classes, ids or directly on the HTML element.

This example shows how text in the color `rgb(208, 157, 150)` looks like.

```
.text, #text, p{  
    color:rgb(208, 157, 150)  
}
```

If you want to add a text shadow in that color use the text-shadow property, you can generate a text shadow directly with our [CSS Text Shadow Generator](#).

Here you see how black text with a 4 pixel rgb(208, 157, 150) colored shadow looks like.

```
.shadow{ text-shadow: 4px 4px 2px rgb(208, 157, 150) }
```

Border

The CSS property to change the border of an element to XYZ 43.5744, 39.7258, 34.2254 is called "border". The border property can be set on classes, ids or directly on the HTML element.

This example shows the color as border, it can be applied via the CSS property "border" or "border-color".

```
.border, #border, table{ border:4px solid rgb(208, 157, 150) }
```


If only the border color should be changed use the property `border-color`.

```
.border{ border-color:rgb(208, 157, 150) }
```

If you want to add a box shadow in that color use:

Here you see how a box with a 4 pixel `rgb(208, 157, 150)` colored shadow looks like.

```
.boxshadow{ -moz-box-shadow:4px 4px 4px  
4px rgb(208, 157, 150); -webkit-box-  
shadow:4px 4px 4px 4px rgb(208, 157, 150);  
box-shadow:4px 4px 4px 4px rgb(208, 157,  
150) }
```

Background

The CSS property to change the background color of an element to XYZ 43.5744, 39.7258, 34.2254 is called "background". The background property can be set on classes, ids or directly on the HTML element.

```
.background, #background, body{  
background: rgb(208, 157, 150) }
```

If only the background color should be changed can be used:

```
.background{ background-color: rgb(208,  
157, 150) }
```

This example shows the color as background, it is applied via the CSS property "background".

To optimize and compress your CSS code, you can use our [online CSS compressor and optimizer](#) based on csstidy. If you want to create a linear or radial gradient as background or border, check our [CSS Gradient Generator](#).

Hey! You found this booklet interesting? Support Converting Colors with the new Membership Option!

The pro membership hides all ads, plus gives you double the colors in the color bucket, and more awesome pro features!

[Learn more, Memberships starting at \\$2.50/m!](#)

**Follow me
on Twitter!**

@ConvertingColor