

Converting Colors

XYZ(43.7276, 42.2609, 41.9289)

Have a look what the booklet for
XYZ(43.7276, 42.2609, 41.9289)
contains.

XYZ(43.7276, 42.2609, 41.9289)	3
<i>Conversions</i>	4
<i>Details</i>	6
<i>Harmonies</i>	12
<i>Previews</i>	24
<i>Color Blindness Simulation</i>	28
<i>CSS Examples</i>	31

Color

**XYZ(43.7276, 42.2609,
41.9289)**

Conversions

Conversions Part 1

Format	Color
Hex	C5A7A6
RGB	197, 167, 166
RGB Percent	77%, 65%, 65%
CMY	0.2274, 0.3451, 0.3490
CMYK	0.00, 0.15, 0.16, 0.23
HSL	2°, 21%, 71%
HSV	2°, 16%, 77%
XYZ	43.7276, 42.2609, 41.9289
YIQ	175.8560, 18.2010, 6.0490

Conversions

Conversions Part 2

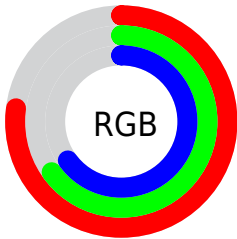
Format	Color
R _Y B	197, 167, 166
Decimal	12953510
CIE Lab	71.05, 10.77, 4.58
CIE LCh	71, 11.706, 23.037
Yxy	42.2609, 0.3418, 0.3304
Android (android.graphics.Color)	4291143590 (0xFFC5A7A6)
YUV	175.8560, -4.8590, 18.5433
Hunter-Lab	65.0084, 6.3026, 7.2652

Details

The XYZ color **43.7276, 42.2609, 41.9289** is a light color, and the websafe version is hex **CC9999**. A complement of this color would be **45.5436, 51.6170, 60.3864**, and the grayscale version is **41.2106, 43.3568, 47.2155**.

A 20% lighter version of the original color is **80.0455, 78.5338, 79.3463**, and **20.4957, 19.3160, 18.5677** is the 20% darker color. If you saturate the color by 10%, you get **38.8188, 35.1169, 32.0494**, and if you desaturate by 10%, it is **49.4304, 50.5490, 53.4398**.

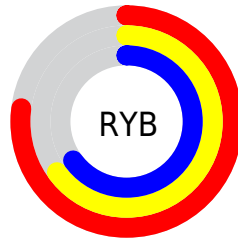
Distribution



Red (77%)

Green (65%)

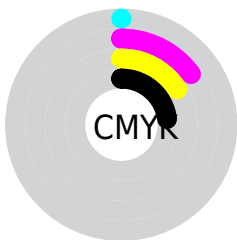
Blue (65%)



Red (77%)

Yellow (65%)

Blue (65%)

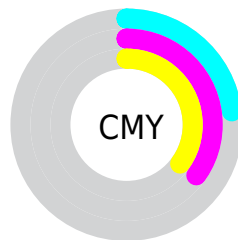


Cyan (0%)

Magenta (15%)

Yellow (16%)

Black (23%)



Cyan (23%)


Magenta (35%)

Yellow (35%)

Brightness & Saturation Gradients


These gradients show how the XYZ color 43.7276, 42.2609, 41.9289 changes by changing the brightness by 10 percent. The first figure shows a shift by +10% for each color and the second figure -10%.


Similar to the brightness gradients but the following saturation gradients show a change of the XYZ color 43.7276, 42.2609, 41.9289 by changing the saturation by 10% instead.


 43.7276, 42.2609,
41.9289


 43.7276, 42.2609,
41.9289


352.4665,
355.5633, 369.9791

 30.6534, 29.3056,
28.7205


 80.0566, 78.5943,
79.3609

 20.4856, 19.3122,
18.6257


 104.0421,
102.7413, 104.4216

 12.8588, 11.8960,
11.2261

132.3954,
131.3876, 134.2701

 7.4077, 6.6729,
6.1030

165.4819,
164.9177, 169.3250

 3.7670, 3.2584,
2.8380

203.6669,
203.7159, 210.0048

 1.5712, 1.2681,
1.0125

247.3157,

 0.3735, 0.1163,

248.1666, 256.7281

0.0000

296.7938,
298.6543, 309.9133

0.0000, 0.0000,
0.0000

43.7276, 42.2609,
41.9289

43.7276, 42.2609,
41.9289

38.8188, 35.1169,
32.0494

49.4304, 50.5490,
53.4398

34.6654, 29.0613,
23.7250

55.9564, 60.0222,
66.6482

31.2310, 24.0424,
16.8772

63.3378, 70.7267,
81.6201

28.4749, 20.0022,
11.4200

71.6040, 82.7043,
98.4170

26.3519, 16.8768,
7.2580

76.8361, 90.6104,
108.0476

■ 24.8119, 14.5948,
4.2842

■ 23.7967, 13.0743,
2.3743

■ 23.2361, 12.2167,
1.3746

■ 23.0953, 12.0088,
1.1007

Harmonies

Analogous

The Analogous color harmony consists of three colors that are next to each other on the color wheel.



44.0162, 42.2609, 47.3325



43.7276, 42.2609, 41.9289



42.4709, 42.2609, 37.9371

Triad

The Triadic color harmony groups three colors that are evenly spaced from another and form a triangle on the color wheel.



43.7276, 42.2609, 41.9289



37.2381, 42.2609, 39.8398



39.7137, 42.2609, 57.5510

Complementary

The Complementary color scheme is a pair of colors which are on the opposite of each other on the color wheel.



43.7276, 42.2609, 41.9289



45.5436, 51.6170, 60.3864

Split Complementary

Split-complementary colors differ from the complementary color scheme. The scheme consists of three colors, the original color and two neighbors of the complement color.



37.9493, 42.2609, 55.1651



43.7276, 42.2609, 41.9289



36.5504, 42.2609, 44.7221

Square

The Square scheme is like the rectangle color scheme, but the four colors are evenly spaced on the color wheel.



43.7276, 42.2609, 41.9289



38.7144, 42.2609, 36.8010



36.8065, 42.2609, 50.3582



41.6569, 42.2609, 56.6512

Rectangle

The Rectangle color scheme consists of four colors that form a rectangle on the color wheel.



43.7276, 42.2609, 41.9289



41.2745, 42.2609, 36.4658



36.8065, 42.2609, 50.3582



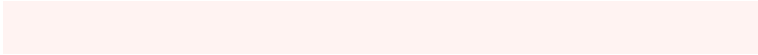
39.0809, 42.2609, 57.1006

Sweetspot

The Sweet Spot groups the original color and five complimentary colors.



43.7288, 42.2628, 41.9298



89.2543, 91.5853, 97.1749



46.6816, 43.1509, 58.3824



18.9363, 19.3594, 20.4603



0.0000, 0.0000, 0.0000



20.3446, 21.4041, 23.3091

Same Dimension

The Same Dimension uses a secret algorithm to generate beautiful new colors.



43.7288, 42.2628, 41.9298



75.0323, 70.9125, 68.4763



46.6407, 48.0867, 42.9004



10.6609, 10.6910, 11.0644



15.2026, 7.9223, 0.7279



0.7297, 0.3948, 0.0377

Inverse Universe

The Inverse Universe completely reimagines the original color for something new.



45.5436, 51.6170, 60.3864



78.9183, 90.9441, 108.0023



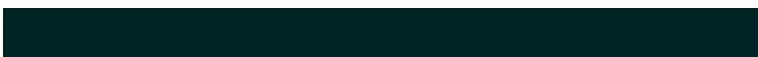
42.3250, 45.1797, 59.3135



10.9162, 12.0064, 13.6596



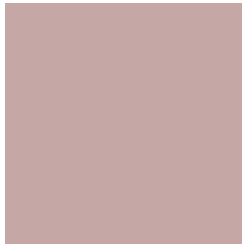
18.8415, 27.0770, 38.9777



0.9016, 1.3010, 1.8487

Previews

White Background



This preview shows how the XYZ color 43.7276, 42.2609, 41.9289 looks on a white background.

Color Contrast Check

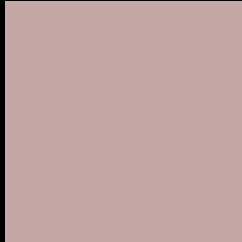
Large Text (above 18pt) WCAG AA × Fail

Any Text WCAG AA × Fail

Large Text (above 18pt) WCAG AAA × Fail

Any Text WCAG AAA × Fail

Black Background



This preview shows how the XYZ color 43.7276, 42.2609, 41.9289 looks on a black background.

Color Contrast Check

Large Text (above 18pt) WCAG AA ✓ Pass

Any Text WCAG AA ✓ Pass

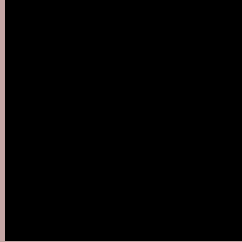
Large Text (above 18pt) WCAG AAA ✓ Pass

Any Text WCAG AAA ✓ Pass

If you want to check with other color combinations, try the [Color Contrast Checker](#).

XYZ 43.7276, 42.2609, 41.9289

Background



This preview shows how black text looks on a background with the XYZ color 43.7276, 42.2609, 41.9289.



This preview shows how white text looks on a background with the XYZ color 43.7276, 42.2609, 41.9289.

Color Blindness Simulation

Color vision deficiency is a very complex topic, and I could not describe the different causes any better than Wikipedia does, so if you want to learn more, you should check out their [article about color blindness](#).

Dichromacy



Original Color

43.7276, 42.2609, 41.9289

Protanopia

40.4651, 42.2167, 43.5520

Deuteranopia

43.1337, 42.2278, 41.9538



Tritanopia

45.0442, 42.2667, 47.9037

Trichromacy



Original Color

43.7276, 42.2609, 41.9289

Protanomaly

41.6384, 42.2673, 43.0096

Deuteranomaly

43.3912, 42.3605, 41.9658

Tritanomaly

44.5649, 42.3342, 45.8669

Monochromacy



Original Color

43.7276, 42.2609, 41.9289

Achromatopsia

41.2663, 43.4154, 47.2793

Achromatomaly

42.1571, 43.0560, 45.1185

CSS Examples

Text

The CSS property to change the color of the text to XYZ 43.7276, 42.2609, 41.9289 is called "color". The color property can be set on classes, ids or directly on the HTML element.

This example shows how text in the color `rgb(197, 167, 166)` looks like.

```
.text, #text, p{  
    color:rgb(197, 167, 166)  
}
```

If you want to add a text shadow in that color use the text-shadow property, you can generate a text shadow directly with our [CSS Text Shadow Generator](#).

Here you see how black text with a 4 pixel rgb(197, 167, 166) colored shadow looks like.

```
.shadow{ text-shadow: 4px 4px 2px rgb(197, 167, 166) }
```

Border

The CSS property to change the border of an element to XYZ 43.7276, 42.2609, 41.9289 is called "border". The border property can be set on classes, ids or directly on the HTML element.

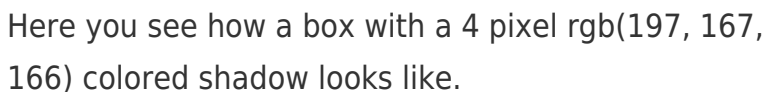
This example shows the color as border, it can be applied via the CSS property "border" or "border-color".

```
.border, #border, table{ border:4px solid rgb(197, 167, 166) }
```


If only the border color should be changed use the property `border-color`.

```
.border{ border-color:rgb(197, 167, 166) }
```

If you want to add a box shadow in that color use:



Here you see how a box with a 4 pixel `rgb(197, 167, 166)` colored shadow looks like.

```
.boxshadow{ -moz-box-shadow:4px 4px 4px  
4px rgb(197, 167, 166); -webkit-box-  
shadow:4px 4px 4px 4px rgb(197, 167, 166);  
box-shadow:4px 4px 4px 4px rgb(197, 167,  
166) }
```

Background

The CSS property to change the background color of an element to XYZ 43.7276, 42.2609, 41.9289 is called "background". The background property can be set on classes, ids or directly on the HTML element.

```
.background, #background, body{  
background: rgb(197, 167, 166) }
```

If only the background color should be changed can be used:

```
.background{ background-color: rgb(197,  
167, 166) }
```

This example shows the color as background, it is applied via the CSS property "background".

To optimize and compress your CSS code, you can use our [online CSS compressor and optimizer](#) based on csstidy. If you want to create a linear or radial gradient as background or border, check our [CSS Gradient Generator](#).

Hey! You found this booklet interesting? Support Converting Colors with the new Membership Option!

The pro membership hides all ads, plus gives you double the colors in the color bucket, and more awesome pro features!

[Learn more, Memberships starting at \\$2.50/m!](#)

**Follow me
on Twitter!**

@ConvertingColor