

# Converting Colors

XYZ(43.7342, 38.5900, 33.1764)

Have a look what the booklet for  
XYZ(43.7342, 38.5900, 33.1764)  
contains.

<b>XYZ(43.7249, 38.5916, 33.1614)</b> .....	3
<b><i>Conversions</i></b> .....	4
<b><i>Details</i></b> .....	6
<b><i>Harmonies</i></b> .....	12
<b><i>Previews</i></b> .....	24
<b><i>Color Blindness Simulation</i></b> .....	28
<b><i>CSS Examples</i></b> .....	31

# Color

**XYZ(43.7249, 38.5916,  
33.1614)**

# Conversions

## Conversions Part 1

<b>Format</b>	<b>Color</b>
Hex	D49894
RGB	212, 152, 148
RGB Percent	83%, 60%, 58%
CMY	0.1686, 0.4039, 0.4196
CMYK	0.00, 0.28, 0.30, 0.17
HSL	4°, 43%, 71%
HSV	4°, 30%, 83%
XYZ	43.7249, 38.5916, 33.1614
YIQ	169.4840, 37.0440, 11.4760

# Conversions

## Conversions Part 2

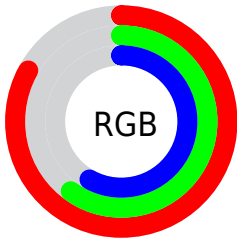
<b>Format</b>	<b>Color</b>
R <sub>Y</sub> B	212, 152, 148
Decimal	13932692
CIE Lab	68.45, 21.95, 11.05
CIE LCh	68, 24.578, 26.716
Yxy	38.5916, 0.3786, 0.3342
Android (android.graphics.Color)	4292122772 (0xFFD49894)
YUV	169.4840, -10.5916, 37.2865
Hunter-Lab	62.1221, 16.9242, 11.8359

# Details

The XYZ color **43.7249, 38.5916, 33.1614** is a light color, and the websafe version is hex **CC9999**. A complement of this color would be **46.6516, 56.1594, 70.6685**, and the grayscale version is **37.9908, 39.9692, 43.5265**.

A 20% lighter version of the original color is **74.2135, 70.1499, 65.5059**, and **20.5217, 17.2383, 13.5550** is the 20% darker color. If you saturate the color by 10%, you get **39.2384, 32.0625, 24.1314**, and if you desaturate by 10%, it is **49.0613, 46.3282, 43.9917**.

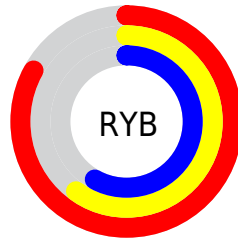
# Distribution



Red (83%)

Green (60%)

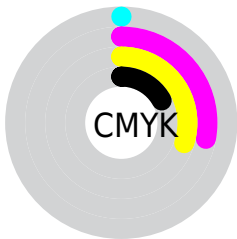
Blue (58%)



Red (83%)

Yellow (60%)

Blue (58%)

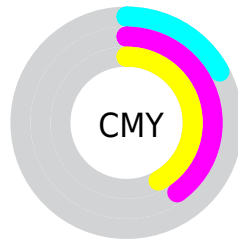


Cyan (0%)

Magenta (28%)

Yellow (30%)

Black (17%)



Cyan (17%)

Magenta (40%)

Yellow (42%)

# Brightness & Saturation Gradients

These gradients show how the XYZ color 43.7249, 38.5916, 33.1614 changes by changing the brightness by 10 percent. The first figure shows a shift by +10% for each color and the second figure -10%.

Similar to the brightness gradients but the following saturation gradients show a change of the XYZ color 43.7249, 38.5916, 33.1614 by changing the saturation by 10% instead.



■ 43.7249, 38.5916,  
33.1614

■ 43.7249, 38.5916,  
33.1614

352.4557,  
340.1510, 331.0307

■ 30.6513, 26.4422,  
21.9780

■ 80.0525, 73.0140,  
65.7463

■ 20.4840, 17.1547,  
13.6426

■ 104.0373, 96.0558,  
87.9850

■ 12.8576, 10.3449,  
7.7366

132.3897,  
123.4971, 114.7457

■ 7.4069, 5.6282,  
3.8415

165.4753,  
155.7224, 146.4472

■ 3.7664, 2.6204,  
1.5388

203.6593,  
193.1160, 183.5079

■ 1.5709, 0.9369,  
0.2466

247.3072,

■ 0.3733, 0.0000,

236.0624, 226.3463

0.0000

296.7842,  
284.9459, 275.3811

■ 0.0000, 0.0000,  
0.0000

■ 43.7249, 38.5916,  
33.1614

■ 43.7249, 38.5916,  
33.1614

■ 39.2384, 32.0625,  
24.1314

■ 49.0613, 46.3282,  
43.9917

■ 35.5549, 26.6748,  
16.8020

■ 55.2850, 55.3231,  
56.7101

■ 32.6280, 22.3645,  
11.0672

■ 62.4350, 65.6308,  
71.4013

■ 30.4048, 19.0592,  
6.8085

■ 70.5471, 77.3010,  
88.1445

■ 28.8260, 16.6775,  
3.8904

■ 79.6551, 90.3810,  
107.0141

■ 27.8223, 15.1251,  
2.1529

■ 80.9614, 92.7371,  
108.2407

■ 27.2988, 14.2917,  
1.3198

# Harmonies

## Analogous

The Analogous color harmony consists of three colors that are next to each other on the color wheel.



44.6088, 38.5916, 43.2504



43.7249, 38.5916, 33.1614



40.9104, 38.5916, 26.6241

# Triad

The Triadic color harmony groups three colors that are evenly spaced from another and form a triangle on the color wheel.



43.7249, 38.5916, 33.1614



30.8133, 38.5916, 31.3909



36.2562, 38.5916, 67.0434

# Complementary

The Complementary color scheme is a pair of colors which are on the opposite of each other on the color wheel.



43.7249, 38.5916, 33.1614



46.6516, 56.1594, 70.6685

# Split Complementary

Split-complementary colors differ from the complementary color scheme. The scheme consists of three colors, the original color and two neighbors of the complement color.



32.7521, 38.5916, 62.4350



43.7249, 38.5916, 33.1614



29.7515, 38.5916, 40.8125

# Square

The Square scheme is like the rectangle color scheme, but the four colors are evenly spaced on the color wheel.



43.7249, 38.5916, 33.1614



33.4404, 38.5916, 25.7350



30.4359, 38.5916, 52.3298



40.1227, 38.5916, 64.0357



# Rectangle

The Rectangle color scheme consists of four colors that form a rectangle on the color wheel.



43.7249, 38.5916, 33.1614



38.4139, 38.5916, 24.5268



30.4359, 38.5916, 52.3298



34.9993, 38.5916, 66.3164

# Sweetspot

The Sweet Spot groups the original color and five complimentary colors.



43.7259, 38.5934, 33.1622



85.0892, 85.6423, 88.4271



49.2254, 39.7709, 65.2741



17.8917, 17.8678, 18.2692



0.0000, 0.0000, 0.0000



20.3446, 21.4041, 23.3091



# Same Dimension

The Same Dimension uses a secret algorithm to generate beautiful new colors.



43.7259, 38.5934, 33.1622



62.0462, 52.2664, 41.5626



49.4717, 50.0851, 35.0774



12.4850, 12.5442, 12.9240



16.8781, 8.8734, 0.8232



1.0404, 0.5801, 0.0571



# Inverse Universe

The Inverse Universe completely reimagines the original color for something new.



46.6516, 56.1594, 70.6685



67.1503, 82.9378, 107.0771



39.7795, 42.4151, 68.3778



12.7226, 13.9686, 15.9632



19.9351, 28.1320, 42.8325

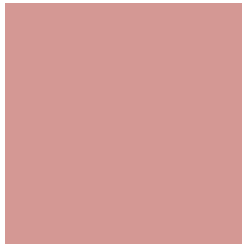


1.2230, 1.7379, 2.5903



# Previews

## White Background



This preview shows how the XYZ color 43.7249, 38.5916, 33.1614 looks on a white background.

## Color Contrast Check

Large Text (above 18pt) WCAG AA × Fail

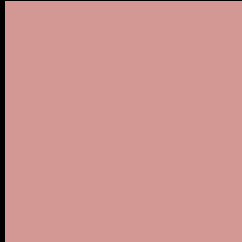
Any Text WCAG AA × Fail

Large Text (above 18pt) WCAG AAA × Fail

Any Text WCAG AAA × Fail



# Black Background



This preview shows how the XYZ color 43.7249, 38.5916, 33.1614 looks on a black background.

## Color Contrast Check

Large Text (above 18pt) WCAG AA ✓ Pass

Any Text WCAG AA ✓ Pass

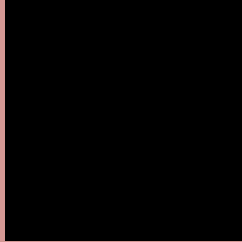
Large Text (above 18pt) WCAG AAA ✓ Pass

Any Text WCAG AAA ✓ Pass

If you want to check with other color combinations, try the [Color Contrast Checker](#).

**XYZ 43.7249, 38.5916, 33.1614**

## **Background**



This preview shows how black text looks on a background with the XYZ color 43.7249, 38.5916, 33.1614.



This preview shows how white text looks on a background with the XYZ color 43.7249, 38.5916,



# Color Blindness Simulation

Color vision deficiency is a very complex topic, and I could not describe the different causes any better than Wikipedia does, so if you want to learn more, you should check out their [article about color blindness](#).

## Dichromacy



### Original Color

43.7249, 38.5916, 33.1614

### Protanopia

37.0530, 38.9220, 37.0123

### Deuteranopia

39.4190, 38.6414, 32.5751



## Tritanopia

44.7799, 38.5320, 38.7955

# Trichromacy



## Original Color

43.7249, 38.5916, 33.1614

## Protanomaly

39.1636, 38.7054, 35.5437

## Deuteranomaly

41.0465, 38.7024, 32.9107

## Tritanomaly

44.5079, 38.6797, 36.5726

# Monochromacy



## Original Color

43.7249, 38.5916, 33.1614

## Achromatopsia

37.7116, 39.6755, 43.2066

## Achromatomaly

39.5378, 39.0819, 39.1779

# CSS Examples

## Text

The CSS property to change the color of the text to XYZ 43.7249, 38.5916, 33.1614 is called "color". The color property can be set on classes, ids or directly on the HTML element.

This example shows how text in the color `rgb(212, 152, 148)` looks like.

```
.text, #text, p{  
    color:rgb(212, 152, 148)  
}
```

If you want to add a text shadow in that color use the text-shadow property, you can generate a text shadow directly with our [CSS Text Shadow Generator](#).

Here you see how black text with a 4 pixel rgb(212, 152, 148) colored shadow looks like.

```
.shadow{ text-shadow: 4px 4px 2px rgb(212, 152, 148) }
```

## Border

The CSS property to change the border of an element to XYZ 43.7249, 38.5916, 33.1614 is called "border". The border property can be set on classes, ids or directly on the HTML element.

This example shows the color as border, it can be applied via the CSS property "border" or "border-color".

```
.border, #border, table{ border:4px solid rgb(212, 152, 148) }
```



If only the border color should be changed use the property `border-color`.

```
.border{ border-color:rgb(212, 152, 148) }
```

If you want to add a box shadow in that color use:

Here you see how a box with a 4 pixel `rgb(212, 152, 148)` colored shadow looks like.

```
.boxshadow{ -moz-box-shadow:4px 4px 4px  
4px rgb(212, 152, 148); -webkit-box-  
shadow:4px 4px 4px 4px rgb(212, 152, 148);  
box-shadow:4px 4px 4px 4px rgb(212, 152,  
148) }
```

# Background

The CSS property to change the background color of an element to XYZ 43.7249, 38.5916, 33.1614 is called "background". The background property can be set on classes, ids or directly on the HTML element.

```
.background, #background, body{  
background: rgb(212, 152, 148) }
```

If only the background color should be changed can be used:

```
.background{ background-color: rgb(212,  
152, 148) }
```

This example shows the color as background, it is applied via the CSS property "background".

To optimize and compress your CSS code, you can use our [online CSS compressor and optimizer](#) based on csstidy. If you want to create a linear or radial gradient as background or border, check our [CSS Gradient Generator](#).

Hey! You found this booklet interesting? Support Converting Colors with the new Membership Option!

The pro membership hides all ads, plus gives you double the colors in the color bucket, and more awesome pro features!

**[Learn more, Memberships starting at \\$2.50/m!](#)**

**Follow me  
on Twitter!**

@ConvertingColor