

Converting Colors

XYZ(43.7629, 44.0743, 44.0034)

Have a look what the booklet for
XYZ(43.7629, 44.0743, 44.0034)
contains.

XYZ(43.8776, 44.2507, 44.2589)	3
<i>Conversions</i>	4
<i>Details</i>	6
<i>Harmonies</i>	12
<i>Previews</i>	24
<i>Color Blindness Simulation</i>	28
<i>CSS Examples</i>	31

Color

**XYZ(43.8776, 44.2507,
44.2589)**

Conversions

Conversions Part 1

Format	Color
Hex	BFAEAA
RGB	191, 174, 170
RGB Percent	75%, 68%, 67%
CMY	0.2510, 0.3176, 0.3333
CMYK	0.00, 0.09, 0.11, 0.25
HSL	11°, 14%, 71%
HSV	11°, 11%, 75%
XYZ	43.8776, 44.2507, 44.2589
YIQ	178.6270, 11.4160, 2.3600

Conversions

Conversions Part 2

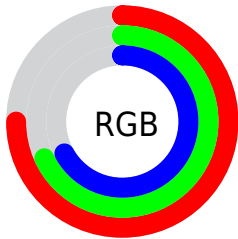
Format	Color
RYB	191, 175, 170
Decimal	12562090
CIELab	72.40, 5.41, 4.25
CIELCh	72, 6.885, 38.153
Yxy	44.2507, 0.3314, 0.3343
Android (android.graphics.Color)	4290752170 (0xFFBFAEAA)
YUV	178.6270, -4.2531, 10.8511
Hunter-Lab	66.5212, 1.3271, 7.1171

Details

The XYZ color **43.8776, 44.2507, 44.2589** is a light color, and the websafe version is hex **999999**. A complement of this color would be **43.7518, 47.8475, 56.2202**, and the grayscale version is **42.6679, 44.8900, 48.8852**.

A 20% lighter version of the original color is **79.9677, 81.2490, 82.7020**, and **20.5461, 20.5454, 20.0223** is the 20% darker color. If you saturate the color by 10%, you get **39.3841, 37.9479, 34.4850**, and if you desaturate by 10%, it is **48.9799, 51.3500, 55.5319**.

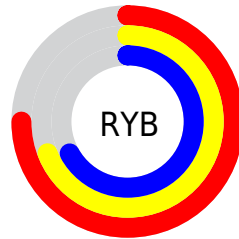
Distribution



Red (75%)

Green (68%)

Blue (67%)



Red (75%)

Yellow (69%)

Blue (67%)

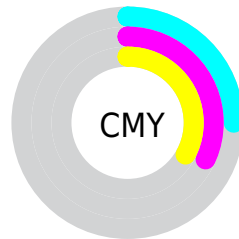


Cyan (0%)

Magenta (9%)

Yellow (11%)

Black (25%)



Cyan (25%)

Magenta (32%)

Yellow (33%)

Brightness & Saturation Gradients

These gradients show how the XYZ color 43.8776, 44.2507, 44.2589 changes by changing the brightness by 10 percent. The first figure shows a shift by +10% for each color and the second figure -10%.

Similar to the brightness gradients but the following saturation gradients show a change of the XYZ color 43.8776, 44.2507, 44.2589 by changing the saturation by 10% instead.

■ 43.8776, 44.2507,
44.2589

■ 43.8776, 44.2507,
44.2589

353.0692,
363.7303, 379.8360

■ 30.7718, 30.8676,
30.5354

■ 80.2810, 81.5949,
82.9138

■ 20.5761, 20.4981,
19.9898

104.3093,
106.3247, 108.6823

■ 12.9252, 12.7576,
12.2037

132.7092,
135.6057, 139.3029

■ 7.4537, 7.2619,
6.7583

165.8460,
169.8221, 175.1941

■ 3.7963, 3.6264,
3.2353

204.0850,
209.3584, 216.7745

■ 1.5875, 1.4669,
1.2160

247.7917,

■ 0.3843, 0.2652,

254.5989, 264.4625

0.0000

297.3313,
305.9281, 318.6769

0.0000, 0.0000,
0.0000

43.8776, 44.2507,
44.2589

43.8776, 44.2507,
44.2589

39.3841, 37.9479,
34.4850

48.9799, 51.3500,
55.5319

35.4728, 32.4079,
26.1443

54.7089, 59.2661,
68.3606

32.1206, 27.6033,
19.1697

61.0864, 68.0262,
82.8023

29.3014, 23.5030,
13.4882

68.1320, 77.6542,
98.9102

26.9869, 20.0734,
9.0196

74.1270, 87.4782,
107.5858

■ 25.1464, 17.2783,
5.6747

■ 75.2961, 89.8165,
107.9755

■ 23.7452, 15.0778,
3.3520

■ 22.7437, 13.4273,
1.9316

■ 22.1294, 12.3632,
1.2200

Harmonies

Analogous

The Analogous color harmony consists of three colors that are next to each other on the color wheel.



44.3567, 44.2507, 47.2613



43.8776, 44.2507, 44.2589



42.9132, 44.2507, 42.3709

Triad

The Triadic color harmony groups three colors that are evenly spaced from another and form a triangle on the color wheel.



43.8776, 44.2507, 44.2589



39.9779, 44.2507, 45.7920



42.3832, 44.2507, 54.9391

Complementary

The Complementary color scheme is a pair of colors which are on the opposite of each other on the color wheel.



43.8776, 44.2507, 44.2589



43.7518, 47.8475, 56.2202

Split Complementary

Split-complementary colors differ from the complementary color scheme. The scheme consists of three colors, the original color and two neighbors of the complement color.



41.2161, 44.2507, 54.5004



43.8776, 44.2507, 44.2589



39.8420, 44.2507, 49.1135

Square

The Square scheme is like the rectangle color scheme, but the four colors are evenly spaced on the color wheel.



43.8776, 44.2507, 44.2589



40.6660, 44.2507, 43.2266



40.2913, 44.2507, 52.3293



43.4833, 44.2507, 53.5012

Rectangle

The Rectangle color scheme consists of four colors that form a rectangle on the color wheel.



43.8776, 44.2507, 44.2589



42.1325, 44.2507, 41.9449



40.2913, 44.2507, 52.3293



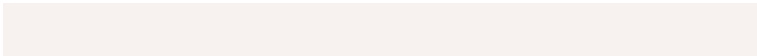
41.9855, 44.2507, 55.0075

Sweetspot

The Sweet Spot groups the original color and five complimentary colors.



43.8788, 44.2527, 44.2598



85.7563, 89.2394, 95.0883



44.8469, 43.4208, 53.1158



18.6632, 19.3627, 20.5078



92.9021, 97.7402, 106.4391



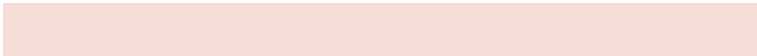
19.4759, 20.4902, 22.3138

Same Dimension

The Same Dimension uses a secret algorithm to generate beautiful new colors.



43.8788, 44.2527, 44.2598



76.7142, 76.6385, 75.1705



45.9554, 48.4058, 44.9520



9.6734, 9.8229, 9.9628



14.5880, 8.2148, 0.8167



0.6164, 0.4118, 0.0470

Inverse Universe

The Inverse Universe completely reimagines the original color for something new.



43.7518, 47.8475, 56.2202



76.4446, 84.2546, 100.5128



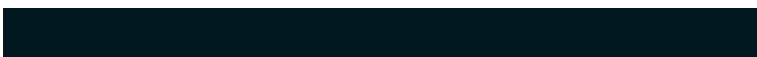
41.6353, 43.6145, 55.5147



9.6498, 10.4919, 12.1888



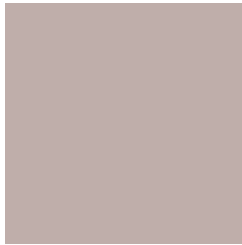
13.8943, 17.9003, 35.1157



0.5847, 0.7822, 1.3890

Previews

White Background



This preview shows how the XYZ color 43.8776, 44.2507, 44.2589 looks on a white background.

Color Contrast Check

Large Text (above 18pt) WCAG AA × Fail

Any Text WCAG AA × Fail

Large Text (above 18pt) WCAG AAA × Fail

Any Text WCAG AAA × Fail

Black Background



This preview shows how the XYZ color 43.8776, 44.2507, 44.2589 looks on a black background.

Color Contrast Check

Large Text (above 18pt) WCAG AA ✓ Pass

Any Text WCAG AA ✓ Pass

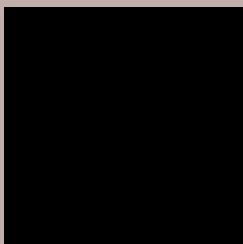
Large Text (above 18pt) WCAG AAA ✓ Pass

Any Text WCAG AAA ✓ Pass

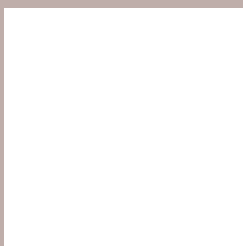
If you want to check with other color combinations, try the [Color Contrast Checker](#).

XYZ 43.8776, 44.2507, 44.2589

Background



This preview shows how black text looks on a background with the XYZ color 43.8776, 44.2507, 44.2589.



This preview shows how white text looks on a background with the XYZ color 43.8776, 44.2507,

Color Blindness Simulation

Color vision deficiency is a very complex topic, and I could not describe the different causes any better than Wikipedia does, so if you want to learn more, you should check out their [article about color blindness](#).

Dichromacy



Original Color

43.8776, 44.2507, 44.2589

Protanopia

42.4599, 44.3679, 45.3557

Deuteranopia

45.0342, 44.2776, 44.2031



Tritanopia

45.5018, 44.3453, 52.0602

Trichromacy



Original Color

43.8776, 44.2507, 44.2589

Protanomaly

42.8836, 44.3052, 44.8196

Deuteranomaly

44.7049, 44.3915, 44.2424

Tritanomaly

44.9200, 44.3889, 49.3804

Monochromacy



Original Color

43.8776, 44.2507, 44.2589

Achromatopsia

42.8472, 45.0786, 49.0906

Achromatomaly

43.0871, 44.6461, 47.4209

CSS Examples

Text

The CSS property to change the color of the text to XYZ 43.8776, 44.2507, 44.2589 is called "color". The color property can be set on classes, ids or directly on the HTML element.

This example shows how text in the color `rgb(191, 174, 170)` looks like.

```
.text, #text, p{  
    color:rgb(191, 174, 170)  
}
```

If you want to add a text shadow in that color use the text-shadow property, you can generate a text shadow directly with our [CSS Text Shadow Generator](#).

Here you see how black text with a 4 pixel rgb(191, 174, 170) colored shadow looks like.

```
.shadow{ text-shadow: 4px 4px 2px rgb(191, 174, 170) }
```

Border

The CSS property to change the border of an element to XYZ 43.8776, 44.2507, 44.2589 is called "border". The border property can be set on classes, ids or directly on the HTML element.

This example shows the color as border, it can be applied via the CSS property "border" or "border-color".

```
.border, #border, table{ border:4px solid rgb(191, 174, 170) }
```


If only the border color should be changed use the property `border-color`.

```
.border{ border-color:rgb(191, 174, 170) }
```

If you want to add a box shadow in that color use:

Here you see how a box with a 4 pixel `rgb(191, 174, 170)` colored shadow looks like.

```
.boxshadow{ -moz-box-shadow:4px 4px 4px  
4px rgb(191, 174, 170); -webkit-box-  
shadow:4px 4px 4px 4px rgb(191, 174, 170);  
box-shadow:4px 4px 4px 4px rgb(191, 174,  
170) }
```

Background

The CSS property to change the background color of an element to XYZ 43.8776, 44.2507, 44.2589 is called "background". The background property can be set on classes, ids or directly on the HTML element.

```
.background, #background, body{  
background: rgb(191, 174, 170) }
```

If only the background color should be changed can be used:

```
.background{ background-color: rgb(191,  
174, 170) }
```

This example shows the color as background, it is applied via the CSS property "background".

To optimize and compress your CSS code, you can use our [online CSS compressor and optimizer](#) based on csstidy. If you want to create a linear or radial gradient as background or border, check our [CSS Gradient Generator](#).

Hey! You found this booklet interesting? Support Converting Colors with the new Membership Option!

The pro membership hides all ads, plus gives you double the colors in the color bucket, and more awesome pro features!

[Learn more, Memberships starting at \\$2.50/m!](#)

**Follow me
on Twitter!**

@ConvertingColor