

Converting Colors

XYZ(43.7634, 44.0708, 45.8352)

Have a look what the booklet for
XYZ(43.7634, 44.0708, 45.8352)
contains.

XYZ(43.9141, 44.2364, 45.7591)	3
<i>Conversions</i>	4
<i>Details</i>	6
<i>Harmonies</i>	12
<i>Previews</i>	24
<i>Color Blindness Simulation</i>	28
<i>CSS Examples</i>	31

Color

**XYZ(43.9141, 44.2364,
45.7591)**

Conversions

Conversions Part 1

Format	Color
Hex	BEAEAD
RGB	190, 174, 173
RGB Percent	75%, 68%, 68%
CMY	0.2549, 0.3176, 0.3216
CMYK	0.00, 0.08, 0.09, 0.25
HSL	4°, 12%, 71%
HSV	4°, 9%, 75%
XYZ	43.9141, 44.2364, 45.7591
YIQ	178.6700, 9.8570, 3.0810

Conversions

Conversions Part 2

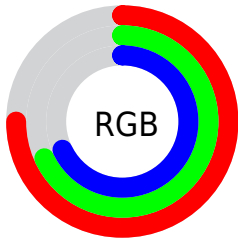
Format	Color
RYB	190, 174, 173
Decimal	12496557
CIELab	72.39, 5.56, 2.58
CIELCh	72, 6.133, 24.897
Yxy	44.2364, 0.3279, 0.3303
Android (android.graphics.Color)	4290686637 (0xFFBEAEAD)
YUV	178.6700, -2.7953, 9.9364
Hunter-Lab	66.5105, 1.4629, 5.7659

Details

The XYZ color **43.9141, 44.2364, 45.7591** is a light color, and the websafe version is hex **999999**. A complement of this color would be **44.7253, 48.9963, 55.8157**, and the grayscale version is **42.6839, 44.9068, 48.9035**.

A 20% lighter version of the original color is **80.0289, 81.2329, 84.8603**, and **20.7273, 20.6179, 20.9764** is the 20% darker color. If you saturate the color by 10%, you get **38.9779, 37.0997, 35.6789**, and if you desaturate by 10%, it is **49.5740, 52.4011, 57.3715**.

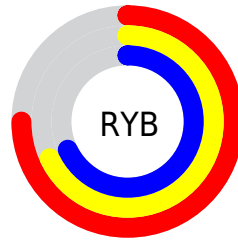
Distribution



Red (75%)

Green (68%)

Blue (68%)



Red (75%)

Yellow (68%)

Blue (68%)

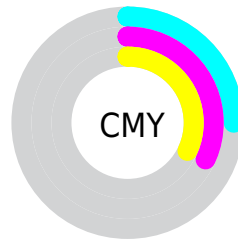


Cyan (0%)

Magenta (8%)

Yellow (9%)

Black (25%)



Cyan (25%)

Magenta (32%)

Yellow (32%)

Brightness & Saturation Gradients

These gradients show how the XYZ color 43.9141, 44.2364, 45.7591 changes by changing the brightness by 10 percent. The first figure shows a shift by +10% for each color and the second figure -10%.

Similar to the brightness gradients but the following saturation gradients show a change of the XYZ color 43.9141, 44.2364, 45.7591 by changing the saturation by 10% instead.

■ 43.9141, 44.2364,
45.7591

■ 43.9141, 44.2364,
45.7591

353.2158,
363.6721, 386.0887

■ 30.8006, 30.8564,
31.7085

■ 80.3356, 81.5733,
85.1888

■ 20.5981, 20.4895,
20.8760

104.3743,
106.2991, 111.4050

■ 12.9414, 12.7514,
12.8430

132.7855,
135.5755, 142.5135

■ 7.4649, 7.2576,
7.1911

165.9345,
169.7871, 178.9328

■ 3.8034, 3.6237,
3.5016

204.1867,
209.3181, 221.0814

■ 1.5915, 1.4654,
1.3561

247.9074,

■ 0.3869, 0.2642,

254.5530, 269.3779

0.1071

297.4620,
305.8762, 324.2408

■ 0.0000, 0.0000,
0.0000

■ 43.9141, 44.2364,
45.7591

■ 43.9141, 44.2364,
45.7591

■ 38.9779, 37.0997,
35.6789

■ 49.5740, 52.4011,
57.3715

■ 34.7327, 30.9446,
27.0643

■ 55.9813, 61.6262,
70.5735

■ 31.1488, 25.7301,
19.8480

■ 63.1632, 71.9497,
85.4226

■ 28.1928, 21.4097,
13.9560

■ 71.1442, 83.4063,
101.9732

■ 25.8286, 17.9334,
9.3080

■ 75.0454, 89.6873,
107.9638

■ 24.0162, 15.2457,
5.8147

■ 22.7107, 13.2849,
3.3748

■ 21.8602, 11.9801,
1.8697

■ 21.3916, 11.2420,
1.0999

Harmonies

Analogous

The Analogous color harmony consists of three colors that are next to each other on the color wheel.



44.1003, 44.2364, 48.6849



43.9141, 44.2364, 45.7591



43.2238, 44.2364, 43.5635

Triad

The Triadic color harmony groups three colors that are evenly spaced from another and form a triangle on the color wheel.



43.9141, 44.2364, 45.7591



40.4060, 44.2364, 44.8989



41.8650, 44.2364, 54.1931

Complementary

The Complementary color scheme is a pair of colors which are on the opposite of each other on the color wheel.



43.9141, 44.2364, 45.7591



44.7253, 48.9963, 55.8157

Split Complementary

Split-complementary colors differ from the complementary color scheme. The scheme consists of three colors, the original color and two neighbors of the complement color.



40.8886, 44.2364, 53.0816



43.9141, 44.2364, 45.7591



40.0553, 44.2364, 47.6506

Square

The Square scheme is like the rectangle color scheme, but the four colors are evenly spaced on the color wheel.



43.9141, 44.2364, 45.7591



41.1964, 44.2364, 43.0816



40.2304, 44.2364, 50.6557



42.9060, 44.2364, 53.6353

Rectangle

The Rectangle color scheme consists of four colors that form a rectangle on the color wheel.



43.9141, 44.2364, 45.7591



42.5766, 44.2364, 42.7671



40.2304, 44.2364, 50.6557



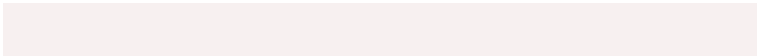
41.5186, 44.2364, 54.0010

Sweetspot

The Sweet Spot groups the original color and five complimentary colors.



43.9153, 44.2383, 45.7600



85.4674, 88.6617, 94.9920



45.3810, 44.5156, 54.4306



18.5836, 19.2035, 20.4812



92.9021, 97.7402, 106.4391



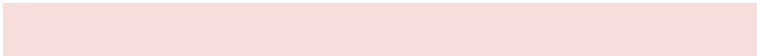
19.4759, 20.4902, 22.3138

Same Dimension

The Same Dimension uses a secret algorithm to generate beautiful new colors.



43.9153, 44.2383, 45.7600



77.4726, 77.1212, 78.6111



45.5783, 47.5643, 46.3144



9.5742, 9.6243, 9.9297



14.2215, 7.4818, 0.6946



0.5727, 0.3243, 0.0324

Inverse Universe

The Inverse Universe completely reimagines the original color for something new.



44.7253, 48.9963, 55.8157



79.2786, 87.7307, 101.0344



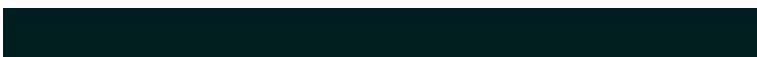
42.9812, 45.5082, 55.2343



9.7591, 10.7104, 12.2252



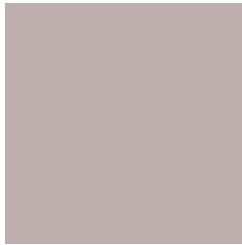
16.8910, 23.8936, 36.1146



0.6764, 0.9655, 1.4196

Previews

White Background



This preview shows how the XYZ color 43.9141, 44.2364, 45.7591 looks on a white background.

Color Contrast Check

Large Text (above 18pt) WCAG AA × Fail

Any Text WCAG AA × Fail

Large Text (above 18pt) WCAG AAA × Fail

Any Text WCAG AAA × Fail

Black Background



This preview shows how the XYZ color 43.9141, 44.2364, 45.7591 looks on a black background.

Color Contrast Check

Large Text (above 18pt) WCAG AA ✓ Pass

Any Text WCAG AA ✓ Pass

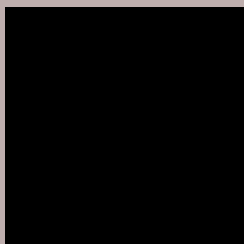
Large Text (above 18pt) WCAG AAA ✓ Pass

Any Text WCAG AAA ✓ Pass

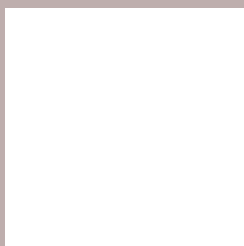
If you want to check with other color combinations, try the [Color Contrast Checker](#).

XYZ 43.9141, 44.2364, 45.7591

Background



This preview shows how black text looks on a background with the XYZ color 43.9141, 44.2364, 45.7591.



This preview shows how white text looks on a background with the XYZ color 43.9141, 44.2364,

Color Blindness Simulation

Color vision deficiency is a very complex topic, and I could not describe the different causes any better than Wikipedia does, so if you want to learn more, you should check out their [article about color blindness](#).

Dichromacy



Original Color

43.9141, 44.2364, 45.7591

Protanopia

42.5161, 44.3632, 46.8796

Deuteranopia

45.0603, 44.2579, 45.7029



Tritanopia

45.3537, 44.2567, 52.6064

Trichromacy



Original Color

43.9141, 44.2364, 45.7591

Protanomaly

42.9325, 44.2970, 46.3318

Deuteranomaly

44.7345, 44.3736, 45.7424

Tritanomaly

44.7699, 44.2997, 49.9071

Monochromacy



Original Color

43.9141, 44.2364, 45.7591

Achromatopsia

42.8472, 45.0786, 49.0906

Achromatomaly

43.1864, 44.6859, 47.9440

CSS Examples

Text

The CSS property to change the color of the text to XYZ 43.9141, 44.2364, 45.7591 is called "color". The color property can be set on classes, ids or directly on the HTML element.

This example shows how text in the color `rgb(190, 174, 173)` looks like.

```
.text, #text, p{  
    color:rgb(190, 174, 173)  
}
```

If you want to add a text shadow in that color use the text-shadow property, you can generate a text shadow directly with our [CSS Text Shadow Generator](#).

Here you see how black text with a 4 pixel rgb(190, 174, 173) colored shadow looks like.

```
.shadow{ text-shadow: 4px 4px 2px rgb(190, 174, 173) }
```

Border

The CSS property to change the border of an element to XYZ 43.9141, 44.2364, 45.7591 is called "border". The border property can be set on classes, ids or directly on the HTML element.

This example shows the color as border, it can be applied via the CSS property "border" or "border-color".

```
.border, #border, table{ border:4px solid rgb(190, 174, 173) }
```


If only the border color should be changed use the property `border-color`.

```
.border{ border-color:rgb(190, 174, 173) }
```

If you want to add a box shadow in that color use:

Here you see how a box with a 4 pixel `rgb(190, 174, 173)` colored shadow looks like.

```
.boxshadow{ -moz-box-shadow:4px 4px 4px  
4px rgb(190, 174, 173); -webkit-box-  
shadow:4px 4px 4px 4px rgb(190, 174, 173);  
box-shadow:4px 4px 4px 4px rgb(190, 174,  
173) }
```

Background

The CSS property to change the background color of an element to XYZ 43.9141, 44.2364, 45.7591 is called "background". The background property can be set on classes, ids or directly on the HTML element.

```
.background, #background, body{  
background: rgb(190, 174, 173) }
```

If only the background color should be changed can be used:

```
.background{ background-color: rgb(190,  
174, 173) }
```

This example shows the color as background, it is applied via the CSS property "background".

To optimize and compress your CSS code, you can use our [online CSS compressor and optimizer](#) based on csstidy. If you want to create a linear or radial gradient as background or border, check our [CSS Gradient Generator](#).

Hey! You found this booklet interesting? Support Converting Colors with the new Membership Option!

The pro membership hides all ads, plus gives you double the colors in the color bucket, and more awesome pro features!

[Learn more, Memberships starting at \\$2.50/m!](#)

**Follow me
on Twitter!**

@ConvertingColor