

Converting Colors

XYZ(43.8103, 40.4825, 40.1552)

Have a look what the booklet for
XYZ(43.8103, 40.4825, 40.1552)
contains.

XYZ(43.8103, 40.4825, 40.1552)	3
<i>Conversions</i>	4
<i>Details</i>	6
<i>Harmonies</i>	12
<i>Previews</i>	24
<i>Color Blindness Simulation</i>	28
<i>CSS Examples</i>	31

Color

**XYZ(43.8103, 40.4825,
40.1552)**

Conversions

Conversions Part 1

Format	Color
Hex	CBA0A3
RGB	203, 160, 163
RGB Percent	80%, 63%, 64%
CMY	0.2039, 0.3725, 0.3608
CMYK	0.00, 0.21, 0.20, 0.20
HSL	356°, 29%, 71%
HSV	356°, 21%, 80%
XYZ	43.8103, 40.4825, 40.1552
YIQ	173.1990, 24.6650, 10.0490

Conversions

Conversions Part 2

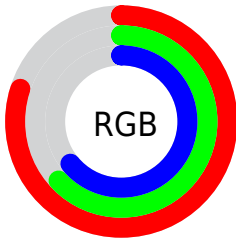
Format	Color
R _Y B	203, 160, 163
Decimal	13344931
CIE Lab	69.81, 16.35, 4.53
CIE LCh	70, 16.969, 15.472
Yxy	40.4825, 0.3520, 0.3253
Android (android.graphics.Color)	4291535011 (0xFFCBA0A3)
YUV	173.1990, -5.0281, 26.1355
Hunter-Lab	63.6259, 11.5629, 7.1193

Details

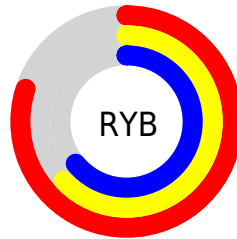
The XYZ color **43.8103, 40.4825, 40.1552** is a light color, and the websafe version is hex **CC9999**. A complement of this color would be **46.2801, 54.3566, 62.6990**, and the grayscale version is **39.8390, 41.9137, 45.6440**.

A 20% lighter version of the original color is **78.1953, 74.9228, 76.6699**, and **20.4445, 18.1687, 17.4683** is the 20% darker color. If you saturate the color by 10%, you get **39.0067, 33.3838, 30.8198**, and if you desaturate by 10%, it is **49.4435, 48.8352, 51.0148**.

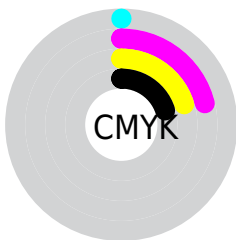
Distribution



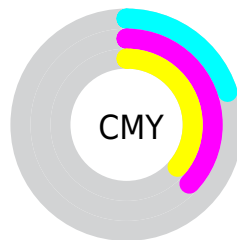
- Red (80%)
- Green (63%)
- Blue (64%)



- Red (80%)
- Yellow (63%)
- Blue (64%)



- Cyan (0%)
- Magenta (21%)
- Yellow (20%)
- Black (20%)





- Cyan (20%)
- Magenta (37%)
- Yellow (36%)

Brightness & Saturation Gradients

These gradients show how the XYZ color 43.8103, 40.4825, 40.1552 changes by changing the brightness by 10 percent. The first figure shows a shift by +10% for each color and the second figure -10%.


Similar to the brightness gradients but the following saturation gradients show a change of the XYZ color 43.8103, 40.4825, 40.1552 by changing the saturation by 10% instead.


 43.8103, 40.4825,
40.1552


 43.8103, 40.4825,
40.1552


352.7989,
348.1531, 362.3488

 30.7187, 27.9149,
27.3449


 80.1803, 75.8977,
76.6395

 20.5355, 18.2616,
17.5977


 104.1894, 99.5141,
101.1505

 12.8954, 11.1379,
10.4951


132.5684,
127.5823, 130.3988

 7.4331, 6.1597,
5.6186

165.6826,
160.4866, 164.8029

 3.7831, 2.9424,
2.5495

203.8974,
198.6114, 204.7815

 1.5802, 1.1017,
0.8662

247.5782,

 0.3794, 0.0000,

242.3412, 250.7529

0.0000

297.0902,
292.0603, 303.1359

■ 0.0000, 0.0000,
0.0000

■ 43.8103, 40.4825,
40.1552

■ 43.8103, 40.4825,
40.1552

■ 39.0067, 33.3838,
30.8198

■ 49.4435, 48.8352,
51.0148

■ 34.9903, 27.4734,
22.9380

■ 55.9393, 58.4924,
63.4597

■ 31.7200, 22.6880,
16.4373

■ 63.3332, 69.5087,
77.5511

■ 29.1498, 18.9561,
11.2381

■ 71.6574, 81.9338,
93.3459

■ 27.2284, 16.1983,
7.2526

■ 78.4388, 91.4366,
108.1226

■ 25.8975, 14.3236,
4.3823

■ 25.0883, 13.2240,
2.5129

■ 24.7090, 12.7287,
1.5753

Harmonies

Analogous

The Analogous color harmony consists of three colors that are next to each other on the color wheel.



43.8349, 40.4825, 47.9938



43.8103, 40.4825, 40.1552



42.3119, 40.4825, 34.1261

Triad

The Triadic color harmony groups three colors that are evenly spaced from another and form a triangle on the color wheel.



43.8103, 40.4825, 40.1552



34.8241, 40.4825, 34.2752



37.1641, 40.4825, 60.4508

Complementary

The Complementary color scheme is a pair of colors which are on the opposite of each other on the color wheel.



43.8103, 40.4825, 40.1552



46.2801, 54.3566, 62.6990

Split Complementary

Split-complementary colors differ from the complementary color scheme. The scheme consists of three colors, the original color and two neighbors of the complement color.



34.8818, 40.4825, 55.7992



43.8103, 40.4825, 40.1552



33.5752, 40.4825, 40.3822

Square

The Square scheme is like the rectangle color scheme, but the four colors are evenly spaced on the color wheel.



43.8103, 40.4825, 40.1552



37.0819, 40.4825, 31.0176



33.5958, 40.4825, 48.2495



39.9075, 40.4825, 60.3711

Rectangle

The Rectangle color scheme consists of four colors that form a rectangle on the color wheel.



43.8103, 40.4825, 40.1552



40.7181, 40.4825, 31.6702



33.5958, 40.4825, 48.2495



36.3205, 40.4825, 59.3665

Sweetspot

The Sweet Spot groups the original color and five complimentary colors.



43.8114, 40.4843, 40.1560



88.1541, 89.7406, 95.7115



47.0154, 41.6545, 62.0624



18.7150, 18.9799, 20.1919



0.0000, 0.0000, 0.0000



20.3446, 21.4041, 23.3091

Same Dimension

The Same Dimension uses a secret algorithm to generate beautiful new colors.



43.8114, 40.4843, 40.1560



69.8542, 62.6023, 60.4429



46.8788, 47.0437, 39.8696



11.2435, 11.2261, 11.8169



15.7372, 8.1055, 1.0686



0.8232, 0.4227, 0.1147

Inverse Universe

The Inverse Universe completely reimagines the original color for something new.



43.8114, 40.4843, 40.1560



69.8542, 62.6023, 60.4429



42.6447, 46.5198, 63.2319



11.2435, 11.2261, 11.8169



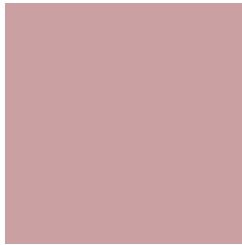
15.7372, 8.1055, 1.0686



0.8232, 0.4227, 0.1147

Previews

White Background



This preview shows how the XYZ color 43.8103, 40.4825, 40.1552 looks on a white background.

Color Contrast Check

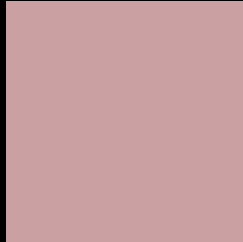
Large Text (above 18pt) WCAG AA × Fail

Any Text WCAG AA × Fail

Large Text (above 18pt) WCAG AAA × Fail

Any Text WCAG AAA × Fail

Black Background



This preview shows how the XYZ color 43.8103, 40.4825, 40.1552 looks on a black background.

Color Contrast Check

Large Text (above 18pt) WCAG AA ✓ Pass

Any Text WCAG AA ✓ Pass

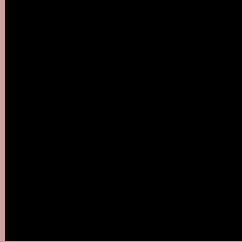
Large Text (above 18pt) WCAG AAA ✓ Pass

Any Text WCAG AAA ✓ Pass

If you want to check with other color combinations, try the [Color Contrast Checker](#).

XYZ 43.8103, 40.4825, 40.1552

Background



This preview shows how black text looks on a background with the XYZ color 43.8103, 40.4825, 40.1552.



This preview shows how white text looks on a background with the XYZ color 43.8103, 40.4825,

Color Blindness Simulation

Color vision deficiency is a very complex topic, and I could not describe the different causes any better than Wikipedia does, so if you want to learn more, you should check out their [article about color blindness](#).

Dichromacy



Original Color

43.8103, 40.4825, 40.1552

Protanopia

38.9917, 40.6127, 43.3201

Deuteranopia

41.4626, 40.5953, 39.8328



Tritanopia

44.6507, 40.5739, 44.0063

Trichromacy



Original Color

43.8103, 40.4825, 40.1552

Protanomaly

40.6189, 40.3767, 42.2119

Deuteranomaly

42.1245, 40.4051, 39.7612

Tritanomaly

44.3679, 40.4608, 42.5171

Monochromacy



Original Color

43.8103, 40.4825, 40.1552

Achromatopsia

39.7200, 41.7885, 45.5077

Achromatomaly

40.9312, 41.0602, 43.3042

CSS Examples

Text

The CSS property to change the color of the text to XYZ 43.8103, 40.4825, 40.1552 is called "color". The color property can be set on classes, ids or directly on the HTML element.

This example shows how text in the color `rgb(203, 160, 163)` looks like.

```
.text, #text, p{  
    color:rgb(203, 160, 163)  
}
```

If you want to add a text shadow in that color use the text-shadow property, you can generate a text shadow directly with our [CSS Text Shadow Generator](#).

Here you see how black text with a 4 pixel rgb(203, 160, 163) colored shadow looks like.

```
.shadow{ text-shadow: 4px 4px 2px rgb(203, 160, 163) }
```

Border

The CSS property to change the border of an element to XYZ 43.8103, 40.4825, 40.1552 is called "border". The border property can be set on classes, ids or directly on the HTML element.

This example shows the color as border, it can be applied via the CSS property "border" or "border-color".

```
.border, #border, table{ border:4px solid rgb(203, 160, 163) }
```


If only the border color should be changed use the property `border-color`.

```
.border{ border-color:rgb(203, 160, 163) }
```

If you want to add a box shadow in that color use:

Here you see how a box with a 4 pixel `rgb(203, 160, 163)` colored shadow looks like.

```
.boxshadow{ -moz-box-shadow:4px 4px 4px  
4px rgb(203, 160, 163); -webkit-box-  
shadow:4px 4px 4px 4px rgb(203, 160, 163);  
box-shadow:4px 4px 4px 4px rgb(203, 160,  
163) }
```

Background

The CSS property to change the background color of an element to XYZ 43.8103, 40.4825, 40.1552 is called "background". The background property can be set on classes, ids or directly on the HTML element.

```
.background, #background, body{  
background: rgb(203, 160, 163) }
```

If only the background color should be changed can be used:

```
.background{ background-color: rgb(203,  
160, 163) }
```

This example shows the color as background, it is applied via the CSS property "background".

To optimize and compress your CSS code, you can use our [online CSS compressor and optimizer](#) based on csstidy. If you want to create a linear or radial gradient as background or border, check our [CSS Gradient Generator](#).

Hey! You found this booklet interesting? Support Converting Colors with the new Membership Option!

The pro membership hides all ads, plus gives you double the colors in the color bucket, and more awesome pro features!

[Learn more, Memberships starting at \\$2.50/m!](#)

**Follow me
on Twitter!**

@ConvertingColor