

Converting Colors

XYZ(43.8372, 41.1338, 35.7727)

Have a look what the booklet for
XYZ(43.8372, 41.1338, 35.7727)
contains.

XYZ(43.8469, 41.1197, 35.7629)	3
<i>Conversions</i>	4
<i>Details</i>	6
<i>Harmonies</i>	12
<i>Previews</i>	24
<i>Color Blindness Simulation</i>	28
<i>CSS Examples</i>	31

Color

**XYZ(43.8469, 41.1197,
35.7629)**

Conversions

Conversions Part 1

Format	Color
Hex	CDA299
RGB	205, 162, 153
RGB Percent	80%, 64%, 60%
CMY	0.1961, 0.3647, 0.4000
CMYK	0.00, 0.21, 0.25, 0.20
HSL	10°, 34%, 70%
HSV	10°, 25%, 80%
XYZ	43.8469, 41.1197, 35.7629
YIQ	173.8310, 28.5170, 6.3170

Conversions

Conversions Part 2

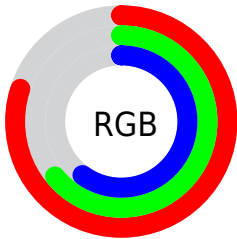
Format	Color
R_{YB}	205, 164, 153
Decimal	13476505
CIE Lab	70.26, 14.53, 10.73
CIE LCh	70, 18.065, 36.446
Yxy	41.1197, 0.3632, 0.3406
Android (android.graphics.Color)	4291666585 (0xFFCDA299)
YUV	173.8310, -10.2697, 27.3352
Hunter-Lab	64.1246, 9.8359, 11.8207

Details

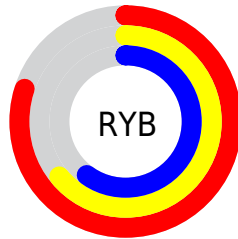
The XYZ color **43.8469, 41.1197, 35.7629** is a light color, and the websafe version is hex **CC9999**. A complement of this color would be **43.8956, 50.6584, 65.2222**, and the grayscale version is **40.1871, 42.2799, 46.0428**.

A 20% lighter version of the original color is **77.3153, 75.3907, 69.5084**, and **20.5519, 18.5952, 15.0764** is the 20% darker color. If you saturate the color by 10%, you get **39.5099, 34.9264, 26.6691**, and if you desaturate by 10%, it is **48.8795, 48.2381, 46.5246**.

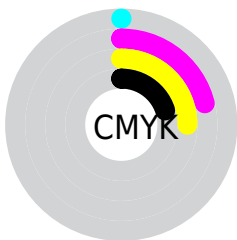
Distribution



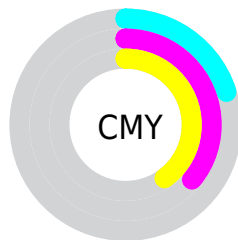
- Red (80%)
- Green (64%)
- Blue (60%)



- Red (80%)
- Yellow (64%)
- Blue (60%)



- Cyan (0%)
- Magenta (21%)
- Yellow (25%)
- Black (20%)





- Cyan (20%)
- Magenta (36%)
- Yellow (40%)

Brightness & Saturation Gradients


These gradients show how the XYZ color 43.8469, 41.1197, 35.7629 changes by changing the brightness by 10 percent. The first figure shows a shift by +10% for each color and the second figure -10%.


Similar to the brightness gradients but the following saturation gradients show a change of the XYZ color 43.8469, 41.1197, 35.7629 by changing the saturation by 10% instead.

 43.8469, 41.1197,
35.7629


 43.8469, 41.1197,
35.7629


352.9459,
350.8206, 342.9290

 30.7476, 28.4126,
23.9629


 80.2351, 76.8656,
69.8309

 20.5576, 18.6369,
15.0942


 104.2547,
100.6732, 92.9359

 12.9116, 11.4082,
8.7381


132.6450,
128.9497, 120.6464

 7.4443, 6.3421,
4.4763

165.7715,
162.0796, 153.3808

 3.7903, 3.0542,
1.8901

203.9995,
200.4473, 191.5578

 1.5842, 1.1601,
0.4864

247.6943,

 0.3821, 0.0288,

244.4370, 235.5958

0.0000

297.2213,
294.4334, 285.9133

■ 0.0000, 0.0000,
0.0000

■ 43.8469, 41.1197,
35.7629

■ 43.8469, 41.1197,
35.7629

■ 39.5099, 34.9264,
26.6691

■ 48.8795, 48.2381,
46.5246

■ 35.8344, 29.6147,
19.1571

■ 54.6333, 56.3116,
59.0294

■ 32.7882, 25.1457,
13.1367

■ 61.1367, 65.3760,
73.3511

■ 30.3351, 21.4758,
8.5078

■ 68.4154, 75.4633,
89.5582

■ 28.4351, 18.5571,
5.1578

■ 76.4133, 86.5720,
107.2904

■ 27.0430, 16.3365,
2.9563

■ 78.9869, 91.7192,
108.1483

■ 26.1057, 14.7535,
1.7446

■ 25.7927, 14.2107,
1.3835

Harmonies

Analogous

The Analogous color harmony consists of three colors that are next to each other on the color wheel.



45.0213, 41.1197, 42.9656



43.8469, 41.1197, 35.7629



41.4039, 41.1197, 31.4204

Triad

The Triadic color harmony groups three colors that are evenly spaced from another and form a triangle on the color wheel.



43.8469, 41.1197, 35.7629



34.0902, 41.1197, 38.5642



39.7261, 41.1197, 63.0192

Complementary

The Complementary color scheme is a pair of colors which are on the opposite of each other on the color wheel.



43.8469, 41.1197, 35.7629



43.8956, 50.6584, 65.2222

Split Complementary

Split-complementary colors differ from the complementary color scheme. The scheme consists of three colors, the original color and two neighbors of the complement color.



36.8505, 41.1197, 61.4547



43.8469, 41.1197, 35.7629



33.6913, 41.1197, 46.6291

Square

The Square scheme is like the rectangle color scheme, but the four colors are evenly spaced on the color wheel.



43.8469, 41.1197, 35.7629



35.7956, 41.1197, 32.8891



34.6774, 41.1197, 55.1805



42.5658, 41.1197, 59.2201

Rectangle

The Rectangle color scheme consists of four colors that form a rectangle on the color wheel.



43.8469, 41.1197, 35.7629



39.4372, 41.1197, 30.3834



34.6774, 41.1197, 55.1805



38.7310, 41.1197, 63.1094

Sweetspot

The Sweet Spot groups the original color and five complimentary colors.



43.8480, 41.1216, 35.7637



86.7908, 88.4613, 90.7950



46.5702, 39.7628, 57.6444



18.2636, 18.4953, 18.7517



0.0000, 0.0000, 0.0000



20.3446, 21.4041, 23.3091

Same Dimension

The Same Dimension uses a secret algorithm to generate beautiful new colors.



43.8480, 41.1216, 35.7637



68.1202, 62.0825, 50.7760



48.8390, 51.1035, 37.4274



11.3668, 11.5225, 11.7044



16.1056, 8.9441, 0.8775



0.8805, 0.5606, 0.0618

Inverse Universe

The Inverse Universe completely reimagines the original color for something new.



43.8956, 50.6584, 65.2222



68.2039, 80.1019, 106.4742



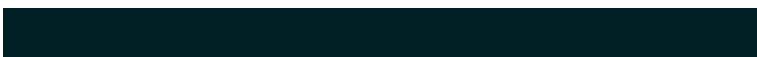
38.5940, 40.0551, 63.4550



11.3716, 12.3836, 14.3613



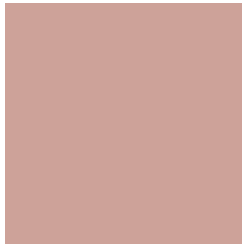
15.8127, 20.6493, 39.1086



0.8604, 1.1546, 2.0325

Previews

White Background



This preview shows how the XYZ color 43.8469, 41.1197, 35.7629 looks on a white background.

Color Contrast Check

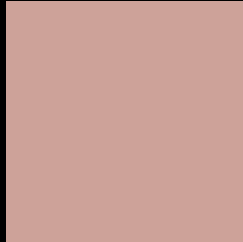
Large Text (above 18pt) WCAG AA × Fail

Any Text WCAG AA × Fail

Large Text (above 18pt) WCAG AAA × Fail

Any Text WCAG AAA × Fail

Black Background



This preview shows how the XYZ color 43.8469, 41.1197, 35.7629 looks on a black background.

Color Contrast Check

Large Text (above 18pt) WCAG AA ✓ Pass

Any Text WCAG AA ✓ Pass

Large Text (above 18pt) WCAG AAA ✓ Pass

Any Text WCAG AAA ✓ Pass

If you want to check with other color combinations, try the [Color Contrast Checker](#).

XYZ 43.8469, 41.1197, 35.7629

Background



This preview shows how black text looks on a background with the XYZ color 43.8469, 41.1197, 35.7629.



This preview shows how white text looks on a background with the XYZ color 43.8469, 41.1197,

35.7629.

Color Blindness Simulation

Color vision deficiency is a very complex topic, and I could not describe the different causes any better than Wikipedia does, so if you want to learn more, you should check out their [article about color blindness](#).

Dichromacy



Original Color

43.8469, 41.1197, 35.7629

Protanopia

39.0946, 41.0594, 38.2125

Deuteranopia

42.0687, 41.2752, 35.4554



Tritanopia

45.5767, 41.0402, 44.5491

Trichromacy



Original Color

43.8469, 41.1197, 35.7629

Protanomaly

40.7424, 41.0969, 37.2376

Deuteranomaly

42.6758, 41.3194, 35.4319

Tritanomaly

44.8159, 40.9800, 41.1452

Monochromacy



Original Color

43.8469, 41.1197, 35.7629

Achromatopsia

40.2316, 42.3268, 46.0938

Achromatomaly

41.2652, 41.8169, 41.9730

CSS Examples

Text

The CSS property to change the color of the text to XYZ 43.8469, 41.1197, 35.7629 is called "color". The color property can be set on classes, ids or directly on the HTML element.

This example shows how text in the color rgb(205, 162, 153) looks like.

```
.text, #text, p{  
    color:rgb(205, 162, 153)  
}
```

If you want to add a text shadow in that color use the text-shadow property, you can generate a text shadow directly with our [CSS Text Shadow Generator](#).

Here you see how black text with a 4 pixel rgb(205, 162, 153) colored shadow looks like.

```
.shadow{ text-shadow: 4px 4px 2px rgb(205, 162, 153) }
```

Border

The CSS property to change the border of an element to XYZ 43.8469, 41.1197, 35.7629 is called "border". The border property can be set on classes, ids or directly on the HTML element.

This example shows the color as border, it can be applied via the CSS property "border" or "border-color".

```
.border, #border, table{ border:4px solid rgb(205, 162, 153) }
```


If only the border color should be changed use the property `border-color`.

```
.border{ border-color:rgb(205, 162, 153) }
```

If you want to add a box shadow in that color use:

Here you see how a box with a 4 pixel `rgb(205, 162, 153)` colored shadow looks like.

```
.boxshadow{ -moz-box-shadow:4px 4px 4px  
4px rgb(205, 162, 153); -webkit-box-  
shadow:4px 4px 4px 4px rgb(205, 162, 153);  
box-shadow:4px 4px 4px 4px rgb(205, 162,  
153) }
```

Background

The CSS property to change the background color of an element to XYZ 43.8469, 41.1197, 35.7629 is called "background". The background property can be set on classes, ids or directly on the HTML element.

```
.background, #background, body{  
background: rgb(205, 162, 153) }
```

If only the background color should be changed can be used:

```
.background{ background-color: rgb(205,  
162, 153) }
```

This example shows the color as background, it is applied via the CSS property "background".

To optimize and compress your CSS code, you can use our [online CSS compressor and optimizer](#) based on csstidy. If you want to create a linear or radial gradient as background or border, check our [CSS Gradient Generator](#).

Hey! You found this booklet interesting? Support Converting Colors with the new Membership Option!

The pro membership hides all ads, plus gives you double the colors in the color bucket, and more awesome pro features!

[Learn more, Memberships starting at \\$2.50/m!](#)

**Follow me
on Twitter!**

@ConvertingColor