

Converting Colors

XYZ(43.8416, 42.8785, 38.2154)

Have a look what the booklet for
XYZ(43.8416, 42.8785, 38.2154)
contains.

XYZ(43.9127, 42.9867, 38.3306)	3
<i>Conversions</i>	4
<i>Details</i>	6
<i>Harmonies</i>	12
<i>Previews</i>	24
<i>Color Blindness Simulation</i>	28
<i>CSS Examples</i>	31

Color

**XYZ(43.9127, 42.9867,
38.3306)**

Conversions

Conversions Part 1

Format	Color
Hex	C7A99E
RGB	199, 169, 158
RGB Percent	78%, 66%, 62%
CMY	0.2196, 0.3372, 0.3804
CMYK	0.00, 0.15, 0.21, 0.22
HSL	16°, 27%, 70%
HSV	16°, 21%, 78%
XYZ	43.9127, 42.9867, 38.3306
YIQ	176.7160, 21.4110, 2.9390

Conversions

Conversions Part 2

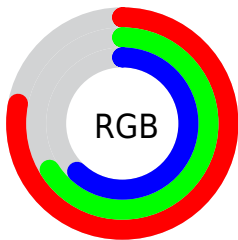
Format	Color
RYB	199, 173, 158
Decimal	13085086
CIELab	71.55, 9.18, 9.72
CIELCh	72, 13.372, 46.643
Yxy	42.9867, 0.3507, 0.3433
Android (android.graphics.Color)	4291275166 (0xFFC7A99E)
YUV	176.7160, -9.2270, 19.5431
Hunter-Lab	65.5642, 4.8158, 11.2325

Details

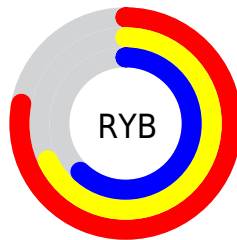
The XYZ color **43.9127, 42.9867, 38.3306** is a light color, and the websafe version is hex **CC9999**. A complement of this color would be **42.3922, 47.3578, 60.9397**, and the grayscale version is **41.6809, 43.8516, 47.7544**.

A 20% lighter version of the original color is **79.9059, 79.3754, 74.0603**, and **20.6922, 19.8039, 16.6418** is the 20% darker color. If you saturate the color by 10%, you get **39.7774, 37.2388, 29.1745**, and if you desaturate by 10%, it is **48.6293, 49.4527, 49.0499**.

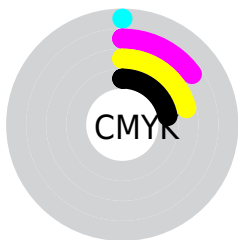
Distribution



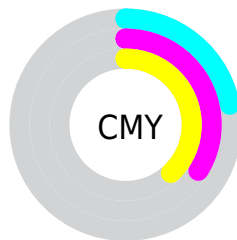
- Red (78%)
- Green (66%)
- Blue (62%)



- Red (78%)
- Yellow (68%)
- Blue (62%)



- Cyan (0%)
- Magenta (15%)
- Yellow (21%)
- Black (22%)




- Cyan (22%)
- Magenta (34%)
- Yellow (38%)

Brightness & Saturation Gradients

These gradients show how the XYZ color 43.9127, 42.9867, 38.3306 changes by changing the brightness by 10 percent. The first figure shows a shift by +10% for each color and the second figure -10%.


Similar to the brightness gradients but the following saturation gradients show a change of the XYZ color 43.9127, 42.9867, 38.3306 by changing the saturation by 10% instead.


 43.9127, 42.9867,
38.3306


 43.9127, 42.9867,
38.3306


353.2101,
358.5571, 354.3767

 30.7995, 29.8747,
25.9356


 80.3335, 79.6908,
73.8236

 20.5973, 19.7435,
16.5501


 104.3719,
104.0516, 97.7587

 12.9407, 12.2087,
9.7557

132.7826,
132.9309, 126.3775

 7.4645, 6.8860,
5.1338

165.9311,
166.7130, 160.0986

 3.8031, 3.3909,
2.2659

204.1828,
205.7822, 199.3405

 1.5914, 1.3391,
0.7120

247.9030,

 0.3868, 0.1711,

250.5231, 244.5218

0.0000

297.4569,
301.3199, 296.0610

■ 0.0000, 0.0000,
0.0000

■ 43.9127, 42.9867,
38.3306

■ 43.9127, 42.9867,
38.3306

■ 39.7774, 37.2388,
29.1745

■ 48.6293, 49.4527,
49.0499

■ 36.1968, 32.1781,
21.5055

■ 53.9457, 56.6547,
61.3983

■ 33.1473, 27.7801,
15.2450

■ 59.8835, 64.6173,
75.4412

■ 30.6021, 24.0165,
10.3061

■ 66.4625, 73.3621,
91.2397

■ 28.5318, 20.8568,
6.5921

■ 73.2960, 82.7477,
106.7165

■ 26.9039, 18.2680,
3.9931

■ 77.3633, 90.8822,
108.0723

■ 25.6809, 16.2134,
2.3788

■ 24.8451, 14.7259,
1.5329

Harmonies

Analogous

The Analogous color harmony consists of three colors that are next to each other on the color wheel.



45.1620, 42.9867, 43.3320



43.9127, 42.9867, 38.3306



41.8692, 42.9867, 35.7154

Triad

The Triadic color harmony groups three colors that are evenly spaced from another and form a triangle on the color wheel.



43.9127, 42.9867, 38.3306



36.7756, 42.9867, 43.9899



42.1143, 42.9867, 59.7638

Complementary

The Complementary color scheme is a pair of colors which are on the opposite of each other on the color wheel.



43.9127, 42.9867, 38.3306



42.3922, 47.3578, 60.9397

Split Complementary

Split-complementary colors differ from the complementary color scheme. The scheme consists of three colors, the original color and two neighbors of the complement color.



39.8624, 42.9867, 59.9814



43.9127, 42.9867, 38.3306



36.8357, 42.9867, 50.4592

Square

The Square scheme is like the rectangle color scheme, but the four colors are evenly spaced on the color wheel.



43.9127, 42.9867, 38.3306



37.7801, 42.9867, 38.7739



37.9475, 42.9867, 56.4450



44.0978, 42.9867, 55.8754

Rectangle

The Rectangle color scheme consists of four colors that form a rectangle on the color wheel.



43.9127, 42.9867, 38.3306



40.3571, 42.9867, 35.5046



37.9475, 42.9867, 56.4450



41.3621, 42.9867, 60.2804

Sweetspot

The Sweet Spot groups the original color and five complimentary colors.



43.9139, 42.9886, 38.3315



89.2161, 92.1183, 95.2830



44.8647, 40.2301, 53.0155



18.9651, 19.5398, 20.0912



0.0000, 0.0000, 0.0000



20.3446, 21.4041, 23.3091

Same Dimension

The Same Dimension uses a secret algorithm to generate beautiful new colors.



43.9139, 42.9886, 38.3315



73.3152, 70.3200, 59.1436



48.0160, 51.1930, 39.6989



10.8616, 11.0923, 11.1313



16.0385, 9.5942, 1.0065



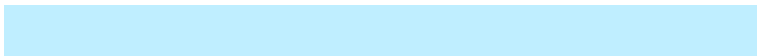
0.8211, 0.5777, 0.0682

Inverse Universe

The Inverse Universe completely reimagines the original color for something new.



42.3922, 47.3578, 60.9397



70.1414, 79.4139, 106.2393



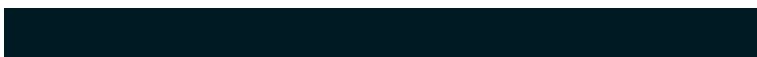
38.3326, 39.2387, 59.5865



10.6966, 11.5673, 13.5864



13.2732, 15.9403, 37.1216



0.6859, 0.8696, 1.7768

Previews

White Background



This preview shows how the XYZ color 43.9127, 42.9867, 38.3306 looks on a white background.

Color Contrast Check

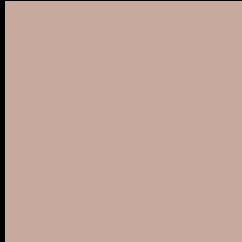
Large Text (above 18pt) WCAG AA × Fail

Any Text WCAG AA × Fail

Large Text (above 18pt) WCAG AAA × Fail

Any Text WCAG AAA × Fail

Black Background



This preview shows how the XYZ color 43.9127, 42.9867, 38.3306 looks on a black background.

Color Contrast Check

Large Text (above 18pt) WCAG AA ✓ Pass

Any Text WCAG AA ✓ Pass

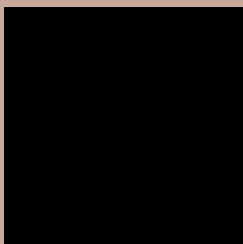
Large Text (above 18pt) WCAG AAA ✓ Pass

Any Text WCAG AAA ✓ Pass

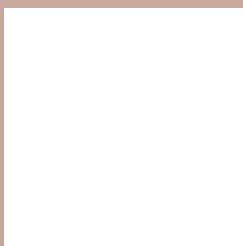
If you want to check with other color combinations, try the [Color Contrast Checker](#).

XYZ 43.9127, 42.9867, 38.3306

Background



This preview shows how black text looks on a background with the XYZ color 43.9127, 42.9867, 38.3306.



This preview shows how white text looks on a background with the XYZ color 43.9127, 42.9867,

Color Blindness Simulation

Color vision deficiency is a very complex topic, and I could not describe the different causes any better than Wikipedia does, so if you want to learn more, you should check out their [article about color blindness](#).

Dichromacy



Original Color

43.9127, 42.9867, 38.3306

Protanopia

41.0544, 43.1782, 39.8886

Deuteranopia

43.9127, 42.9867, 38.3306



Tritanopia

46.1300, 43.0837, 48.5325

Trichromacy



Original Color

43.9127, 42.9867, 38.3306

Protanomaly

42.0278, 43.1166, 39.3649

Deuteranomaly

43.9127, 42.9867, 38.3306

Tritanomaly

45.2568, 42.9952, 44.4417

Monochromacy



Original Color

43.9127, 42.9867, 38.3306

Achromatopsia

41.7894, 43.9657, 47.8787

Achromatomaly

42.3993, 43.4887, 44.1897

CSS Examples

Text

The CSS property to change the color of the text to XYZ 43.9127, 42.9867, 38.3306 is called "color". The color property can be set on classes, ids or directly on the HTML element.

This example shows how text in the color `rgb(199, 169, 158)` looks like.

```
.text, #text, p{  
    color:rgb(199, 169, 158)  
}
```

If you want to add a text shadow in that color use the text-shadow property, you can generate a text shadow directly with our [CSS Text Shadow Generator](#).

Here you see how black text with a 4 pixel rgb(199, 169, 158) colored shadow looks like.

```
.shadow{ text-shadow: 4px 4px 2px rgb(199, 169, 158) }
```

Border

The CSS property to change the border of an element to XYZ 43.9127, 42.9867, 38.3306 is called "border". The border property can be set on classes, ids or directly on the HTML element.

This example shows the color as border, it can be applied via the CSS property "border" or "border-color".

```
.border, #border, table{ border:4px solid rgb(199, 169, 158) }
```


If only the border color should be changed use the property `border-color`.

```
.border{ border-color:rgb(199, 169, 158) }
```

If you want to add a box shadow in that color use:

Here you see how a box with a 4 pixel `rgb(199, 169, 158)` colored shadow looks like.

```
.boxshadow{ -moz-box-shadow:4px 4px 4px  
4px rgb(199, 169, 158); -webkit-box-  
shadow:4px 4px 4px 4px rgb(199, 169, 158);  
box-shadow:4px 4px 4px 4px rgb(199, 169,  
158) }
```

Background

The CSS property to change the background color of an element to XYZ 43.9127, 42.9867, 38.3306 is called "background". The background property can be set on classes, ids or directly on the HTML element.

```
.background, #background, body{  
background: rgb(199, 169, 158) }
```

If only the background color should be changed can be used:

```
.background{ background-color: rgb(199,  
169, 158) }
```

This example shows the color as background, it is applied via the CSS property "background".

To optimize and compress your CSS code, you can use our [online CSS compressor and optimizer](#) based on csstidy. If you want to create a linear or radial gradient as background or border, check our [CSS Gradient Generator](#).

Hey! You found this booklet interesting? Support Converting Colors with the new Membership Option!

The pro membership hides all ads, plus gives you double the colors in the color bucket, and more awesome pro features!

[Learn more, Memberships starting at \\$2.50/m!](#)

**Follow me
on Twitter!**

@ConvertingColor