

Converting Colors

XYZ(43.9154, 41.3983, 36.6864)

Have a look what the booklet for
XYZ(43.9154, 41.3983, 36.6864)
contains.

XYZ(43.9154, 41.3983, 36.6864)	3
<i>Conversions</i>	4
<i>Details</i>	6
<i>Harmonies</i>	12
<i>Previews</i>	24
<i>Color Blindness Simulation</i>	28
<i>CSS Examples</i>	31

Color

**XYZ(43.9154, 41.3983,
36.6864)**

Conversions

Conversions Part 1

Format	Color
Hex	CCA39B
RGB	204, 163, 155
RGB Percent	80%, 64%, 61%
CMY	0.2000, 0.3608, 0.3922
CMYK	0.00, 0.20, 0.24, 0.20
HSL	10°, 32%, 70%
HSV	10°, 24%, 80%
XYZ	43.9154, 41.3983, 36.6864
YIQ	174.3470, 27.0040, 6.2040

Conversions

Conversions Part 2

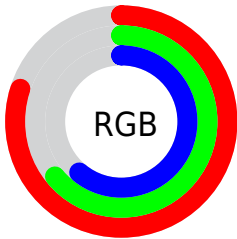
Format	Color
RYB	204, 165, 155
Decimal	13411227
CIELab	70.45, 13.89, 9.89
CIELCh	70, 17.054, 35.440
Yxy	41.3983, 0.3600, 0.3393
Android (android.graphics.Color)	4291601307 (0xFFCCA39B)
YUV	174.3470, -9.5381, 26.0057
Hunter-Lab	64.3415, 9.2350, 11.2329

Details

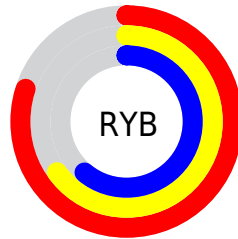
The XYZ color **43.9154, 41.3983, 36.6864** is a light color, and the websafe version is hex **CC9999**. A complement of this color would be **44.1560, 50.8066, 64.6063**, and the grayscale version is **40.4493, 42.5558, 46.3432**.

A 20% lighter version of the original color is **77.8200, 76.0063, 70.8907**, and **20.5776, 18.7579, 15.6328** is the 20% darker color. If you saturate the color by 10%, you get **39.5163, 35.1139, 27.4696**, and if you desaturate by 10%, it is **49.0152, 48.6203, 47.5656**.

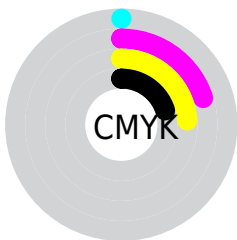
Distribution



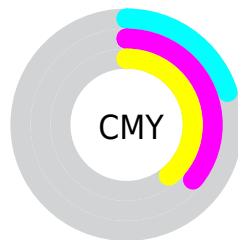
- Red (80%)
- Green (64%)
- Blue (61%)



- Red (80%)
- Yellow (65%)
- Blue (61%)



- Cyan (0%)
- Magenta (20%)
- Yellow (24%)
- Black (20%)





- Cyan (20%)
- Magenta (36%)
- Yellow (39%)

Brightness & Saturation Gradients


These gradients show how the XYZ color 43.9154, 41.3983, 36.6864 changes by changing the brightness by 10 percent. The first figure shows a shift by +10% for each color and the second figure -10%.


Similar to the brightness gradients but the following saturation gradients show a change of the XYZ color 43.9154, 41.3983, 36.6864 by changing the saturation by 10% instead.

 43.9154, 41.3983,
36.6864

 43.9154, 41.3983,
36.6864


353.2210,
351.9826, 347.0785

 30.8016, 28.6304,
24.6709


 80.3376, 77.2882,
71.2711

 20.5989, 18.8014,
15.6152


 104.3767,
101.1789, 94.6774

 12.9419, 11.5269,
9.1009


132.7883,
129.5462, 122.7178

 7.4653, 6.4224,
4.7093


165.9377,
162.7742, 155.8106

 3.8037, 3.1036,
2.0220

204.1903,
201.2475, 194.3746

 1.5917, 1.1861,
0.5688

247.9115,

 0.3870, 0.0503,

245.3504, 238.8282

0.0000

297.4666,
295.4673, 289.5900

■ 0.0000, 0.0000,
0.0000

■ 43.9154, 41.3983,
36.6864

■ 43.9154, 41.3983,
36.6864

■ 39.5163, 35.1139,
27.4696

■ 49.0152, 48.6203,
47.5656

■ 35.7837, 29.7231,
19.8308

■ 54.8413, 56.8103,
60.1810

■ 32.6857, 25.1867,
13.6817

■ 61.4220, 66.0043,
74.6051

■ 30.1862, 21.4604,
8.9246

■ 68.7830, 76.2350,
90.9053

■ 28.2453, 18.4960,
5.4497

■ 76.6251, 87.4038,
107.4398

■ 26.8183, 16.2398,
3.1308

■ 78.7119, 91.5774,
108.1354

■ 25.8528, 14.6311,
1.8158

■ 25.4548, 13.9431,
1.3497

Harmonies

Analogous

The Analogous color harmony consists of three colors that are next to each other on the color wheel.



44.9746, 41.3983, 43.6248



43.9154, 41.3983, 36.6864



41.6363, 41.3983, 32.4172

Triad

The Triadic color harmony groups three colors that are evenly spaced from another and form a triangle on the color wheel.



43.9154, 41.3983, 36.6864



34.6360, 41.3983, 38.9458



39.8622, 41.3983, 62.2988

Complementary

The Complementary color scheme is a pair of colors which are on the opposite of each other on the color wheel.



43.9154, 41.3983, 36.6864



44.1560, 50.8066, 64.6063

Split Complementary

Split-complementary colors differ from the complementary color scheme. The scheme consists of three colors, the original color and two neighbors of the complement color.



37.1448, 41.3983, 60.6629



43.9154, 41.3983, 36.6864



34.2111, 41.3983, 46.5584

Square

The Square scheme is like the rectangle color scheme, but the four colors are evenly spaced on the color wheel.



43.9154, 41.3983, 36.6864



36.2977, 41.3983, 33.6089



35.1085, 41.3983, 54.6554



42.5642, 41.3983, 58.8925

Rectangle

The Rectangle color scheme consists of four colors that form a rectangle on the color wheel.



43.9154, 41.3983, 36.6864



39.7789, 41.3983, 31.3450



35.1085, 41.3983, 54.6554



38.9199, 41.3983, 62.3245

Sweetspot

The Sweet Spot groups the original color and five complimentary colors.



43.9165, 41.4002, 36.6873



87.7274, 89.7421, 92.9339



46.6615, 40.2957, 57.9321



18.6484, 19.0275, 19.6121



0.0000, 0.0000, 0.0000



20.3446, 21.4041, 23.3091

Same Dimension

The Same Dimension uses a secret algorithm to generate beautiful new colors.



43.9165, 41.4002, 36.6873



68.6842, 62.7955, 52.2437



48.5571, 50.6813, 38.2341



11.3579, 11.5048, 11.7015



16.0672, 8.8673, 0.8647



0.8764, 0.5525, 0.0604

Inverse Universe

The Inverse Universe completely reimagines the original color for something new.



44.1560, 50.8066, 64.6063



69.1446, 81.1034, 106.6180



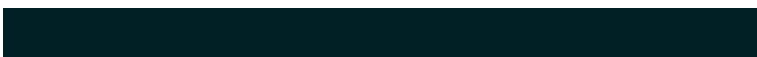
39.1982, 40.8908, 62.9537



11.3812, 12.4029, 14.3645



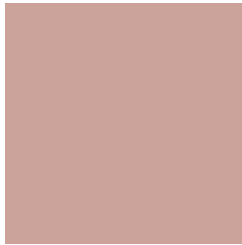
16.0457, 21.1153, 39.1862



0.8705, 1.1747, 2.0358

Previews

White Background



This preview shows how the XYZ color 43.9154, 41.3983, 36.6864 looks on a white background.

Color Contrast Check

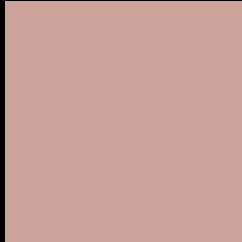
Large Text (above 18pt) WCAG AA × Fail

Any Text WCAG AA × Fail

Large Text (above 18pt) WCAG AAA × Fail

Any Text WCAG AAA × Fail

Black Background



This preview shows how the XYZ color 43.9154, 41.3983, 36.6864 looks on a black background.

Color Contrast Check

Large Text (above 18pt) WCAG AA ✓ Pass

Any Text WCAG AA ✓ Pass

Large Text (above 18pt) WCAG AAA ✓ Pass

Any Text WCAG AAA ✓ Pass

If you want to check with other color combinations, try the [Color Contrast Checker](#).

XYZ 43.9154, 41.3983, 36.6864

Background



This preview shows how black text looks on a background with the XYZ color 43.9154, 41.3983, 36.6864.



This preview shows how white text looks on a background with the XYZ color 43.9154, 41.3983,

36.6864.

Color Blindness Simulation

Color vision deficiency is a very complex topic, and I could not describe the different causes any better than Wikipedia does, so if you want to learn more, you should check out their [article about color blindness](#).

Dichromacy



Original Color

43.9154, 41.3983, 36.6864

Protanopia

39.6881, 41.6268, 39.2007

Deuteranopia

42.2339, 41.3413, 36.3256



Tritanopia

45.5672, 41.2806, 45.1015

Trichromacy



Original Color

43.9154, 41.3983, 36.6864

Protanomaly

41.0986, 41.5359, 38.1989

Deuteranomaly

42.8411, 41.3855, 36.3021

Tritanomaly

44.8046, 41.2220, 41.6716

Monochromacy



Original Color

43.9154, 41.3983, 36.6864

Achromatopsia

40.2316, 42.3268, 46.0938

Achromatomaly

41.3574, 41.8538, 42.4580

CSS Examples

Text

The CSS property to change the color of the text to XYZ 43.9154, 41.3983, 36.6864 is called "color". The color property can be set on classes, ids or directly on the HTML element.

This example shows how text in the color `rgb(204, 163, 155)` looks like.

```
.text, #text, p{  
    color:rgb(204, 163, 155)  
}
```

If you want to add a text shadow in that color use the text-shadow property, you can generate a text shadow directly with our [CSS Text Shadow Generator](#).

Here you see how black text with a 4 pixel rgb(204, 163, 155) colored shadow looks like.

```
.shadow{ text-shadow: 4px 4px 2px rgb(204, 163, 155) }
```

Border

The CSS property to change the border of an element to XYZ 43.9154, 41.3983, 36.6864 is called "border". The border property can be set on classes, ids or directly on the HTML element.

This example shows the color as border, it can be applied via the CSS property "border" or "border-color".

```
.border, #border, table{ border:4px solid rgb(204, 163, 155) }
```


If only the border color should be changed use the property `border-color`.

```
.border{ border-color:rgb(204, 163, 155) }
```

If you want to add a box shadow in that color use:

Here you see how a box with a 4 pixel `rgb(204, 163, 155)` colored shadow looks like.

```
.boxshadow{ -moz-box-shadow:4px 4px 4px  
4px rgb(204, 163, 155); -webkit-box-  
shadow:4px 4px 4px 4px rgb(204, 163, 155);  
box-shadow:4px 4px 4px 4px rgb(204, 163,  
155) }
```

Background

The CSS property to change the background color of an element to XYZ 43.9154, 41.3983, 36.6864 is called "background". The background property can be set on classes, ids or directly on the HTML element.

```
.background, #background, body{  
background: rgb(204, 163, 155) }
```

If only the background color should be changed can be used:

```
.background{ background-color: rgb(204,  
163, 155) }
```

This example shows the color as background, it is applied via the CSS property "background".

To optimize and compress your CSS code, you can use our [online CSS compressor and optimizer](#) based on csstidy. If you want to create a linear or radial gradient as background or border, check our [CSS Gradient Generator](#).

Hey! You found this booklet interesting? Support Converting Colors with the new Membership Option!

The pro membership hides all ads, plus gives you double the colors in the color bucket, and more awesome pro features!

[Learn more, Memberships starting at \\$2.50/m!](#)

**Follow me
on Twitter!**

@ConvertingColor