

Converting Colors

XYZ(43.9502, 40.0190, 33.0118)

Have a look what the booklet for
XYZ(43.9502, 40.0190, 33.0118)
contains.

XYZ(43.9018, 39.9222, 32.9956)	3
<i>Conversions</i>	4
<i>Details</i>	6
<i>Harmonies</i>	12
<i>Previews</i>	24
<i>Color Blindness Simulation</i>	28
<i>CSS Examples</i>	31

Color

**XYZ(43.9018, 39.9222,
32.9956)**

Conversions

Conversions Part 1

Format	Color
Hex	D29D93
RGB	210, 157, 147
RGB Percent	82%, 62%, 58%
CMY	0.1765, 0.3843, 0.4235
CMYK	0.00, 0.25, 0.30, 0.18
HSL	10°, 41%, 70%
HSV	10°, 30%, 82%
XYZ	43.9018, 39.9222, 32.9956
YIQ	171.7070, 34.7980, 8.1260

Conversions

Conversions Part 2

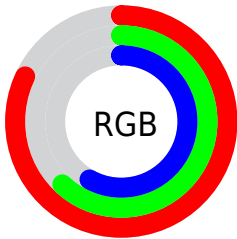
Format	Color
R _Y B	210, 159, 147
Decimal	13802899
CIE Lab	69.41, 18.34, 12.93
CIE LCh	69, 22.437, 35.186
Yxy	39.9222, 0.3758, 0.3417
Android (android.graphics.Color)	4291992979 (0xFFD29D93)
YUV	171.7070, -12.1806, 33.5830
Hunter-Lab	63.1840, 13.4541, 13.2667

Details

The XYZ color **43.9018, 39.9222, 32.9956** is a light color, and the websafe version is hex **CC9999**. A complement of this color would be **44.3191, 52.1630, 68.7056**, and the grayscale version is **39.1128, 41.1497, 44.8120**.

A 20% lighter version of the original color is **75.3261, 72.5640, 65.2945**, and **20.4893, 17.8177, 13.4256** is the 20% darker color. If you saturate the color by 10%, you get **39.6263, 33.7720, 24.1691**, and if you desaturate by 10%, it is **48.9124, 47.0608, 43.5520**.

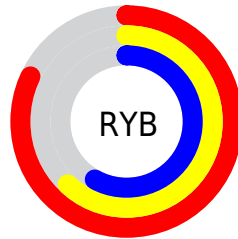
Distribution



Red (82%)

Green (62%)

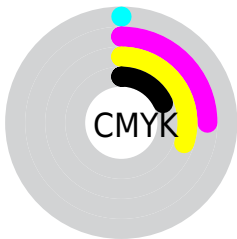
Blue (58%)



Red (82%)

Yellow (62%)

Blue (58%)

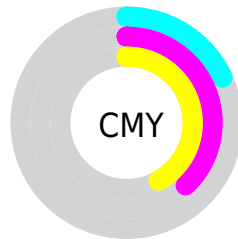


Cyan (0%)

Magenta (25%)

Yellow (30%)

Black (18%)



Cyan (18%)

Magenta (38%)


Yellow (42%)

Brightness & Saturation Gradients


These gradients show how the XYZ color 43.9018, 39.9222, 32.9956 changes by changing the brightness by 10 percent. The first figure shows a shift by +10% for each color and the second figure -10%.


Similar to the brightness gradients but the following saturation gradients show a change of the XYZ color 43.9018, 39.9222, 32.9956 by changing the saturation by 10% instead.


 43.9018, 39.9222,
32.9956


 43.9018, 39.9222,
32.9956


353.1664,
345.7955, 330.2613

 30.7909, 27.4779,
21.8520


 80.3172, 75.0450,
65.4846

 20.5907, 17.9325,
13.5509

 104.3524, 98.4923,
87.6670

 12.9359, 10.9015,
7.6738


132.7598,
126.3761, 114.3662

 7.4611, 6.0006,
3.8022

165.9047,
159.0807, 146.0006

 3.8010, 2.8455,
1.5175

204.1524,
196.9906, 182.9888

 1.5902, 1.0516,
0.2309

247.8684,

 0.3860, 0.0000,

240.4901, 225.7492

0.0000

297.4179,
289.9636, 274.7006

0.0000, 0.0000,
0.0000

43.9018, 39.9222,
32.9956

43.9018, 39.9222,
32.9956

39.6263, 33.7720,
24.1691

48.9124, 47.0608,
43.5520

36.0480, 28.5610,
16.9778

54.6873, 55.2228,
55.9215

33.1300, 24.2444,
11.3212

61.2583, 64.4486,
70.1847

30.8310, 20.7713,
7.0871

68.6541, 74.7746,
86.4167

29.1048, 18.0858,
4.1475

76.9021, 86.2356,
104.6885

■ 27.8982, 16.1247,
2.3515

■ 80.3884, 92.4417,
108.2138

■ 27.1320, 14.8089,
1.4284

■ 27.1320, 14.8088,
1.4284

Harmonies

Analogous

The Analogous color harmony consists of three colors that are next to each other on the color wheel.



45.2817, 39.9222, 41.6974



43.9018, 39.9222, 32.9956



40.9314, 39.9222, 27.8136

Triad

The Triadic color harmony groups three colors that are evenly spaced from another and form a triangle on the color wheel.



43.9018, 39.9222, 32.9956



31.9899, 39.9222, 35.6520



38.5753, 39.9222, 66.4095

Complementary

The Complementary color scheme is a pair of colors which are on the opposite of each other on the color wheel.



43.9018, 39.9222, 32.9956



44.3191, 52.1630, 68.7056

Split Complementary

Split-complementary colors differ from the complementary color scheme. The scheme consists of three colors, the original color and two neighbors of the complement color.



35.1072, 39.9222, 64.1111



43.9018, 39.9222, 32.9956



31.4467, 39.9222, 45.2891

Square

The Square scheme is like the rectangle color scheme, but the four colors are evenly spaced on the color wheel.



43.9018, 39.9222, 32.9956



34.0861, 39.9222, 29.1685



32.5527, 39.9222, 55.9516



42.0844, 39.9222, 61.8124

Rectangle

The Rectangle color scheme consists of four colors that form a rectangle on the color wheel.



43.9018, 39.9222, 32.9956



38.5301, 39.9222, 26.5240



32.5527, 39.9222, 55.9516



37.3656, 39.9222, 66.4244

Sweetspot

The Sweet Spot groups the original color and five complimentary colors.



43.9029, 39.9241, 32.9964



85.7202, 86.9042, 88.6374



47.5021, 38.7654, 59.9603



18.0456, 18.1757, 18.3205



0.0000, 0.0000, 0.0000



20.3446, 21.4041, 23.3091

Same Dimension

The Same Dimension uses a secret algorithm to generate beautiful new colors.



43.9029, 39.9241, 32.9964



63.7450, 55.6640, 42.1289



49.8176, 51.7536, 34.9680



11.9582, 12.1071, 12.3187



16.5981, 9.1292, 0.8873



0.9768, 0.6080, 0.0659

Inverse Universe

The Inverse Universe completely reimagines the original color for something new.



44.3191, 52.1630, 68.7056



64.4797, 77.5967, 106.1870



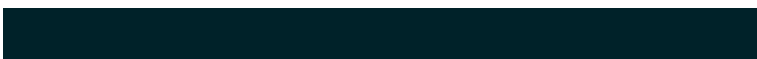
37.8631, 39.2512, 66.5536



11.9919, 13.0740, 15.1351



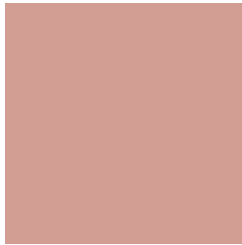
16.7056, 22.0578, 40.5696



0.9780, 1.3212, 2.2830

Previews

White Background



This preview shows how the XYZ color 43.9018, 39.9222, 32.9956 looks on a white background.

Color Contrast Check

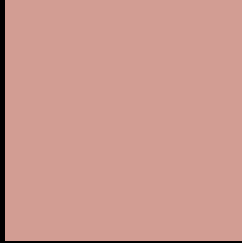
Large Text (above 18pt) WCAG AA × Fail

Any Text WCAG AA × Fail

Large Text (above 18pt) WCAG AAA × Fail

Any Text WCAG AAA × Fail

Black Background



This preview shows how the XYZ color 43.9018, 39.9222, 32.9956 looks on a black background.

Color Contrast Check

Large Text (above 18pt) WCAG AA ✓ Pass

Any Text WCAG AA ✓ Pass

Large Text (above 18pt) WCAG AAA ✓ Pass

Any Text WCAG AAA ✓ Pass

If you want to check with other color combinations, try the [Color Contrast Checker](#).

XYZ 43.9018, 39.9222, 32.9956

Background



This preview shows how black text looks on a background with the XYZ color 43.9018, 39.9222, 32.9956.



This preview shows how white text looks on a background with the XYZ color 43.9018, 39.9222,

32.9956.

Color Blindness Simulation

Color vision deficiency is a very complex topic, and I could not describe the different causes any better than Wikipedia does, so if you want to learn more, you should check out their [article about color blindness](#).

Dichromacy



Original Color

43.9018, 39.9222, 32.9956

Protanopia

38.0692, 40.0230, 35.8557

Deuteranopia

40.7912, 39.8718, 32.7402



Tritanopia

45.5899, 39.8614, 41.3676

Trichromacy



Original Color

43.9018, 39.9222, 32.9956

Protanomaly

40.0273, 39.9634, 34.8822

Deuteranomaly

41.7526, 39.8444, 32.6843

Tritanomaly

44.8433, 39.7948, 38.1185

Monochromacy



Original Color

43.9018, 39.9222, 32.9956

Achromatopsia

39.2122, 41.2543, 44.9259

Achromatomaly

40.6793, 40.7209, 40.3662

CSS Examples

Text

The CSS property to change the color of the text to XYZ 43.9018, 39.9222, 32.9956 is called "color". The color property can be set on classes, ids or directly on the HTML element.

This example shows how text in the color `rgb(210, 157, 147)` looks like.

```
.text, #text, p{  
    color:rgb(210, 157, 147)  
}
```

If you want to add a text shadow in that color use the text-shadow property, you can generate a text shadow directly with our [CSS Text Shadow Generator](#).

Here you see how black text with a 4 pixel rgb(210, 157, 147) colored shadow looks like.

```
.shadow{ text-shadow: 4px 4px 2px rgb(210, 157, 147) }
```

Border

The CSS property to change the border of an element to XYZ 43.9018, 39.9222, 32.9956 is called "border". The border property can be set on classes, ids or directly on the HTML element.

This example shows the color as border, it can be applied via the CSS property "border" or "border-color".

```
.border, #border, table{ border:4px solid rgb(210, 157, 147) }
```


If only the border color should be changed use the property `border-color`.

```
.border{ border-color:rgb(210, 157, 147) }
```

If you want to add a box shadow in that color use:

Here you see how a box with a 4 pixel `rgb(210, 157, 147)` colored shadow looks like.

```
.boxshadow{ -moz-box-shadow:4px 4px 4px  
4px rgb(210, 157, 147); -webkit-box-  
shadow:4px 4px 4px 4px rgb(210, 157, 147);  
box-shadow:4px 4px 4px 4px rgb(210, 157,  
147) }
```

Background

The CSS property to change the background color of an element to XYZ 43.9018, 39.9222, 32.9956 is called "background". The background property can be set on classes, ids or directly on the HTML element.

```
.background, #background, body{  
background: rgb(210, 157, 147) }
```

If only the background color should be changed can be used:

```
.background{ background-color: rgb(210,  
157, 147) }
```

This example shows the color as background, it is applied via the CSS property "background".

To optimize and compress your CSS code, you can use our [online CSS compressor and optimizer](#) based on csstidy. If you want to create a linear or radial gradient as background or border, check our [CSS Gradient Generator](#).

Hey! You found this booklet interesting? Support Converting Colors with the new Membership Option!

The pro membership hides all ads, plus gives you double the colors in the color bucket, and more awesome pro features!

[Learn more, Memberships starting at \\$2.50/m!](#)

**Follow me
on Twitter!**

@ConvertingColor